

SHEETS 1 AND 2
MAPS BOOK 56 PAGES 18 AND 19

INDEX 28

MAP
SHOWING CERTAIN REAL PROPERTIES TO BE CONDEMNED FOR PUBLIC STREET PURPOSES,
ALSO
SHOWING CERTAIN EASEMENTS AND RIGHTS OF WAY TO BE CONDEMNED FOR THE EXTENSION OF CERTAIN CUTS AND/OR FILLS,
ALSO
SHOWING CERTAIN EASEMENTS AND RIGHTS OF WAY TO BE CONDEMNED FOR THE CONSTRUCTION OF STORM DRAINS,
ALSO
SHOWING CERTAIN REAL PROPERTIES TO AND FROM WHICH CERTAIN RIGHTS OF INGRESS AND EGRESS, AND CERTAIN OTHER RIGHTS AND EASEMENTS APPURTENANT THERETO, ARE TO BE CONDEMNED,
ALL FOR PUBLIC STREET PURPOSES,
IN CONNECTION WITH THE PROPOSED OPENING WIDENING AND/OR LAYING OUT OF
O STREET,
THE PROPOSED WIDENING AND/OR LAYING OUT OF
TWO HUNDRED FIFTY-SEVENTH STREET,
AND FOR THE PROPOSED WIDENING AND/OR LAYING OUT OF
TWO HUNDRED FIFTY-EIGHTH STREET,
BETWEEN
WILMINGTON BOULEVARD,
AND
THE WESTERLY BOUNDARY OF THE CITY OF LOS ANGELES,
APPROXIMATELY THREE HUNDRED THIRTY 330 FEET WESTERLY OF
WESTERN AVENUE,
IN THE CITY OF LOS ANGELES, CALIF.
IN ACCORDANCE WITH THE ACT OF MARCH 10, 1933, CH. 100, PAGES 1-3.
L.L.O.D. 1933-34.

NOTES:
Land to be condemned shown colored red.
Easements and rights of way to be condemned for the extension of cuts and/or fills, shown thus: [diagonal lines]
Easements and rights of way to be condemned, both for the extension of cuts and/or fills, and for the construction of storm drains, shown thus: [cross-hatch]
Easements and rights of way to be condemned for the construction of storm drains, shown thus: [dashed line] easement for storm drain.
Properties to and from which certain rights of ingress and egress, and certain other appurtenant rights and easements, are to be condemned, shown outlined in yellow.
Dotted lines and figures show property holdings in those cases where they differ from recorded subdivisions.
Figures and letters in circles indicate the parcels as set forth in paragraph XVI of the complaint.

Superior Court Case No. 375750
Suit for Condemnation
Filed July 9, 1934
City of Los Angeles, Plaintiff
Vs
Noah A. Lookadoo, et al, Def.
Note: - Complaint excludes parcels 1A, 1D, 6A, 6D, 7A, 7D, 42A, 42D, 45A, 45D and 50A, which parcels are not colored on this map.
Order authorizing Plaintiff to take immediate possession, rendered July 20, 1934.
Interlocutory judgment as to parcels 13A, 13B1, 13B2, 13B3, 13C1, 13C2, 13C3, 13C4, 13C5, 13C6, 13C7, 13C8, 13C9, 13C10, 13D1, 13D2, 14A, 14A1, 14B1, 14B2, 14C and 14D, rendered Aug. 30, 1933, Judg. Bk. 906-390.
I.J. as to parcels 27A, 27D1, 27D2, 28A and 28D, rendered May 11, 1936, J.B. 938-257.
I.J. as to parcels 48A, 48D, 51A, 51A and 52D, rendered May 18, 1936, J.B. 931-320.
Int. Judg. as to parcels 24A and 24D, rendered May 7, 1937, J.B. 967-172.
Int. Judg. as to parcels 29A, 29D1, 29D2, 57A and 57D, rendered June 21, 1937, J.B. 977-102.

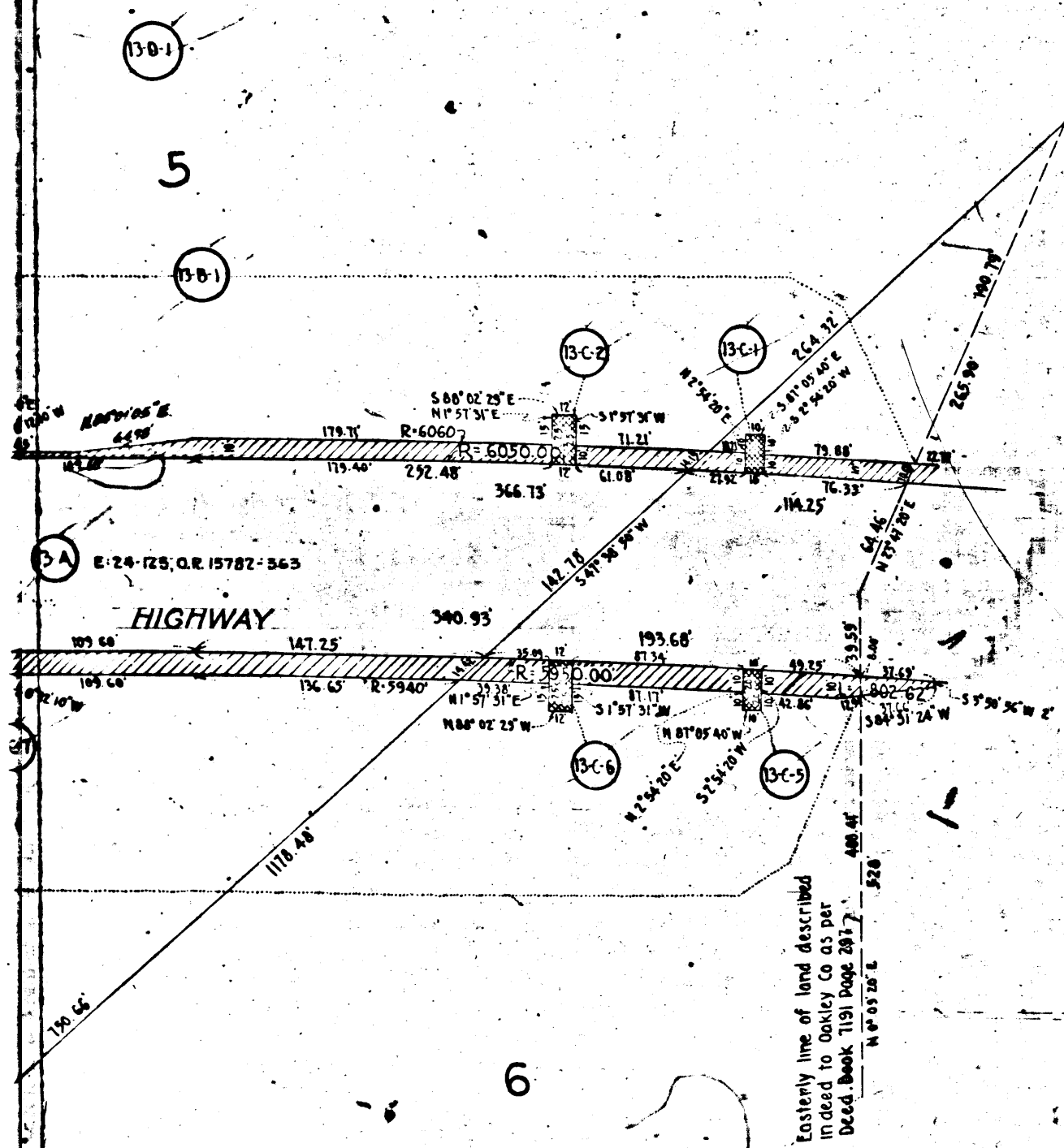
Int. Judg. as to parcels 26A and 26D, rendered July 19, 1937, J.B. 978-141.
Int. Judg. as to parcels 25A and 25D, rendered Jan. 21, 1938, J.B. 990-220.
Int. Judg. as to parcels 2A, 2D, 10A, 12A, 12B1, 12B2, 12C1, 12C3, 12D1, 12D2, 15A, 15B, 15C, 15D, 16A, 16B, 16C, 16D, 17A, 17D, 18A, 18B2, 18C, 18D, 19A, 19B, 19D, 20A, 20B, 20C, 20D, 21A, 21B, 21D, 22A, 22D, 30A, 32A, 32D, 33A, 33B, 33D, 34A, 34B, 34D, 35A, 35B, 35D, 36A, 36C, 36D, 46A, 46D, 53A, 53D, 54B, 54D, 55B, 55D and 58D to 62D incl., rendered May 14, 1938, J.B. 990-369.
Int. Judg. as to parcels 14A, 14A1, 14B1, 14C, 14D, 2A, 27D1, 27D2, 28A, 28D, 29A, 29D1, 29D2, 57A, 57D, 58A, 58D, 59A, 59D, 60A, 60D, 61A, 61D, 62A, 62D, 63A, 63D, 64A, 64D, 65A, 65D, 66A, 66D, 67A, 67D, 68A, 68D, 69A, 69D, 70A, 70D, 71A, 71D, 72A, 72D, 73A, 73D, 74A, 74D, 75A, 75D, 76A, 76D, 77A, 77D, 78A, 78D, 79A, 79D, 80A, 80D, 81A, 81D, 82A, 82D, 83A, 83D, 84A, 84D, 85A, 85D, 86A, 86D, 87A, 87D, 88A, 88D, 89A, 89D, 90A, 90D, 91A, 91D, 92A, 92D, 93A, 93D, 94A, 94D, 95A, 95D, 96A, 96D, 97A, 97D, 98A, 98D, 99A, 99D, 100A, 100D, 101A, 101D, 102A, 102D, 103A, 103D, 104A, 104D, 105A, 105D, 106A, 106D, 107A, 107D, 108A, 108D, 109A, 109D, 110A, 110D, 111A, 111D, 112A, 112D, 113A, 113D, 114A, 114D, 115A, 115D, 116A, 116D, 117A, 117D, 118A, 118D, 119A, 119D, 120A, 120D, 121A, 121D, 122A, 122D, 123A, 123D, 124A, 124D, 125A, 125D, 126A, 126D, 127A, 127D, 128A, 128D, 129A, 129D, 130A, 130D, 131A, 131D, 132A, 132D, 133A, 133D, 134A, 134D, 135A, 135D, 136A, 136D, 137A, 137D, 138A, 138D, 139A, 139D, 140A, 140D, 141A, 141D, 142A, 142D, 143A, 143D, 144A, 144D, 145A, 145D, 146A, 146D, 147A, 147D, 148A, 148D, 149A, 149D, 150A, 150D, 151A, 151D, 152A, 152D, 153A, 153D, 154A, 154D, 155A, 155D, 156A, 156D, 157A, 157D, 158A, 158D, 159A, 159D, 160A, 160D, 161A, 161D, 162A, 162D, 163A, 163D, 164A, 164D, 165A, 165D, 166A, 166D, 167A, 167D, 168A, 168D, 169A, 169D, 170A, 170D, 171A, 171D, 172A, 172D, 173A, 173D, 174A, 174D, 175A, 175D, 176A, 176D, 177A, 177D, 178A, 178D, 179A, 179D, 180A, 180D, 181A, 181D, 182A, 182D, 183A, 183D, 184A, 184D, 185A, 185D, 186A, 186D, 187A, 187D, 188A, 188D, 189A, 189D, 190A, 190D, 191A, 191D, 192A, 192D, 193A, 193D, 194A, 194D, 195A, 195D, 196A, 196D, 197A, 197D, 198A, 198D, 199A, 199D, 200A, 200D, 201A, 201D, 202A, 202D, 203A, 203D, 204A, 204D, 205A, 205D, 206A, 206D, 207A, 207D, 208A, 208D, 209A, 209D, 210A, 210D, 211A, 211D, 212A, 212D, 213A, 213D, 214A, 214D, 215A, 215D, 216A, 216D, 217A, 217D, 218A, 218D, 219A, 219D, 220A, 220D, 221A, 221D, 222A, 222D, 223A, 223D, 224A, 224D, 225A, 225D, 226A, 226D, 227A, 227D, 228A, 228D, 229A, 229D, 230A, 230D, 231A, 231D, 232A, 232D, 233A, 233D, 234A, 234D, 235A, 235D, 236A, 236D, 237A, 237D, 238A, 238D, 239A, 239D, 240A, 240D, 241A, 241D, 242A, 242D, 243A, 243D, 244A, 244D, 245A, 245D, 246A, 246D, 247A, 247D, 248A, 248D, 249A, 249D, 250A, 250D, 251A, 251D, 252A, 252D, 253A, 253D, 254A, 254D, 255A, 255D, 256A, 256D, 257A, 257D, 258A, 258D, 259A, 259D, 260A, 260D, 261A, 261D, 262A, 262D, 263A, 263D, 264A, 264D, 265A, 265D, 266A, 266D, 267A, 267D, 268A, 268D, 269A, 269D, 270A, 270D, 271A, 271D, 272A, 272D, 273A, 273D, 274A, 274D, 275A, 275D, 276A, 276D, 277A, 277D, 278A, 278D, 279A, 279D, 280A, 280D, 281A, 281D, 282A, 282D, 283A, 283D, 284A, 284D, 285A, 285D, 286A, 286D, 287A, 287D, 288A, 288D, 289A, 289D, 290A, 290D, 291A, 291D, 292A, 292D, 293A, 293D, 294A, 294D, 295A, 295D, 296A, 296D, 297A, 297D, 298A, 298D, 299A, 299D, 300A, 300D, 301A, 301D, 302A, 302D, 303A, 303D, 304A, 304D, 305A, 305D, 306A, 306D, 307A, 307D, 308A, 308D, 309A, 309D, 310A, 310D, 311A, 311D, 312A, 312D, 313A, 313D, 314A, 314D, 315A, 315D, 316A, 316D, 317A, 317D, 318A, 318D, 319A, 319D, 320A, 320D, 321A, 321D, 322A, 322D, 323A, 323D, 324A, 324D, 325A, 325D, 326A, 326D, 327A, 327D, 328A, 328D, 329A, 329D, 330A, 330D, 331A, 331D, 332A, 332D, 333A, 333D, 334A, 334D, 335A, 335D, 336A, 336D, 337A, 337D, 338A, 338D, 339A, 339D, 340A, 340D, 341A, 341D, 342A, 342D, 343A, 343D, 344A, 344D, 345A, 345D, 346A, 346D, 347A, 347D, 348A, 348D, 349A, 349D, 350A, 350D, 351A, 351D, 352A, 352D, 353A, 353D, 354A, 354D, 355A, 355D, 356A, 356D, 357A, 357D, 358A, 358D, 359A, 359D, 360A, 360D, 361A, 361D, 362A, 362D, 363A, 363D, 364A, 364D, 365A, 365D, 366A, 366D, 367A, 367D, 368A, 368D, 369A, 369D, 370A, 370D, 371A, 371D, 372A, 372D, 373A, 373D, 374A, 374D, 375A, 375D, 376A, 376D, 377A, 377D, 378A, 378D, 379A, 379D, 380A, 380D, 381A, 381D, 382A, 382D, 383A, 383D, 384A, 384D, 385A, 385D, 386A, 386D, 387A, 387D, 388A, 388D, 389A, 389D, 390A, 390D, 391A, 391D, 392A, 392D, 393A, 393D, 394A, 394D, 395A, 395D, 396A, 396D, 397A, 397D, 398A, 398D, 399A, 399D, 400A, 400D, 401A, 401D, 402A, 402D, 403A, 403D, 404A, 404D, 405A, 405D, 406A, 406D, 407A, 407D, 408A, 408D, 409A, 409D, 410A, 410D, 411A, 411D, 412A, 412D, 413A, 413D, 414A, 414D, 415A, 415D, 416A, 416D, 417A, 417D, 418A, 418D, 419A, 419D, 420A, 420D, 421A, 421D, 422A, 422D, 423A, 423D, 424A, 424D, 425A, 425D, 426A, 426D, 427A, 427D, 428A, 428D, 429A, 429D, 430A, 430D, 431A, 431D, 432A, 432D, 433A, 433D, 434A, 434D, 435A, 435D, 436A, 436D, 437A, 437D, 438A, 438D, 439A, 439D, 440A, 440D, 441A, 441D, 442A, 442D, 443A, 443D, 444A, 444D, 445A, 445D, 446A, 446D, 447A, 447D, 448A, 448D, 449A, 449D, 450A, 450D, 451A, 451D, 452A, 452D, 453A, 453D, 454A, 454D, 455A, 455D, 456A, 456D, 457A, 457D, 458A, 458D, 459A, 459D, 460A, 460D, 461A, 461D, 462A, 462D, 463A, 463D, 464A, 464D, 465A, 465D, 466A, 466D, 467A, 467D, 468A, 468D, 469A, 469D, 470A, 470D, 471A, 471D, 472A, 472D, 473A, 473D, 474A, 474D, 475A, 475D, 476A, 476D, 477A, 477D, 478A, 478D, 479A, 479D, 480A, 480D, 481A, 481D, 482A, 482D, 483A, 483D, 484A, 484D, 485A, 485D, 486A, 486D, 487A, 487D, 488A, 488D, 489A, 489D, 490A, 490D, 491A, 491D, 492A, 492D, 493A, 493D, 494A, 494D, 495A, 495D, 496A, 496D, 497A, 497D, 498A, 498D, 499A, 499D, 500A, 500D, 501A, 501D, 502A, 502D, 503A, 503D, 504A, 504D, 505A, 505D, 506A, 506D, 507A, 507D, 508A, 508D, 509A, 509D, 510A, 510D, 511A, 511D, 512A, 512D, 513A, 513D, 514A, 514D, 515A, 515D, 516A, 516D, 517A, 517D, 518A, 518D, 519A, 519D, 520A, 520D, 521A, 521D, 522A, 522D, 523A, 523D, 524A, 524D, 525A, 525D, 526A, 526D, 527A, 527D, 528A, 528D, 529A, 529D, 530A, 530D, 531A, 531D, 532A, 532D, 533A, 533D, 534A, 534D, 535A, 535D, 536A, 536D, 537A, 537D, 538A, 538D, 539A, 539D, 540A, 540D, 541A, 541D, 542A, 542D, 543A, 543D, 544A, 544D, 545A, 545D, 546A, 546D, 547A, 547D, 548A, 548D, 549A, 549D, 550A, 550D, 551A, 551D, 552A, 552D, 553A, 553D, 554A, 554D, 555A, 555D, 556A, 556D, 557A, 557D, 558A, 558D, 559A, 559D, 560A, 560D, 561A, 561D, 562A, 562D, 563A, 563D, 564A, 564D, 565A, 565D, 566A, 566D, 567A, 567D, 568A, 568D, 569A, 569D, 570A, 570D, 571A, 571D, 572A, 572D, 573A, 573D, 574A, 574D, 575A, 575D, 576A, 576D, 577A, 577D, 578A, 578D, 579A, 579D, 580A, 580D, 581A, 581D, 582A, 582D, 583A, 583D, 584A, 584D, 585A, 585D, 586A, 586D, 587A, 587D, 588A, 588D, 589A, 589D, 590A, 590D, 591A, 591D, 592A, 592D, 593A, 593D, 594A, 594D, 595A, 595D, 596A, 596D, 597A, 597D, 598A, 598D, 599A, 599D, 600A, 600D, 601A, 601D, 602A, 602D, 603A, 603D, 604A, 604D, 605A, 605D, 606A, 606D, 607A, 607D, 608A, 608D, 609A, 609D, 610A, 610D, 611A, 611D, 612A, 612D, 613A, 613D, 614A, 614D, 615A, 615D, 616A, 616D, 617A, 617D, 618A, 618D, 619A, 619D, 620A, 620D, 621A, 621D, 622A, 622D, 623A, 623D, 624A, 624D, 625A, 625D, 626A, 626D, 627A, 627D, 628A, 628D, 629A, 629D, 630A, 630D, 631A, 631D, 632A, 632D, 633A, 633D, 634A, 634D, 635A, 635D, 636A, 636D, 637A, 637D, 638A, 638D, 639A, 639D, 640A, 640D, 641A, 641D, 642A, 642D, 643A, 643D, 644A, 644D, 645A, 645D, 646A, 646D, 647A, 647D, 648A, 648D, 649A, 649D, 650A, 650D, 651A, 651D, 652A, 652D, 653A, 653D, 654A, 654D, 655A, 655D, 656A, 656D, 657A, 657D, 658A, 658D, 659A, 659D, 660A, 660D, 661A, 661D, 662A, 662D, 663A, 663D, 664A, 664D, 665A, 665D, 666A, 666D, 667A, 667D, 668A, 668D, 669A, 669D, 670A, 670D, 671A, 671D, 672A, 672D, 673A, 673D, 674A, 674D, 675A, 675D, 676A, 676D, 677A, 677D, 678A, 678D, 679A, 679D, 680A, 680D, 681A, 681D, 682A, 682D, 683A, 683D, 684A, 684D, 685A, 685D, 686A, 686D, 687A, 687D, 688A, 688D, 689A, 689D, 690A, 690D, 691A, 691D, 692A, 692D, 693A, 693D, 694A, 694D, 695A, 695D, 696A, 696D, 697A, 697D, 698A, 698D, 699A, 699D, 700A, 700D, 701A, 701D, 702A, 702D, 703A, 703D, 704A, 704D, 705A, 705D, 706A, 706D, 707A, 707D, 708A, 708D, 709A, 709D, 710A, 710D, 711A, 711D, 712A, 712D, 713A, 713D, 714A, 714D, 715A, 715D, 716A, 716D, 717A, 717D, 718A, 718D, 719A, 719D, 720A, 720D, 721A, 721D, 722A, 722D, 723A, 723D, 724A, 724D, 725A, 725D, 726A, 726D, 727A, 727D, 728A, 728D, 729A, 729D, 730A, 730D, 731A, 731D, 732A, 732D, 733A, 733D, 734A, 734D, 735A, 735D, 736A, 736D, 737A, 737D, 738A, 738D, 739A, 739D, 740A, 740D, 741A, 741D, 742A, 742D, 743A, 743D, 744A, 744D, 745A, 745D, 746A, 746D, 747A, 747D, 748A, 748D, 749A, 749D, 750A, 750D, 751A, 751D, 752A, 752D, 753A, 753D, 754A, 754D, 755A, 755D, 756A, 756D, 757A, 757D, 758A, 758D, 759A, 759D, 760A, 760D, 761A, 761D, 762A, 762D, 763A, 763D, 764A, 764D, 765A, 765D, 766A, 766D, 767A, 767D, 768A, 768D, 769A, 769D, 770A, 770D, 771A, 771D, 772A, 772D, 773A, 773D, 774A, 774D, 775A, 775D, 776A, 776D, 777A, 777D, 778A, 778D, 779A, 779D, 780A, 780D, 781A, 781D, 782A, 782D, 783A, 783D, 784A, 784D, 785A, 785D, 786A, 786D, 787A, 787D, 788A, 788D, 789A, 789D, 790A, 790D, 791A, 791D, 792A, 792D, 793A, 793D, 794A, 794D, 795A, 795D, 796A, 796D, 797A, 797D, 798A, 798D, 799A, 799D, 800A, 800D, 801A, 801D, 802A, 802D, 803A, 803D, 804A, 804D, 805A, 805D, 806A, 806D, 807A, 807D, 808A, 808D, 809A, 809D, 810A, 810D, 811A, 811D, 812A, 812D, 813A, 813D, 814A, 814D, 815A, 815D, 816A, 816D, 817A, 817D, 818A, 818D, 819A, 819D, 820A, 820D, 821A, 821D, 822A, 822D, 823A, 823D, 824A, 824D, 825A, 825D, 826A, 826D, 827A, 827D, 828A, 828D, 829A, 829D, 830A, 830D, 831A, 831D, 832A, 832D, 833A, 833D, 834A, 834D, 835A, 835D, 836A, 836D, 837A, 837D, 838A, 838D, 839A, 839D, 840A, 840D, 841A, 841D, 842A, 842D, 843A, 843D, 844A, 844D, 845A, 845D, 846A, 846D, 847A, 847D, 848A, 848D, 849A, 849D, 850A, 850D, 851A, 851D, 852A, 852D, 853A, 853D, 854A, 854D, 855A, 855D, 856A, 856D, 857A, 857D, 858A, 858D, 859A, 859D, 860A, 860D, 861A, 861D, 862A, 862D, 863A, 863D, 864A, 864D, 865A, 865D, 866A, 866D, 867A, 867D, 868A, 868D, 869A, 869D, 870A, 870D, 871A, 871D, 872A, 872D, 873A, 873D, 874A, 874D, 875A, 875D, 876A, 876D, 877A, 877D, 878A, 878D, 879A, 879D, 880A, 880D, 881A, 881D, 882A, 882D, 883A, 883D, 884A, 884D, 885A, 885D, 886A, 886D, 887A, 887D, 888A, 888D, 889A, 889D, 890A, 890D, 891A, 891D, 892A, 892D, 893A, 893D, 894A, 894D, 895A, 895D, 896A, 896D, 897A, 897D, 898A, 898D, 899A, 899D, 900A, 900D, 901A, 901D, 902A, 902D, 903A, 903D, 904A, 904D, 905A, 905D, 906A, 906D, 907A, 907D, 908A, 908D, 909A, 909D, 910A, 910D, 911A, 911D, 912A, 912D, 913A, 913D, 914A, 914D, 915A, 915D, 916A, 916D, 917A, 917D, 918A, 918D, 919A, 919D, 920A, 920D, 921A, 921D, 922A, 922D, 923A, 923D, 924A, 924D, 925A, 925D, 926A, 926D

W-500

W-580

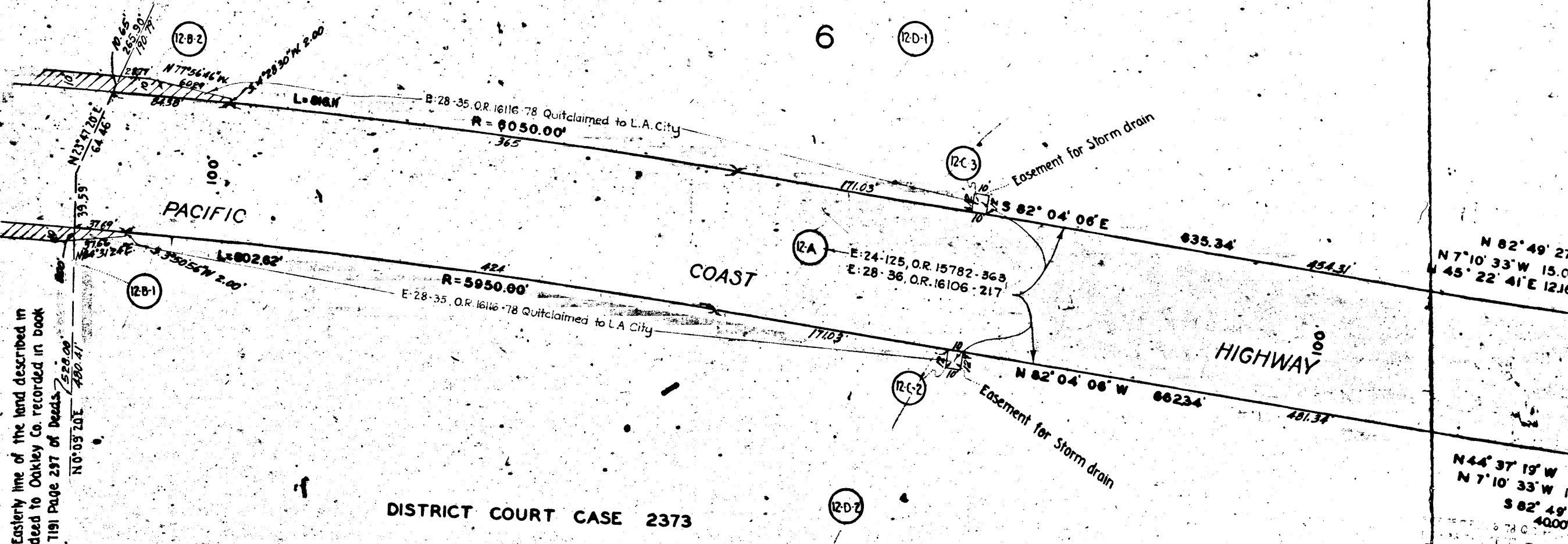
PECK'S SUBDIVISION OF LOT J AND PORTION OF LOT H OF THE PARTITION OF THE RANCHO LOS PALOS VERDES

For exterior boundaries of total parcel see Marginal Map on sheet No. 1



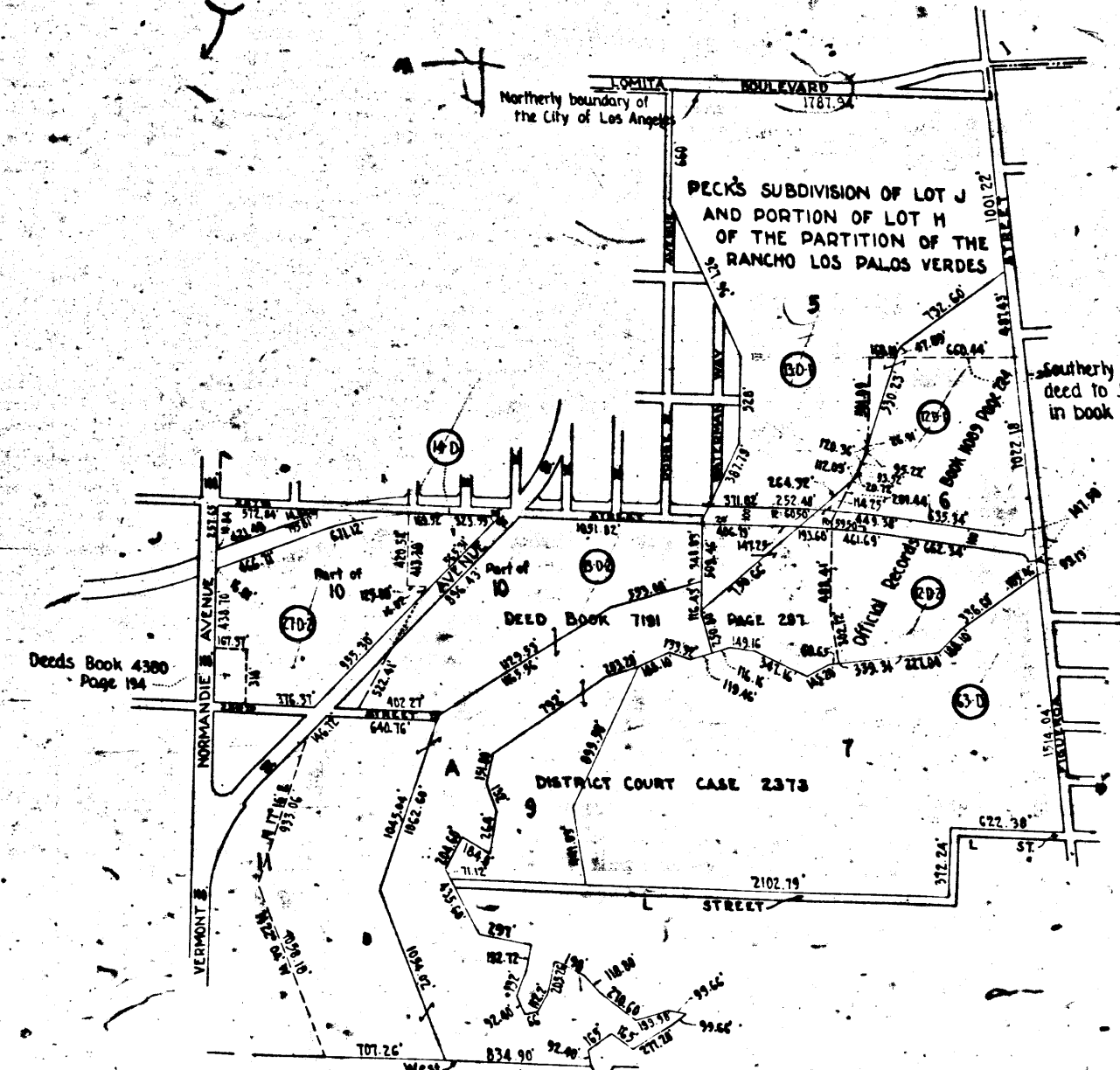
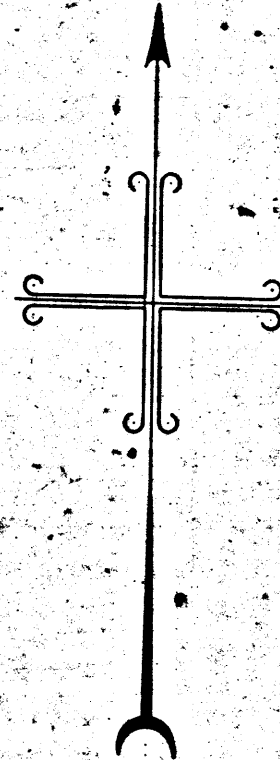
RECORD TO THE PUBLIC RECORDS OF THE CITY OF LOS ANGELES
 DISTRICT OF THE
 FOR CONTINUATION SEE SHEET 1

For continuation see sheet 2



DISTRICT COURT CASE 2373

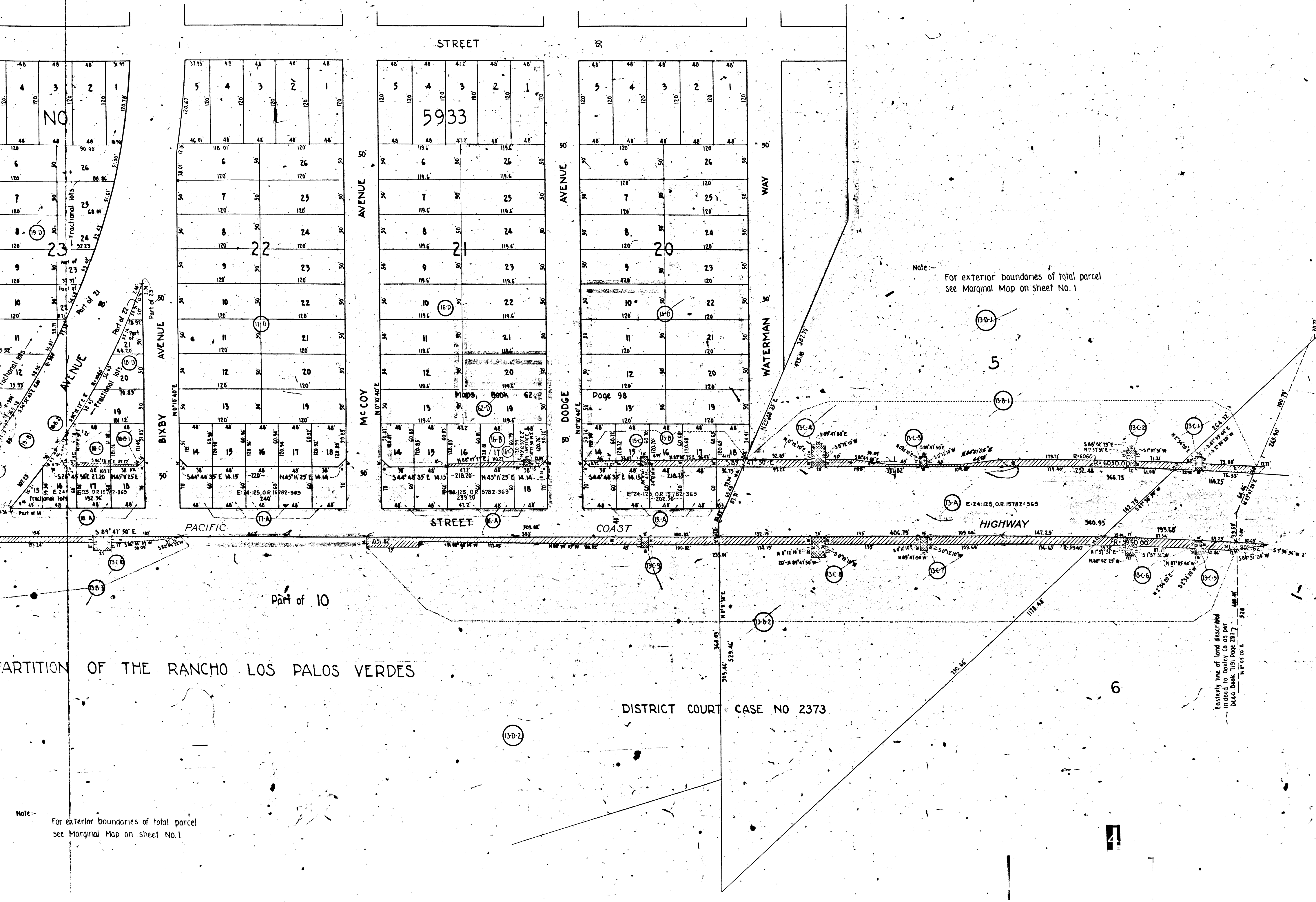
Note: For exterior boundaries of total Parcel see Marginal Map.



MARGINAL MAP
 NO SCALE

W-500

N-S



Note: For exterior boundaries of total parcel see Marginal Map on sheet No. 1

Part of 10

PARTITION OF THE RANCHO LOS PALOS VERDES

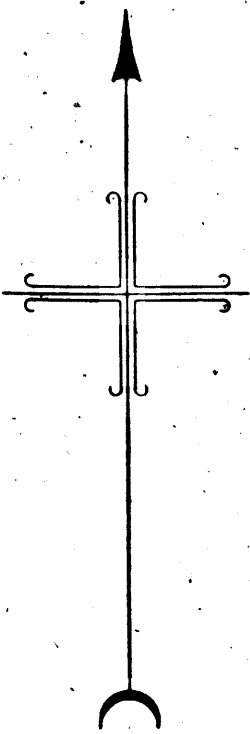
DISTRICT COURT CASE NO 2373

Note: For exterior boundaries of total parcel see Marginal Map on sheet No. 1

REGISTERED
OFFICE OF THE
SHERIFF OF THE
COUNTY OF LOS ANGELES
For continuation see sheet 1

Easterly line of land described
indeed to Oakley Co as per
Deed Book 1151 page 287
N 0° 02' 32" E
528'

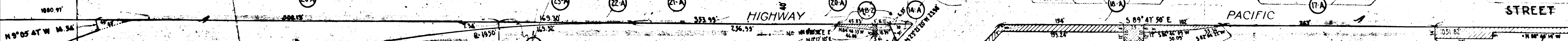
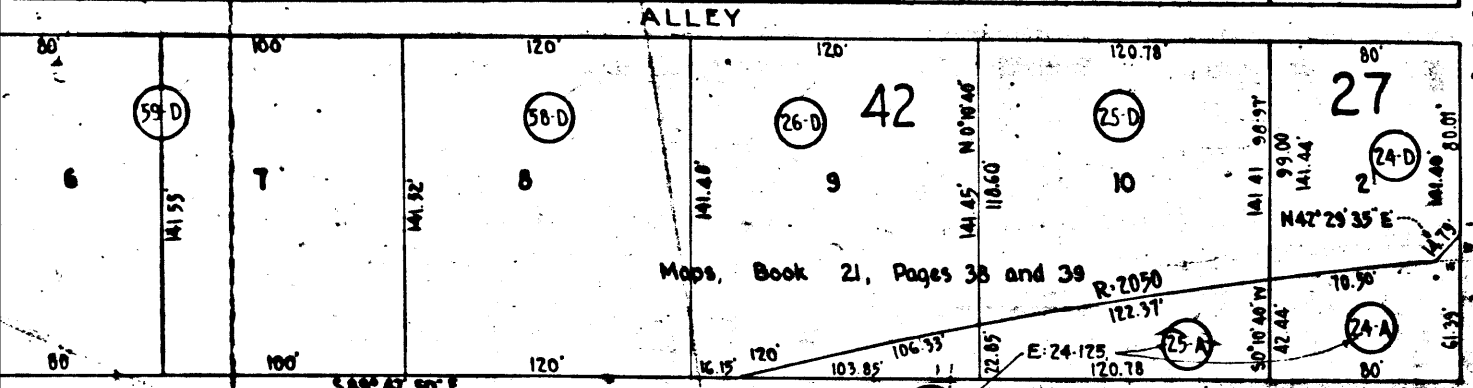
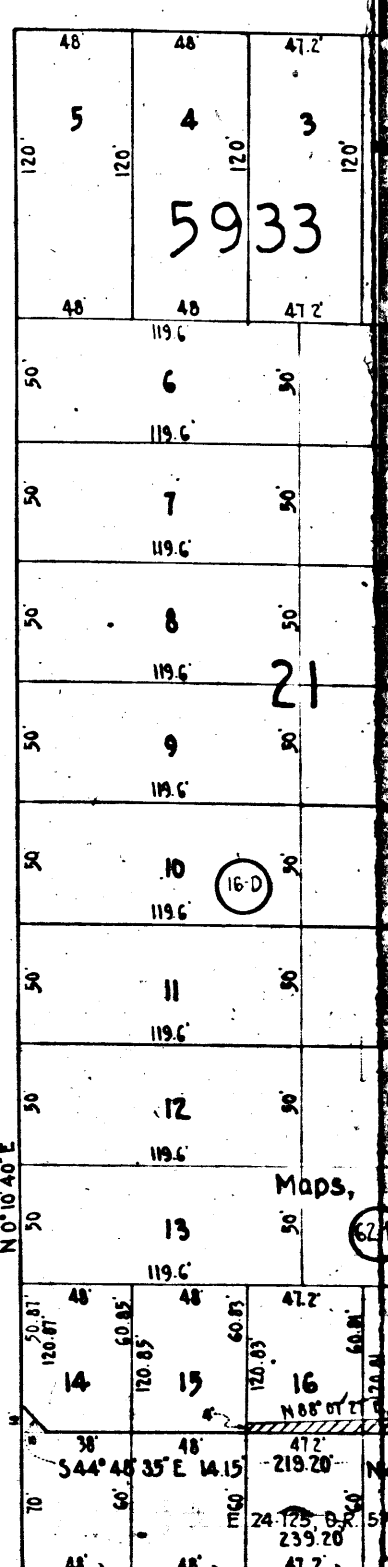
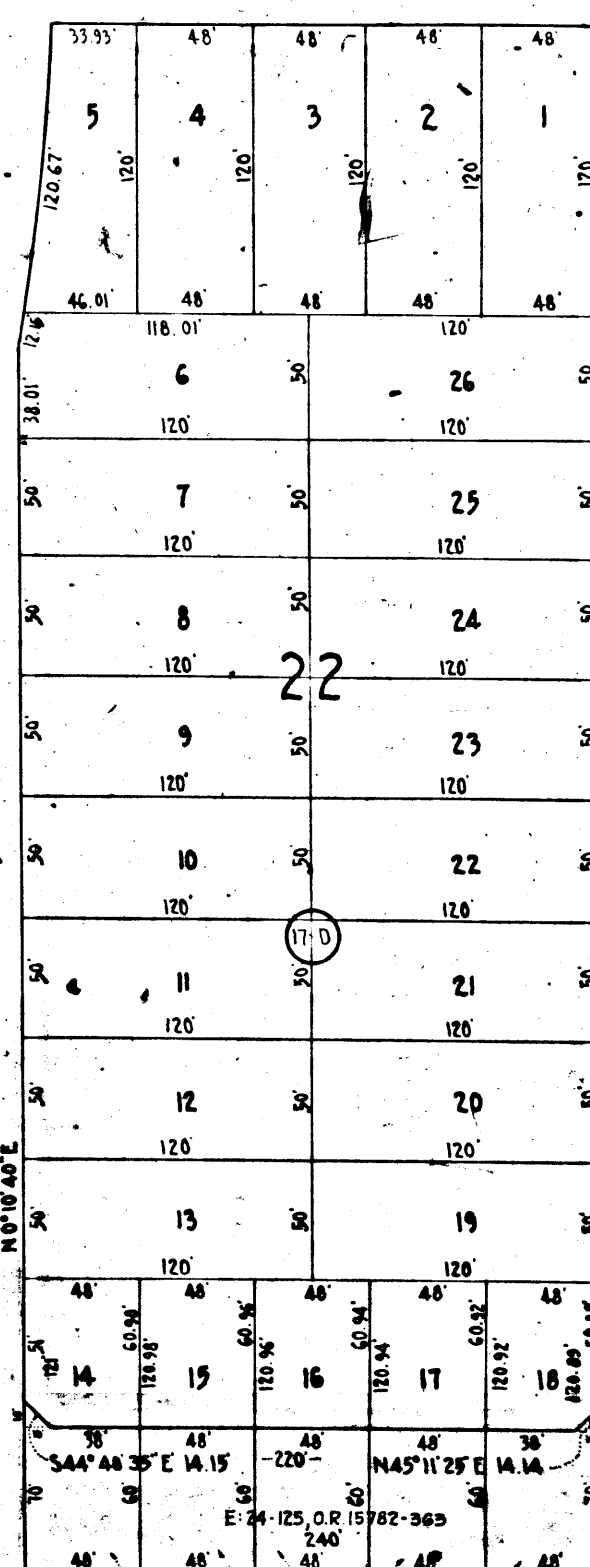
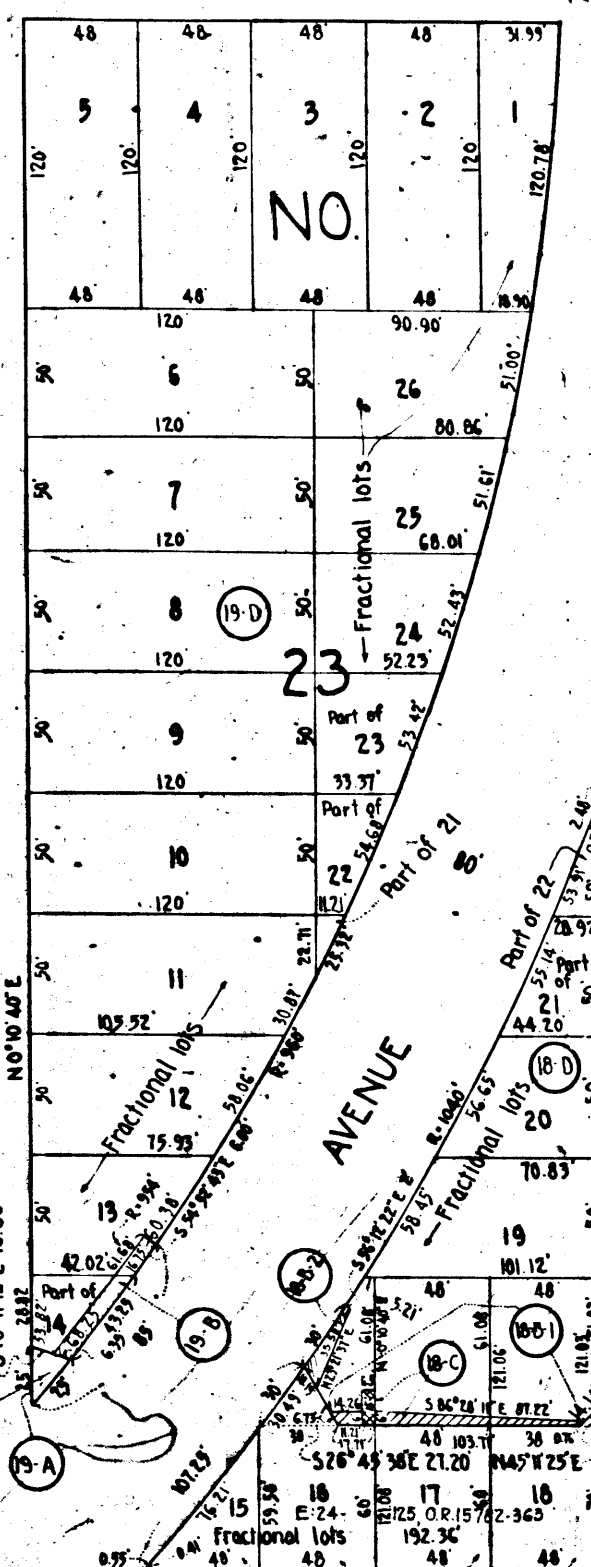
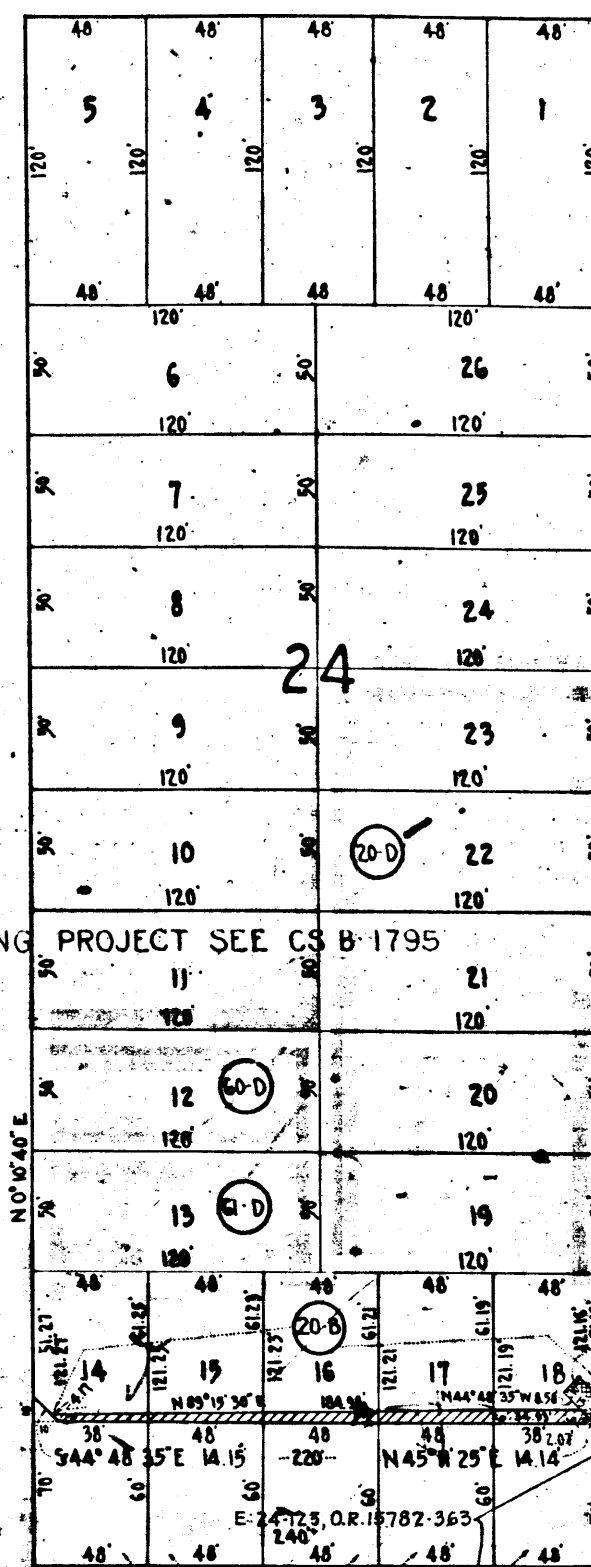
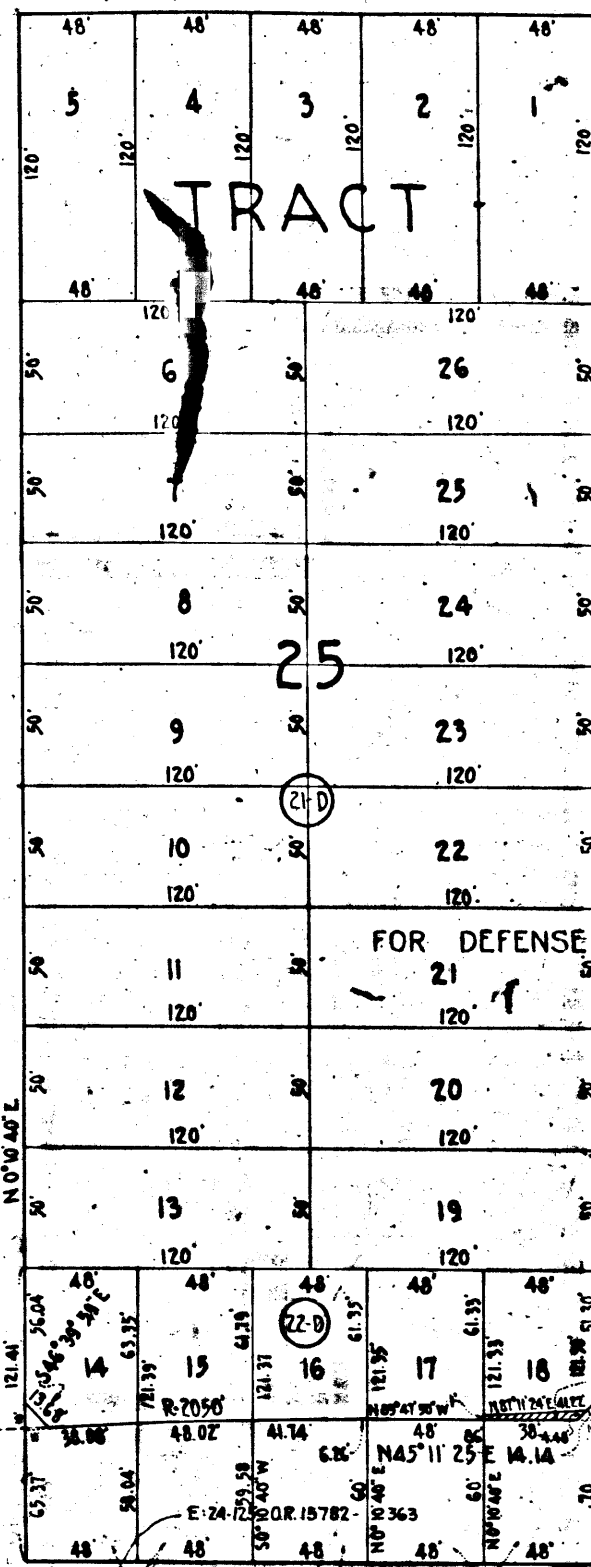
4



TRACT NO 1589
SHEET NO 1

TWO HUNDRED FIFTY-FIFTH

STREET



PECK'S SUBDIVISION OF LOT AND PORTION OF LOT H OF THE PARTITION OF THE RANCHO LOS PALOS VERDES

Part of 10

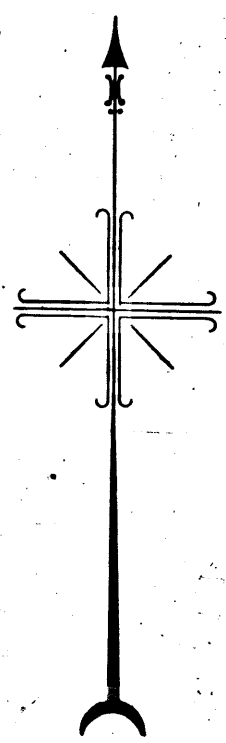
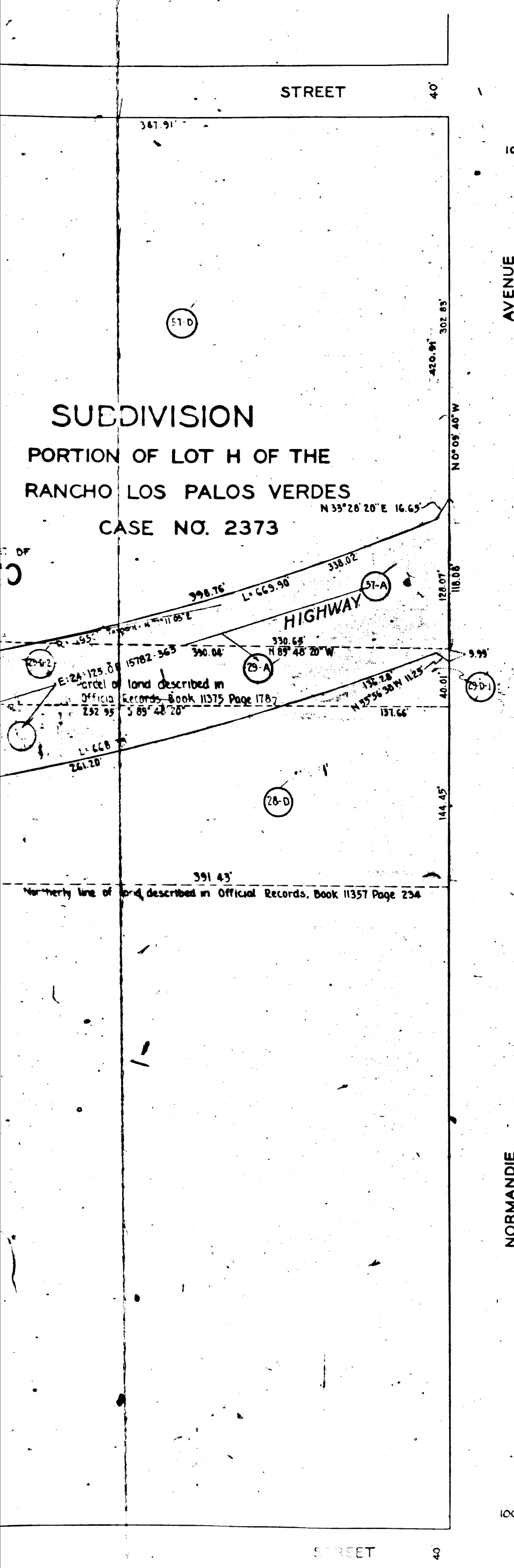
Part of 10

VERMONT

Note:- For exterior boundaries of total parcel see Marginal Map on sheet No. 1

Note:- For exterior boundaries of total parcel see Marginal Map on sheet No. 1

SUBDIVISION
 PORTION OF LOT H OF THE
 RANCHO LOS PALOS VERDES
 CASE NO. 2373

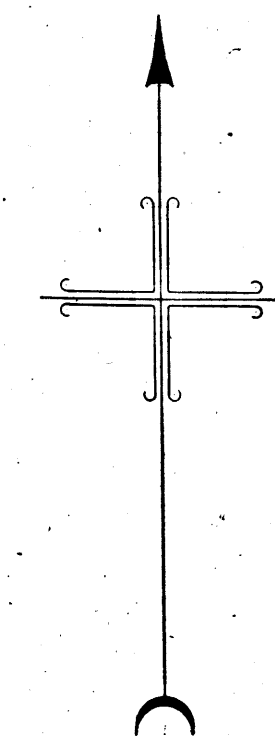


For continuation see sheet 2

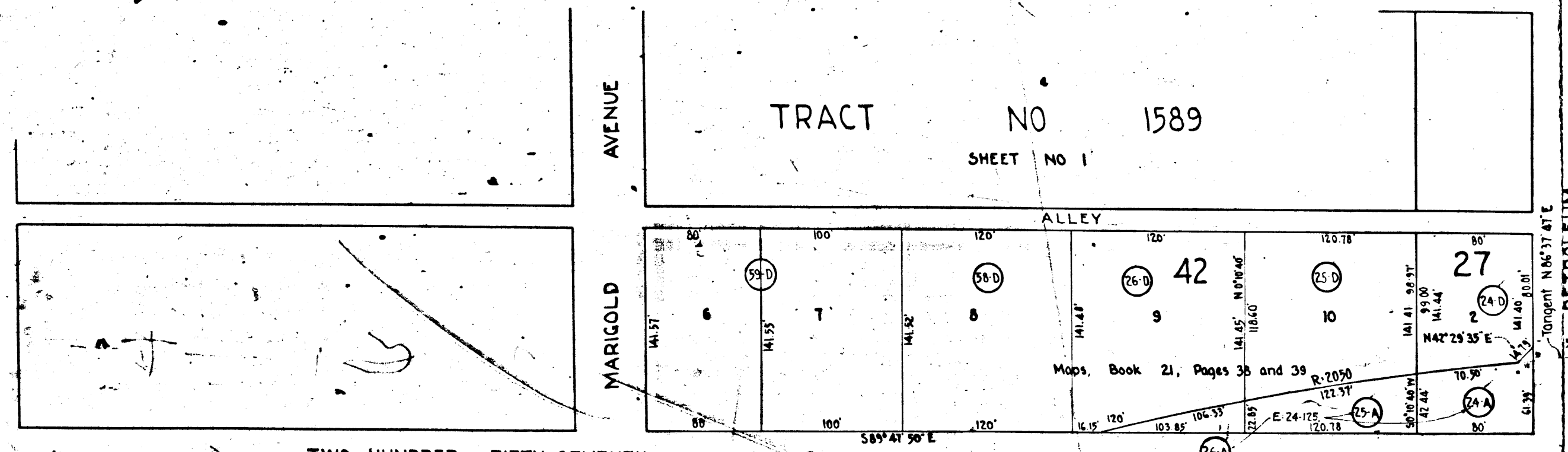
For continuation see sheet 3

CITY OF LOS ANGELES
 SUPERVISOR OF THE

W-5
 W-50



TRACT NO 1589
SHEET NO 1



AVENUE 8

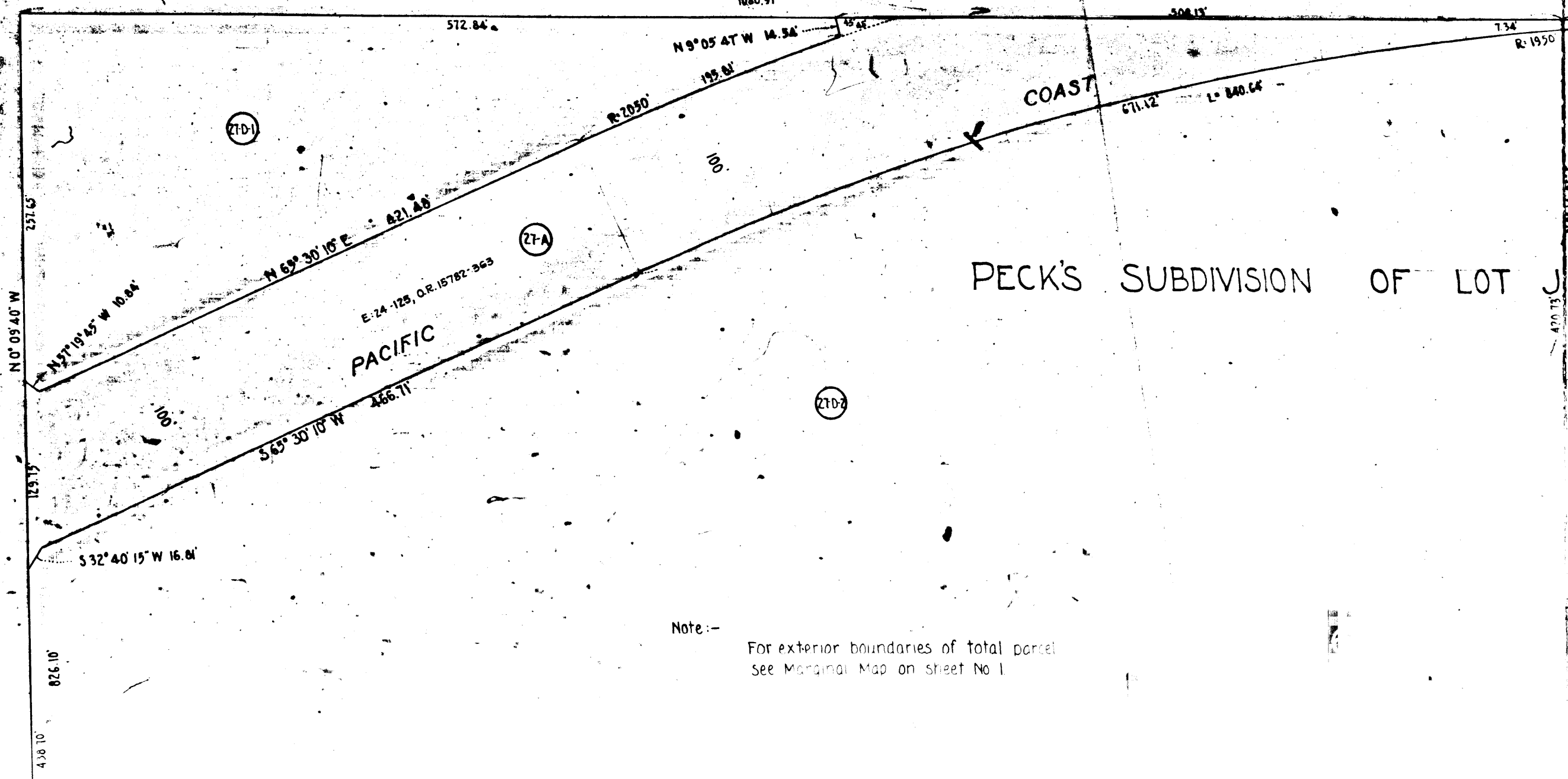
MARIGOLD AVENUE

PETROLEUM AVENUE

TWO HUNDRED FIFTY-SEVENTH

COAST

PECK'S SUBDIVISION OF LOT J



Note: -
 For exterior boundaries of total parcel
 see Marginal Map on sheet No 1

100'

AVENUE

NORMANDIE

100'

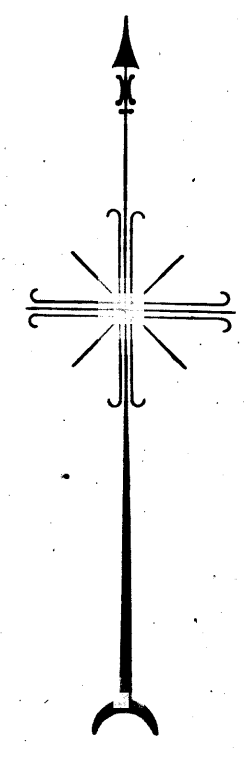
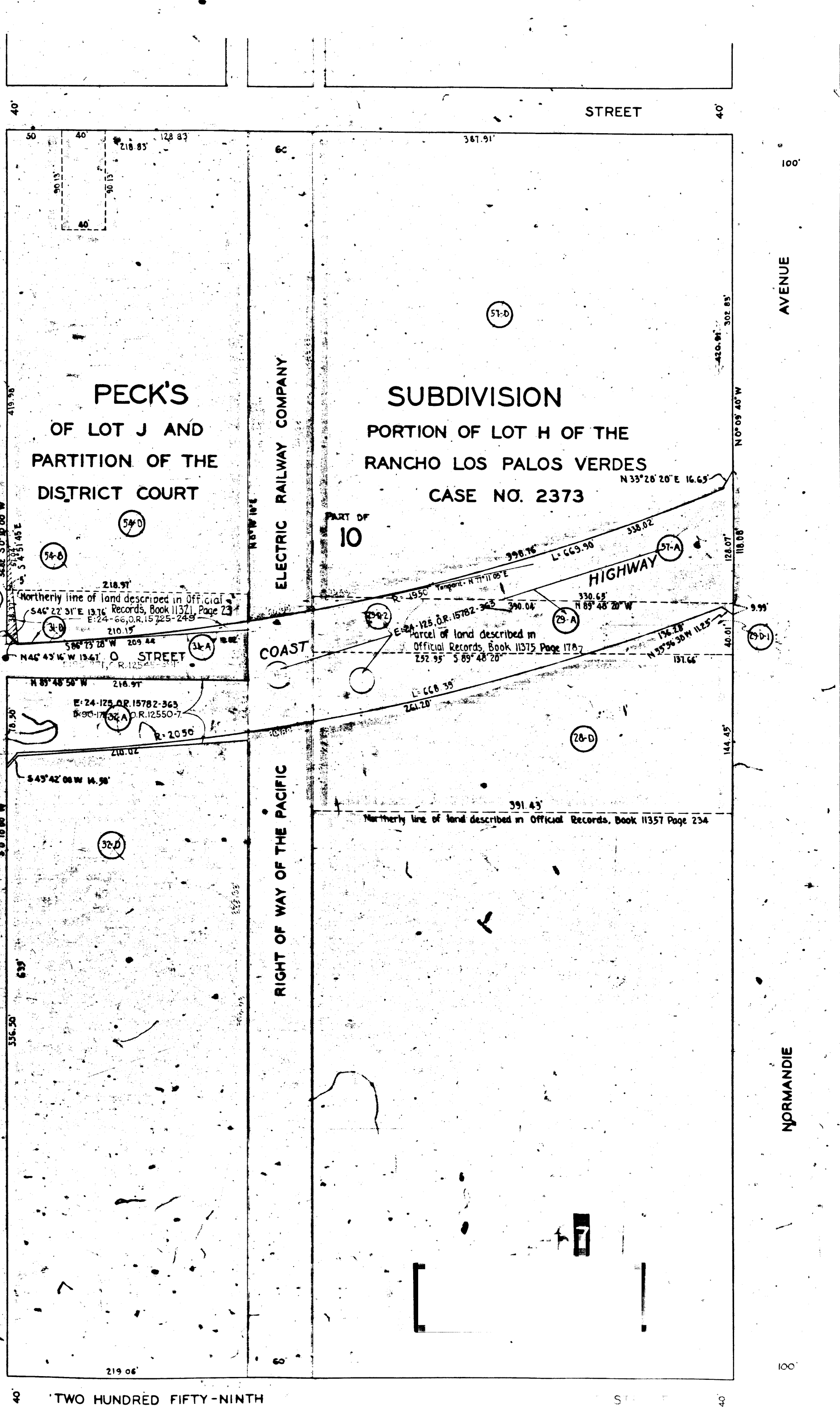
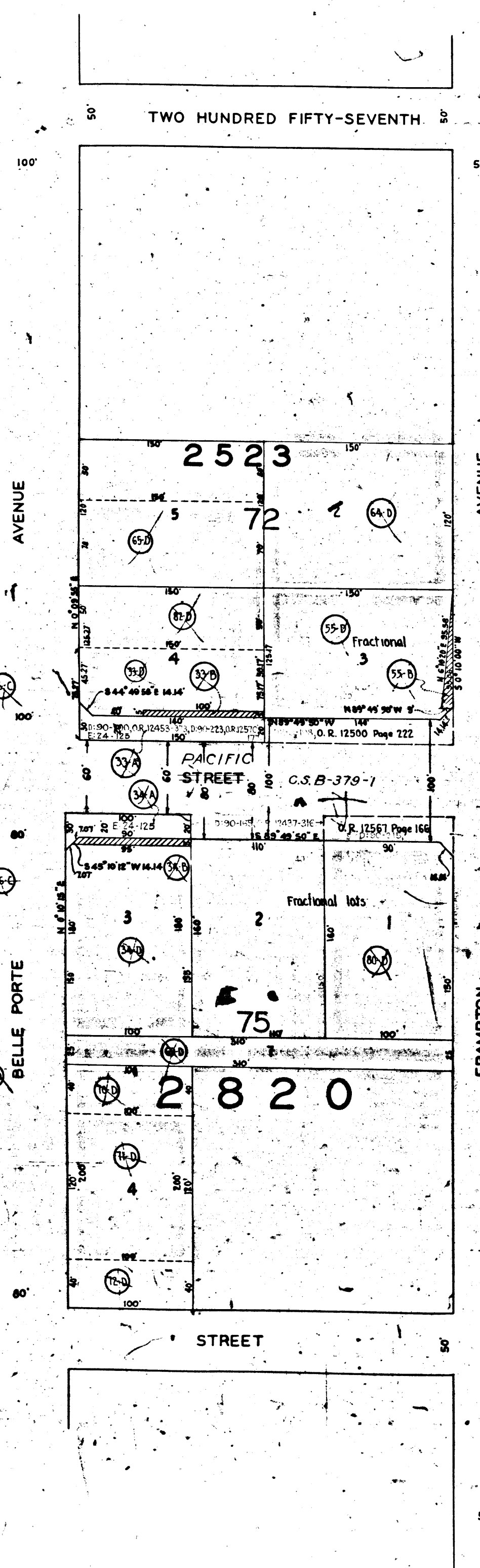
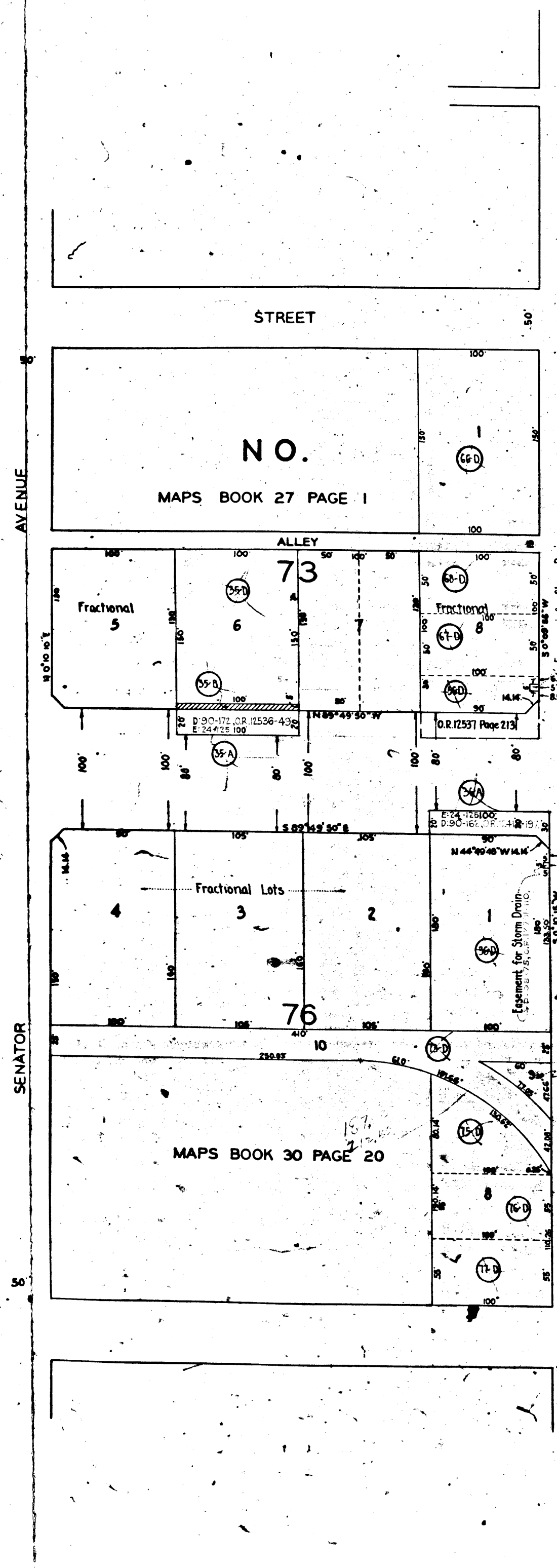
STREET

STREET

NORMANDIE

-M

151 200 291
 500K 1191 PAGE 291



For continuation See sheet 2

TWO HUNDRED FIFTY-SEVENTH

NO. 1589
SHEET 2
MAPS BOOK 21 PAGE 74

TWO HUNDRED FIFTY-EIGHTH

A. C. T.

TWO HUNDRED FIFTY-NINTH

ALLEY

52

12

13

14

15

16

PACIFIC COAST
C.S.B-379-1

Fractional lots

78

SHEET 1

AVENUE

PRESIDENT

TRACT

ALLEY

74

5

6

7

HIGHWAY

Fractional lots

77

N.O.

AVENUE

SENATOR

STREET

NO. 73
MAPS BOOK 27 PAGE 1

ALLEY

73

Fractional 5

6

7

Fractional 8

Fractional Lots

76

MAPS BOOK 30 PAGE 20

AVENUE

BELLE PORTE

100'

50'

50'

100'

50'

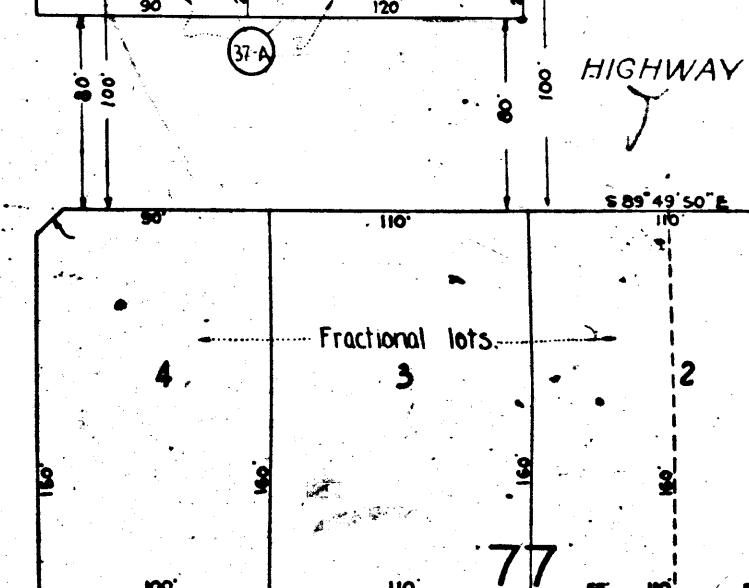
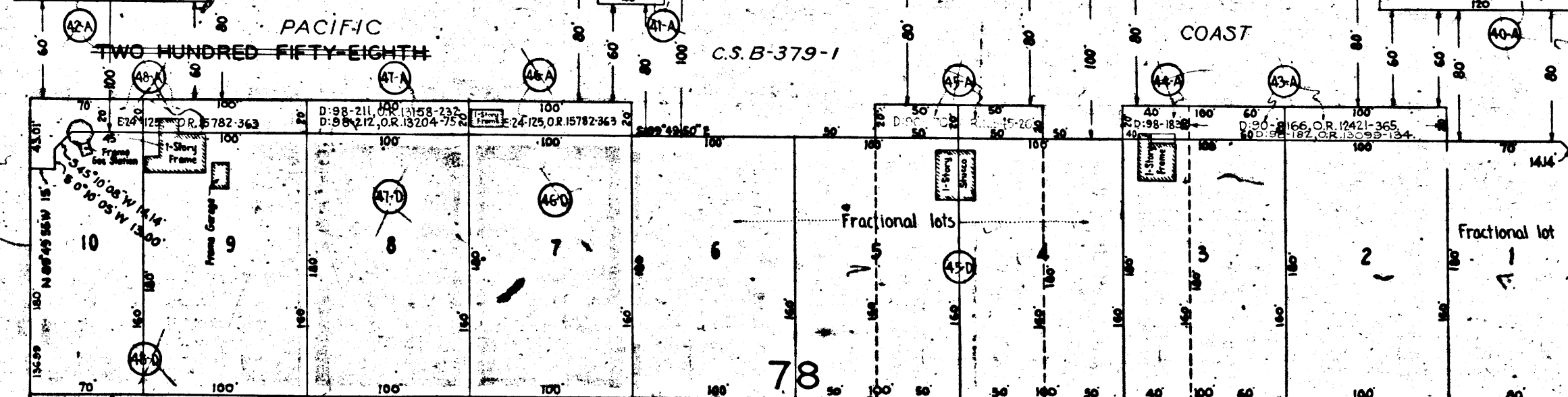
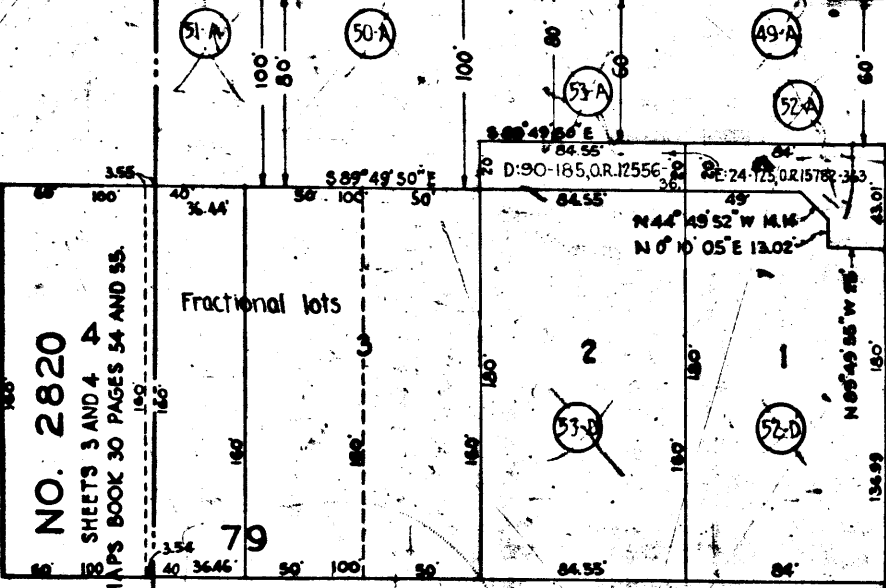
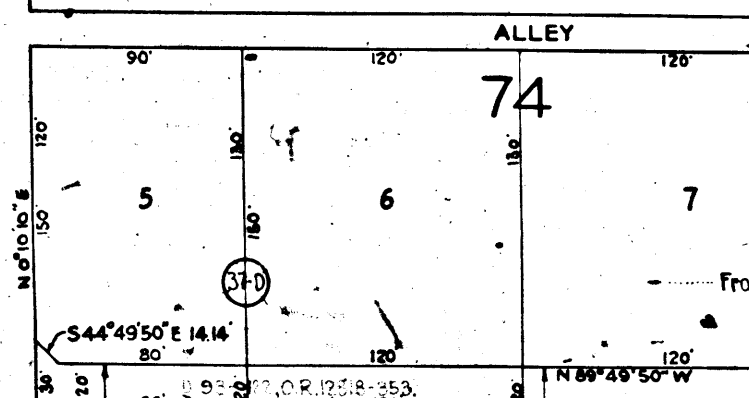
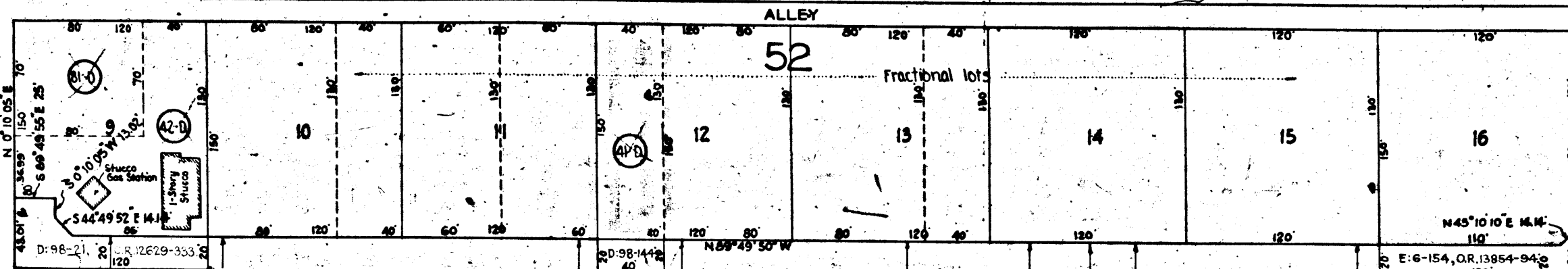
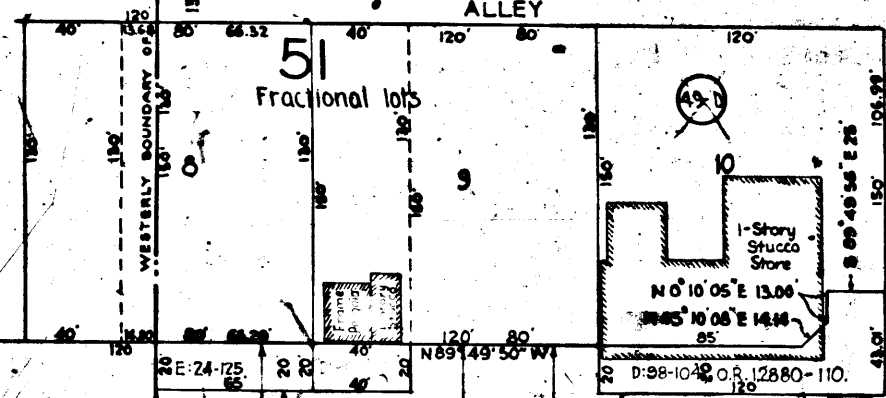
100'

50'

TRACT 1

TWO HUNDRED FIFTY-SEVENTH AVENUE NO. 1589 SHEET 2 MAPS BOOK 21 PAGE 74

TRACT



TRACT NO. 2820 SHEETS 3 AND 4 MAPS BOOK 30 PAGES 54 AND 55

TRACT SHEET 1

TRACT NO. 77

TWO HUNDRED FIFTY-NINTH AVENUE

