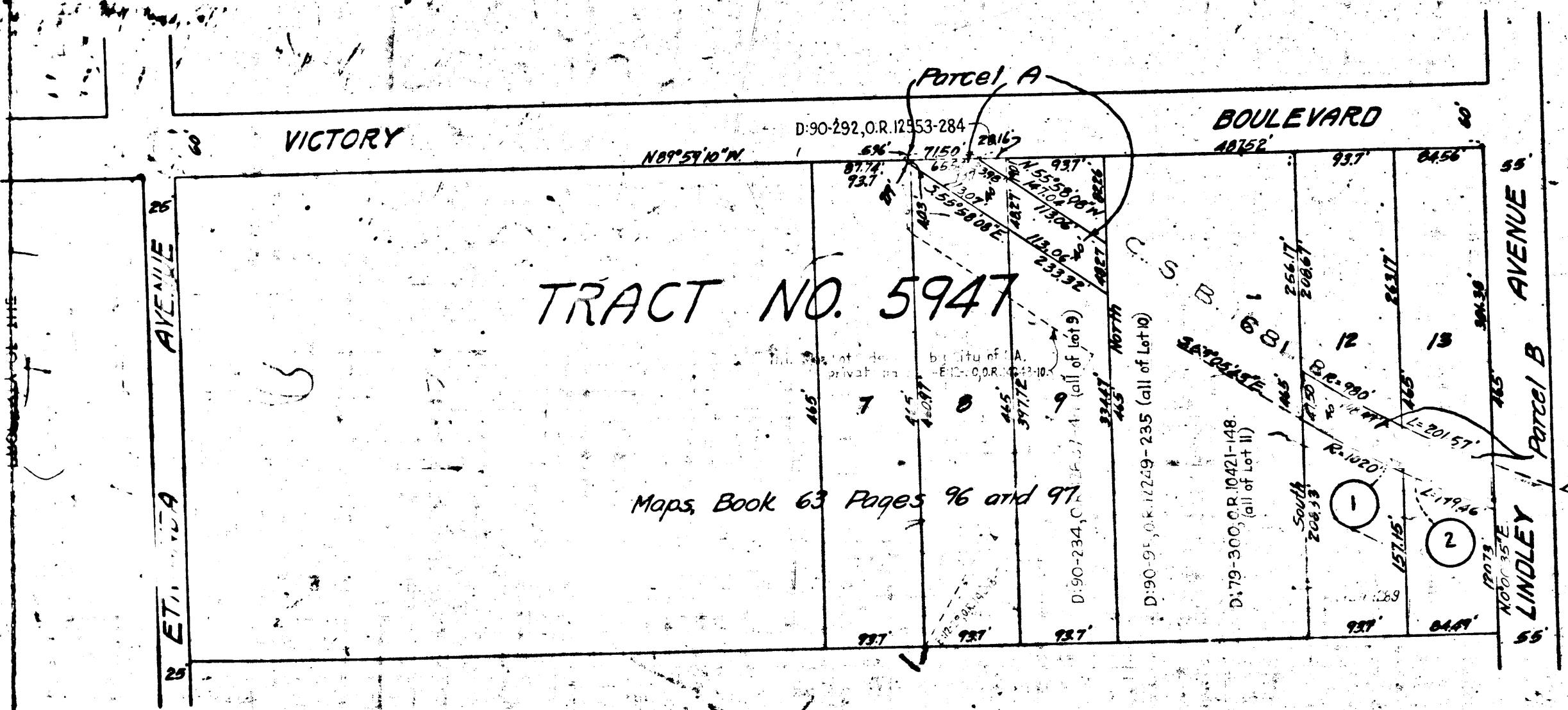


E.D. L.A. RIVER CHANNEL IN SERRANO VALLEY.
 FILE NO. 3258-6250-33. MAP NO. 37854.

MAP
 SHOWING CERTAIN EASEMENTS AND RIGHTS-OF-WAY
 TO BE CONDEMNED FOR
 FLOOD CONTROL PURPOSES
 FOR THE OPENING AND WIDENING,
 DEEPENING AND STRAIGHTENING THE
 CHANNEL OF THE
LOS ANGELES RIVER
 BETWEEN A POINT IN
 VICTORY BOULEVARD
 APPROXIMATELY FIVE HUNDRED TWENTY-THREE
 (523) FEET WESTERLY OF
 LINDLEY AVENUE
 AND A POINT IN
 LINDLEY AVENUE
 APPROXIMATELY THREE HUNDRED TWENTY-FIVE
 (325) FEET SOUTHERLY OF
 VICTORY BOULEVARD
 ALL IN ACCORDANCE WITH ORDINANCE NO. 73523.
 IN THE
 CITY OF LOS ANGELES, CALIF.
 LLOYD ALDRICH, CITY ENGINEER.
 APRIL 1934.
 SCALE: 1 INCH = 100 FEET.

TRACT NO. 5947

Maps Book 63 Pages 96 and 97.



Superior Court Case No. 37737
 Suit for Condemnation
 Filed Aug. 31, 1934.
 City of Los Angeles, Pltff.
 Vs
 Thomas A. Carmony, et al, Def.
 Order authorizing Plaintiff
 to take immediate possession,
 rendered Oct. 1, 1934.
 Interlocutory judgment as to
 parcels 1 and 2, rendered July
 3, 1935. Judg. Bk. 9 - 262.
 Final Judgment in favor of Pltff. as
 per map, rendered July 16, 1935.

NOTE:
 Easements and rights-of-way to be condemned
 shown colored red.
 Figures in circles indicate the parcel numbers as
 set forth in Paragraph VIII of the complaint

INDEX 57 **A-6346**

E:6-62, O.R. 13297-339.

A-63-A

A-63-A

CITY OF LOS ANGELES
 ENGINEER'S OFFICE

RETURN TO CITY ENGINEER'S OFFICE
 CITY OF LOS ANGELES