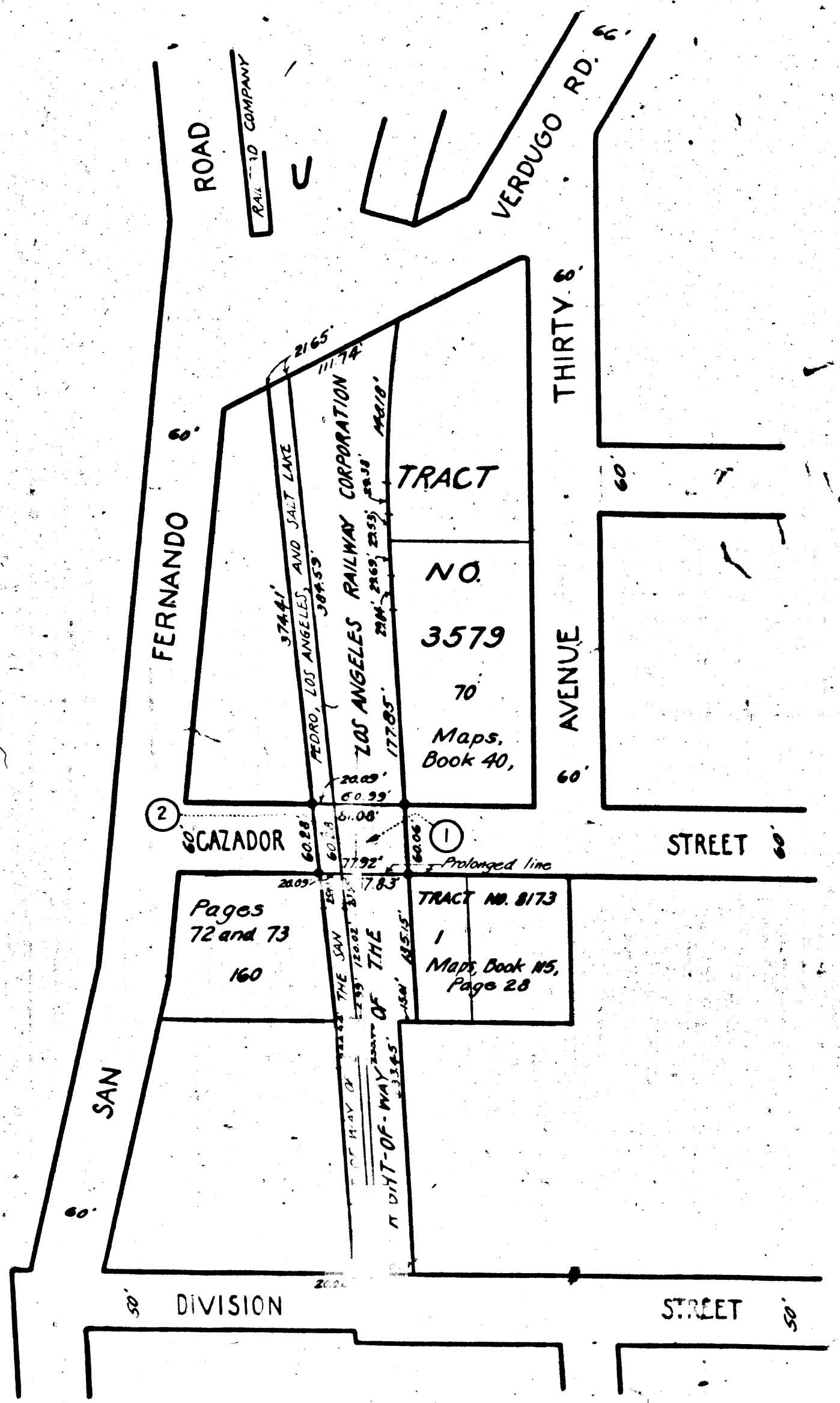
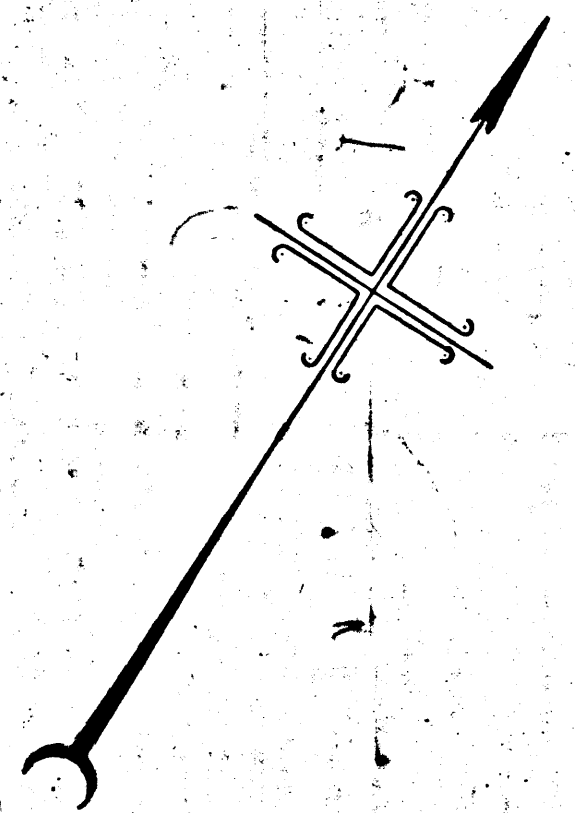


V-030-A

V-000-A

SEAL TO CITY ENGINEER'S OFFICE
CITY OF LOS ANGELES
PROPERTY OF THE



CAZADOR ST. A. R. L.A. & S. L. & L. A. R. Y. R/W IN CYPRESS AVE.
FILE NO. 4373-34 CHARGE NO. 47803

V-030-A

SEAL TO CITY ENGINEER'S OFFICE
CITY OF LOS ANGELES
PROPERTY OF THE

MAP

SHOWING THE LAND TO BE CONDEMNED
FOR THE
OPENING AND EXTENDING OF
CAZADOR STREET

FROM THE TERMINUS THEREOF APPROXIMATELY ONE
HUNDRED FIFTY (150) FEET SOUTHWESTERLY OF
AVENUE THIRTY

TO THE TERMINUS OF CAZADOR STREET
APPROXIMATELY ONE HUNDRED FIFTY
(150) FEET NORTHEASTERLY OF
SAN FERNANDO ROAD

IN THE
CITY OF LOS ANGELES, CALIFORNIA

IN ACCORDANCE WITH ORDINANCE NO. 74284

LLOYD ALDRICH CITY ENGINEER NOVEMBER 1934

SCALE 1" = 100' INDEX 41

Superior Court Case No. 3, 1928
Suit for Condemnation
Filed Dec. 27, 1934

City of Los Angeles, Plaintiff

L. A. Railway Corp. et al., Def.

Final Judgment in favor of Plff.
as per map rendered May 12, 1935.

E-6-31, O.R. 13497-5

Notes:

Land to be condemned shown colored red.
Figures in circles indicate parcel numbers as
set forth in paragraph VII of the complaint.