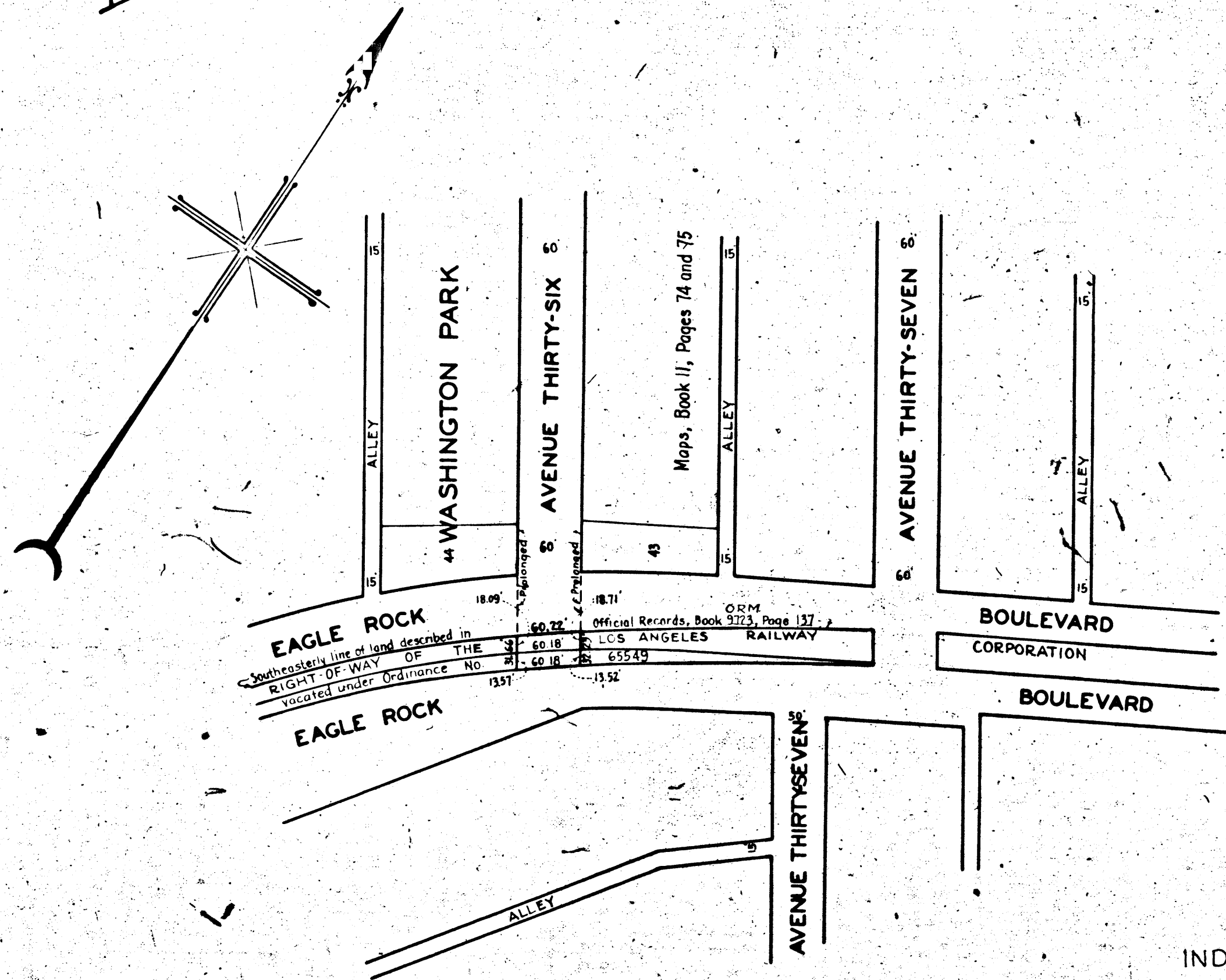


A-0375

A-0375



MAP
 SHOWING THE LAND TO BE CONDEMNED
 FOR THE OPENING AND EXTENDING OF
 AVENUE THIRTY-SIX
 ACROSS THE RIGHT OF WAY OF THE
 LOS ANGELES RAILWAY CORPORATION
 LYING BETWEEN THE SOUTHEASTERLY
 AND NORTHWESTERLY ROADWAYS OF
 EAGLE ROCK BOULEVARD
 IN THE
 CITY OF LOS ANGELES, CALIFORNIA
 IN ACCORDANCE WITH ORDINANCE NO. 74558
 LLOYD ALDRICH CITY ENGINEER DECEMBER 1934
 SCALE 1"=100'

Note: Land to be condemned shown colored red.

Superior Court Case No. 383795
 Suit for Condemnation
 Filed Feb. 19, 1935
 City of Los Angeles, Plaintiff
 Vs
 Andrietta G. Somers, et al., Def.
 Interlocutory judgment rendered
 May 7, 1935. J.B. 905-246.
 Final Judgment in favor of Plff. as
 per map, rendered June 14th, 1935.

E:6-42, O.R. 13424-331.

INDEX 41

A-0375

A-0375

A-6372