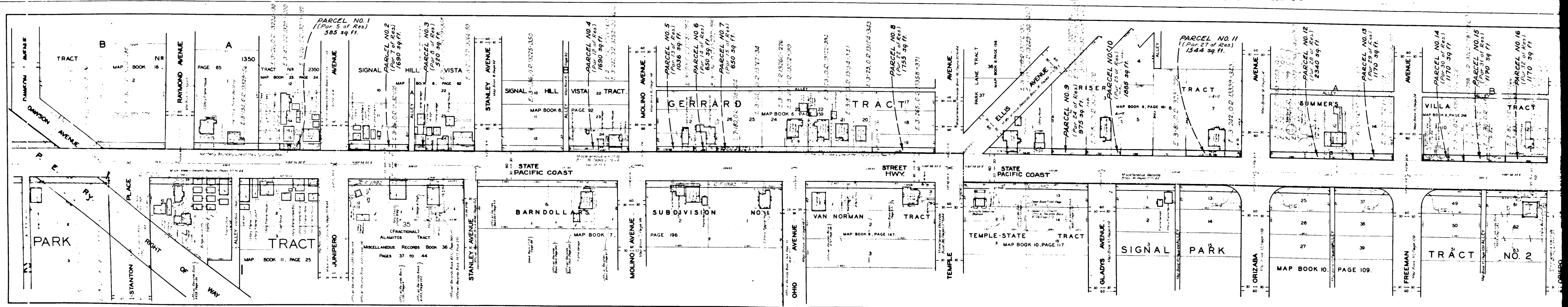


Superior Court Case No. 38551
Filed Mar. 25, 1935
People of the State of Cal., Plffs.
vs.
Peoples Escrow Corp., et al., Defs.
Order of sale of real property
under a judgment of the Superior Court
dated May 15, 1935.
Final Judgment in favor of Plaintiff
dated Feb. 29, 1935.
Rate withheld as to parcels 1, 2, 5, 6,
7, 8, 9, 10, 11, 12, 13, 14, 15, 16,
17, 18, 19, 20, 21, 22, 23, 24, 25.
One dismissed as to parcels 4, 8
on Feb. 29, 1935.
Final Judgment in favor of Plaintiff as
to parcels 1, 2, 3, 4, 5, 6, 7, 8, 9, 10, 11, 12, 13, 14, 15, 16, 17, 18, 19, 20, 21, 22, 23, 24, 25.
E16-73 OR 1733-127
E16-73 OR 1733-127

C.F. 1991 -



2

C.F. 1991 -