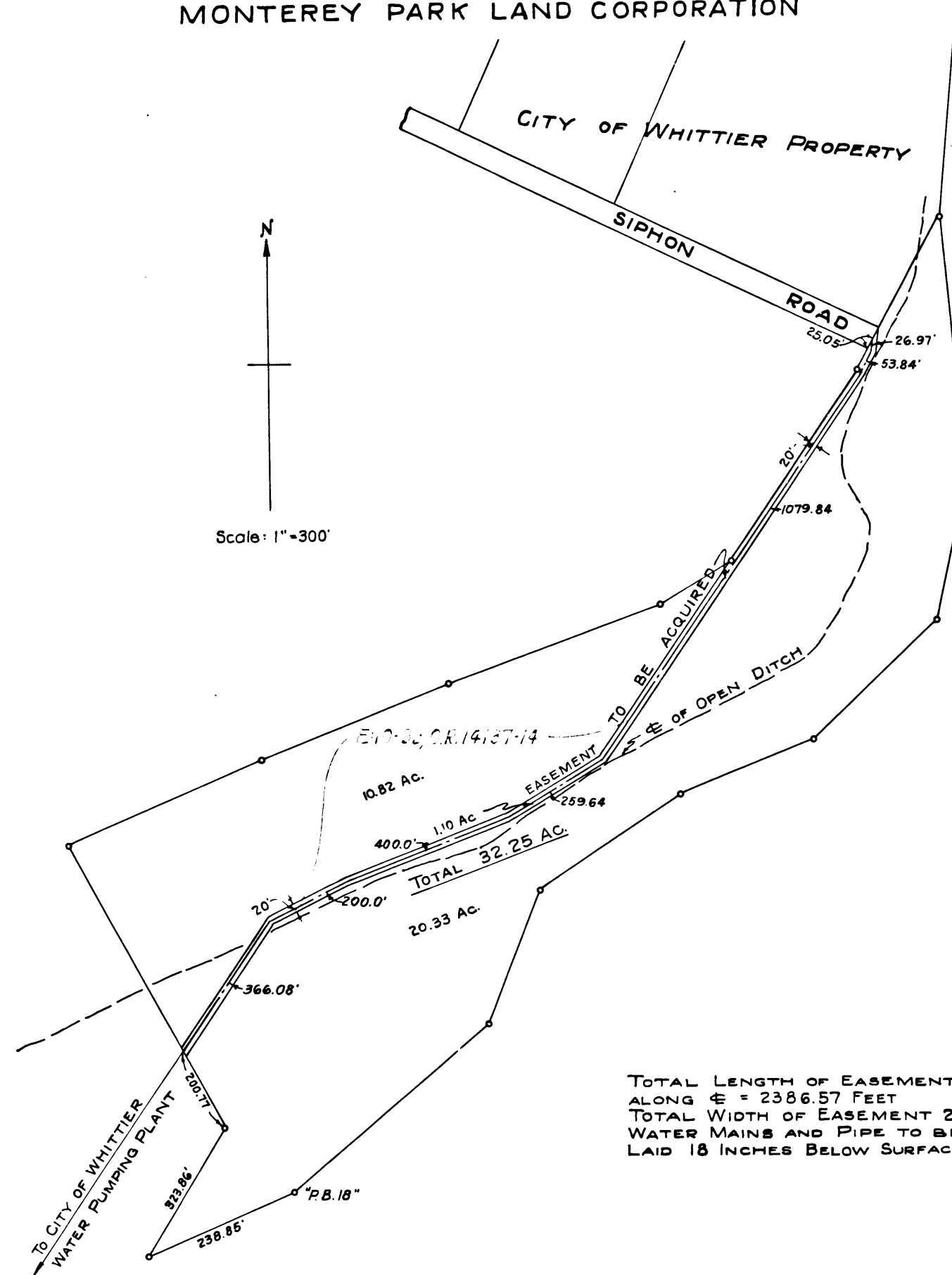


107
810

PLAN SHOWING
EASEMENT TO BE ACQUIRED
OVER PROPERTY OF THE
MONTEREY PARK LAND CORPORATION



TOTAL LENGTH OF EASEMENT
ALONG ϵ = 2386.57 FEET
TOTAL WIDTH OF EASEMENT 20'
WATER MAINS AND PIPE TO BE
LAID 18 INCHES BELOW SURFACE.

INDEX 37

Superior Court Case No. 386998
Suit for Condemnation
Filed Apr. 25, 1935
City of Whittier, Pltff.

Vs.
Monterey Park Land Corp. et al. Def.

Order authorizing Plaintiff to
take immediate possession, ren-
dered Apr. 25, 1935.

Case dismissed Dec. 30, 1935

EXHIBIT A

CITY OF WHITTIER
ENGINEERING DEPT.

WD-31

C.F. 1993 -

WEMCO
PASADENA, CAL.

957

1011H

WEMCO
PASADENA, CAL.

957

501H