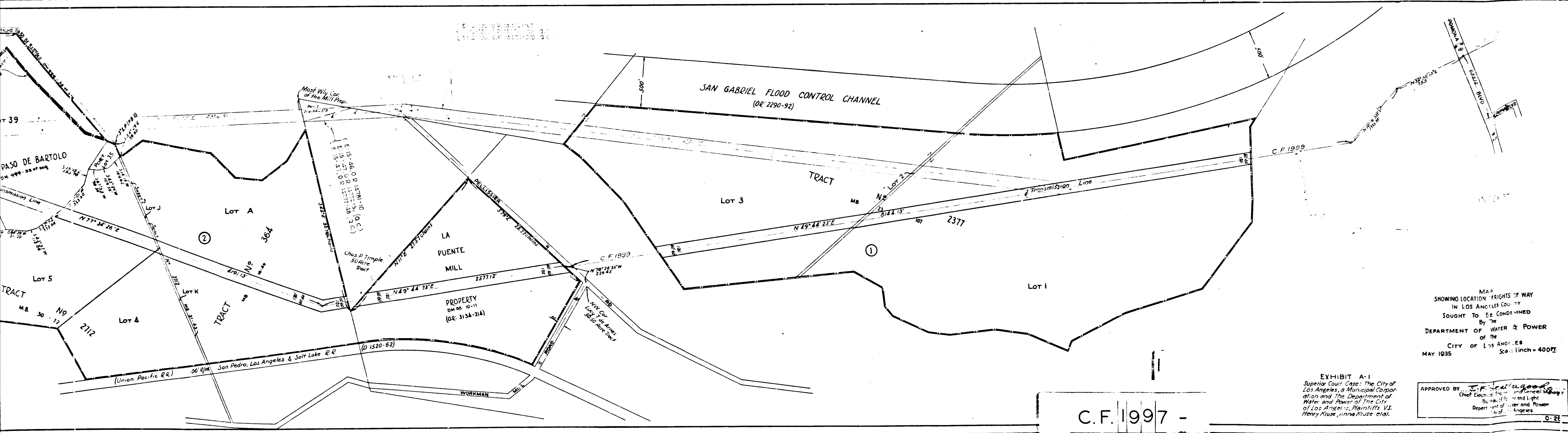


Superior Court Case No. 380  
 Suit for Condemnation  
 Filed May 21, 1935  
 City of Los Angeles, Plaintiff  
 Vs.  
 Henry Kruse, et al., Defendants  
 Evid. Vol. 1, p. 207  
 Inter. jud. as to parcels DE and F rendered June 3, 1935, J.E. 105-186  
 Case dismissed as to parcels DE and F on March 3, 1936  
 Evid. Vol. 1, p. 207  
 E. 28 24, 25, 26, 27, 28, 29, 30, 31, 32, 33

MAP  
 SHOWING LOCATION OF RIGHTS OF WAY  
 IN LOS ANGELES COUNTY  
 SOUGHT TO BE CONDEMNED  
 By The  
 DEPARTMENT OF WATER & POWER  
 of The  
 CITY OF LOS ANGELES  
 MAY 1935 Scale 1 inch = 400'

EXHIBIT A-3  
 Superior Court Case: The City of Los Angeles, a Municipal Corporation and The Department of Water and Power of The City of Los Angeles, Plaintiffs vs. Henry Kruse, Anna Kruse, et al.

APPROVED BY: *E. F. ...*  
 Chief Electrical Engineer and General Manager  
 Bureau of Power and Light  
 Department of Water and Power  
 City of Los Angeles

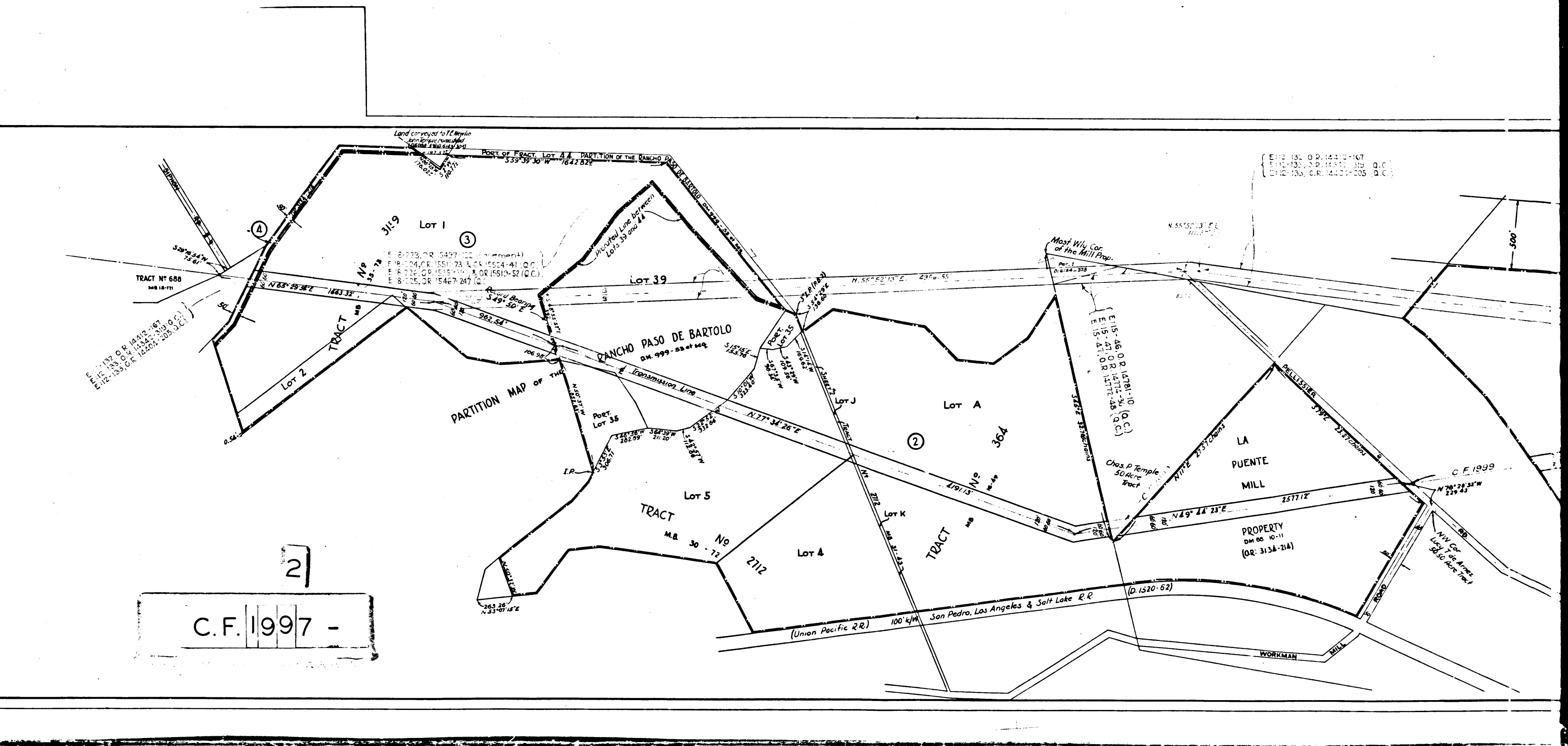
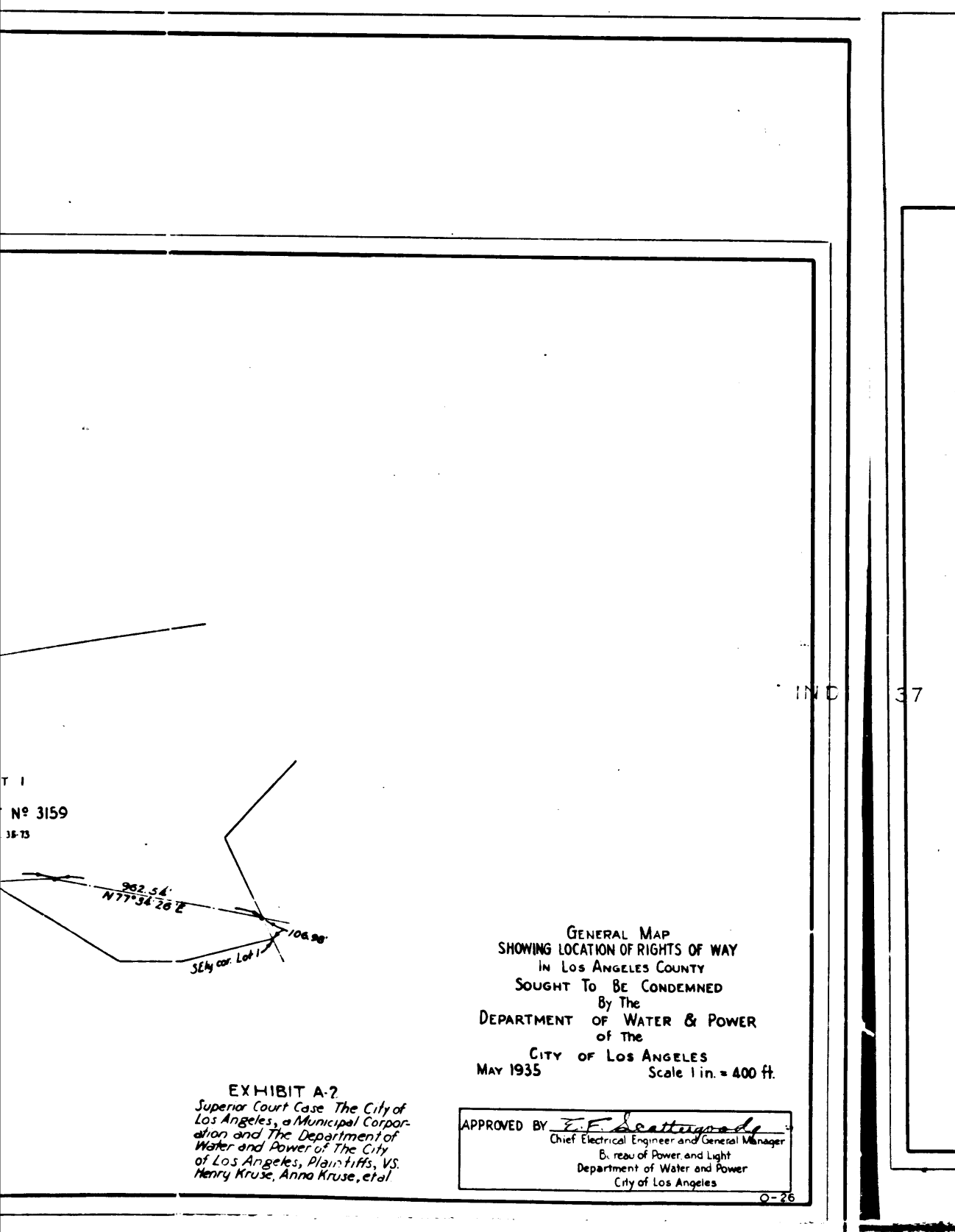
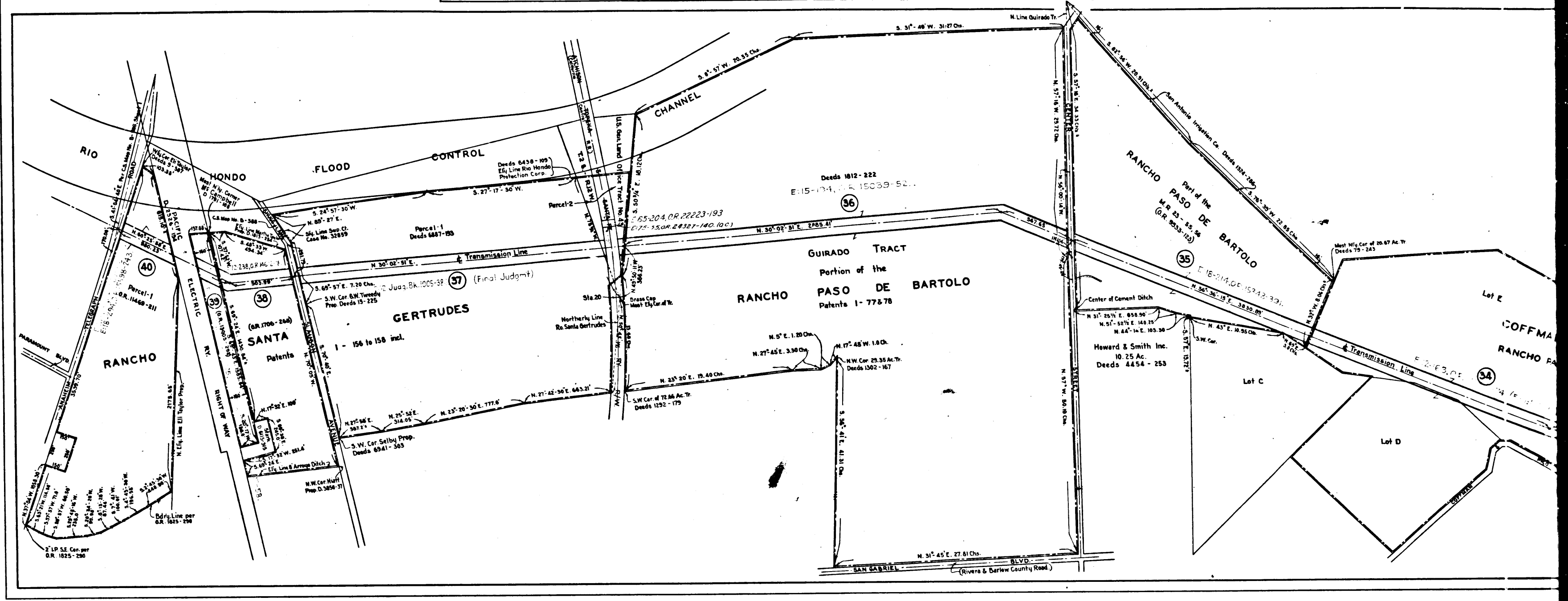
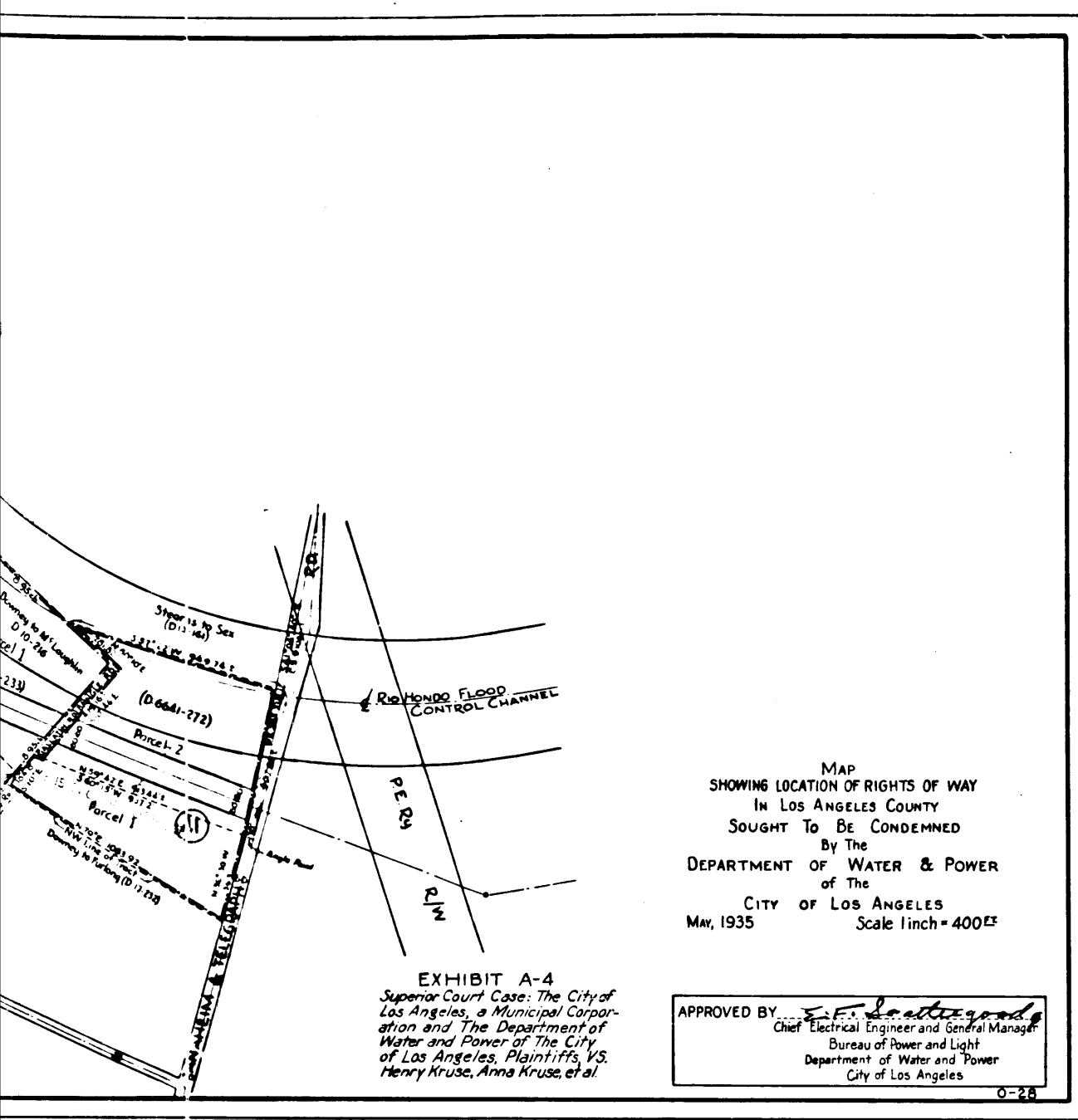


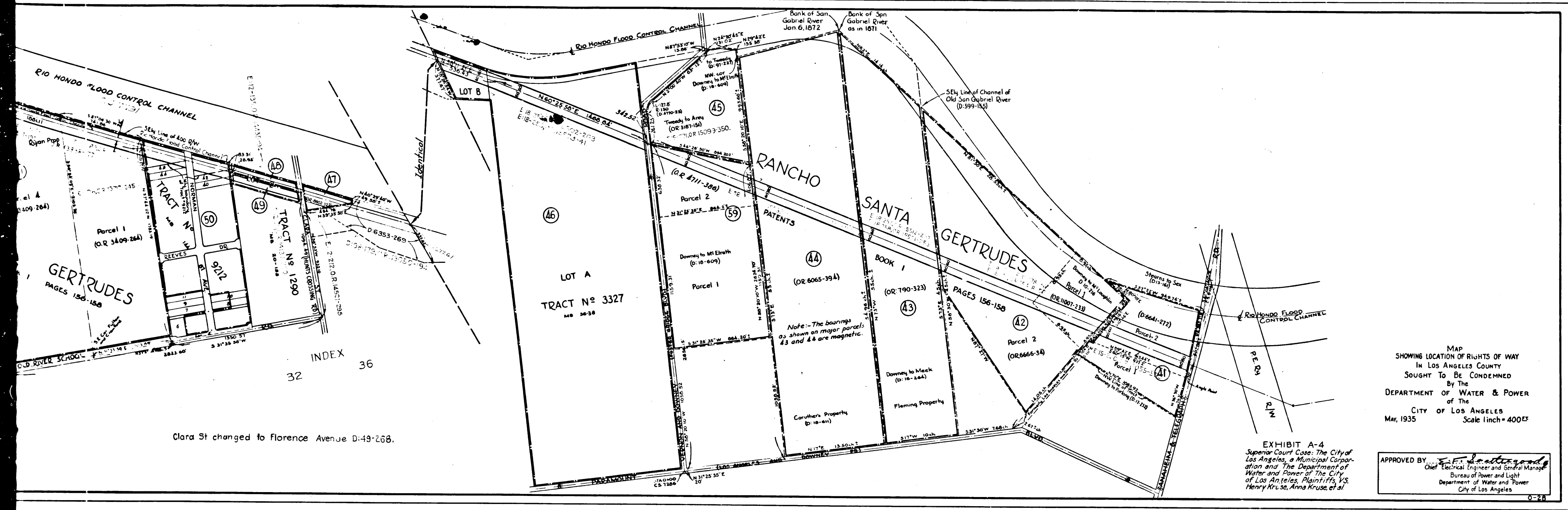
MAP  
 SHOWING LOCATION OF RIGHTS OF WAY  
 IN LOS ANGELES COUNTY  
 SOUGHT TO BE CONDEMNED  
 By The  
 DEPARTMENT OF WATER & POWER  
 of The  
 CITY OF LOS ANGELES  
 MAY 1935 Scale 1 inch = 400'

EXHIBIT A-1  
 Superior Court Case: The City of Los Angeles, a Municipal Corporation and The Department of Water and Power of The City of Los Angeles, Plaintiffs vs. Henry Kruse, Anna Kruse, et al.

APPROVED BY: *E. F. ...*  
 Chief Electrical Engineer and General Manager  
 Bureau of Power and Light  
 Department of Water and Power  
 City of Los Angeles

C.F. 1997 -

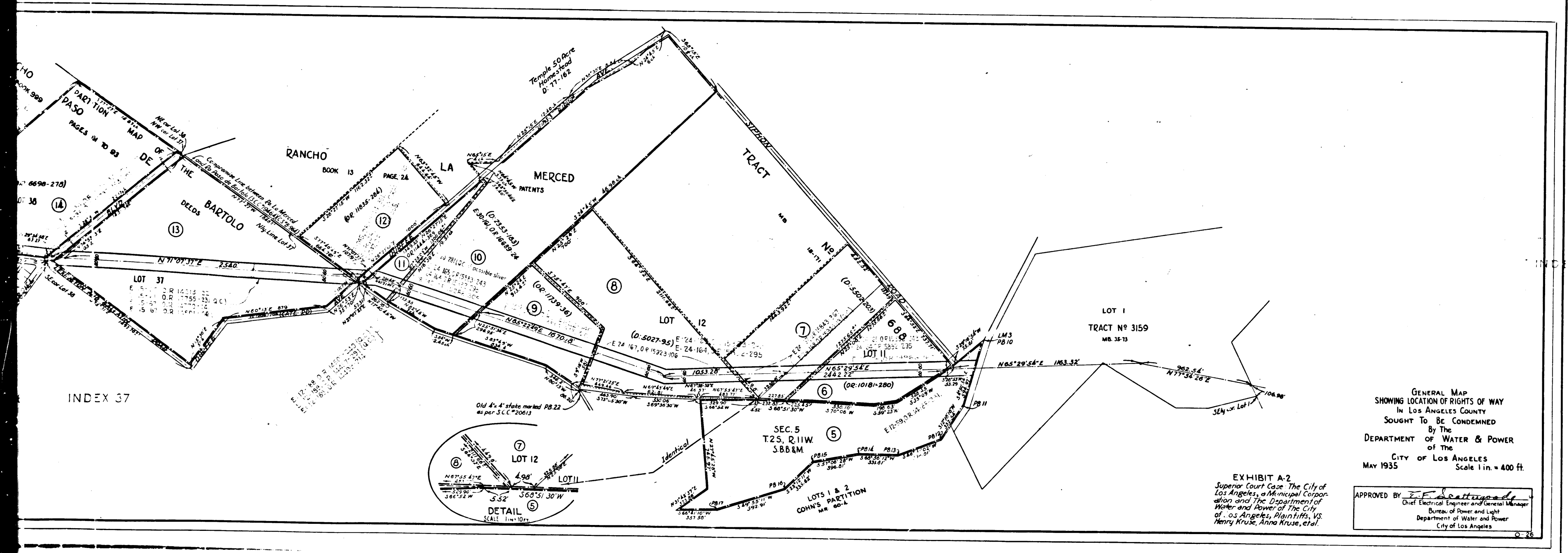
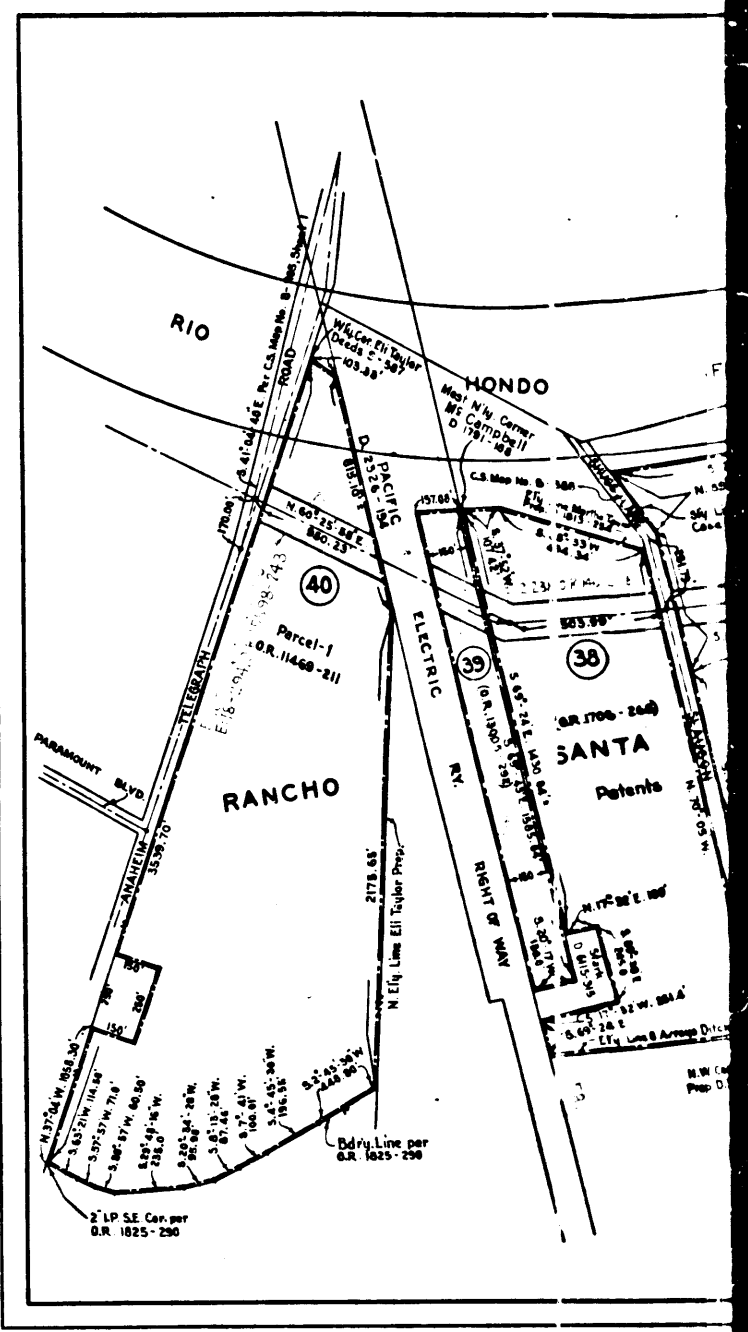




MAP  
SHOWING LOCATION OF RIGHTS OF WAY  
IN LOS ANGELES COUNTY  
SOUGHT TO BE CONDEMNED  
By The  
DEPARTMENT OF WATER & POWER  
of The  
CITY OF LOS ANGELES  
May, 1935  
Scale 1 inch = 400 FT

APPROVED BY: *[Signature]*  
Chief Electrical Engineer and General Manager  
Bureau of Power and Light  
Department of Water and Power  
City of Los Angeles

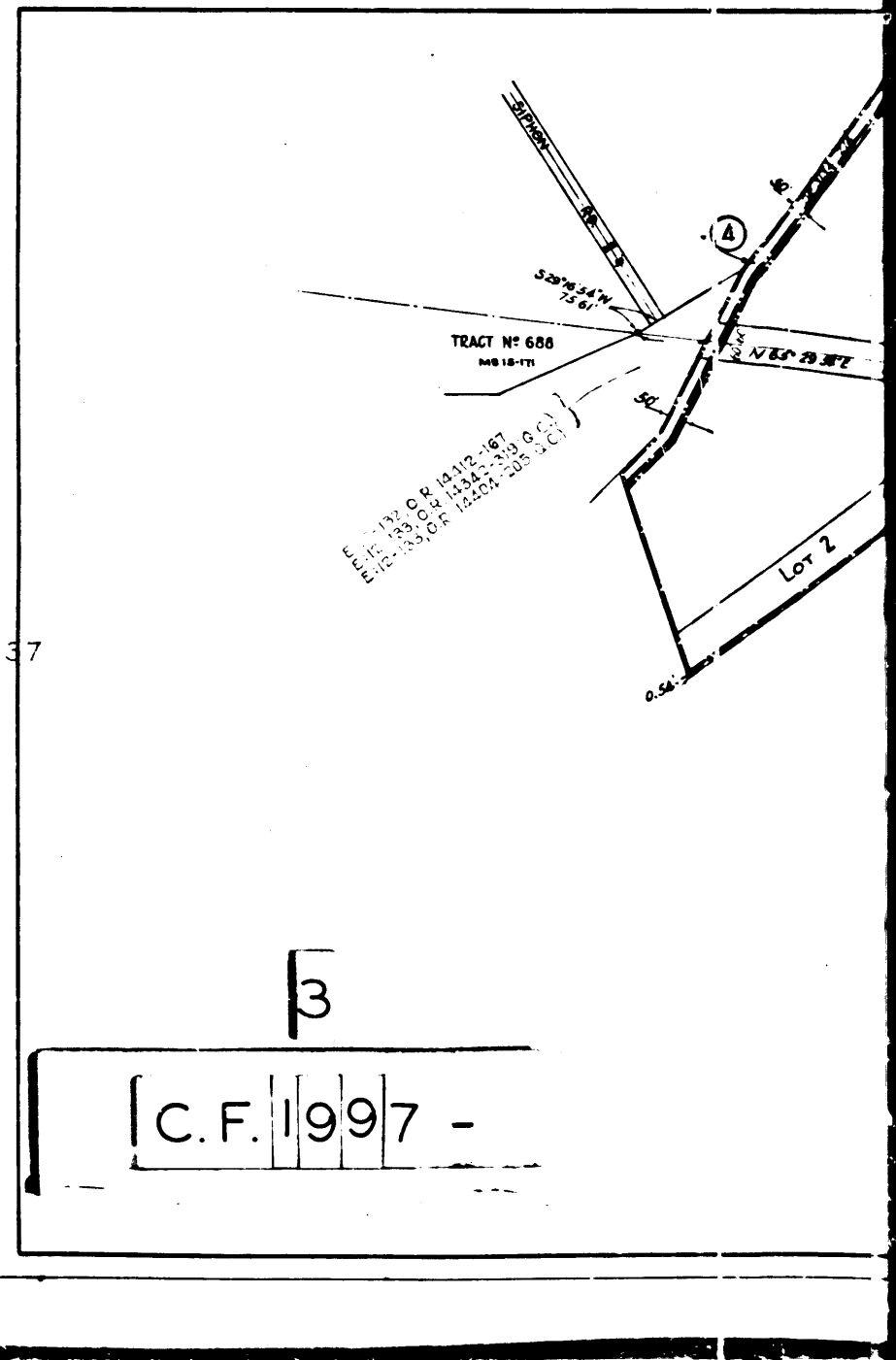
EXHIBIT A-4  
Superior Court Case: The City of  
Los Angeles, a Municipal Corporation  
and The Department of  
Water and Power of The City  
of Los Angeles, Plaintiffs, VS.  
Henry Kruse, Anna Kruse, et al

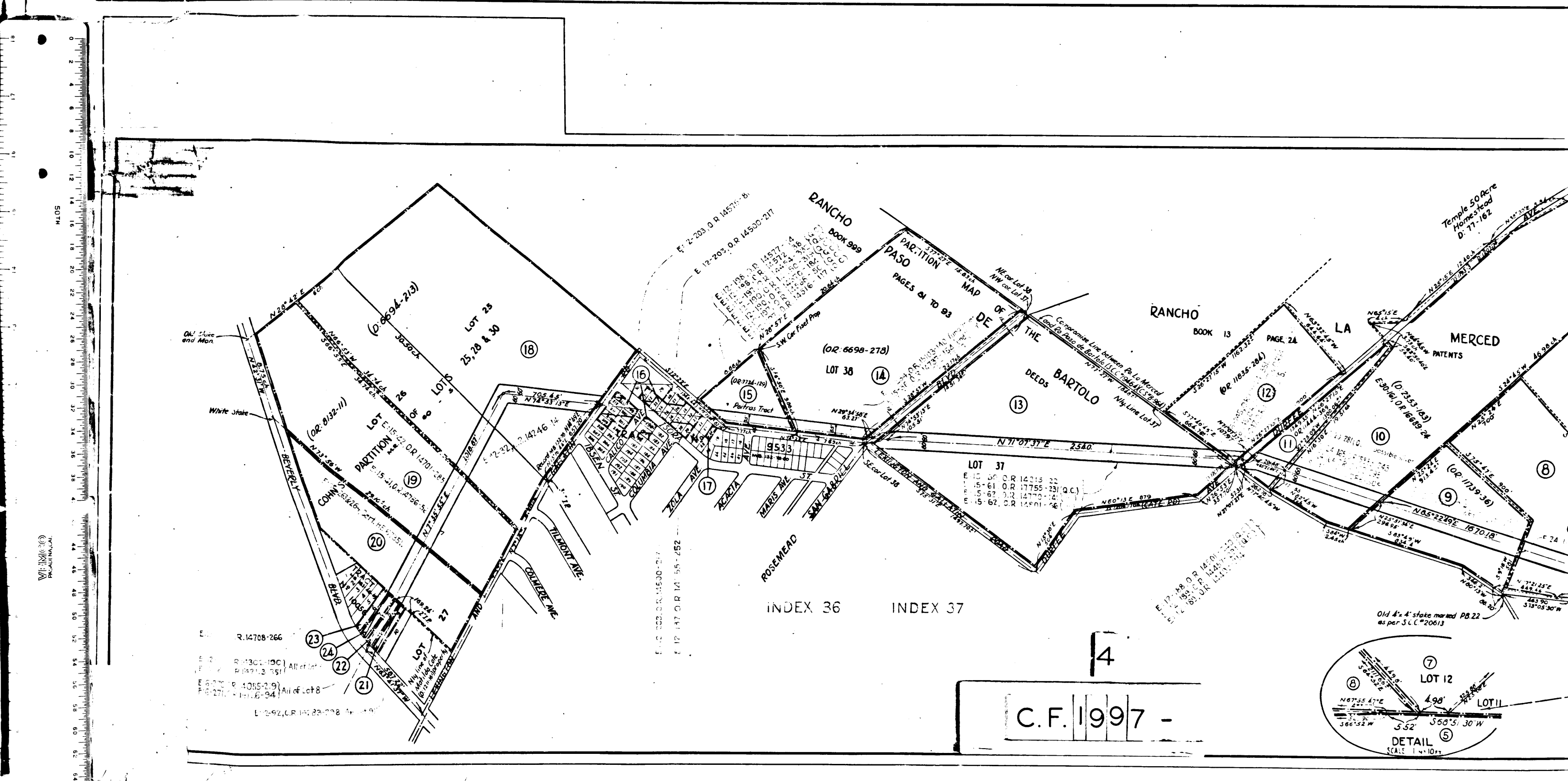
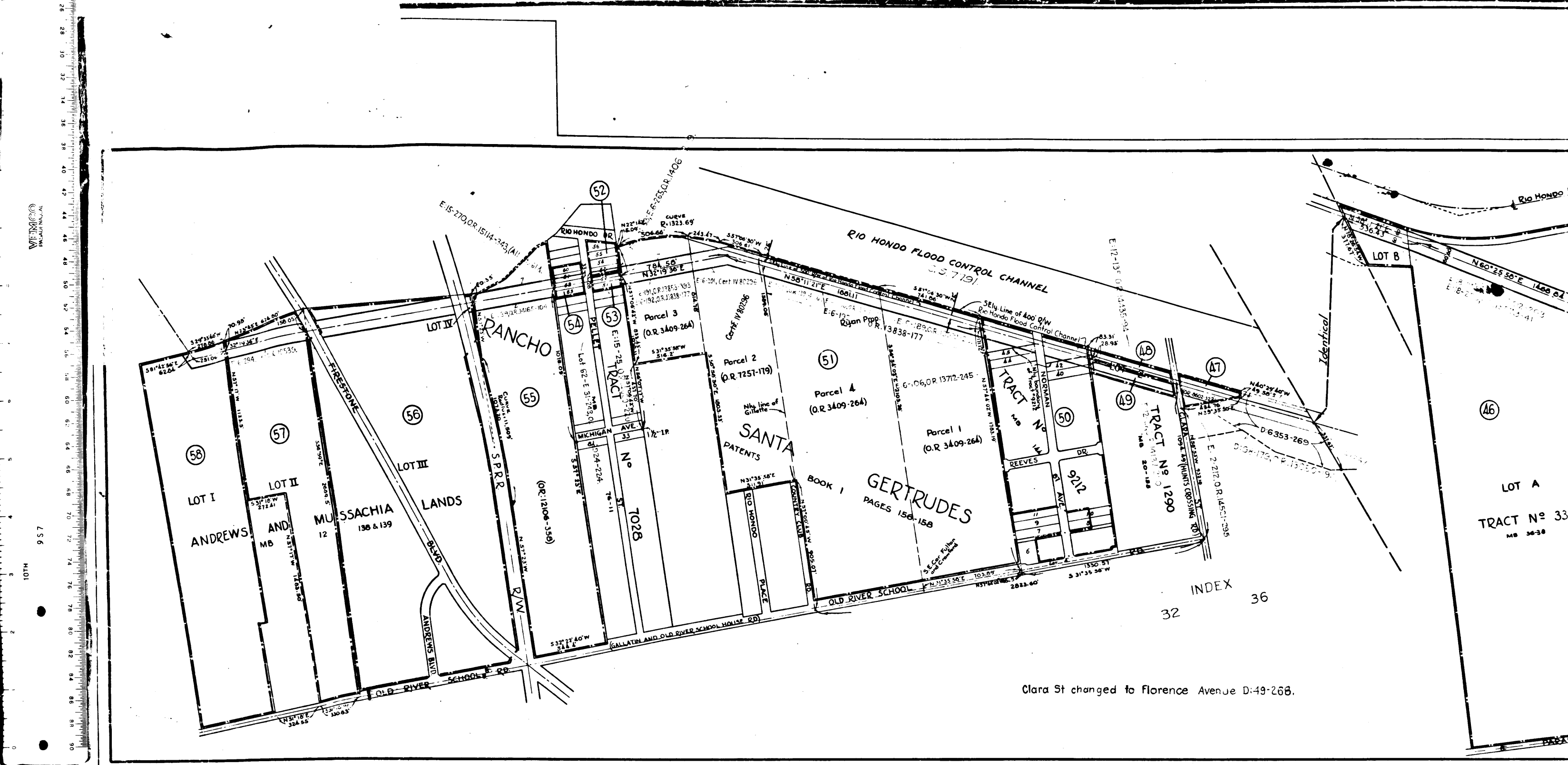


GENERAL MAP  
SHOWING LOCATION OF RIGHTS OF WAY  
IN LOS ANGELES COUNTY  
SOUGHT TO BE CONDEMNED  
By The  
DEPARTMENT OF WATER & POWER  
of The  
CITY OF LOS ANGELES  
May 1935  
Scale 1 in. = 400 ft.

APPROVED BY: *[Signature]*  
Chief Electrical Engineer and General Manager  
Bureau of Power and Light  
Department of Water and Power  
City of Los Angeles

EXHIBIT A-2  
Superior Court Case: The City of  
Los Angeles, a Municipal Corporation  
and The Department of  
Water and Power of The City  
of Los Angeles, Plaintiffs, VS.  
Henry Kruse, Anna Kruse, et al





C.F. 1997 -

