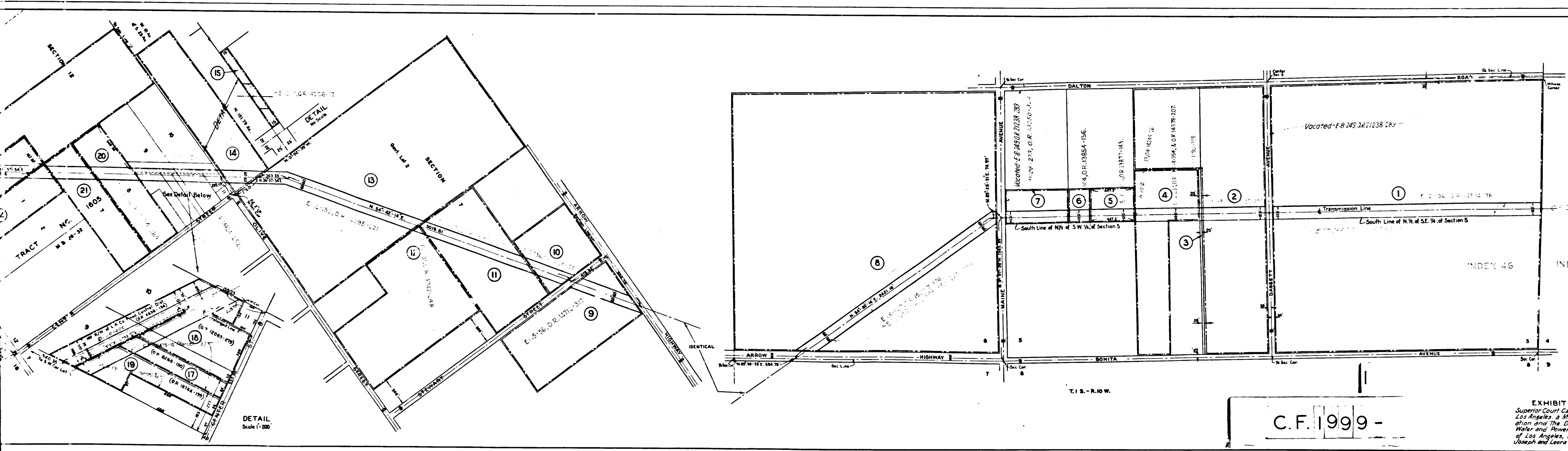


MAP  
SHOWING LOCATION OF RIGHTS OF WAY  
IN LOS ANGELES COUNTY  
SOUGHT TO BE CONDEMNED  
By The  
DEPARTMENT OF WATER & POWER  
of The  
CITY OF LOS ANGELES  
Feb. 1935 Scale 1 inch = 400'

EXHIBIT A-2  
Superior Court Case: The City of Los Angeles, a Municipal Corporation and The Department of Water and Power of the City of Los Angeles, Plaintiffs, vs. Joseph and Leon Musso, et al.

APPROVED BY: [Signature]  
Chief Electrical Engineer and General Manager  
Bureau of Water and Light  
Department of Water and Power  
City of Los Angeles



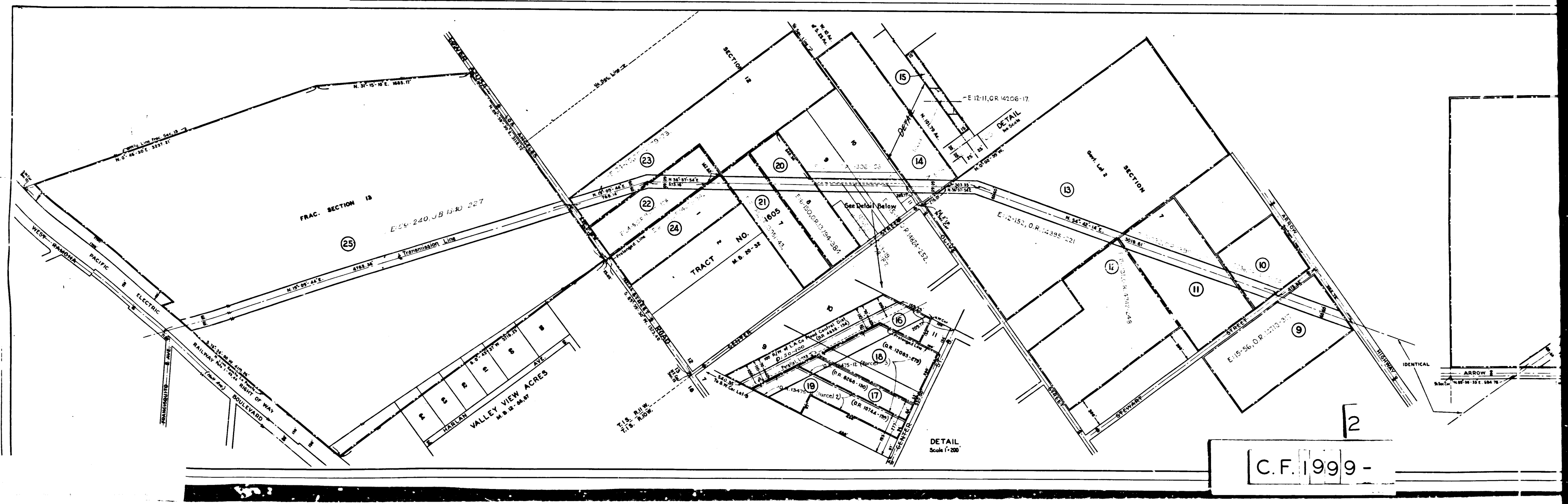
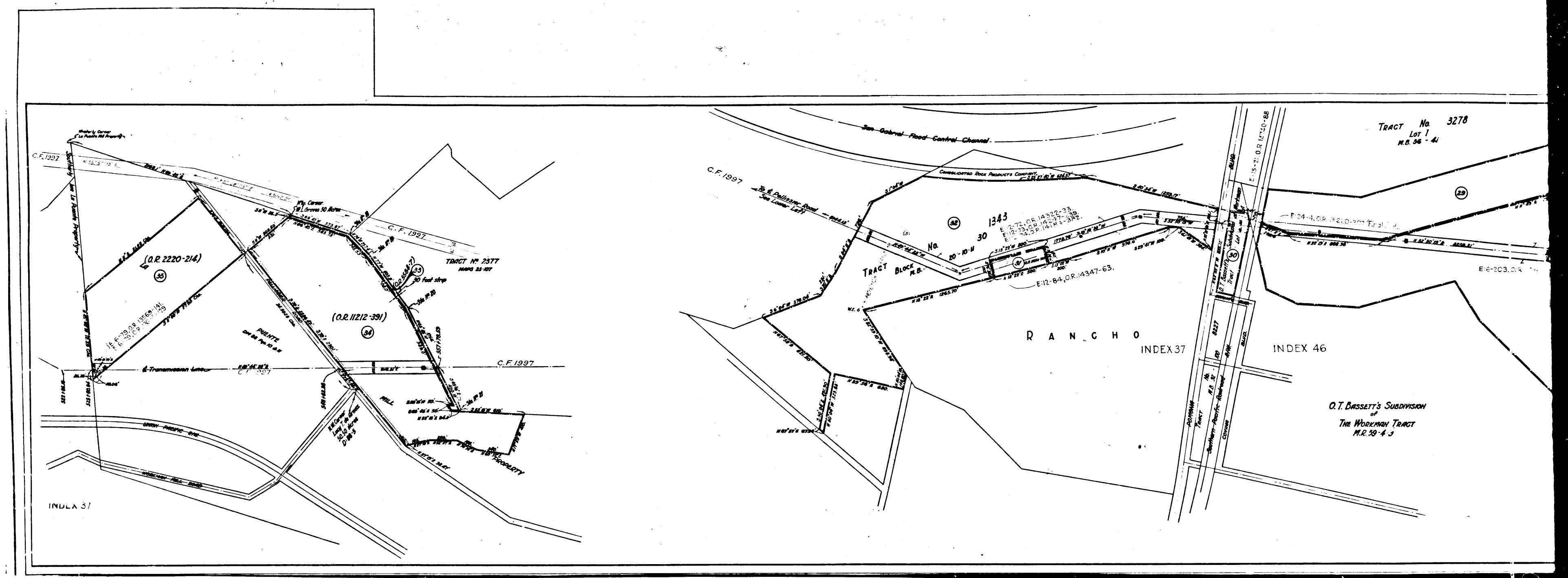
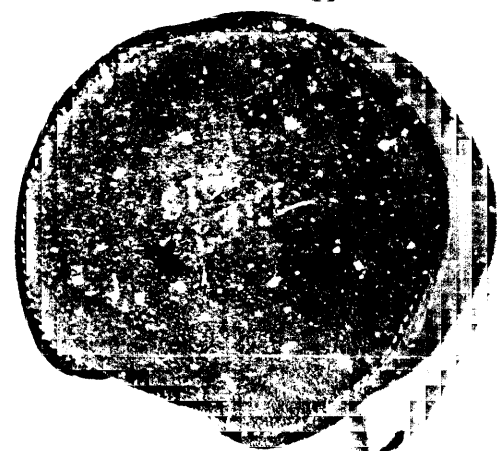
Superior Court Case No. 38487  
San Gabriel, et al. vs. City of Los Angeles  
Filed Feb 25, 1930  
City of Los Angeles, Plaintiff  
vs.  
Joseph Musso, et al., Defendants

MAP  
SHOWING LOCATION OF RIGHTS OF WAY  
IN LOS ANGELES COUNTY  
SOUGHT TO BE CONDEMNED  
By The  
DEPARTMENT OF WATER & POWER  
of The  
CITY OF LOS ANGELES  
Feb. 1935 Scale 1 inch = 400'

EXHIBIT A-1  
Superior Court Case: The City of Los Angeles, a Municipal Corporation and The Department of Water and Power of the City of Los Angeles, Plaintiffs, vs. Joseph and Leon Musso, et al.

APPROVED BY: [Signature]  
Chief Electrical Engineer and General Manager  
Bureau of Water and Light  
Department of Water and Power  
City of Los Angeles

C.F. 1999 -



C.F. 1999 -