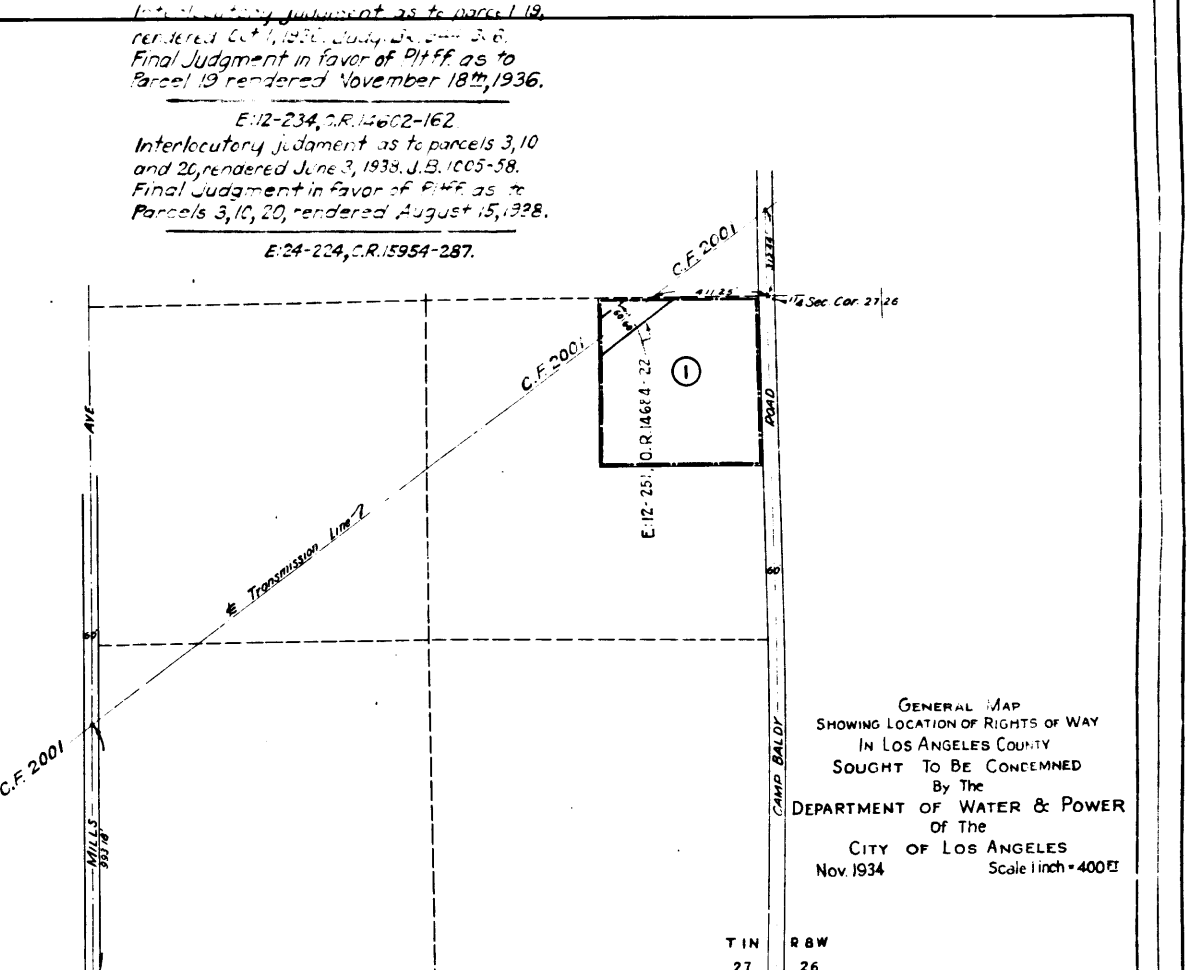
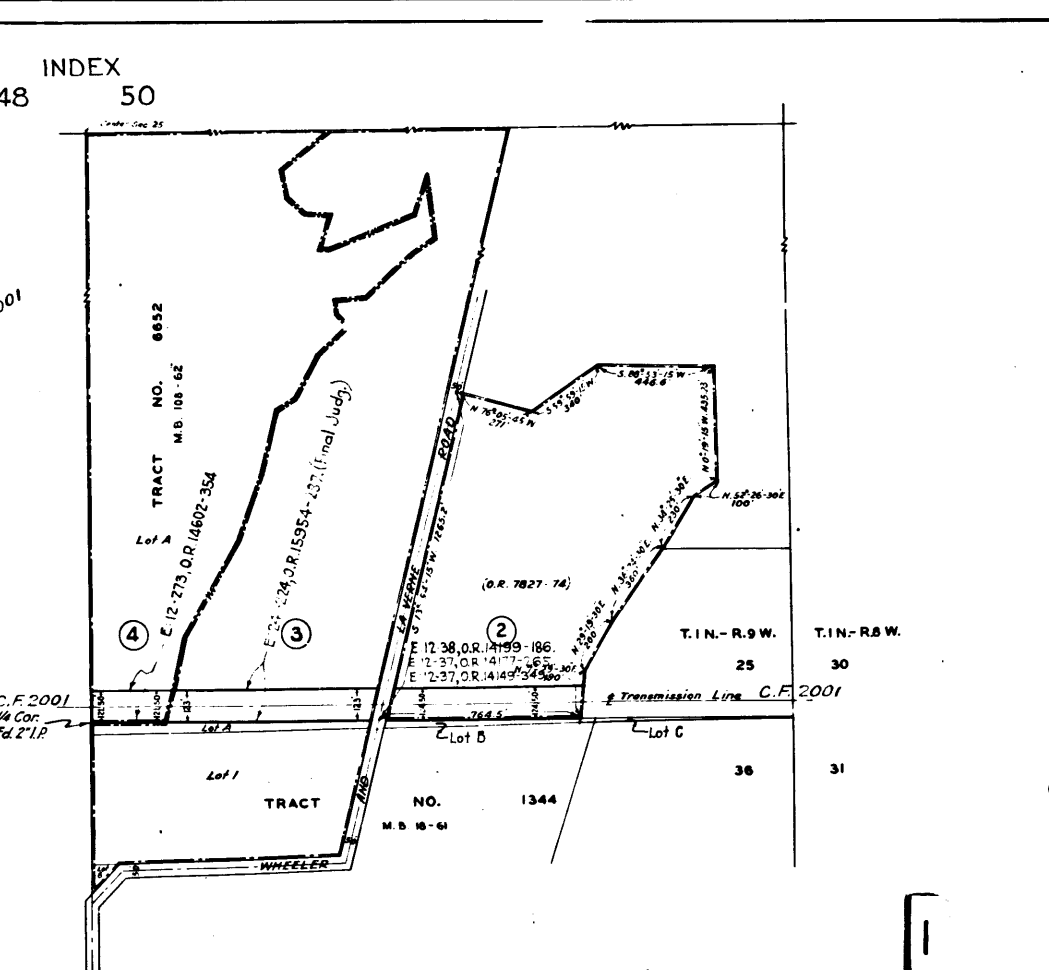
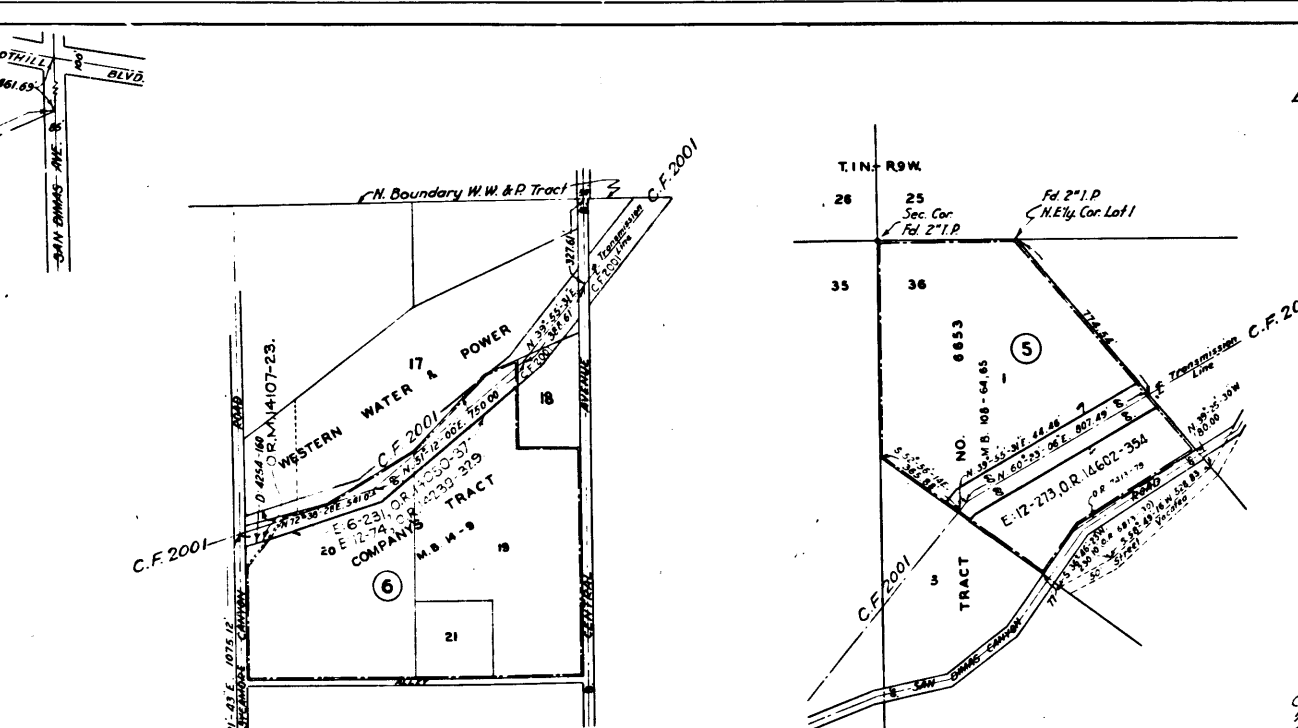
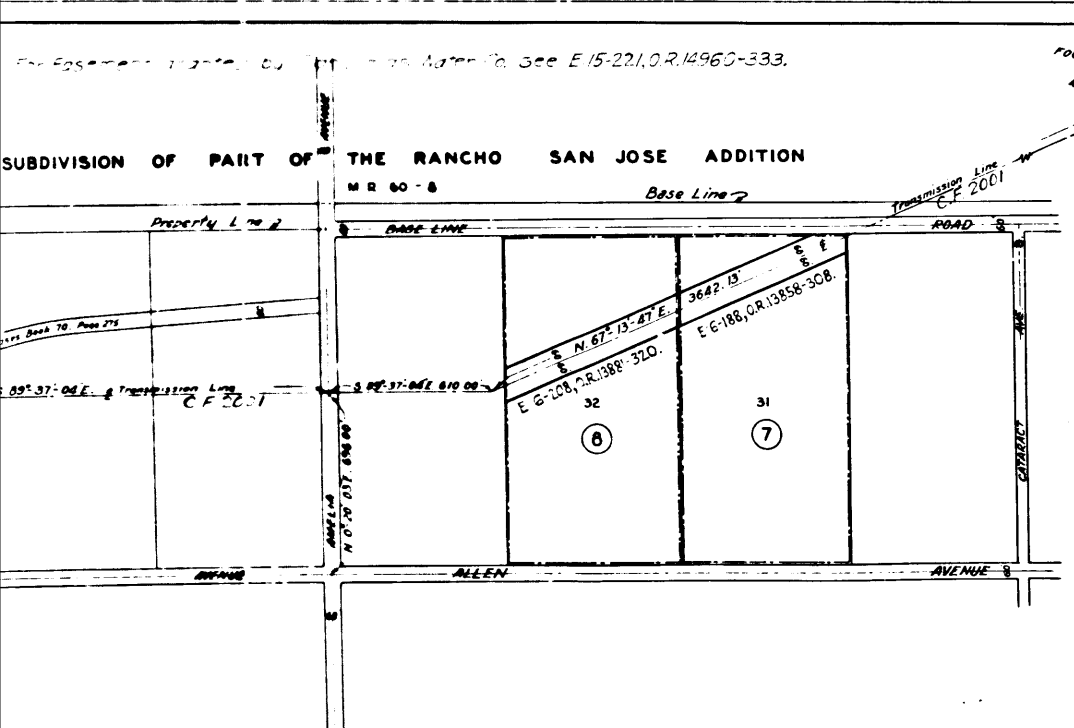


Scale	1 in = 400 Ft	Date	
Drawn	A.K.K.	11-15-34	
Traced	A.K.K.	11-21-34	
Checked			
	ELECTRICAL ENGINEER DESIGN & CONSTRUCTION		
	ELECTRICAL ENGINEER OPERATION		
	DESIGN ENGINEER		
	CHIEF ELECTRICAL ENGINEER		

CONDEMNATION - EXHIBIT A-2, GIROUX SUIT
 ORANGE AVE. - BEN LOMOND AVE.
 BOULDER DAM TRANSMISSION LINE

BUREAU OF POWER AND LIGHT
 DEPARTMENT OF WATER & POWER CITY OF LOS ANGELES

DRAWING NUMBER
0-16



Superior Court Case No. 383541
 Suit for Condemnation
 Filed Feb. 13, 1935
 City of Los Angeles, Plaintiff
 Vs
 Louis D. Giroux, et al., Defendants
 Order authorizing PHFF to take
 immediate possession, rendered
 Oct. 16, 1935.
 Interlocutory judgment as to parcels 1, 18,
 rendered Oct. 1935, July 23, 1936, 2-6.
 Final Judgment in favor of PHFF as to
 Parcel 18 rendered November 18th, 1936.
 E-12-234, C.R. 1936-162
 Interlocutory judgment as to parcels 3, 10
 and 26, rendered June 3, 1936, J.B. 1005-58.
 Final Judgment in favor of PHFF as to
 Parcels 3, 10, 20, rendered August 15, 1938.
 E-24-224, C.R. 1938-287.

Scale	1 in = 400 Ft	Date	
Drawn	G.F.S.	11-27-34	
Traced	G.F.S.	11-27-34	
Checked			
	ELECTRICAL ENGINEER DESIGN & CONSTRUCTION		
	ELECTRICAL ENGINEER OPERATION		
	DESIGN ENGINEER		
	CHIEF ELECTRICAL ENGINEER		

CONDEMNATION - EXHIBIT A-1, GIROUX SUIT
 BEN LOMOND AVE - CAMP BALDY ROAD
 BOULDER DAM TRANSMISSION LINE

BUREAU OF POWER AND LIGHT
 DEPARTMENT OF WATER & POWER CITY OF LOS ANGELES

DRAWING NUMBER
0-15

