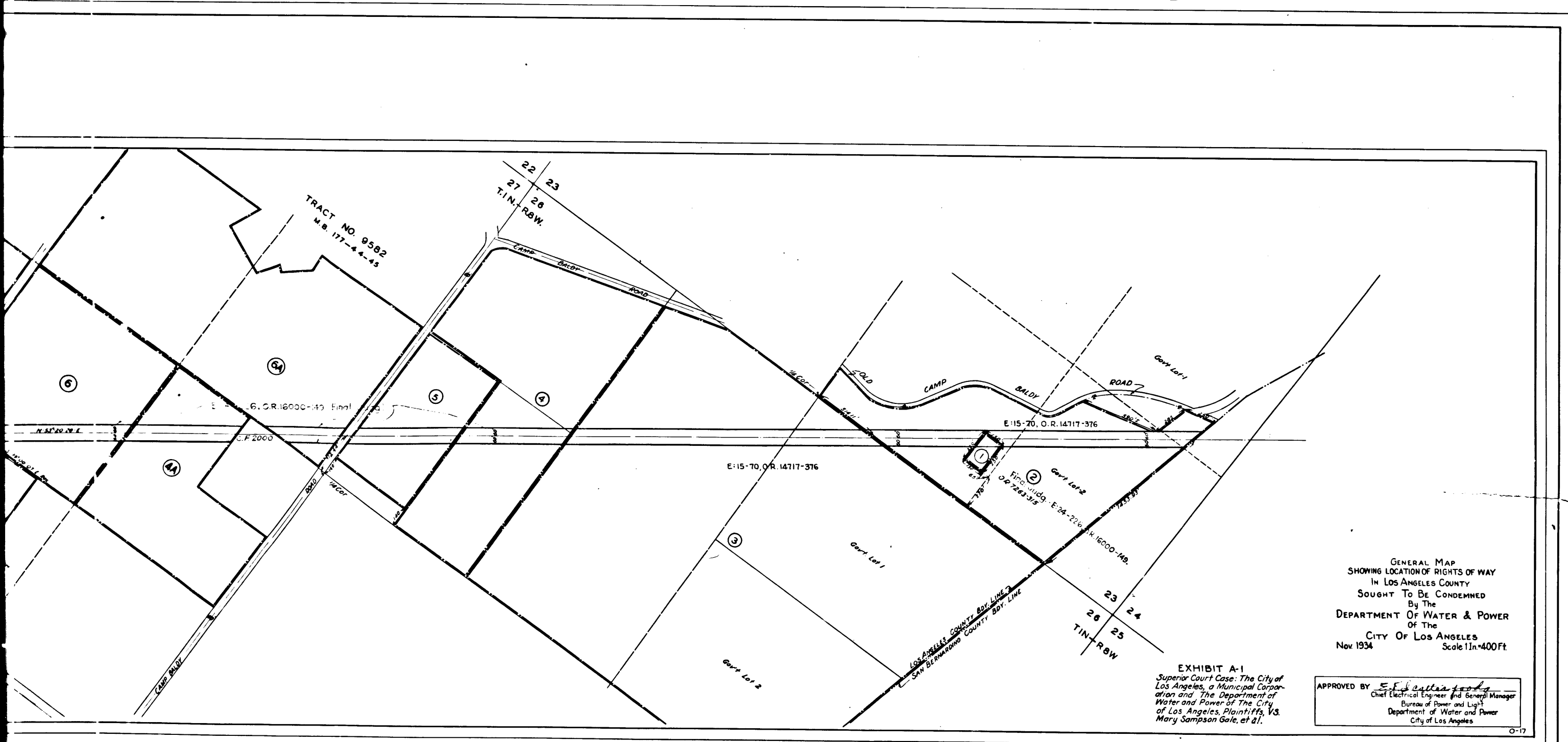


Scale 1 in = 400 FT	Date	CONDEMNATION-EXHIBIT A-3, GALE SUIT AMELIA AVE - SAN DIMAS CANYON ROAD BOULDER DAM TRANSMISSION LINE	DRAWING NUMBER 0-19
Drawn G.F.S.	11/21-34		
Traced G.F.S.	11/21-34		
Checked			
DESIGN ENGINEER		BUREAU OF POWER AND LIGHT DEPARTMENT OF WATER & POWER CITY OF LOS ANGELES	



Scale 1" = 400'	Date	CONDEMNATION-EXHIBIT A-1, GALE SUIT MILLS AVE - LOS ANGELES COUNTY LINE BOULDER DAM TRANSMISSION LINE	DRAWING NUMBER 0-17
Drawn J.H.H.	11/21-34		
Traced J.H.H.	11/22-34		
Checked			
DESIGN ENGINEER		BUREAU OF POWER AND LIGHT DEPARTMENT OF WATER & POWER CITY OF LOS ANGELES	

Superior Court Case No. 383542
 Suit for Condemnation
 Filed Feb. 13, 1935
 City of Los Angeles, Plaintiff
 vs
 Mary Sampson Gale, et al., Def.

Order authorizing P&L to take immediate possession of parcels 1 to 3, 4A, 5, 6, 7, 8, 9, 10, 11, 12, 13, 14, 15, 16, 17, 18, 19, 20, 21, 22, 23, 24, 25, 26, 27, 28, 29, 30, 31, 32, 33, 34, 35, 36, 37, 38, 39, 40, 41, 42, 43, 44, 45, 46, 47, rendered Oct. 9, 1935.

Interlocutory judgment as to parcels 1, 4, 4A, 5, 6, 6A, 11, 17, 18, 20, 21, 26, 27, 30, and 41, rendered June 3, 1938. J.B. 1016-27.

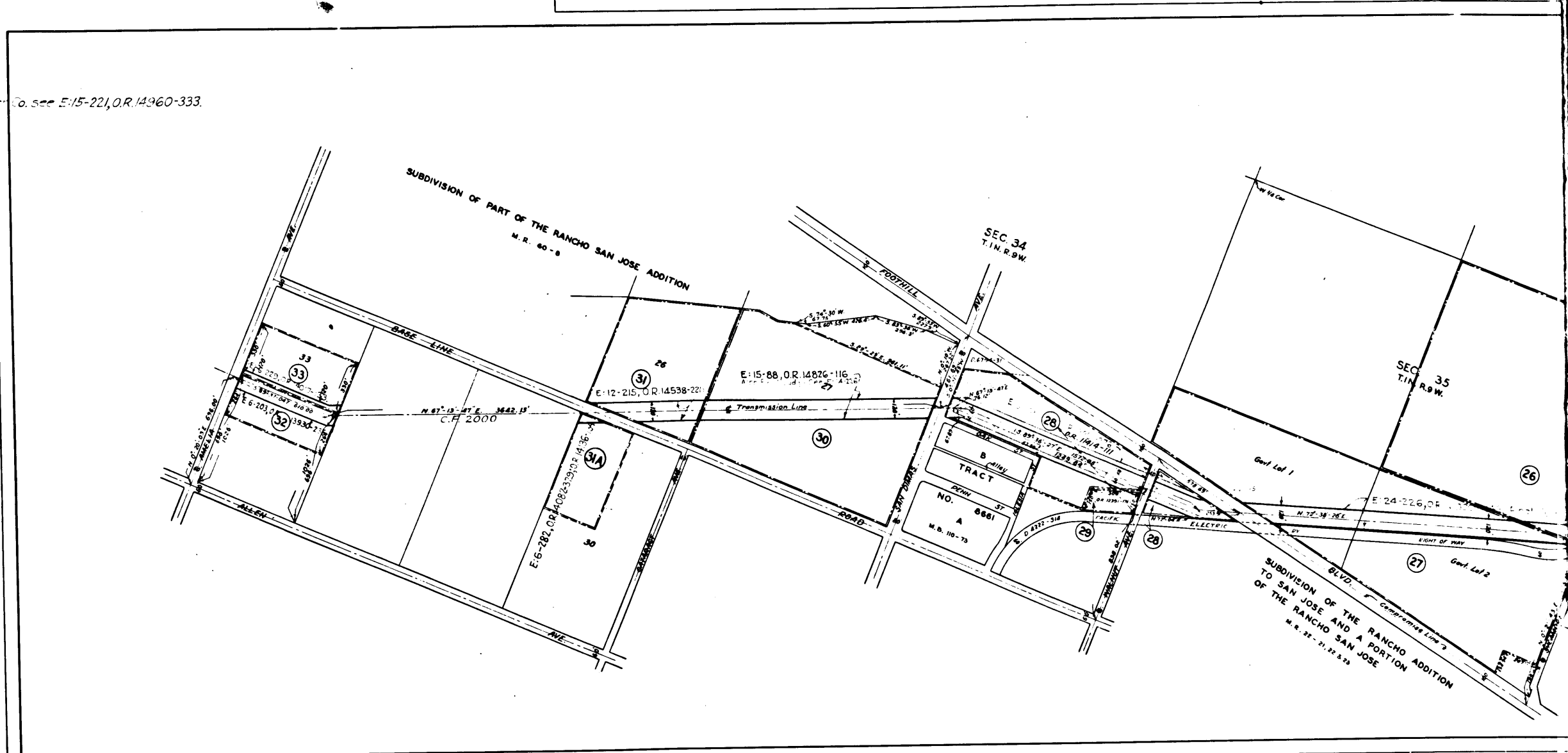
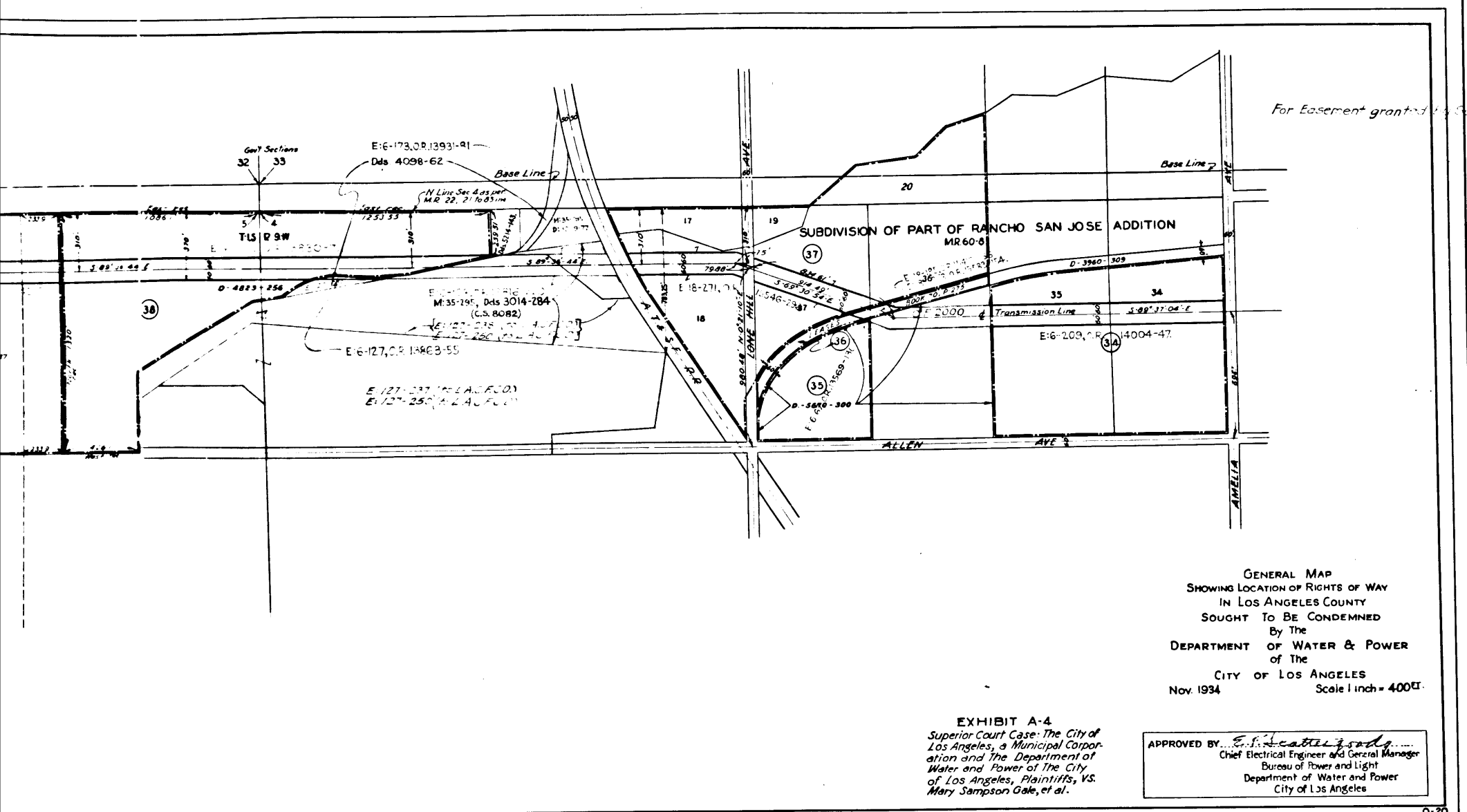
Final judgment in favor of P&L as to parcels 1, 2, 4A, 5, 6, 6A, 11, 17, 19, 20, 21, 26, 27, 30, and 41, rendered August 15, 1938.

E-24-226, O.R. 16000-149.

Case dismissed and I.R. deposits released as to parcels 2, 3, 7, 8, 9, 15, 18, 22, 23, 24, 31, 31A, 32, 33, 34, 37, 39, 42, 45, 46 Jun. 5, 1936 & Sep. 14, 1938.

Case dismissed and I.R. deposits released as to parcels 36 & 47 July 23-1943.

C.F. 2001-



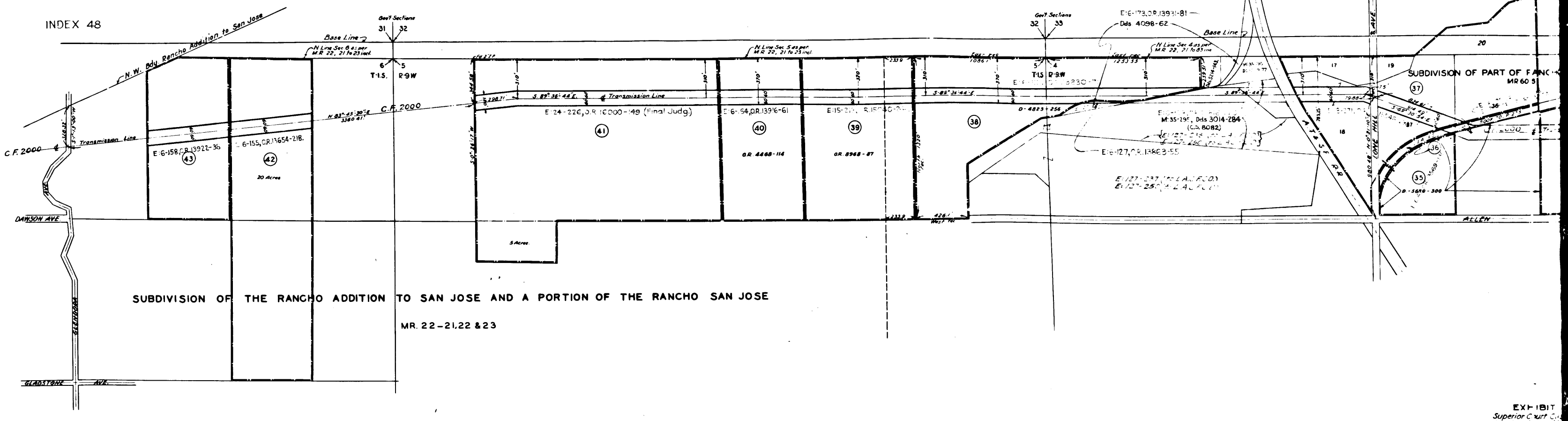
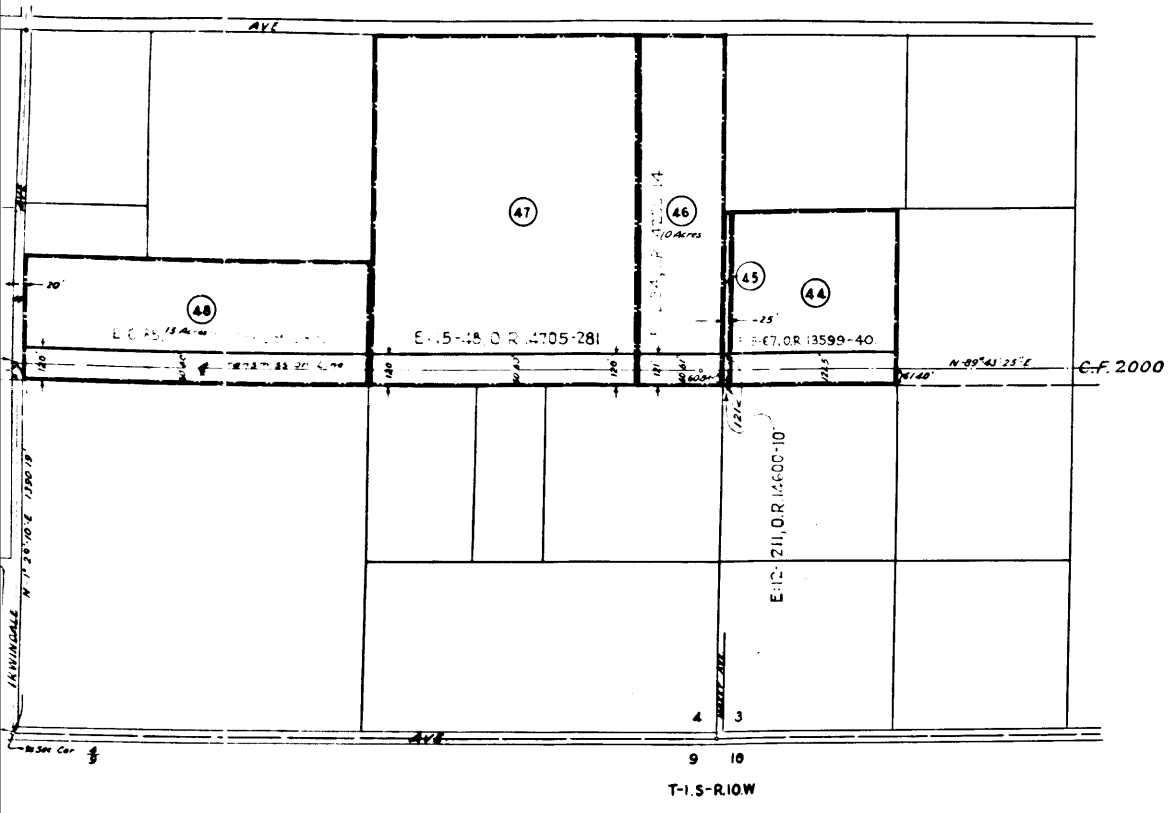
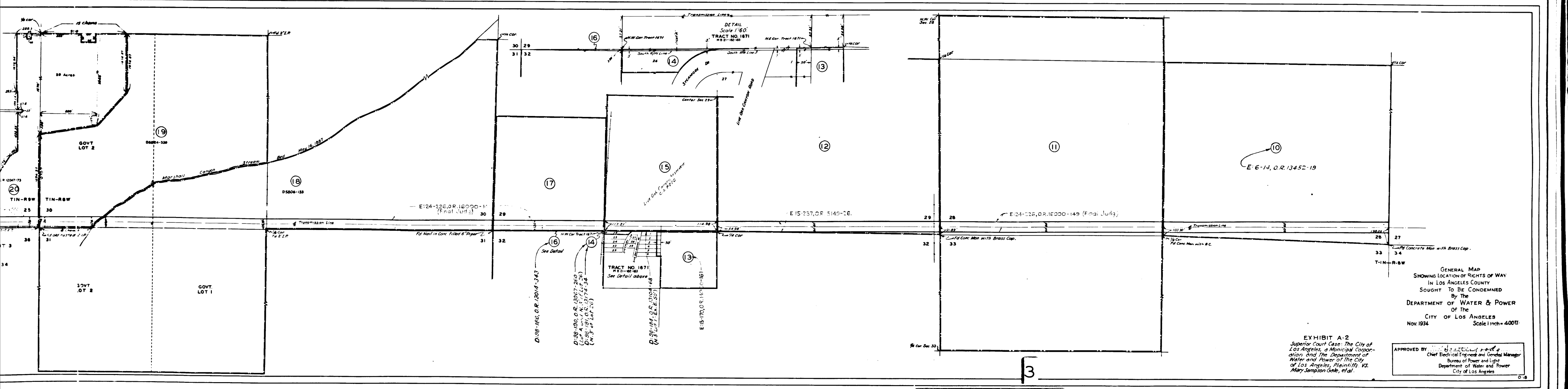


EXHIBIT
Superior Court Case
103 Angeles, a Municipal Corporation
and The City of Los Angeles, Plaintiffs
vs.
Mary Sampson Gale, et al.

Scale	1" = 400'	Date	
Drawn	UHF	11/14/34	
Traced	UHF	11/18/34	
Checked			
ELECTRICAL ENGINEER - DESIGN & CONSTRUCTION			
ELECTRICAL ENGINEER - OPERATION			
CHIEF ELECTRICAL ENGINEER			



GENERAL MAP
SHOWING LOCATION OF RIGHTS OF WAY
IN LOS ANGELES COUNTY
SOUGHT TO BE CONDEMNED
BY THE
DEPARTMENT OF WATER & POWER
OF THE
CITY OF LOS ANGELES
Nov. 1934 Scale 1 inch = 400 feet

EXHIBIT A-2
Superior Court Case: The City of
Los Angeles, a Municipal Corporation
and The Department of
Water and Power of The City
of Los Angeles, Plaintiffs, vs.
Mary Sampson Gale, et al.

APPROVED BY: [Signature]
Chief Electrical Engineer and General Manager
Bureau of Power and Light
Department of Water and Power
City of Los Angeles

C.F. 2001-

Scale	1" = 400'	Date	
Drawn	UHF	11/20/34	
Traced	UHF	11/21/34	
Checked			
ELECTRICAL ENGINEER - DESIGN & CONSTRUCTION			
ELECTRICAL ENGINEER - OPERATION			
CHIEF ELECTRICAL ENGINEER			

CONDEMNATION - EXHIBIT A-2, GALE SUIT
SAN DIMAS CANYON ROAD - MILLS AVE.
BOULDER DAM TRANSMISSION LINE
BUREAU OF POWER AND LIGHT
DEPARTMENT OF WATER AND POWER - CITY OF LOS ANGELES
DRAWING NUMBER
0-18

