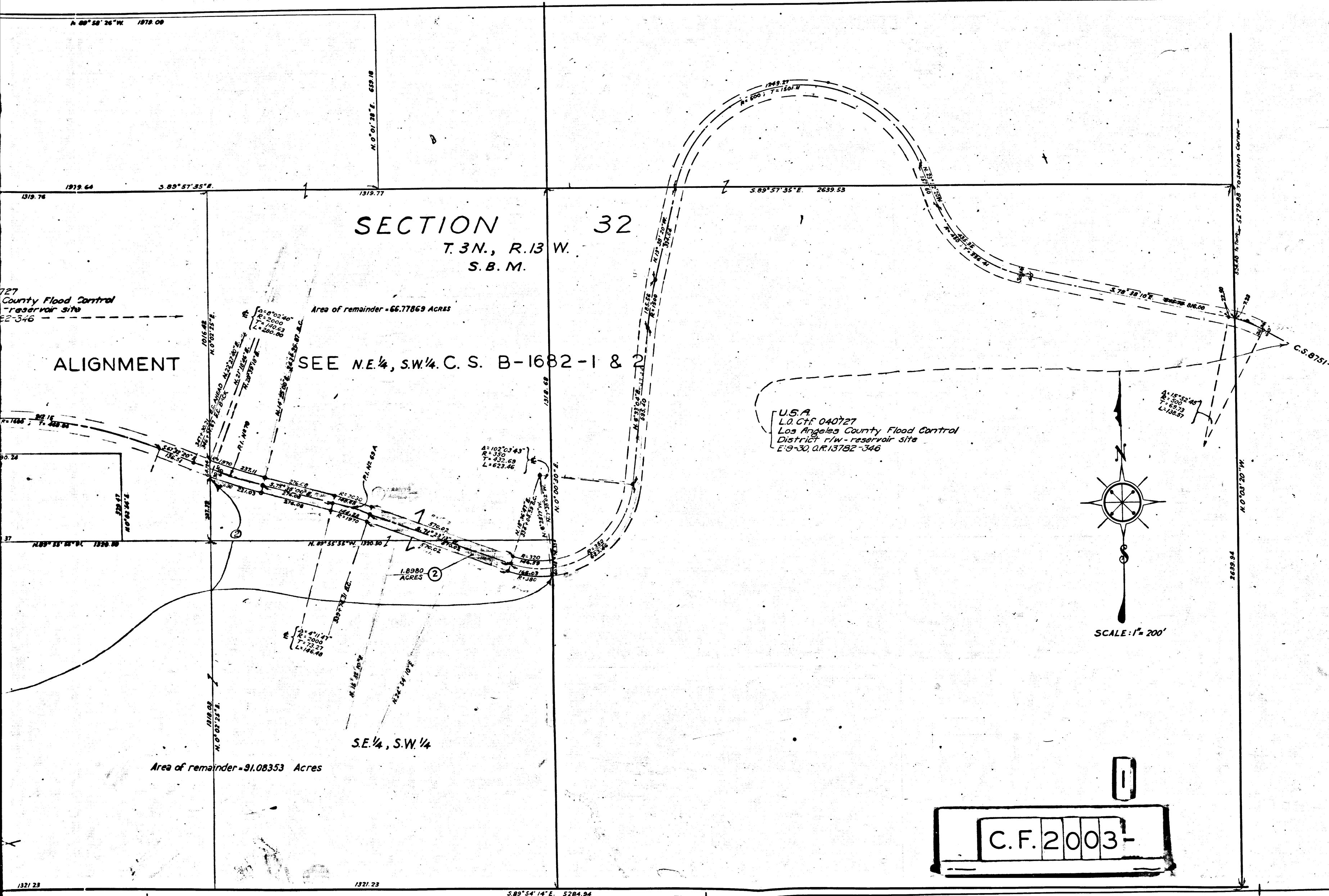


JIT-16
A-171



INDEX 16
 Superior Court Case No. 389088
 Suit for Condemnation
 Filed June 14, 1935
 County of Los Angeles, Pltff.
 vs
 Ralph L. Bryant, et al, Def.
 Order authorizing Pltff. to take
 immediate possession, rendered
 July 12, 1935.
 Stipulation authorizing dismissal,
 filed Mar. 17, 1936.

EXHIBIT "A"
 MAP SHOWING PROPERTY TO BE ACQUIRED
 FOR THE OPENING
 OF
BIG TUJUNGA CANYON ROAD
 IN ACCORDANCE WITH A RESOLUTION OF THE BOARD
 OF SUPERVISORS OF LOS ANGELES COUNTY ADOPTED
 ON
 SCALE: 1" = 200' FEBRUARY 1935
 ALFRED JONES - COUNTY SURVEYOR

LEGEND
 NUMBERS IN CIRCLES INDICATE PARCELS SOUGHT TO BE CONDEMNED
 THE PARCELS ARE DESCRIBED IN PARAGRAPH OF THE COMPLAINT
 PORTION COLORED RED SHOWS LAND IN WHICH AN EASEMENT FOR
 PUBLIC HIGHWAY PURPOSES IS SOUGHT TO BE ACQUIRED.

C.F. 2003-

DRAWN BY	DATE	CALCULATED BY	DATE	CHECKED BY	DATE
R. G. LUNT	AUG. 1934	R. G. LUNT	AUG. 1934	G. G. BLACKMER	AUG. 1934

INDEX MAP NO. 16, (C4)
 CO. SURV. S. 6TH REP. 219 D 201
 ASSESSORS' BK. NO. 171 & 175
 N. BOOK 13 PAGES

SUPERVISORIAL DISTRICT NO. 5
 RD. NO. 502
 C.S. MAP NO. 8751-1
 ROAD DEPT. N.W. MAP (N.D. 6228)

LOCATION: SEC. 31 & 32 T.3N., R.13W.
 CROSS REFERENCES: Big Tujunga Canyon Road (1)
 C.S. FILE: BIG TUJUNGA CANYON ROAD, COND. (1)

SECTION 31
T. 3 N., R. 13 W.
S. B. M.

SECTION 32
T. 3 N., R. 13 W.
S. B. M.

U.S.A.
L.O. ctf 040727
Los Angeles County Flood Control
District r/w - reservoir site
E: 9-30, O.R. 13782-346

Area of remainder - 66.77869 Acres

SEE N.E. 1/4, S.W. 1/4 C. S. B-1682-1 & 2

FOR LATER ALIGNMENT

D.O.R. 3356-224
D.O.R. 6336-56
Emil Kirchner
Wilhelmina Kirchner
O.R. 471-178
M. Hartmann
S.C. 304265
Ralph L. Bryant
Zula M. Bryant
E: 11-16, O.R. 1415-261

U.S.A.
L.O. ctf 040727
Los Angeles County Flood Control
District r/w - reservoir site
E: 9-30, O.R. 13782-346

Area of remainder - 91.08353 Acres

SE 1/4, SW 1/4

2
C.F. 2003-

1/4 SECTION CORNER 367.47 N. 89° 43' 40" W 2628.39 N. 89° 57' 49" E 1321.23 5284.94

6 5