

MISSION ROAD

ROAD

TRACT NO. 8892
LOT A
Maps, Book 117, Page 30

CITY LANDS OF LOS ANGELES

OMAHA HEIGHTS

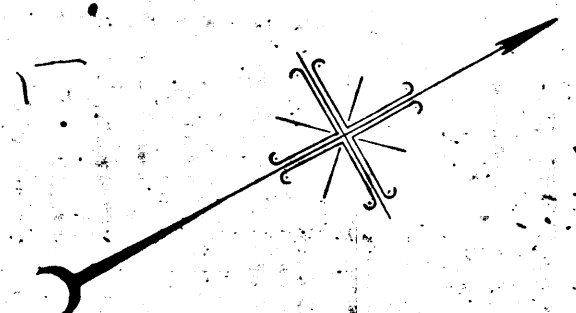
STREET

SOTO

ZOO TRACT
LOT 1A

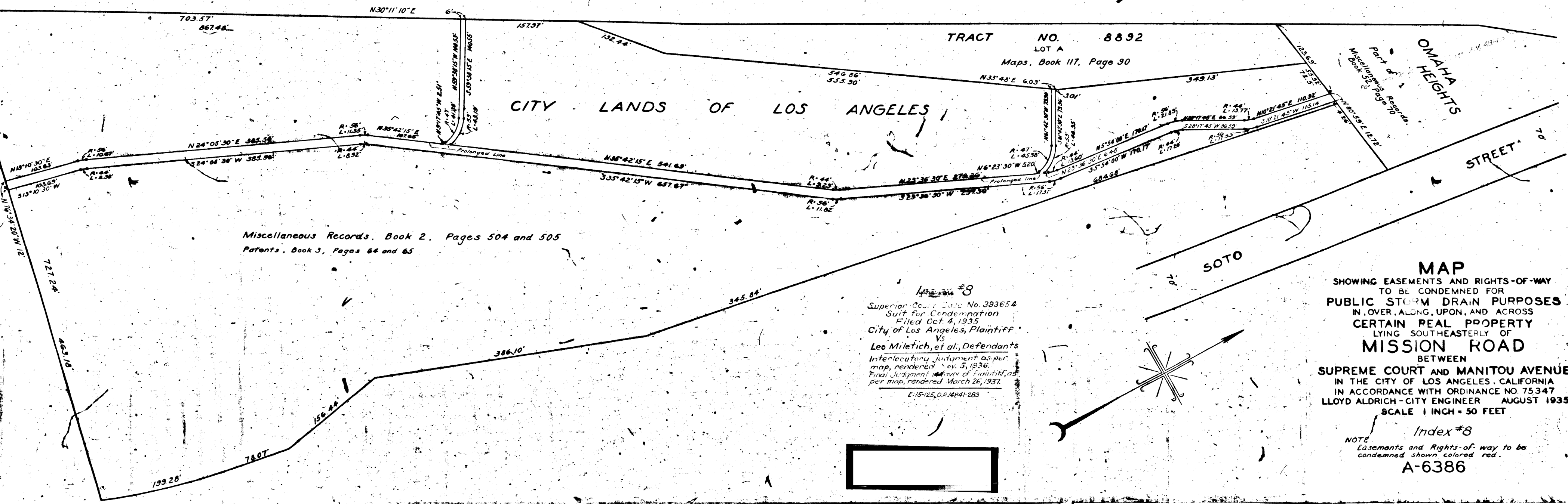
Miscellaneous Records, Book 2, Pages 504 and 505
Patents, Book 3, Pages 64 and 65

Index #8
Superior Court Case No. 383654
Suit for Condemnation
Filed Oct 4, 1935
City of Los Angeles, Plaintiff
Vs
Leo Mileich, et al, Defendants
Interlocutory judgment as per
map, rendered Nov. 5, 1936.
Final Judgment in favor of Plaintiff, as
per map, rendered March 26, 1937.
E:15125, O.P. 14941-283



MAP
SHOWING EASEMENTS AND RIGHTS-OF-WAY
TO BE CONDEMNED FOR
PUBLIC STORM DRAIN PURPOSES
IN, OVER, ALONG, UPON, AND ACROSS
CERTAIN REAL PROPERTY
LYING SOUTHEASTERLY OF
MISSION ROAD
BETWEEN
SUPREME COURT AND MANITOU AVENUE
IN THE CITY OF LOS ANGELES, CALIFORNIA
IN ACCORDANCE WITH ORDINANCE NO. 75347
LLOYD ALDRICH - CITY ENGINEER AUGUST 1935
SCALE 1 INCH = 50 FEET

Index #8
NOTE
Easements and Rights-of-way to be
condemned shown colored red.
A-6386



Maps, Book 30, Page 94

Index #8