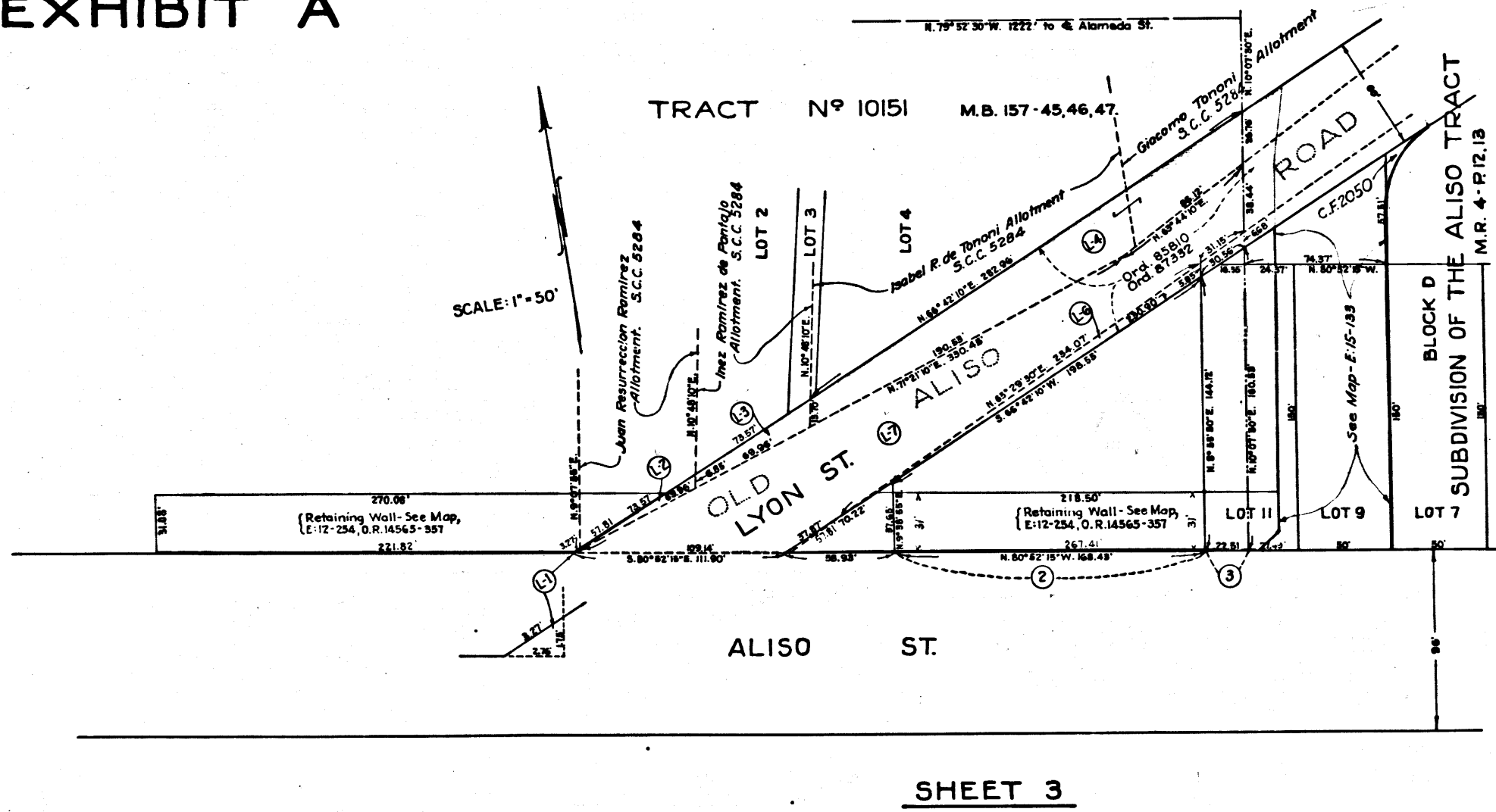
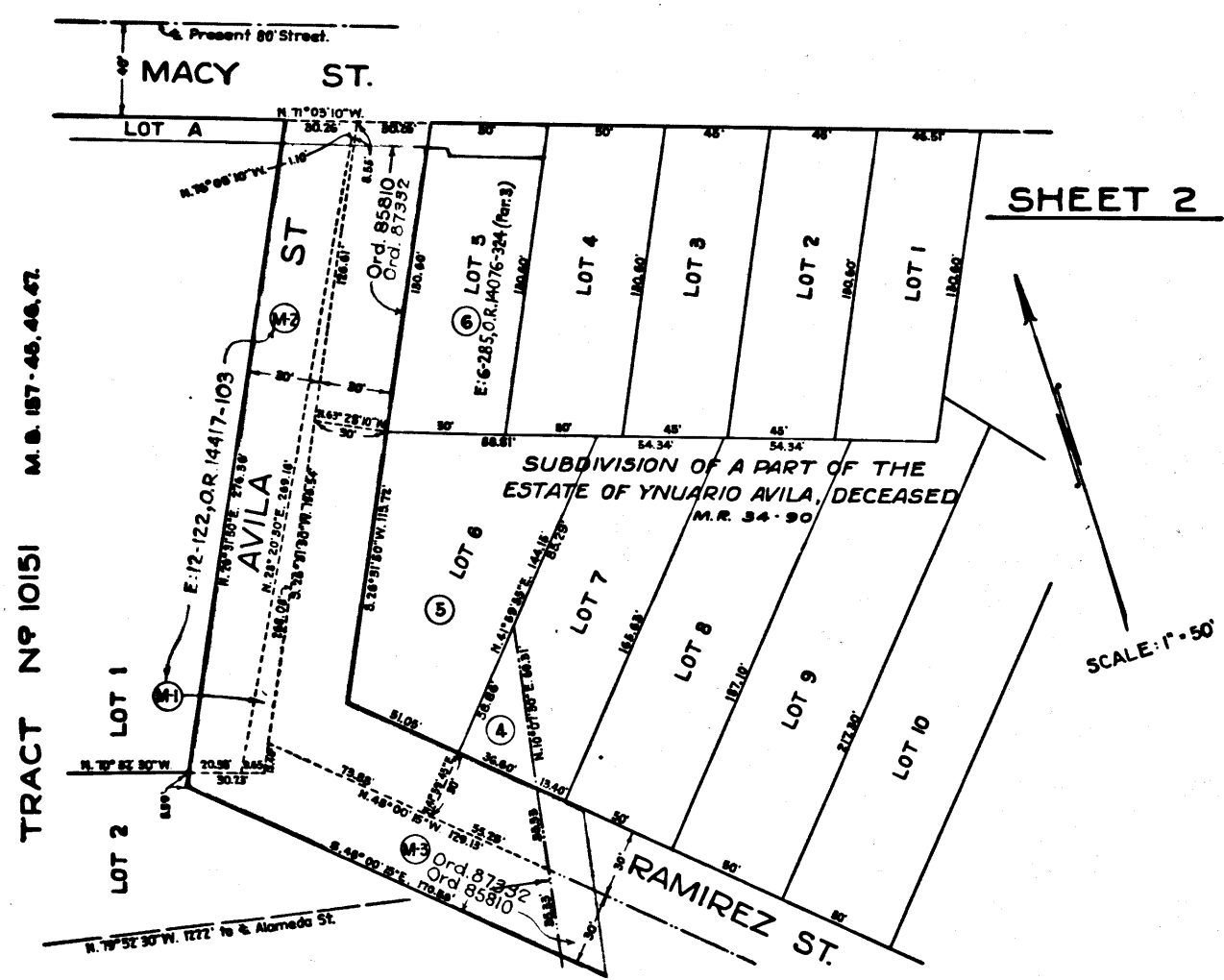


SHEET 1
EXHIBIT A



C.F. 2007-

INDEX 3
Superior Court Case No. 381132
Suit for Condemnation,
Filed Dec. 8th, 1934.
Atchison Topeka & Santa Fe Ry. Co. (33% interest),
Los Angeles & Salt Lake R.R. Co. (23% interest),
Southern Pacific Company (44% interest),
Vs.
City of Los Angeles et al, Defendant.
Final Judgment in favor of Plaintiffs as to Parcels
2, 3, 4, 6, 16, L-1, L-2, L-3, L-4, L-6, L-7, & M-3, rendered
August 27th, 1935.
E: 6-177, O.R. 13641-118.
Parcel 5 transferred to U.S. District Court on
Apr. 15, 1935 under District Court Case No.
EQ. 644-J.
Final judgment in favor of Plaintiff as to
Parcel 5, rendered Apr. 1, 1936.
E: 6-252, O.R. 14101-18
Final judgment in favor of Plaintiff, as to Parcels
M-1 & M-2, rendered September 10th, 1936.
E: 12-122, O.R. 14417-103