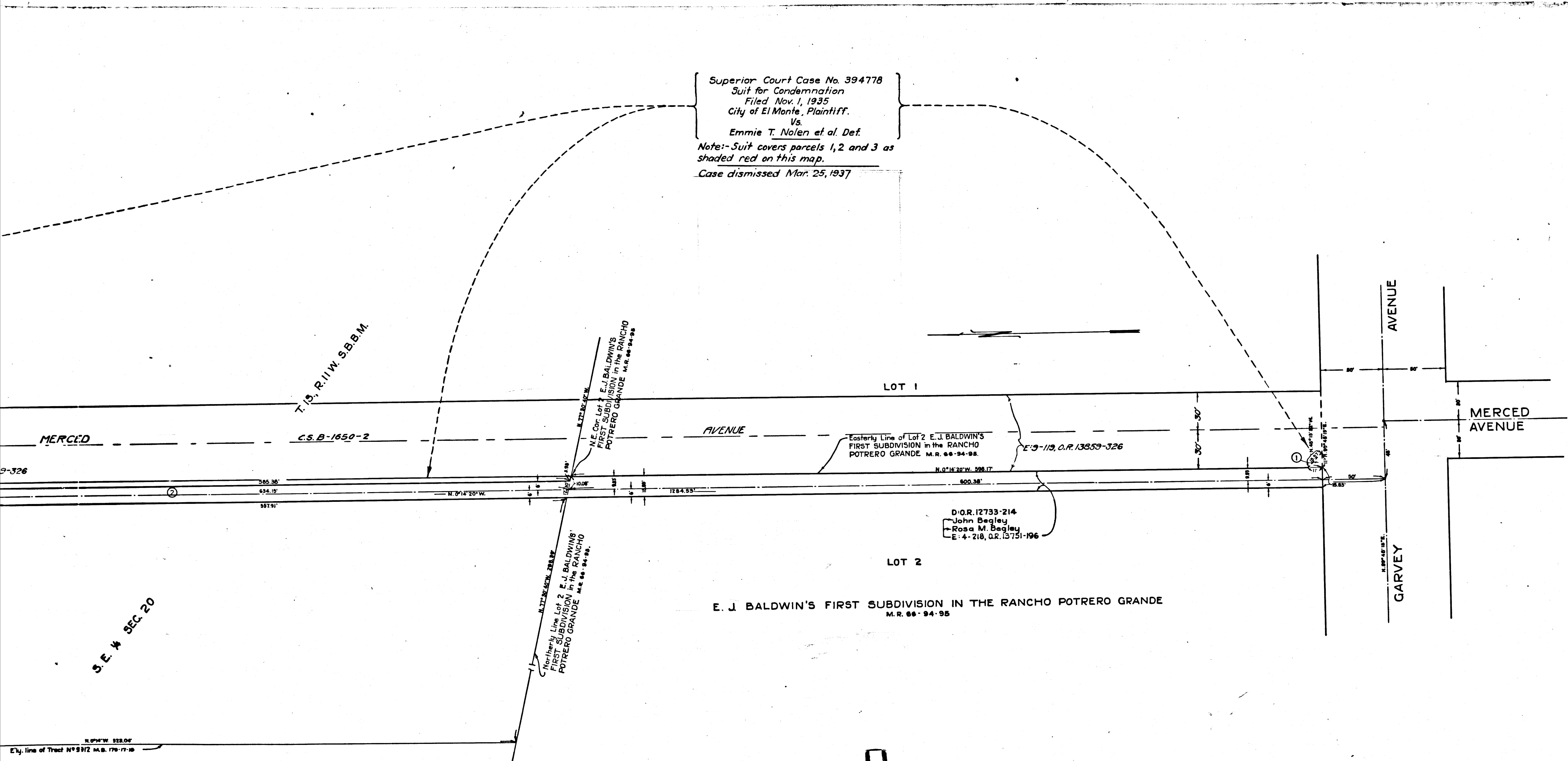


Superior Court Case No. 394778
 Suit for Condemnation
 Filed Nov. 1, 1935
 City of El Monte, Plaintiff.
 Vs.
 Emmie T. Nolen et al. Def.
 Note:- Suit covers parcels 1, 2 and 3 as
 shaded red on this map.
 Case dismissed Mar. 25, 1937



E. J. BALDWIN'S FIRST SUBDIVISION IN THE RANCHO POTRERO GRANDE
 M.R. 66-94-95

D.O.R. 12733-214
 John Begley
 Rosa M. Begley
 E. 4-218, O.R. 13751-196

C.F. 2008-

INDEX 37+44

MAP SHOWING
 EASEMENT FOR A STORM DRAIN
 FROM GARVEY AVE. TO THE RIO HONDO
 JULY 1935 SCALE: 1" = 40'
 City Engineer City of EL MONTE

Note:- This is not an exact copy of the map
 filed in this case. - Co. Sur.

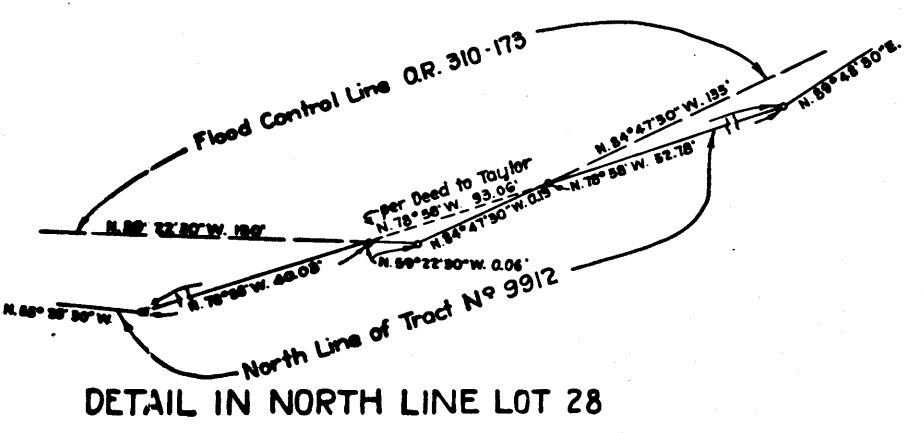
MERCED C.S. B-1650-2

T. 19, R. 11 W. S.B.M.

S.E. 4 SEC 20

9-326

N. 0° 14' 20" W. 929.04'
 E. ly. line of Tract N° 9312 M.B. 176-17-18



DETAIL IN NORTH LINE LOT 28

D:O.R. 4800-237
 Huntington Land and Improvement Co.
 D:O.R. 310-173
 L.A. Co. Flood Control Dist.
 E:4-213, O.R. 13783-107

D:O.R. 2218-358
 Emmie T. Nolen
 E:4-243, O.R. 13873-109

TRACT No 9912
 M.S. 178-17-18

MERCED

C.S. B-1650-2

E:9-119, O.R. 13859-326

S.E. 4 SEC. 20

North of the Lot 2
 FIRST SUBDIVISION
 POTRERO GRANDE

O.R. 11221-299
 S. Taylor
 O.R. 310-173
 A. Co. Flood Control Dist.
 4-243, O.R. 13725-401

LOT 29

LOT 28

No 9912

LOT 27

LOT 26

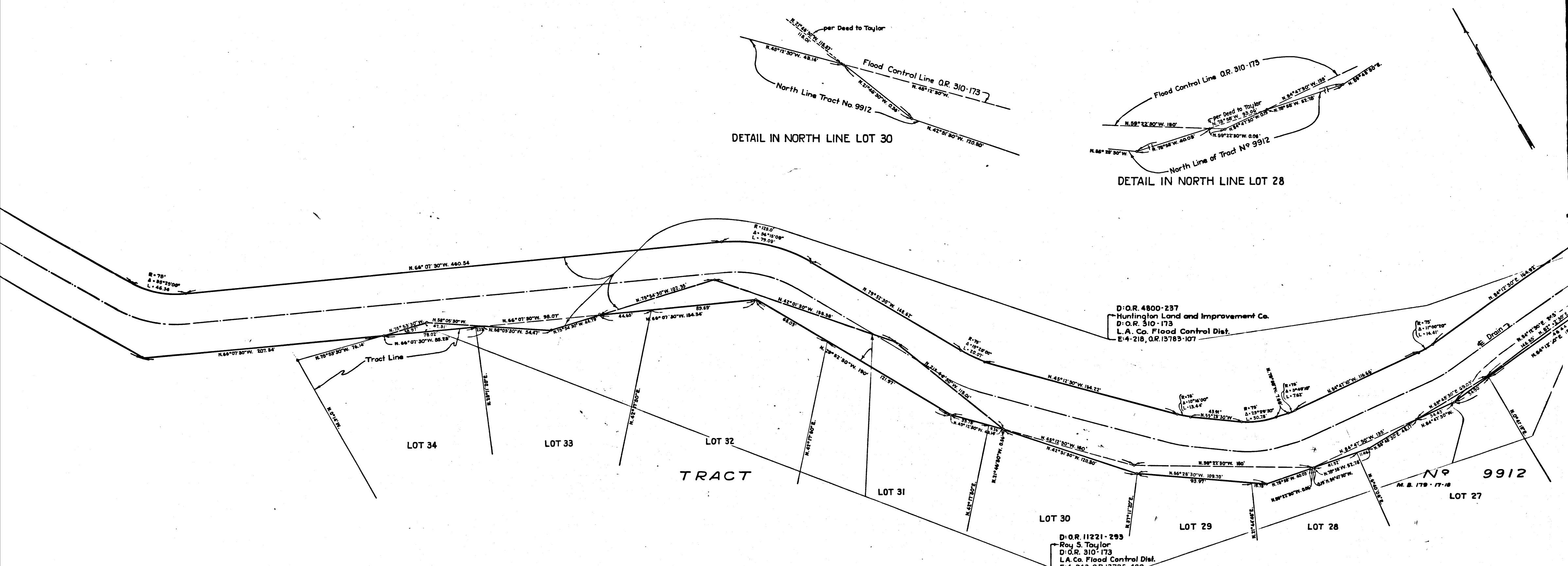
E'ly. line of Tract No 9912 M.S. 178-17-18

2

C.F. 2008-

DETAIL IN NORTH LINE LOT 30

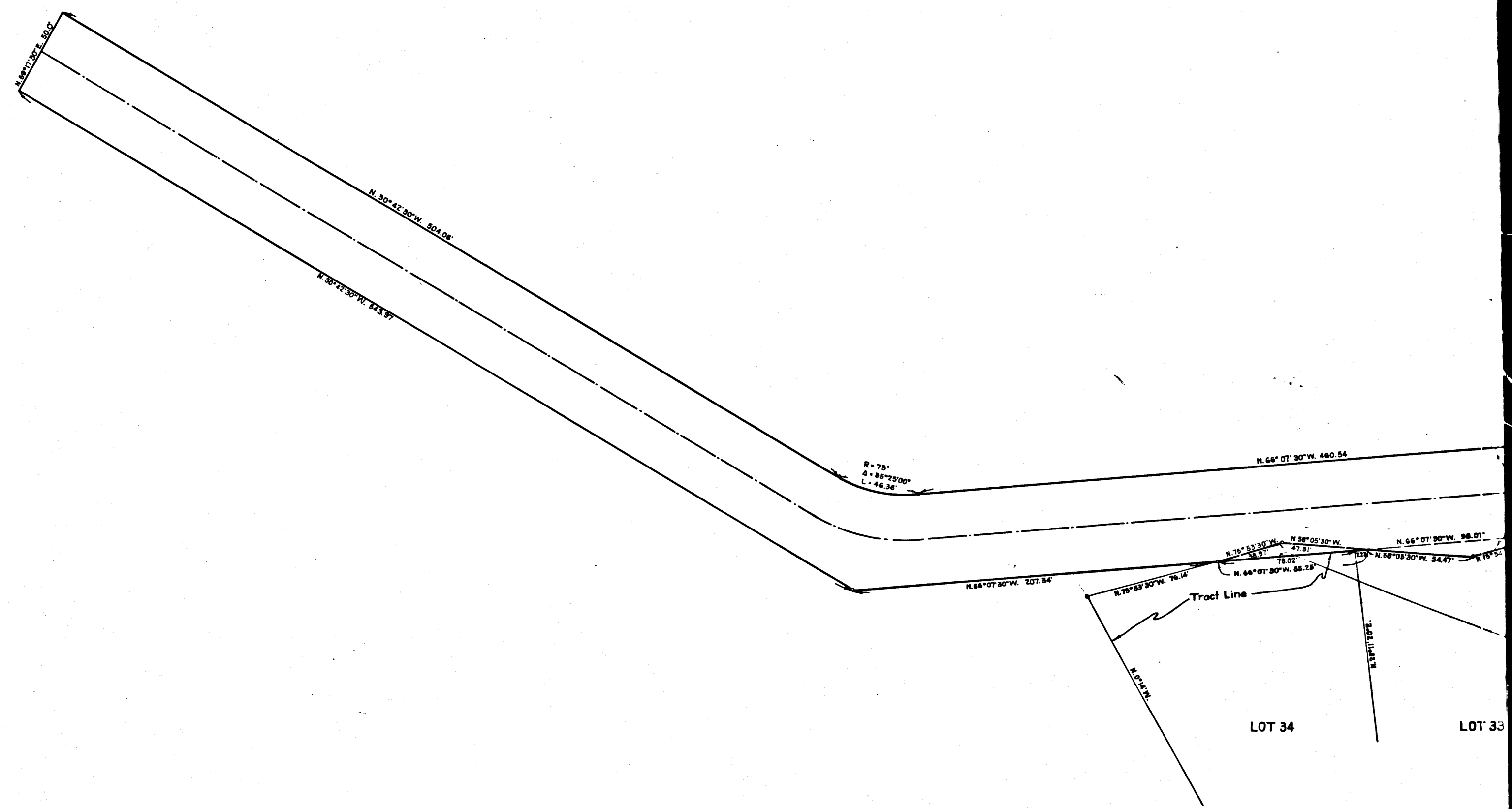
DETAIL IN NORTH LINE LOT 28



3

C.F. 2008-

87142E ON 22AD TIANO SOUTHWEST
10TH
957
MEMCO
50TH



4

C.F. 2008-