

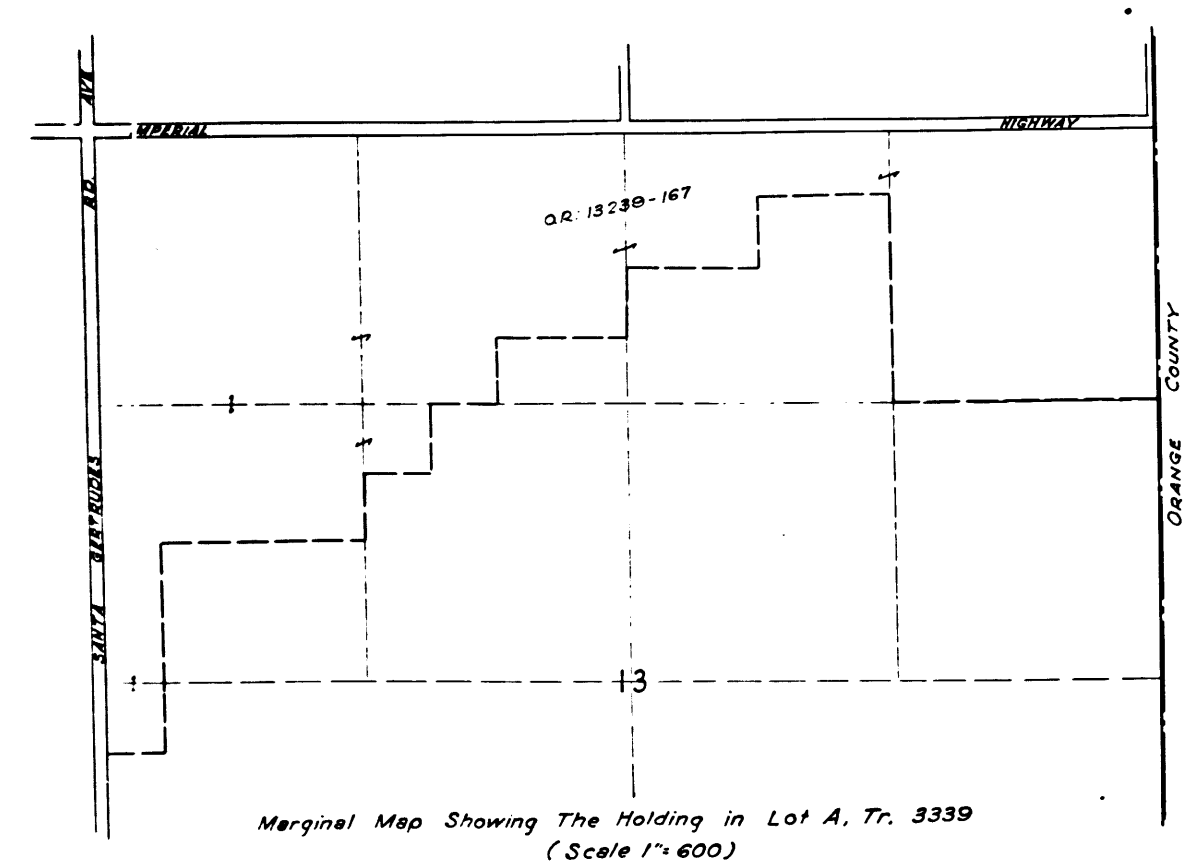
EXHIBIT
MAP SHOWING PROPERTY TO BE ACQUIRED
FOR THE OPENING AND WIDENING OF
IMPERIAL HIGHWAY
 IN ACCORDANCE WITH A RESOLUTION OF THE BOARD
 OF SUPERVISORS OF LOS ANGELES COUNTY ADOPTED
 ON DECEMBER 2, 1935.

SCALE: 1"=100' Nov. 1935
ALFRED JONES — COUNTY SURVEYOR

LEGEND

NUMBERS IN CIRCLES INDICATE PARCELS SOUGHT TO BE CONDEMNED. THE PARCELS ARE DESCRIBED IN PARAGRAPH IV OF THE COMPLAINT. PORTION COLORED RED SHOWS LAND IN WHICH AN EASEMENT FOR PUBLIC HIGHWAY PURPOSES IS SOUGHT TO BE ACQUIRED. PORTION COLORED YELLOW SHOWS LOCATION OF NECESSARY EASEMENTS SOUGHT TO BE ACQUIRED OTHER THAN FOR HIGHWAY PURPOSES.

Superior Court Case No. 396398
Suit for Condemnation
Filed Dec. 17, 1935
County of Los Angeles, Pltff.
vs.
Charles S. Alexander, et al., Def.
Order authorizing Pltff. to take
Immediate possession, rendered
Jan. 13, 1936.



LOS ANGELES COUNTY
 3018-2614
 ORANGE COUNTY

C.F. 2011 -

DRAWN BY	DATE	CHECKED BY	DATE
C.H. Hughes	11-22-35	[Signature]	11-25-35
INDEX MAP NO.	38 (C.S.)	SUPERVISORIAL DIST. NO.	1
ASSESSOR'S BOOK NO.	152, 355, 228	RD. NO.	108
H. BOOK	55	C.S. MAP NO.	2-2(18-7)
LOCATION	S.E. of Whittier		
CROSS REFERENCES:	C.S. FILE: IMPERIAL HIGHWAY COND. (1)		

INDEX 34
 Negative of this map filed
 in the Proj. Dept. as Neg.
 No. 239.

TRACT

NO

2

3

4

M. B. 102-57-58

FIRST AVE.

OR 11904-363

E16-66, O.R. 14817-34

E16-68, O.R. 1727-37

E 6-66, O.R. 14817-34

O.R. 2911-76

Reservoir & Drip (Earth Drip)

38 26.06
34.71

Earth Reservoir (E Drip)

5-3" Burn

8-2" Apples

1-1 Story Frame House

Mr. Moser

1-1 Frame Shed

1-1 Frame Chicken House

2-8 Apples

1-1 Frame Barn

1-1 Fence

1-1 Willow

Orange

Grove

Old Frame Shanty

1-1 Chicken House

1-1 Chicken House

1-1 Chicken House

1-1 Chicken House

1-1 Chicken House

1-1 Chicken House

1-1 Chicken House

1-1 Chicken House

1-1 Chicken House

3448
34.71

1045
34.71

49
34.71

50
34.71

51
34.71

54
34.71

7048
34.71

2660.79

N 89° 44' 06" E

N 55° 5' 6"

2728.89

HIGHWAY

2728.89

N 1° 55' 29" E

Row of Conc. In. Valves

33 53.5
34.71

590

Row of Conc. In. Valves

Row of Conc. In. Valves

Row of Conc. In. Valves

Row of Conc. In. Valves

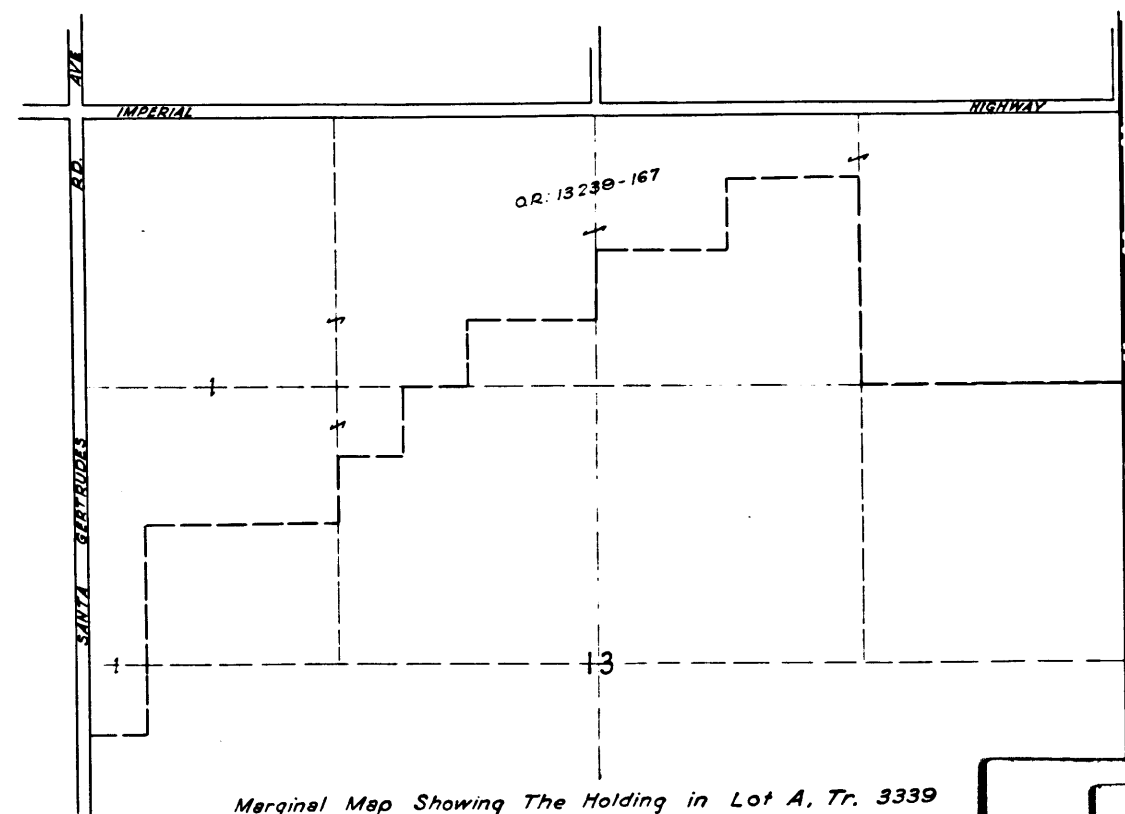
TRACT

LOT A

NO

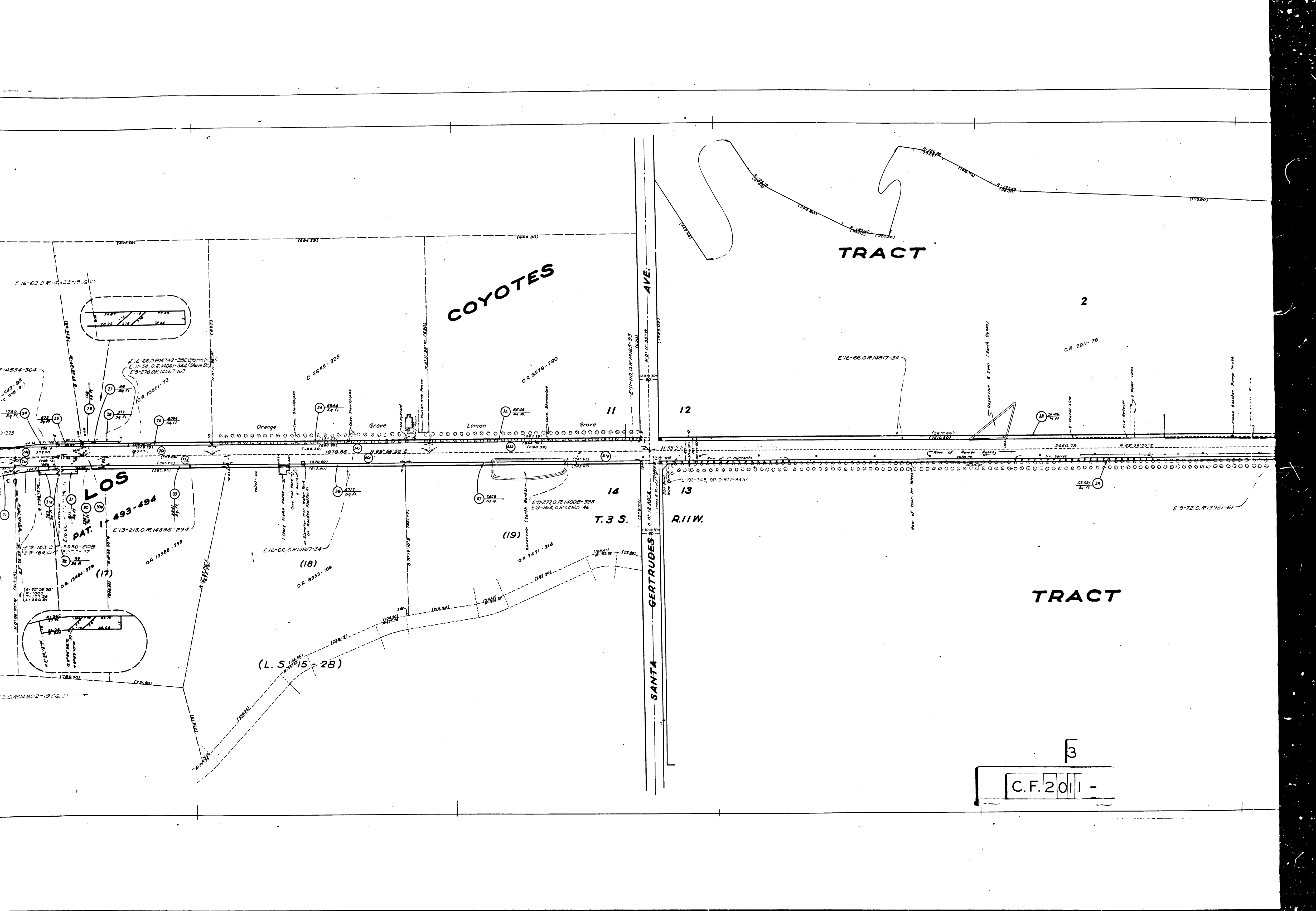
M. B. 36-74

3339



Marginal Map Showing The Holding in Lot A, Tr. 3339 (Scale 1"=600)

C.F. 2011 -



COYOTES

TRACT

2

AVE.

11

12

14

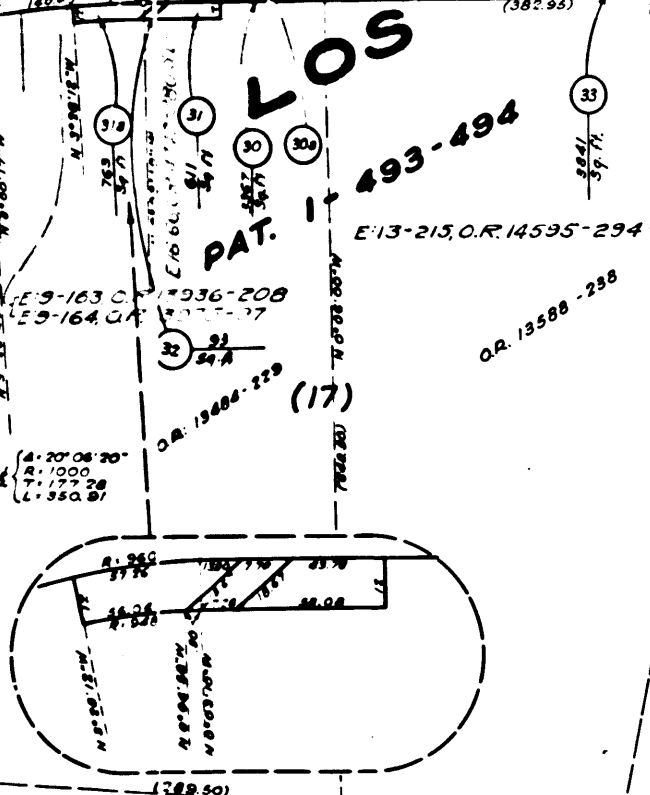
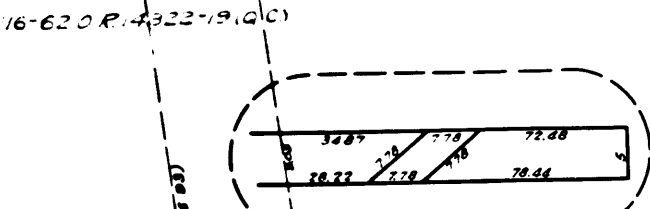
13

T.3 S.

R.11 W.

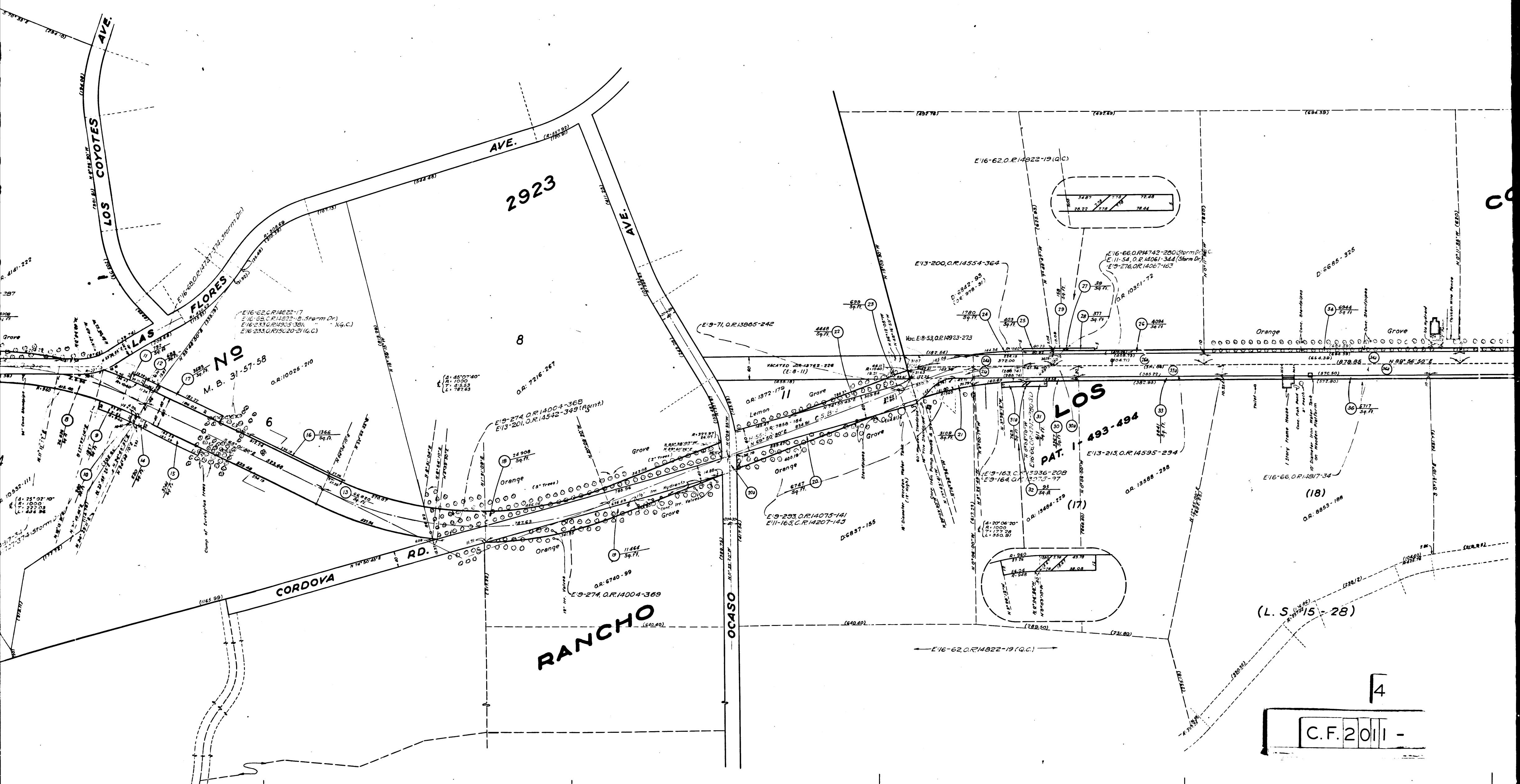
SANTA GERTRUDES

TRACT



(L.S. 15-28)

3
C.F. 2011 -



2923

NO

LOS

RANCHO

(L.S. 15-28)

C.F. 2011 -

4

SUPERIOR COURT CASE NO. 396398
CLERKS FILED MAP NO. 2011

SUPERIOR COURT CASE NO. 396398
CLERKS FILED MAP NO. 2011

