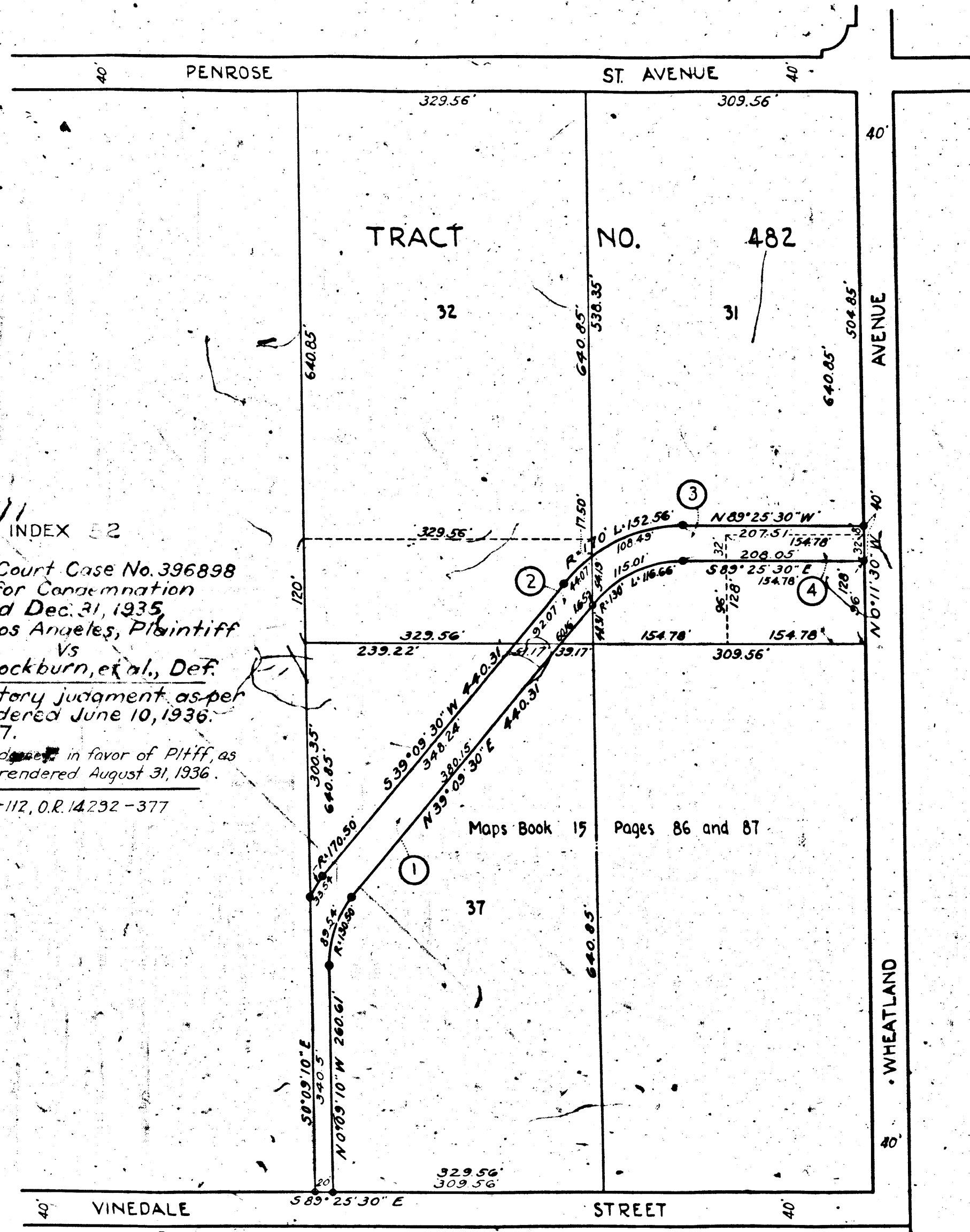


A-6394

A-6394



INDEX 2

Superior Court Case No. 396898
 Suit for Condemnation
 Filed Dec. 31, 1935
 City of Los Angeles, Plaintiff
 vs
 Robert Cockburn, et al., Def.
 Interlocutory judgment, as per
 map, rendered June 10, 1936.
 J.B. 945-7.
 Final judgment in favor of Plaintiff, as
 per map, rendered August 31, 1936.
 E. 12-112, O.R. 14292-377

Maps Book 15 Pages 86 and 87

La Tuna Canyon Wash bet. Wheatland Ave. and Vinedale St.
 Charge No. 48329
 Clerk's File No. 2083-34

MAP
 SHOWING EASEMENTS AND RIGHTS-OF-WAY
 TO BE CONDEMNED FOR
 PUBLIC FLOOD CONTROL PURPOSES
 FOR OPENING, WIDENING, EXTENDING AND DEEPENING
 THE CHANNEL OF
 LA TUNA CANYON WASH
 BETWEEN A POINT IN
 WHEATLAND AVENUE
 APPROXIMATELY SEVEN HUNDRED FIFTY-SIX (756) FEET
 NORTHERLY OF VINEDALE STREET
 AND A POINT IN
 VINEDALE STREET
 APPROXIMATELY SIX HUNDRED NINETEEN (619) FEET
 WESTERLY OF WHEATLAND AVENUE
 IN THE CITY OF LOS ANGELES CALIF.
 IN ACCORDANCE WITH ORDINANCE NO. 75859
 LLOYD ALDRICH CITY ENGINEER DECEMBER 1935
 SCALE 1 INCH = 100 FEET

Notes:-
 Easements and Rights-of-Way to be condemned shown colored red.
 Dotted lines and dimensions show properly holdings in those cases
 where they differ from recorded subdivisions.
 Figures in circles indicate the parcels as set forth in paragraph IX
 of the complaint.

A-6394

A-6394

A-6394