

Sht-29
A-315

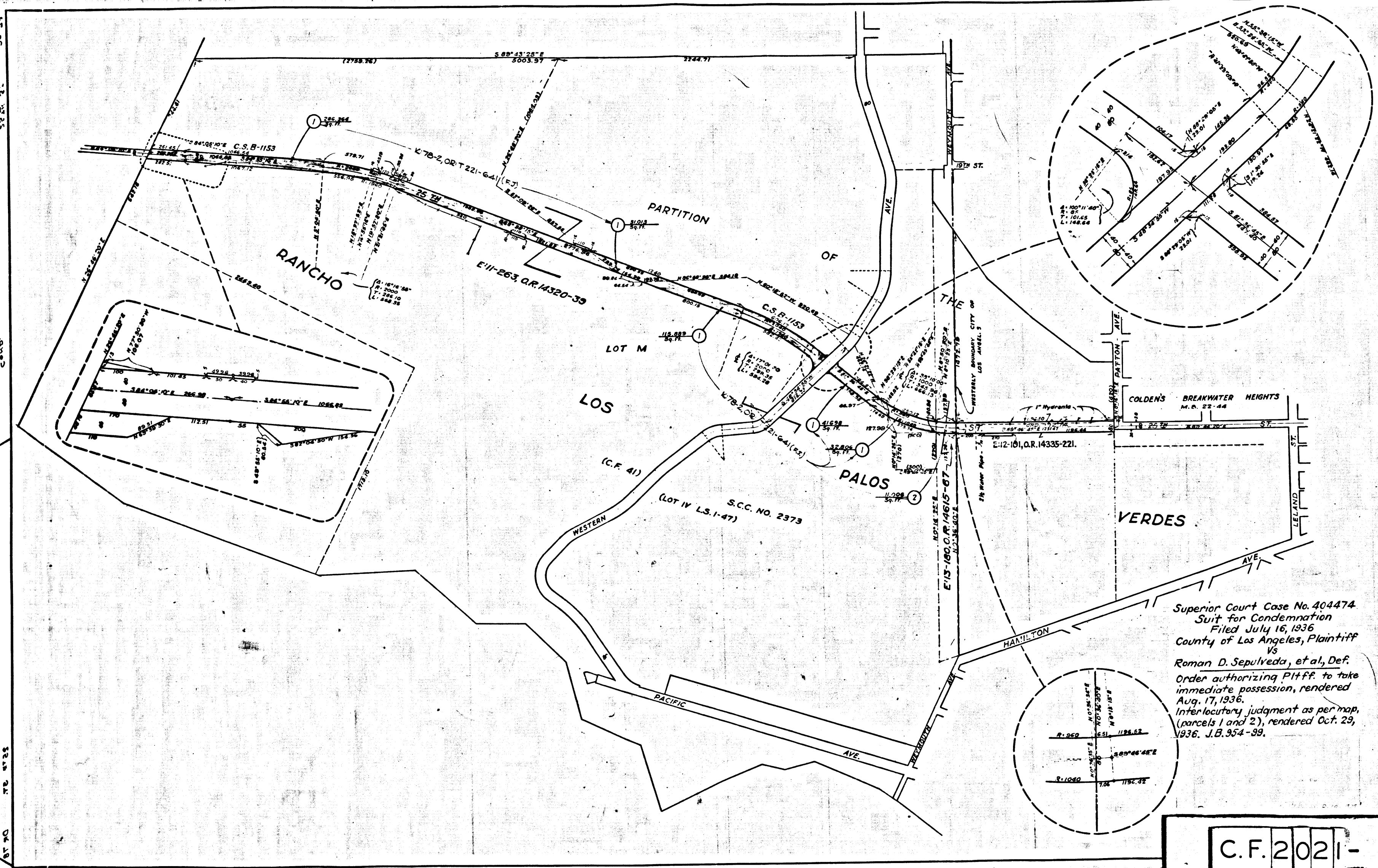


EXHIBIT 'A'
MAP SHOWING PROPERTY TO BE ACQUIRED
FOR THE OPENING OF
25TH STREET
IN ACCORDANCE WITH A RESOLUTION OF THE BOARD
OF SUPERVISORS OF LOS ANGELES COUNTY ADOPTED
ON
SCALE: 1"=400' APRIL 1936
ALFRED JONES COUNTY SURVEYOR

LEGEND
NUMBERS IN CIRCLES INDICATE PARCELS SOUGHT TO BE CONDEMNED.
THE PARCELS ARE DESCRIBED IN PARAGRAPH OF THE COMPLAINT.
PORTION COLORED RED SHOWS LAND IN WHICH AN EASEMENT FOR
PUBLIC HIGHWAY PURPOSES IS SOUGHT TO BE ACQUIRED. PORTION
COLORED YELLOW SHOWS LOCATION OF NECESSARY CUT AND FILL
EASEMENTS SOUGHT TO BE ACQUIRED.

Superior Court Case No. 404474
Suit for Condemnation
Filed July 16, 1936
County of Los Angeles, Plaintiff
Vs
Roman D. Sepulveda, et al, Def.
Order authorizing Pltff. to take
immediate possession, rendered
Aug. 17, 1936.
Interlocutory judgment as per map,
(parcels 1 and 2), rendered Oct. 29,
1936. J.B. 954-89.

INDEX 29

Negative of this map filed in Blue Print Dept.
as Negative No. 250.

DRAWN BY	DATE	CHECKED BY	DATE	REVISED
Hughes	4-18-36	[Signature]	4-15-36	7-21-36

INDEX MAP NO. 29 (A83)	SUPERVISORIAL DIST. NO. 4
CO SURV'S	RD. NO. 40 B
ASSESSOR'S BOOK NO. 815-647	C.S. MAP NO. 8-1185
PL. BOOK 50	PAGE
LOCATION PALOS VERDES	
CROSS REFERENCES:	
C.S. FILE: 25 TH ST. CONDEMNATION ①	

C.F. 2021-