

Being condemned under Superior Court Case No. 395-726  
C.F. 2009

Book 21,

206  
29

Pages 138 and 139

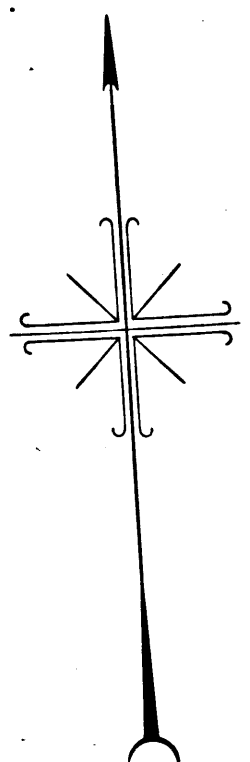
For continuation see sheet 1

INDEX 28

C.F. 2026 2-4

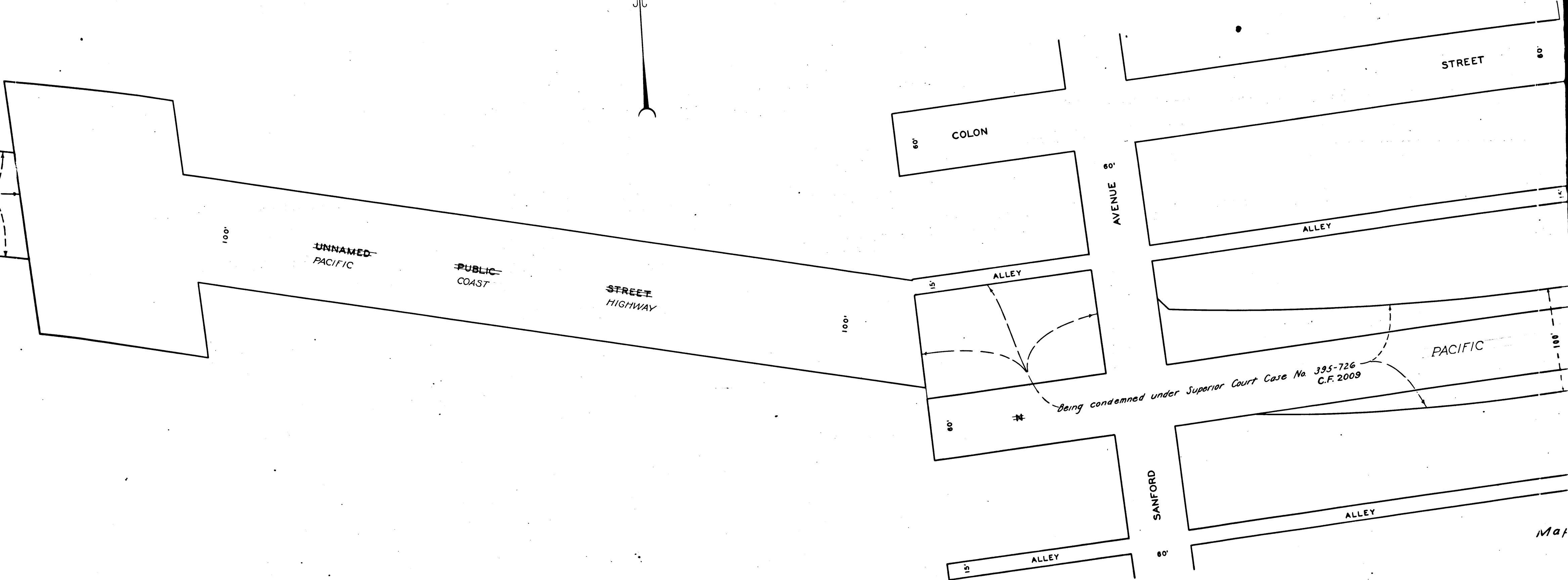
Negative of this map filed in Blue Print  
Dept. as Negative No. 275 Sht-2.

STREET



60'

395-726  
C.F. 2009



Being condemned under Superior Court Case No. 395-726  
C.F. 2009

SANFORD

60'

2

C.F. 2026 2-4

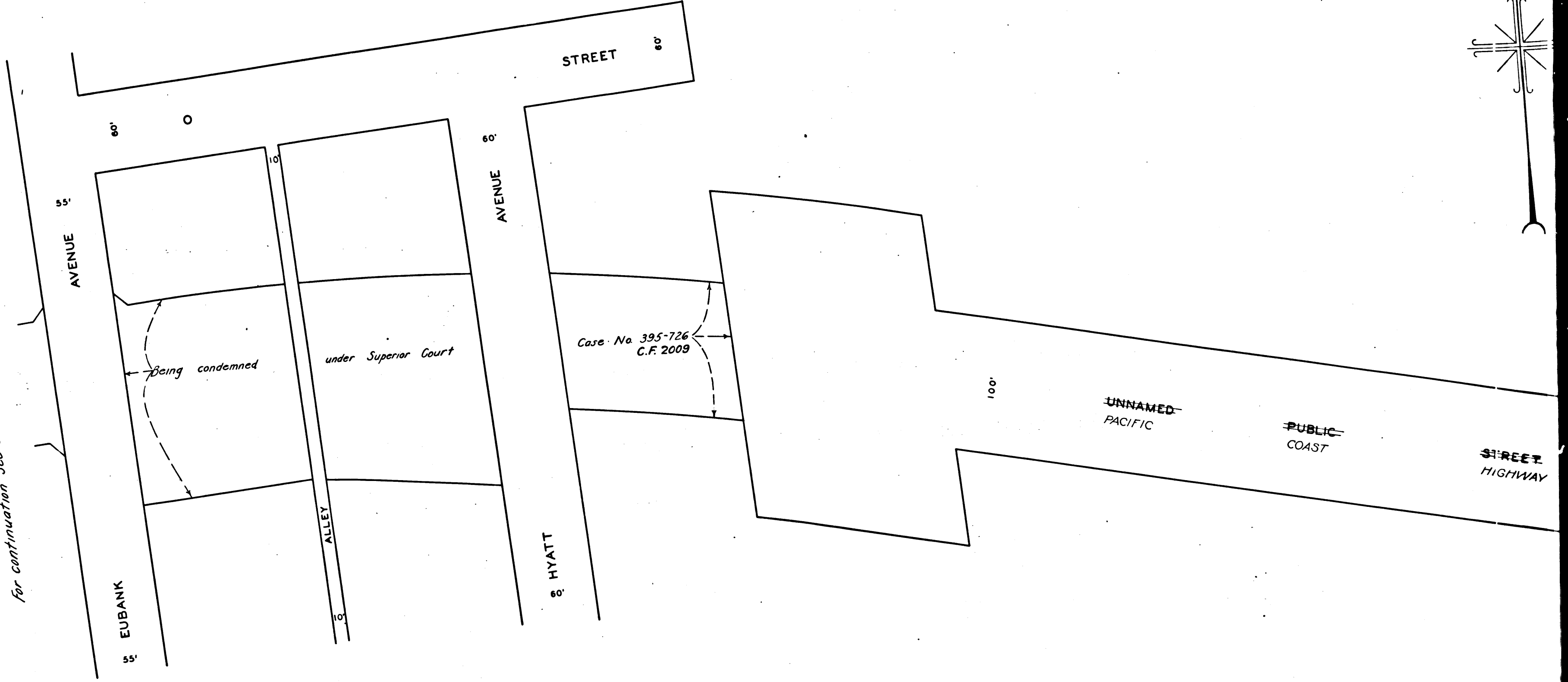
Map

007-1A

RECORDS SECTION  
COUNTY OF CALIFORNIA  
SAN FRANCISCO OFFICE

C.F. 2026-3

for continuation see sheet 3



007-1A

C.F. 2026					2-4
					3