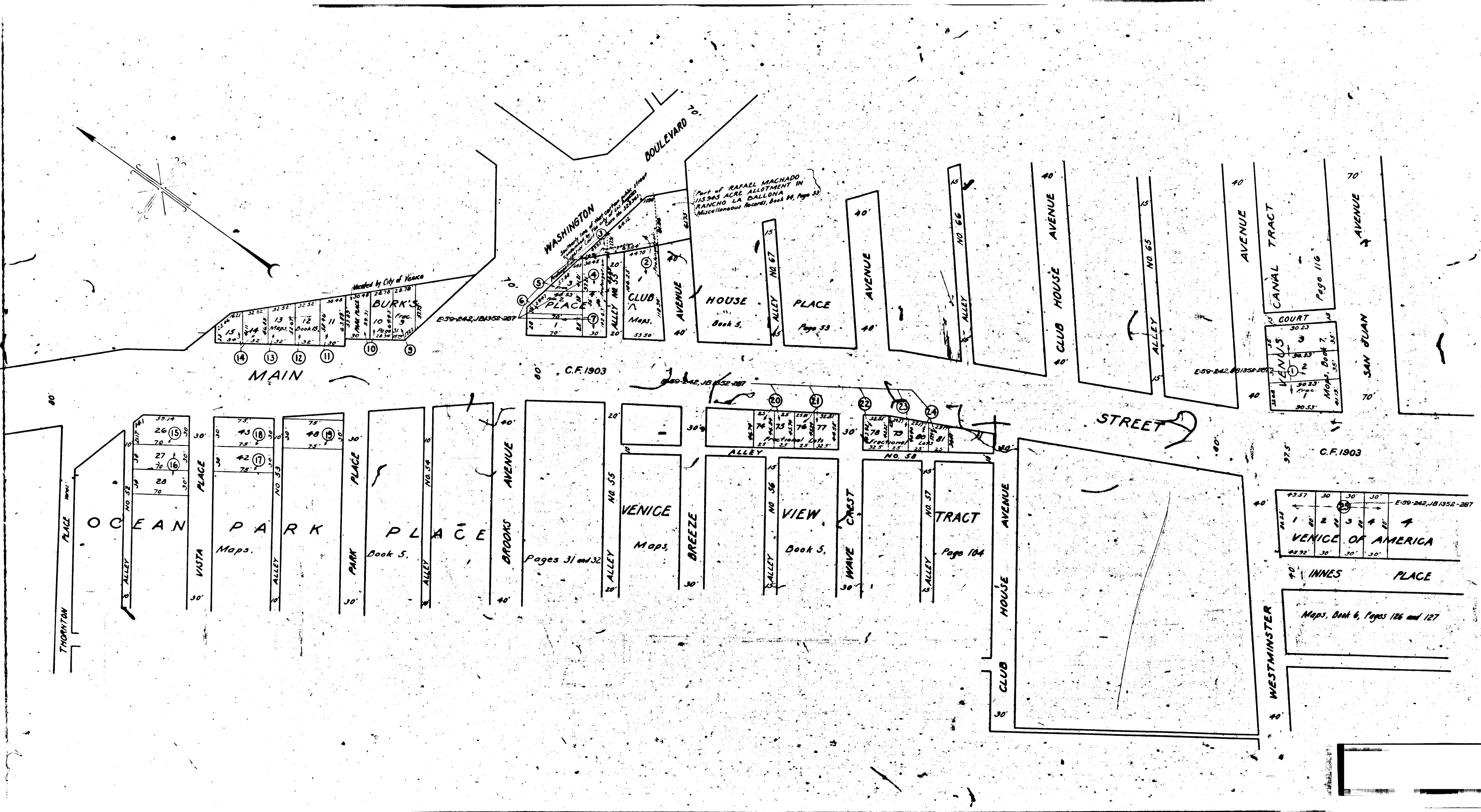


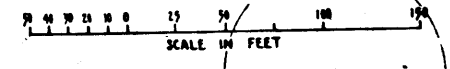
IS48-A

IS48-A

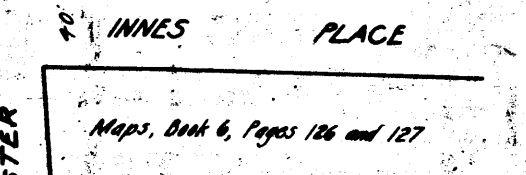
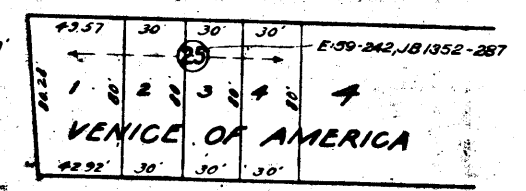


MAIN ST. - 100' N. OF NAVY ST. TO VENICE WAY
CHARGE NO. 38671

MAP
SHOWING CERTAIN REAL PROPERTIES
TO WHICH IT IS PROPOSED TO ASCERTAIN
THE DAMAGES CAUSED BY THE IMPROVEMENT OF
MAIN STREET FORMERLY SECOND AVENUE
VENICE DISTRICT
BETWEEN
THORNTON PLACE AND SAN JUAN AVENUE
AND CERTAIN ADJACENT PUBLIC STREETS AND ALLEYS
IN THE
CITY OF LOS ANGELES CALIFORNIA
IN ACCORDANCE WITH ORDINANCE NO. 77178
LLOYD ALDRICH - CITY ENGINEER NOVEMBER 1936



Superior Court Case No. 409041
Suit for Condemnation
Filed Nov. 18, 1936
City of Los Angeles, Plaintiff
vs.
Joseph Sutcliffe, et al., Def.
Note: Suit filed for the purpose
of fixing amount of damages
account of change of grade.
I.P. as to parcels 20 and 21, ren-
dered Nov. 20, 1936.
I.J. parcels 20, 21 and 24, rendered
June 10, 1937, J.B. 970-373.
I.J. parcel 22, June 21, 1937, J.B. 978-22.



NOTES:
Certain real properties to which it is proposed to ascertain damages
shown outlines in yellow.
Dotted lines and dimensions show property holdings in those
cases where they differ from recorded subdivisions.
Figures in circles indicate parcel numbers as set forth in
paragraph III of the complaint.

A-6421

IS48-A

IS48-A