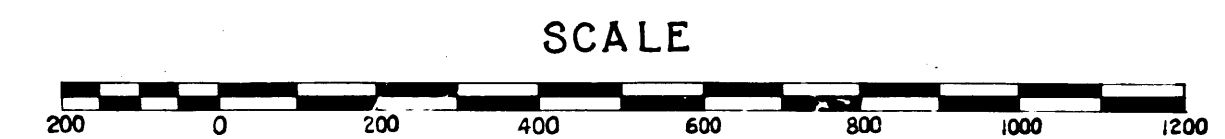


DIST.	CO.	RTE.	SEC.
VII	L. A.	164	HAW & A

APPROVED Oct. 2, 1936 *A. W. Cortright*
 DIST. ENGR. DIST. VII

STATE OF CALIFORNIA
 DEPARTMENT OF PUBLIC WORKS
 DIVISION OF HIGHWAYS

RIGHT OF WAY MAP
 OF
HAWTHORNE AVENUE
 ROAD-VII-L.A.-164-HAW & A
 FROM BROADWAY TO REDONDO BEACH BLVD.

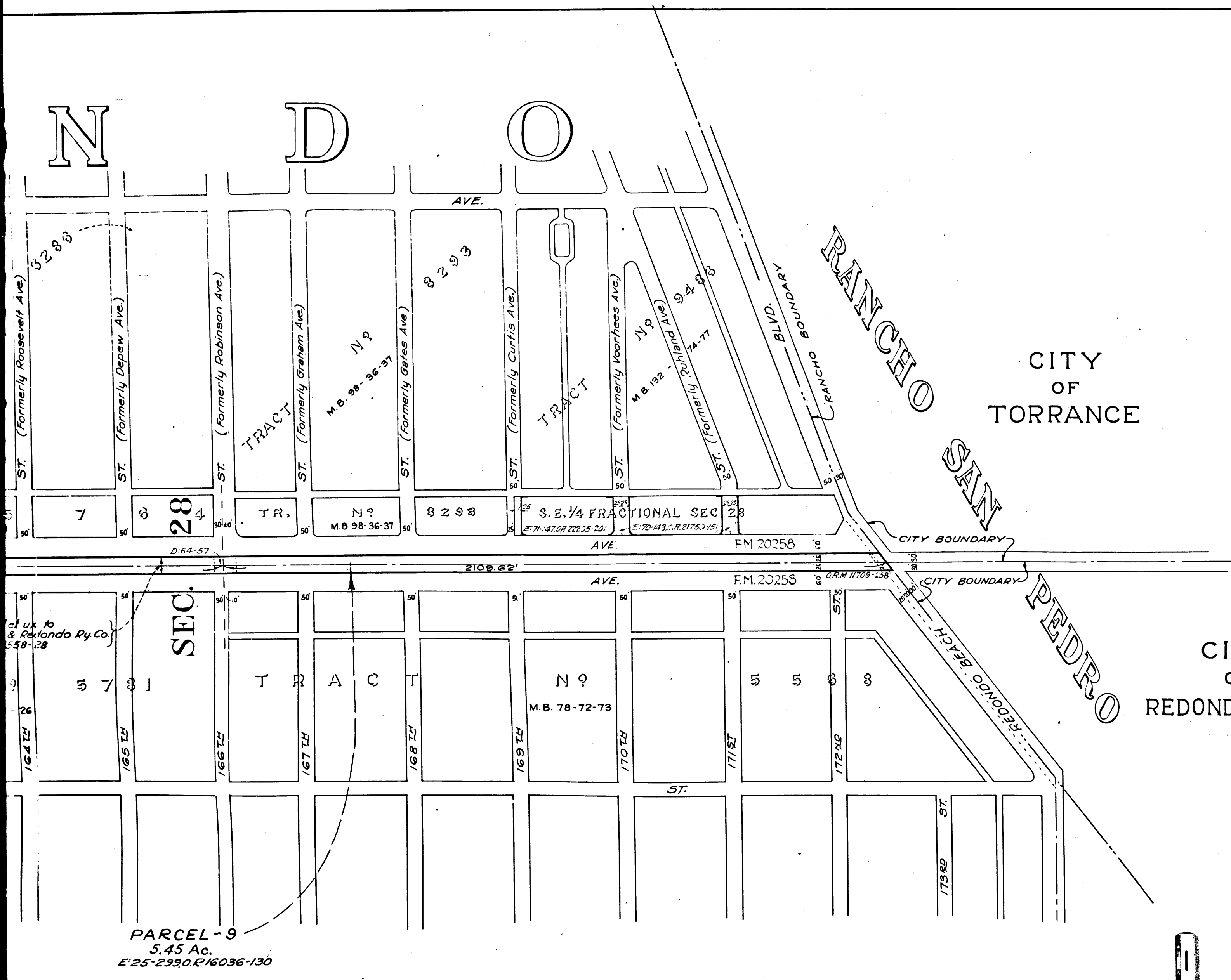


INDEX 25

Superior Court Case No. 410262
 Suit for Condemnation
 Filed Dec. 28, 1936
 People of the State of Cal., Pltff.
 Vs
 Edward F. R. Vail, et al, Def.
 Order authorizing Plaintiff to take
 immediate possession, rendered Mar.
 8, 1937.
 Interlocutory judgment as to parcel
 2, rendered Nov. 12, 1937. J.B. 987-96.
 Interlocutory judgment as to parcels
 1, 3, 4, 5, 6, 7 and 9, rendered May 6,
 1938. J.B. 999-238.
 Final judgment in favor of Pltff as
 to parcels 1, 2, 3, 4, 5, 6, 7 and 9, rendered
 August 23, 1938.
 E:25-299, O.R. 16036-130
 Case dismissed as to parcel 8, Aug. 20, 1937.

CITY
 OF
 REDONDO BEACH

CITY
 OF
 TORRANCE

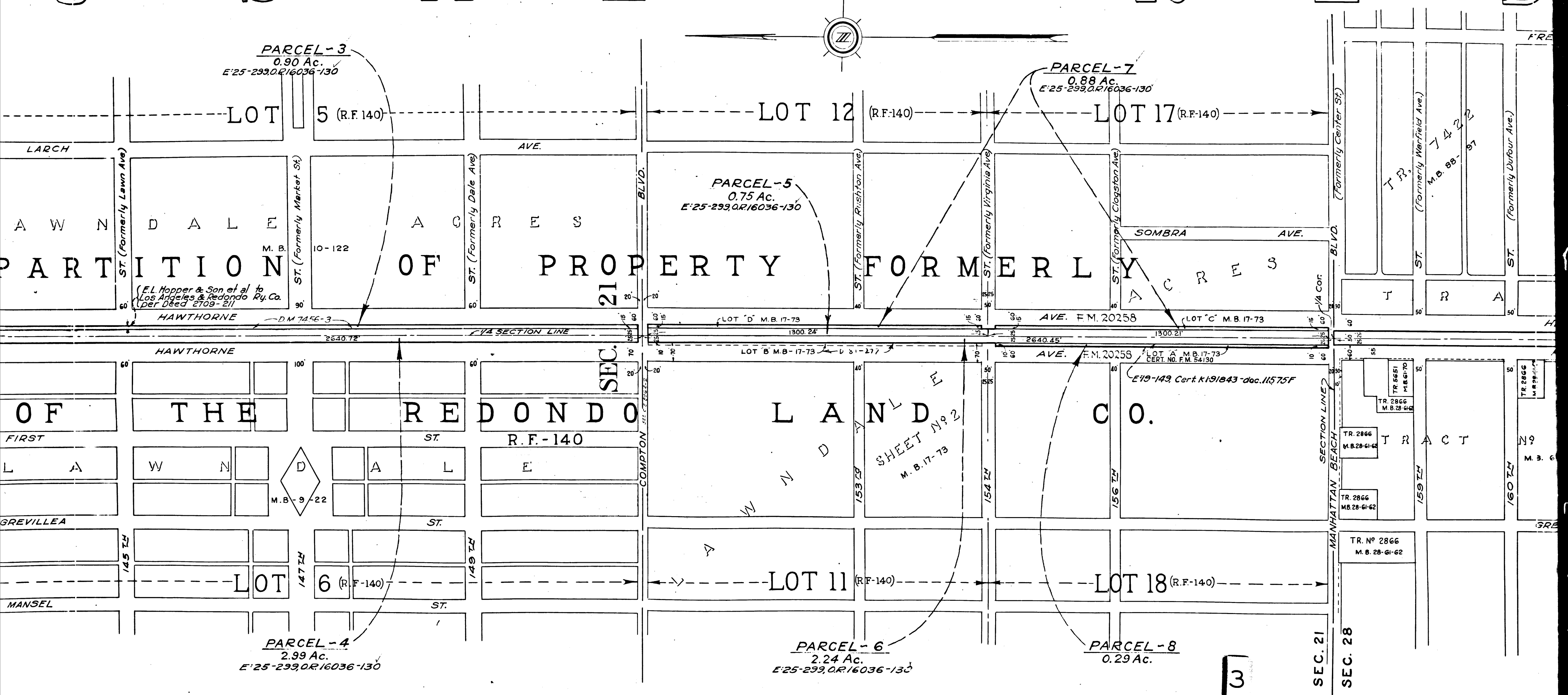


C.F. 2030-

Negative of this map filed in Blue Print Dept.
 as Negative NO. 280

RANGE 14 WEST, S.B.B. & M.

U S A L R E D

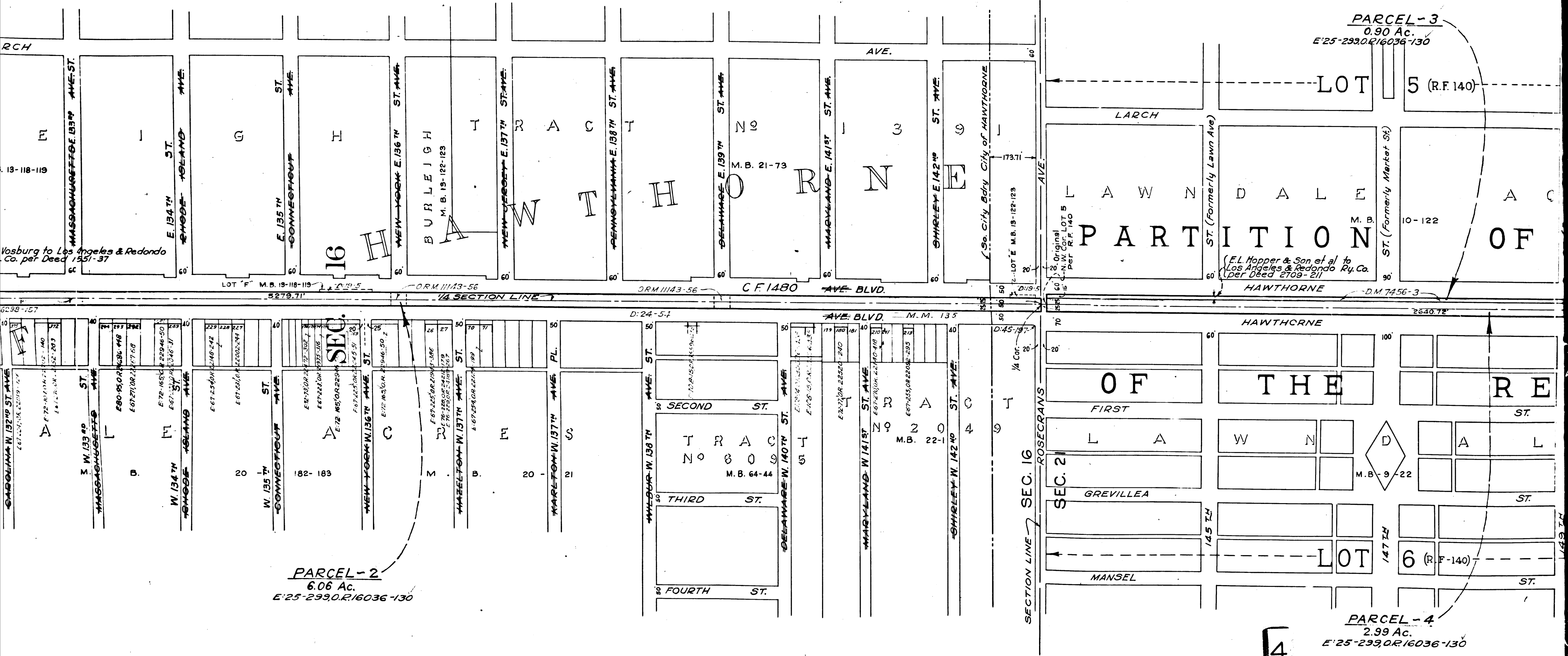


C.F. 2030-

3

TOWNSHIP 3 SOUTH, RANGE 14 WEST,

H O S A U S A



PARCEL-2
6.06 Ac.
E:25-299,0.R/16036-130

PARCEL-3
0.90 Ac.
E:25-299,0.R/16036-130

PARCEL-4
2.99 Ac.
E:25-299,0.R/16036-130

C.F. 2030-

