

EXHIBIT "A"
 MAP SHOWING PROPERTY TO BE ACQUIRED
 FOR THE WIDENING
 OF
EL MONTE AVENUE
 IN ACCORDANCE WITH A RESOLUTION OF
 THE BOARD OF SUPERVISORS OF THE COUNTY
 OF LOS ANGELES, ADOPTED ON
 SCALE: 1"=100' NOV. 1936
 ALFRED JONES COUNTY SURVEYOR

LEGEND
 Land sought to be acquired colored red.
 Numbers in circles indicate parcels sought to be condemned.
 The parcels are described in paragraph of the complaint.

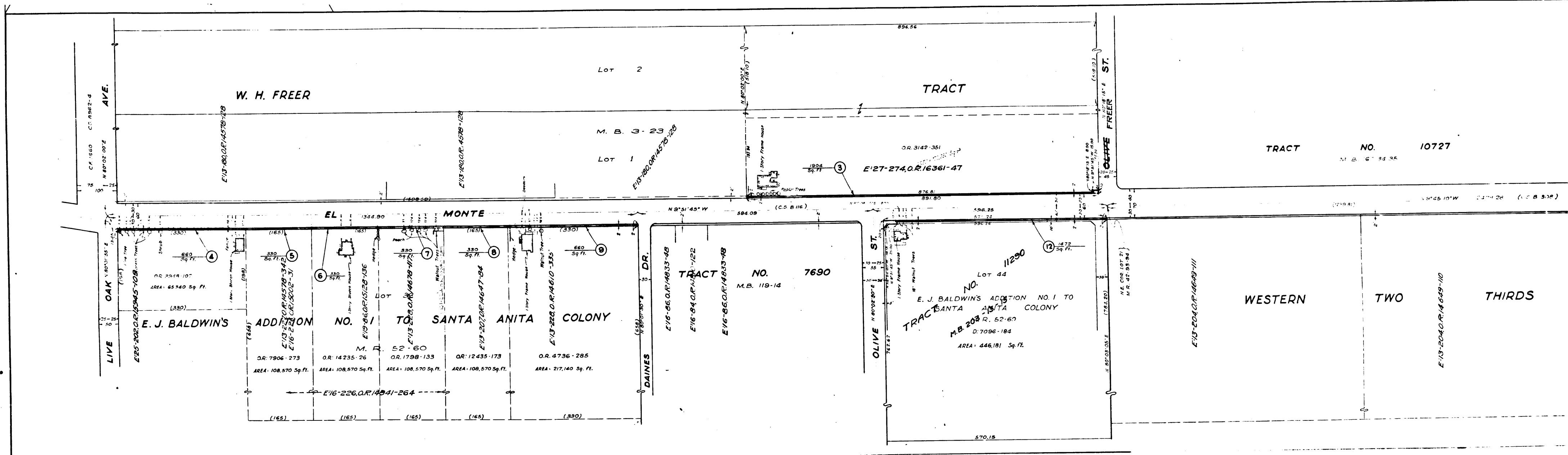
Superior Court Case No. 411291
 Suit for Condemnation
 Filed Jan. 25, 1937
 County of Los Angeles, Plfff.
 vs.
 Helen Anderson, et al., Def.
 Order authorizing Plfff. to take
 immediate possession, rendered
 Jan. 27, 1937.
 Case Dismissed as to Mar. 8, Oct. 29, 41.
 " " " " " 12, 10-24-44

INDEX 44-46

DRAWN BY	DATE	CHECKED BY	DATE
W. J. Jones	11-25-36	W. J. Jones	11-25-36
INDEX MAP NO. 46(A) 44(D45)		SUPERVISORIAL DISTRICT NO.	
CO. SURV'S		NO. 102, 103	
PREVIOUS BOOK NO. 115		C.S. MAP NO. 1008, 1116	
BOOK 41		MAP NO.	
LOCATION Arcadia			
CO. SUR. FILE: EL MONTE AVE. COND. (1)			

Negative of this map filed in Blue Print
 Dept. as Negative No. 285.

C.F. 2032-



2

C.F. 2032-
