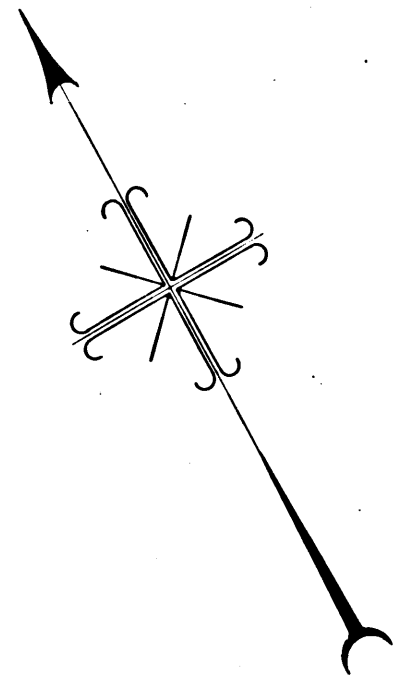
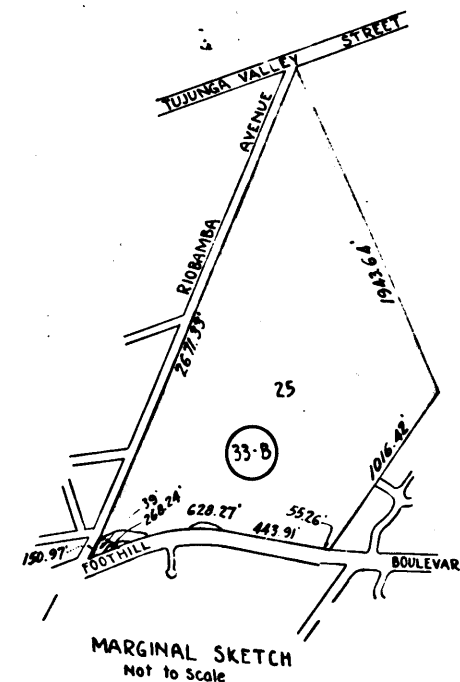
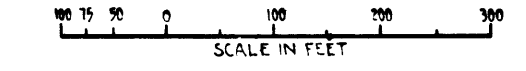


M-311

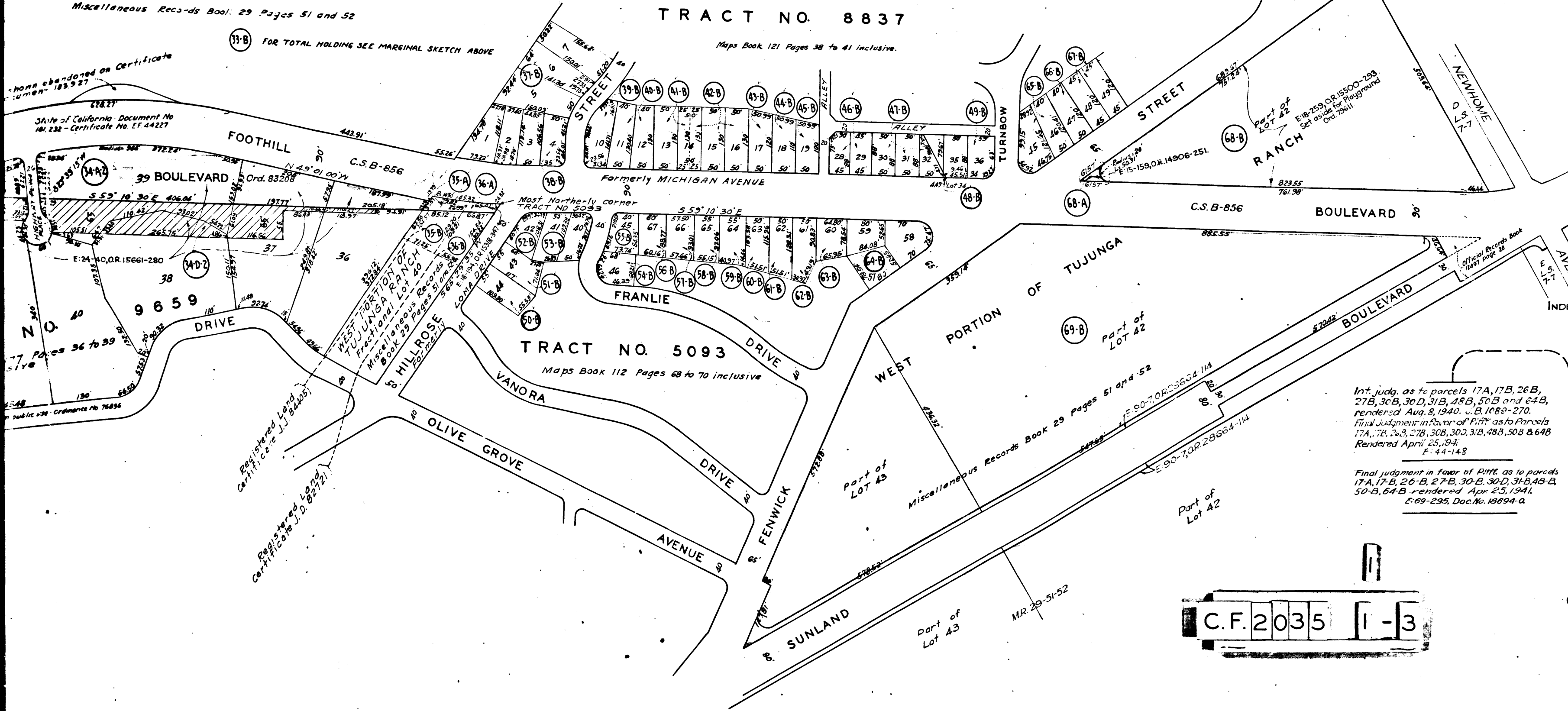


MAP
 SHOWING REAL PROPERTIES TO BE CONDEMNED
 FOR PUBLIC STREET PURPOSES
 ALSO
 SHOWING REAL PROPERTIES
 TO WHICH IT IS PROPOSED TO ASCERTAIN DAMAGES IF ANY
 WHICH WILL BE CAUSED BY THE PROPOSED IMPROVEMENT
 ALSO
 SHOWING EASEMENTS AND RIGHTS OF WAY TO BE CONDEMNED
 FOR THE CONSTRUCTION OF STORM DRAINS AND FOR THE EXTENSION
 OF SLOPES OF FILLS AND/OR CUTS
 ALL FOR PUBLIC STREET PURPOSES
 IN CONNECTION WITH THE PROPOSED
**FOOTHILL BOULEVARD
 IMPROVEMENT PROJECT**
 BETWEEN
 TERRA BELLA STREET
 AND A POINT APPROXIMATELY 250 FEET SOUTHEASTERLY OF
 FENWICK STREET
 IN THE CITY OF LOS ANGELES CALIFORNIA
 IN ACCORDANCE WITH ORDINANCE NO. 77440
 LLOYD ALDRICH CITY ENGINEER JANUARY 1937



Prors. Foothill Blvd. relinquished by State to City of LA - E-8-80, O.R. 15579-96

REGISTERED LAND
 Certificate E.F. 44227
 Part of Lot 25
 WEST PORTION OF TUJUNGA RANCH
 Miscellaneous Recs-As Book 29 Pages 51 and 52



- Notes:-
1. Land to be condemned for public street purposes shown colored red.
 2. Real properties to which it is proposed to ascertain damages, if any, shown outlined in yellow.
 3. Easements and rights of way to be condemned for the construction of storm drains shown thus [hatched pattern].
 4. Easements and rights of way to be condemned for the extension of slopes shown thus [dotted pattern].
 5. Dotted lines and dimensions show property holdings in those cases where they differ from recorded subdivisions.
 6. Figures and letters in circles indicate parcels as set forth in paragraph XXV of the complaint.

Superior Court Case No. 413262
 Suit for Condemnation
 Filed Mar. 15, 1937
 City of Los Angeles, Plaintiff
 Vs
 Howard Burbank, et al., Def.
 Order authorizing Plaintiff to take
 immediate possession, rendered
 Mar. 15, 1937.
 Case dismissed as to parcels 5A, 5B, 5B2,
 5C, 5D, 5E, 10A, 10B, 24A, 24A2, 24B, 24B2,
 24B3, 24B4, 32A, 32A2, 32A3, 32B, 32B2,
 32B3, 32B4, 32D, 32D2, 32D3, 32D4, 36A
 and 36B. I.P. Deposits released.
 Int. Judg. as to parcels 4A, 4B, 4B2, 4D, 4D2,
 4D3, 4D4, 6A, 6B, 6B2, 9A, 9B, 9B2,
 11A, 11B, 14A, 14B, 22A, 22B, 22B2, 38B, 38B2,
 45B, 46B, 49B, 51B, 52B, 53B, 55B, 56B, 58B,
 59B, 60B and 61B rendered from June 7,
 1937 to Feb. 23, 1938. I.P. deposits released.
 Case dismissed as to parcels 2A, 2B, 8A, 8B,
 29B-1 to B-7 and 29 D1 to D3, Apr. 12, 1938.
 Int. Judg. as to parcels 13A and 13B rendered
 May 6, 1938. J.B. 994-344.
 Case dismissed as to parcels 33A to D and 34A-1
 to D-2 on May 12, 1938. I.P. deposits released.
 Int. Judg. as to parcels 1A, 1B-1, 1B-2, 25A-1 to
 25D-4, 35A, 35B, 37B, 39B, 40B, 44B, 54B,
 62B and 63B, May 3, 1938. J.B. 999-209.
 Int. Judg. as to parcels 15B, 15B2, rendered July
 12, 1938. J.B. 1029-131.
 Int. Judg. as to parcels 21A and 21B, rendered
 July 14, 1938. J.B. 1029-165.

Int. Judg. as to parcels 12A and 12B,
 rendered Apr. 5, 1939. J.B. 1225-171.
 Int. Judg. as to parcels 1A, 2B, 3B2, 4, 6A,
 rendered July 5, 1939. J.B. 130-14.
 Int. Judg. as to parcels 2A and 2B,
 rendered Aug. 25, 1939. J.B. 1015-217.
 Int. Judg. as to parcels 16A and 16B,
 rendered Oct. 1, 1939. J.B. 1025-313.
 Int. Judg. as to parcels 15A, rendered
 July 19, 1939. J.B. 1038-10.
 Int. Judg. as to parcels 23A, 23B, and 23B2,
 rendered Sept. 6, 1939. J.B. 1035-17.
 Int. Judg. as to parcels 14B, rendered
 Oct. 9, 1939. J.B. 1043-37.
 Int. Judg. as to parcels 18A and 18B,
 rendered Oct. 9, 1939. J.B. 1043-41.
 Int. Judg. as to parcels 7A and 7B,
 rendered Nov. 3, 1939. J.B. 1046-5.
 Case dismissed as to parcel 15B on
 June 5, 1939.

Final Judgment in favor of Plaintiff
 as to parcels 1A, 1B-1, 1B-2, 3A, 3B, 3B2,
 3D, 4A, 4B, 4B2, 4D, 4D2, 4D3, 4D4, 6A,
 6B, 6B2, 7A, 7B, 9A, 9B, 9B2, 11A, 11B, 12,
 12B, 13A, 13B, 14A, 14B, 15A, 15B, 16A, 16B, 16B2,
 18B, 19A, 19B, 21A, 21B, 22A, 22B, 22B2, 23A,
 23B, 23B2, 25A, 25A2, 25A3, 25A4, 25B, 25B2,
 25B3, 25B4, 25D, 25D2, 25D3, 25D4, 25D5,
 25D6, 25D7, 25D8, 25D9, 25D10, 25D11, 25D12,
 25D13, 25D14, 25D15, 25D16, 25D17, 25D18,
 25D19, 25D20, 25D21, 25D22, 25D23, 25D24,
 25D25, 25D26, 25D27, 25D28, 25D29, 25D30,
 25D31, 25D32, 25D33, 25D34, 25D35, 25D36,
 25D37, 25D38, 25D39, 25D40, 25D41, 25D42,
 25D43, 25D44, 25D45, 25D46, 25D47, 25D48,
 25D49, 25D50, 25D51, 25D52, 25D53, 25D54,
 25D55, 25D56, 25D57, 25D58, 25D59, 25D60,
 25D61, 25D62, 25D63, 25D64, 25D65, 25D66,
 25D67, 25D68, 25D69, 25D70, 25D71, 25D72,
 25D73, 25D74, 25D75, 25D76, 25D77, 25D78,
 25D79, 25D80, 25D81, 25D82, 25D83, 25D84,
 25D85, 25D86, 25D87, 25D88, 25D89, 25D90,
 25D91, 25D92, 25D93, 25D94, 25D95, 25D96,
 25D97, 25D98, 25D99, 25D100, rendered
 November 12, 1939.

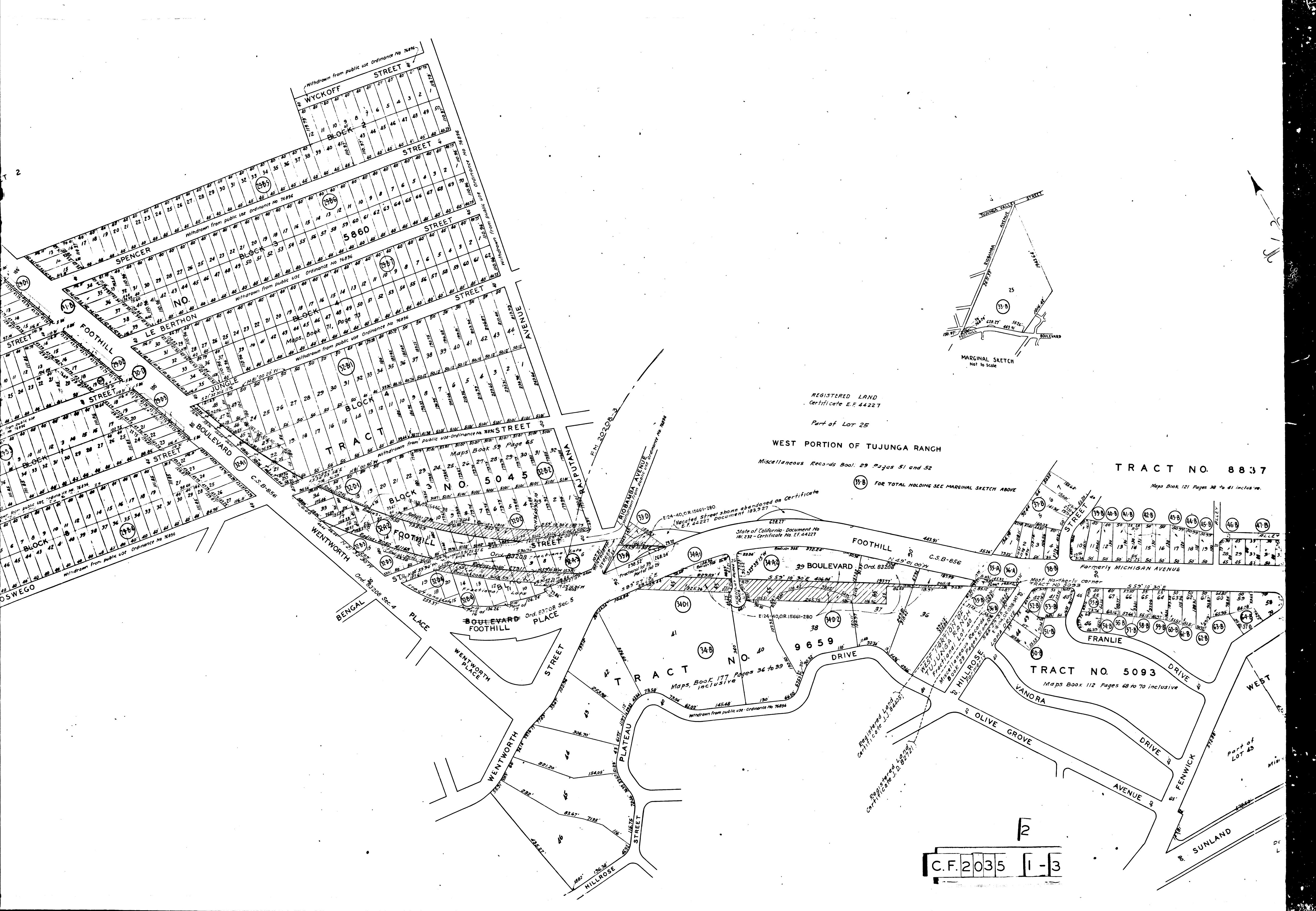
E-37-1, O.R. 17015-301.

C.F. 2035 1-3

M-311

Negative of this map filed in Blue Print
 Dept. as Negative No. 303 Sht. 1

M-311



Withdrawn from public use Ordinance No. 76896

Withdrawn from public use Ordinance No. 76896

Withdrawn from public use Ordinance No. 76896

Withdrawn from public use Ordinance No. 76896

Withdrawn from public use Ordinance No. 76896

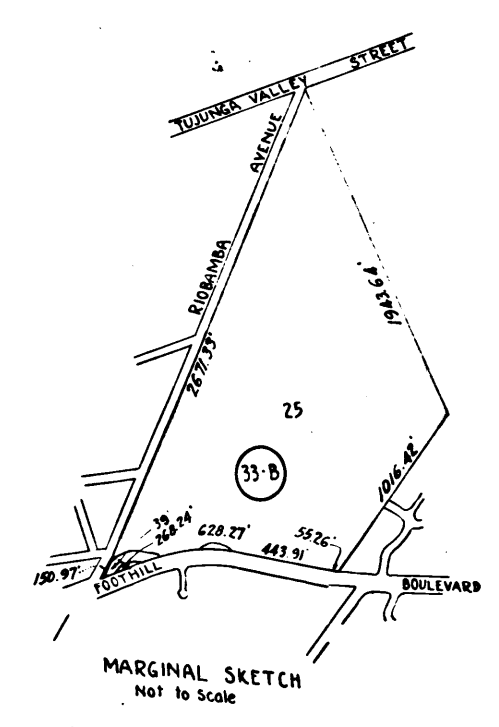
Withdrawn from public use Ordinance No. 76896

Withdrawn from public use Ordinance No. 76896

Withdrawn from public use Ordinance No. 76896

Withdrawn from public use Ordinance No. 76896

Withdrawn from public use Ordinance No. 76896



REGISTERED LAND
Certificate E.F. 44227
Part of LOT 25
WEST PORTION OF TUJUNGA RANGH
Miscellaneous Records Boal. 29 Pages 51 and 52

(11-B) FOR TOTAL HOLDING SEE MARGINAL SKETCH ABOVE

TRACT NO. 8837
Maps Book 121 Pages 38 to 41 inclusive

State of California Document No. 181,232 - Certificate No. E.F. 44227
Vacated street shown abandoned on Certificate E.F. 44227 document 183,927

State of California Document No. 181,232 - Certificate No. E.F. 44227
Vacated street shown abandoned on Certificate E.F. 44227 document 183,927

State of California Document No. 181,232 - Certificate No. E.F. 44227
Vacated street shown abandoned on Certificate E.F. 44227 document 183,927

State of California Document No. 181,232 - Certificate No. E.F. 44227
Vacated street shown abandoned on Certificate E.F. 44227 document 183,927

State of California Document No. 181,232 - Certificate No. E.F. 44227
Vacated street shown abandoned on Certificate E.F. 44227 document 183,927

State of California Document No. 181,232 - Certificate No. E.F. 44227
Vacated street shown abandoned on Certificate E.F. 44227 document 183,927

State of California Document No. 181,232 - Certificate No. E.F. 44227
Vacated street shown abandoned on Certificate E.F. 44227 document 183,927

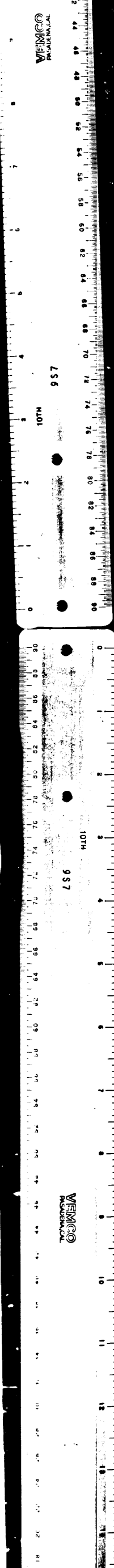
State of California Document No. 181,232 - Certificate No. E.F. 44227
Vacated street shown abandoned on Certificate E.F. 44227 document 183,927

State of California Document No. 181,232 - Certificate No. E.F. 44227
Vacated street shown abandoned on Certificate E.F. 44227 document 183,927

State of California Document No. 181,232 - Certificate No. E.F. 44227
Vacated street shown abandoned on Certificate E.F. 44227 document 183,927

State of California Document No. 181,232 - Certificate No. E.F. 44227
Vacated street shown abandoned on Certificate E.F. 44227 document 183,927

C.F. 2035 1-3



11E-M

FOR CONTINUATION SEE SHEET 2

FOR CONTINUATION SEE SHEET 2

11E-M

