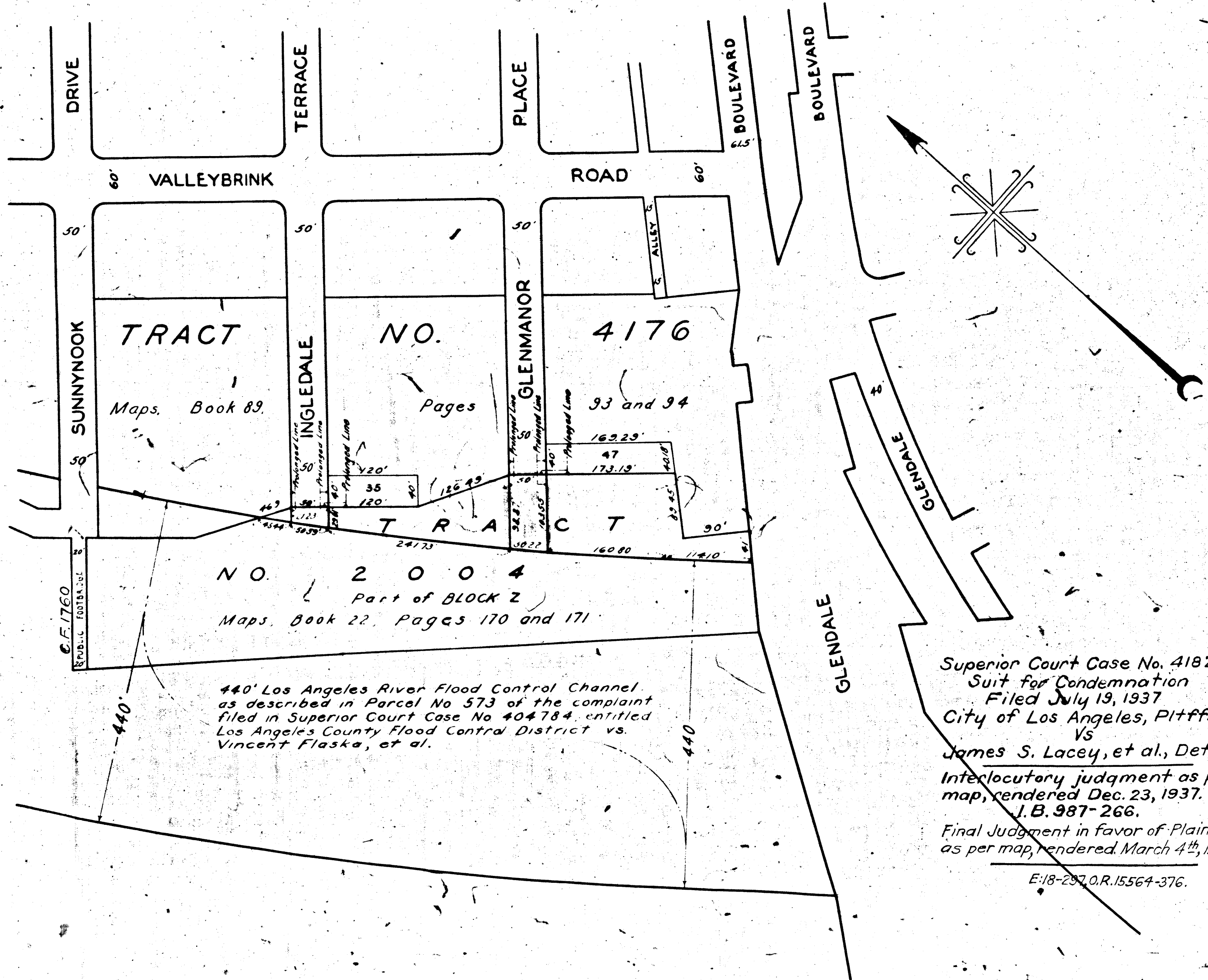


0440-A

RETURN TO CITY ENGINEER'S OFFICE  
CITY OF LOS ANGELES  
BOULEVARD OF THE

0440-A



GLENMANOR PL. & INGLEDAL TERRACE ST DR.  
CHARGE NO. 66433 FILE NO. 4442-36

MAP  
 SHOWING EASEMENTS AND RIGHTS-OF-WAY  
 TO BE CONDEMNED FOR  
**PUBLIC STORM DRAIN PURPOSES**  
 IN OVER ALONG UPON AND ACROSS  
 CERTAIN REAL PROPERTIES  
 LOCATED SOUTHWESTERLY OF  
**VALLEYBRINK ROAD**  
 AND NORTHWESTERLY OF  
**GLENDALE BOULEVARD**  
 IN THE CITY OF LOS ANGELES, CALIFORNIA  
 IN ACCORDANCE WITH ORDINANCE NO. 78146  
 LLOYD ALDRICH - CITY ENGINEER JUNE 1937  
 SCALE 1 INCH = 100 FEET

INDEX 40

NOTE  
Easements and rights-of-way to be condemned  
shown colored red

Superior Court Case No. 418287  
 Suit for Condemnation  
 Filed July 19, 1937  
 City of Los Angeles, Plaintiff  
 Vs  
 James S. Lacey, et al., Def.  
 Interlocutory judgment as per  
 map, rendered Dec. 23, 1937.  
 J.B. 987-266.  
 Final Judgment in favor of Plaintiff  
 as per map, rendered March 4<sup>th</sup>, 1938.

E:18-297, O.R. 15564-376.

SEARCHED	JUL 1 1937
INDEXED	JUL 1 1937
SERIALIZED	JUL 1 1937
FILED	JUL 1 1937
Merrill Butler	

A-6440

0440-A

RETURN TO CITY ENGINEER'S OFFICE  
CITY OF LOS ANGELES  
BOULEVARD OF THE

0440-A