

1440-A

1440-A

RETURN TO CITY ENGINEER'S OFFICE  
CITY OF LOS ANGELES  
PROPERTY OF THE

1440-A

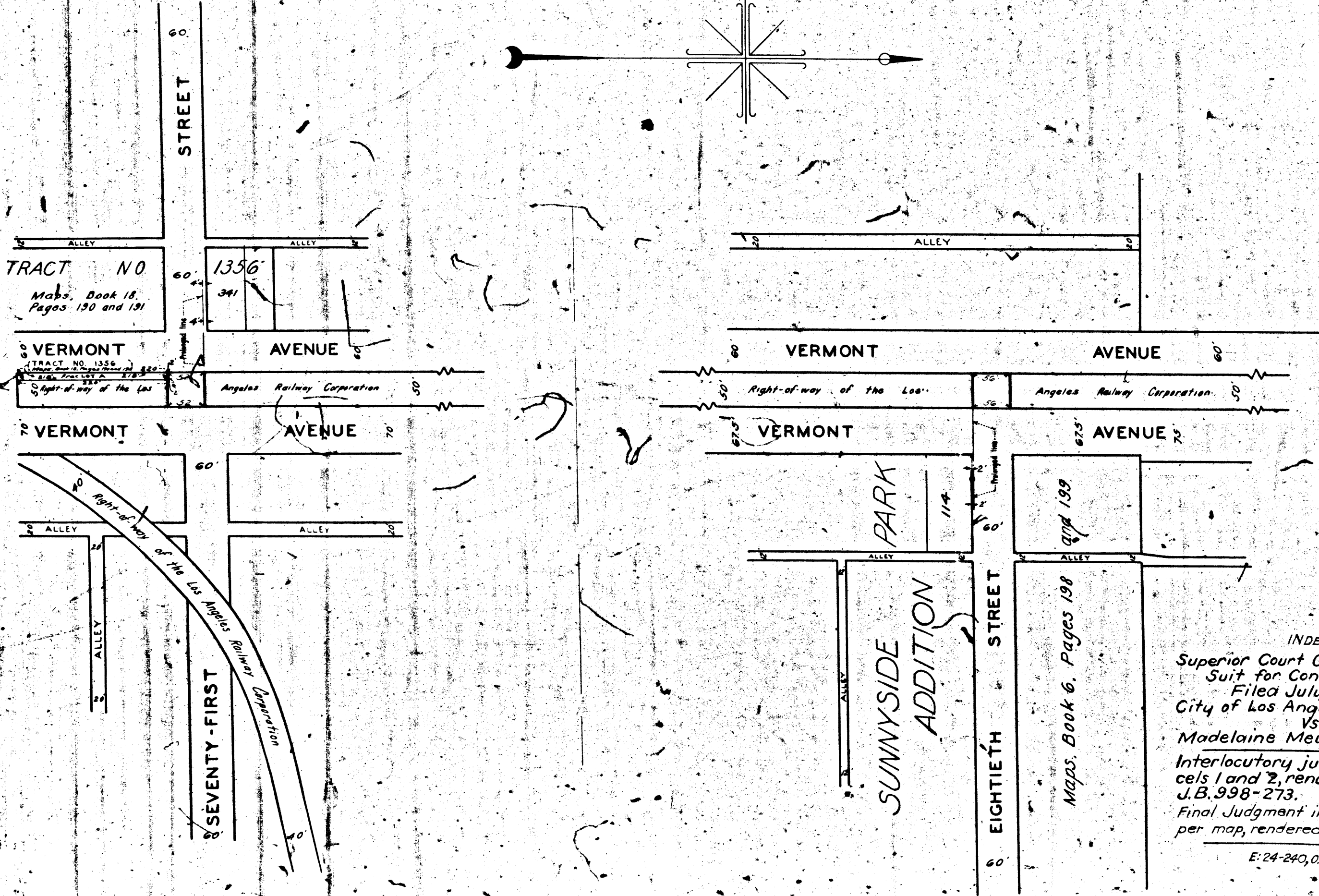
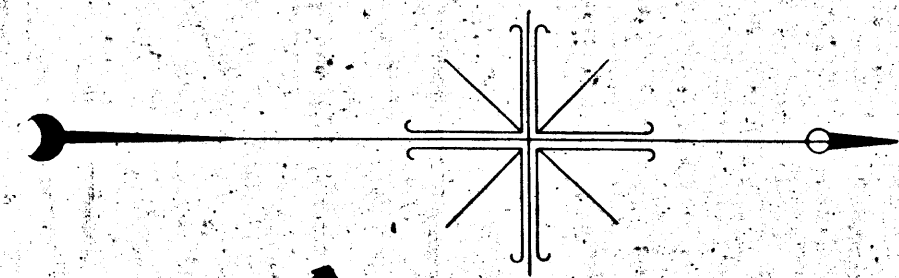
RETURN TO CITY ENGINEER'S OFFICE  
CITY OF LOS ANGELES  
PROPERTY OF THE

1440-A

DIST. MAP #743

DIST. MAP #142

71st ST at L.A. Ry. R/W in VERMONT AVE.  
CHARGE NO. 62018 FILE NO. 2302'36



MAP  
SHOWING CERTAIN REAL PROPERTY TO BE  
CONDEMNED FOR PUBLIC STREET PURPOSES  
FOR THE OPENING OF  
**SEVENTY-FIRST STREET AND EIGHTIETH STREET**  
ACROSS THE RIGHT-OF-WAY OF THE  
LOS ANGELES RAILWAY CORPORATION  
BETWEEN THE EASTERLY AND WESTERLY ROADWAYS OF  
**VERMONT AVENUE**  
IN THE CITY OF LOS ANGELES, CALIFORNIA  
IN ACCORDANCE WITH ORDINANCE NO. 78144  
LLOYD ALDRICH - CITY ENGINEER JULY 1937  
SCALE: 1 INCH = 100 FEET

NOTE  
Certain real property to be condemned for public street purposes shown  
colored red.

INDEX 24  
Superior Court Case No. 418594  
Suit for Condemnation  
Filed July 28, 1937  
City of Los Angeles, Pltff.  
vs  
Madelaine Meyer, et al, Def.  
Interlocutory judgment as to par-  
cels 1 and 2, rendered July 14, 1938.  
J.B. 998-273.  
Final Judgment in favor of Pltff. as  
per map, rendered August 23rd, 1938.

E: 24-240, O.K. 15989-257

SUBMITTED	July 1, 1937
BY	G. L. ...
APPROVED	JULY 1, 1937
	Merrill Butler

A-6441

