

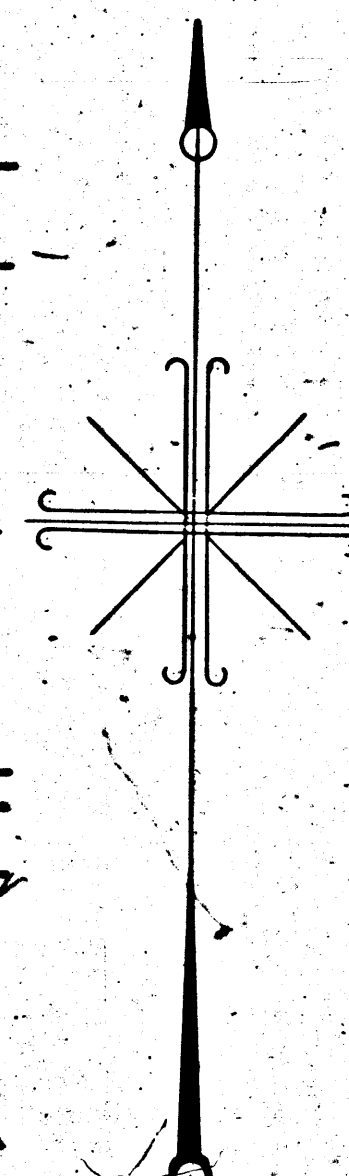
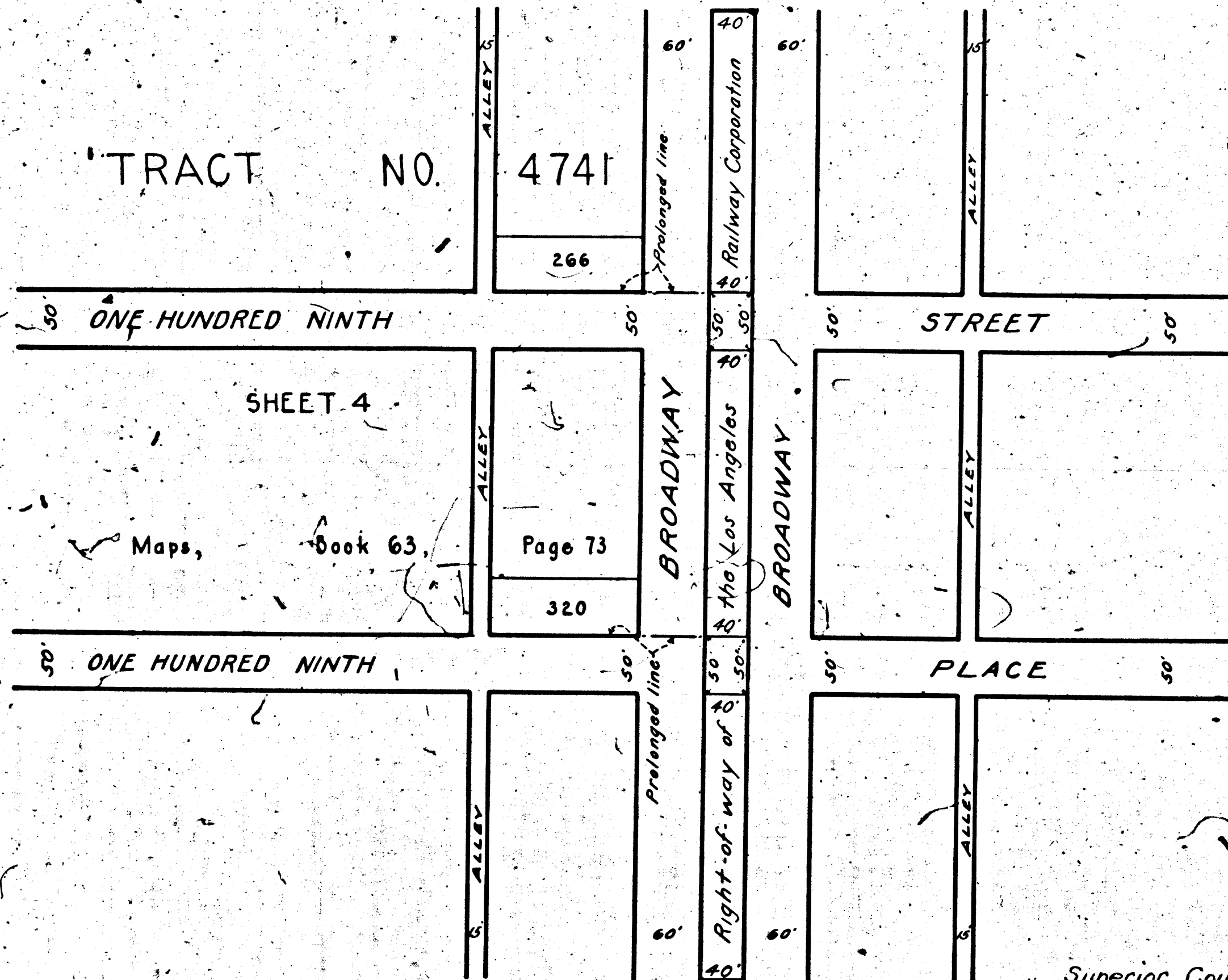
ST40-A

ST40-A

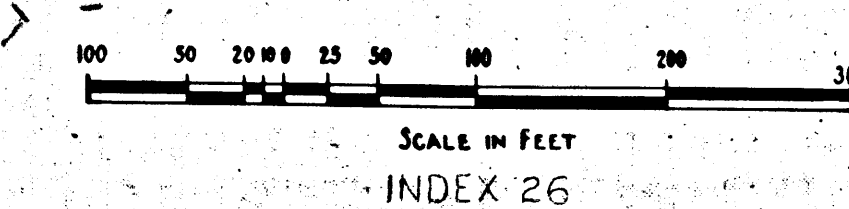
ST40-A

ST40-A

109th ST. & 109th PL. OVER L.A. Ry. R/W IN BROADWAY
CHARGE NO. 75676 FILE NO. 1477-1937



MAP
 SHOWING CERTAIN REAL PROPERTY TO BE
 CONDEMNED FOR PUBLIC STREET PURPOSES
 ACROSS THE RIGHT-OF-WAY OF THE
 LOS ANGELES RAILWAY CORPORATION
 BETWEEN THE EASTERLY AND WESTERLY ROADWAYS OF
 BROADWAY
 AT ONE HUNDRED NINTH STREET AND AT
 ONE HUNDRED NINTH PLACE
 IN THE CITY OF LOS ANGELES CALIFORNIA
 IN ACCORDANCE WITH ORDINANCE NO. 78849
 LLOYD ALDRICH-CITY ENGINEER DECEMBER 1937



NOTE:
Real property to be condemned shown colored red.

Superior Court Case No. 423727
 Suit for Condemnation
 Filed Dec. 31, 1937
 City of Los Angeles, Plaintiff
 VS
 Los Angeles Railway Corp., et al., Def.
 Interlocutory judgment as per map,
 rendered Mar. 13, 1938, J.B. 993-357.
 Final judgment in favor of Plaintiff, as
 per map, rendered March 31, 1938.

E-2459, OR 157, H-67.

Submitted Dec. 27th 1937
 By *[Signature]*
 City Engineer
 APPROVED: Dec. 27, 1937
[Signature]
 APPROVED: Dec. 27, 1937
[Signature]

A-6472

