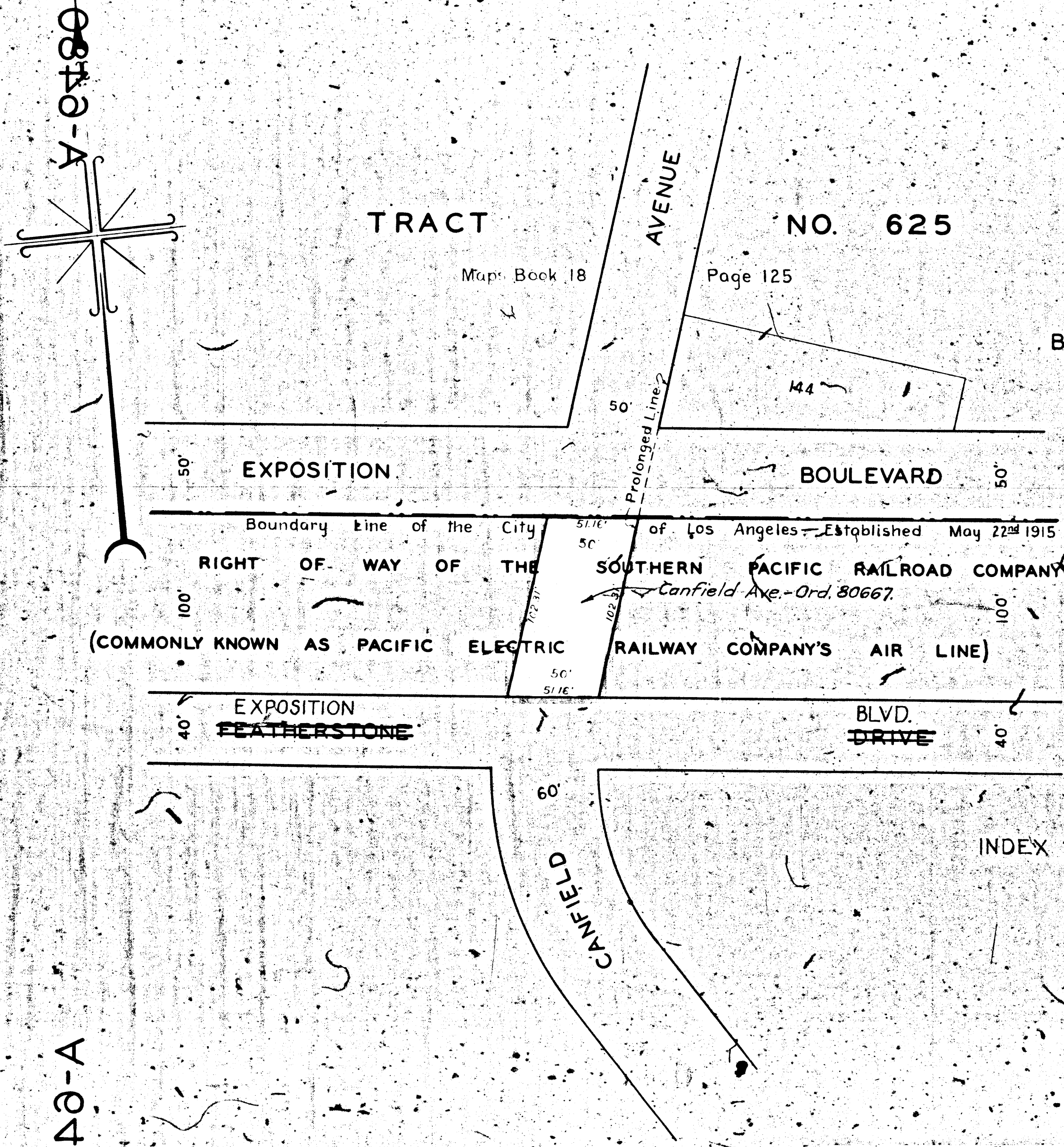


0848-A

0848-A



# MAP

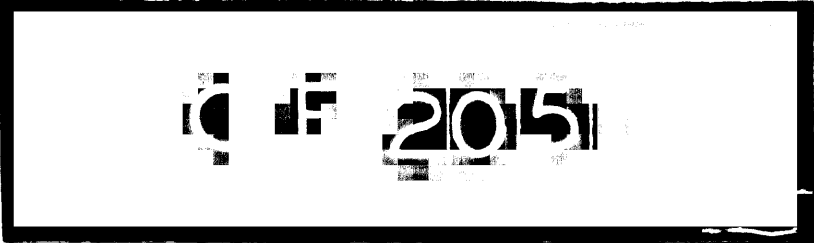
SHOWING CERTAIN REAL PROPERTY TO BE  
 CONDEMNED FOR PUBLIC STREET PURPOSES  
 ACROSS THE RIGHT OF WAY OF THE  
 SOUTHERN PACIFIC RAILROAD COMPANY, (COMMONLY KNOWN  
 AS THE PACIFIC ELECTRIC RAILWAY COMPANY'S AIR LINE)  
 BETWEEN EXPOSITION BOULEVARD AND FEATHERSTONE DRIVE AT  
**CANFIELD AVENUE**  
 IN THE CITY OF LOS ANGELES CALIFORNIA

IN ACCORDANCE WITH ORDINANCE NO. 79054  
 LLOYD ALDRICH-CITY ENGINEER JANUARY 1938  
 SCALE: 1 INCH = 50 FEET

Superior Court Case No. 424545  
 Suit for Condemnation  
 Filed Jan. 28, 1938  
 City of Los Angeles, Plaintiff  
 vs  
 Sou. Pac. Railroad Co., et al., Def.  
 Interlocutory judgment as per map,  
 rendered May 18, 1938. J.B. 994-380.  
 Final Judgment in favor of Plaintiff, as  
 per map, rendered August 26th, 1938.  
 E: 24-24, OR. 16324-172.

NOTE  
 Real Property to be condemned shown colored red

QUANTITY *Jan 25 1938*  
 BY *H. M. Goldworthy*  
 APPROVED *Jan 25 1938*  
 LLOYD ALDRICH  
 CITY ENGINEER  
 FILED *Jan 26 1938*  
*Lloyd Aldrich*  
 CITY ENGINEER



A-6480

0848-A

0848-A