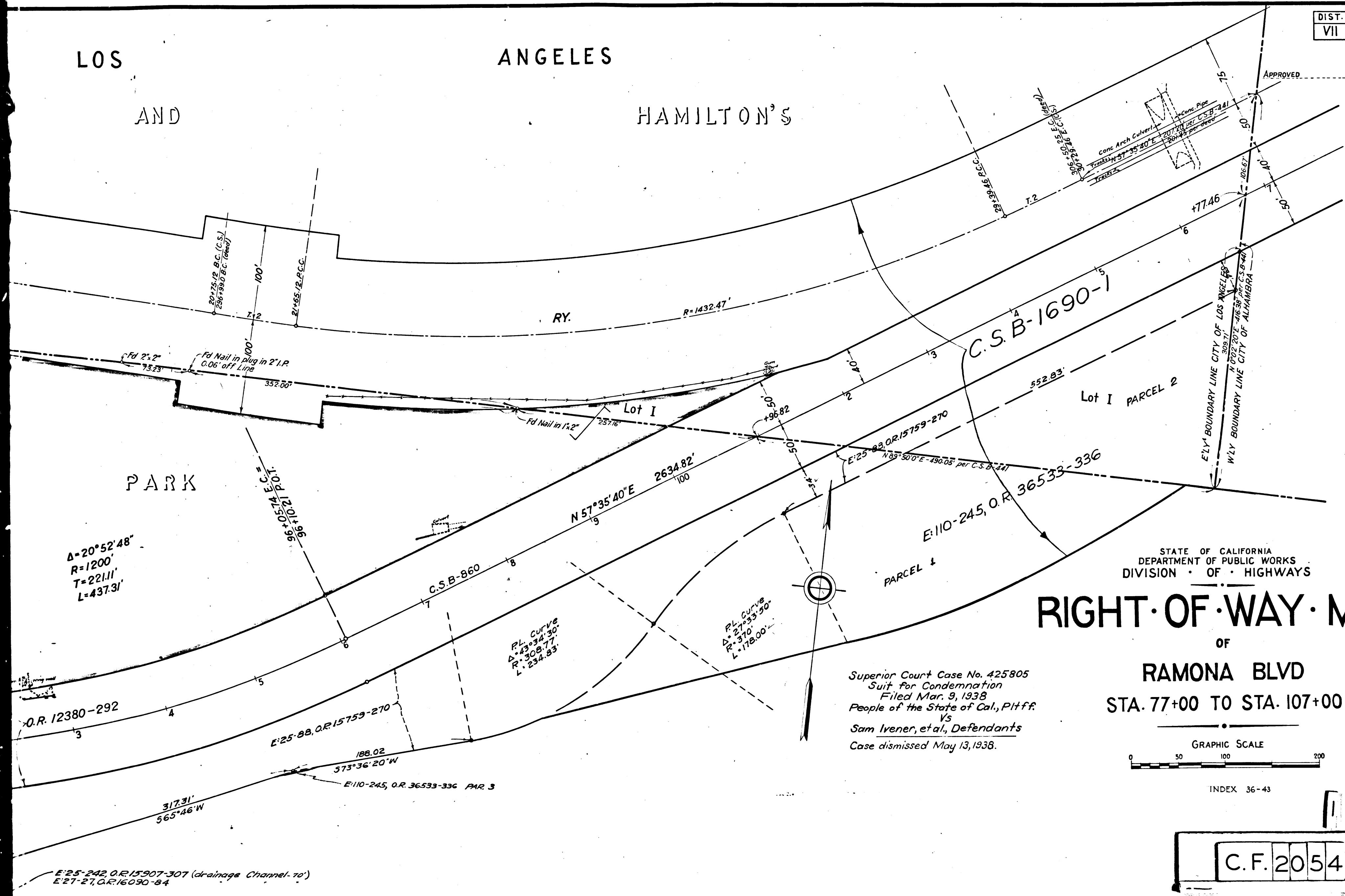


DIST.	COUNTY	ROUTE	SEC.
VII	L. A.	26	D-LA

LOS
AND

ANGELES
HAMILTON'S

APPROVED _____
DISTRICT ENGINEER, DIST. VII



$\Delta = 20^\circ 52' 48''$
 $R = 1200'$
 $T = 221.11'$
 $L = 437.31'$

PL CURVE
 $\Delta = 43^\circ 34' 30''$
 $R = 308.77'$
 $L = 234.83'$

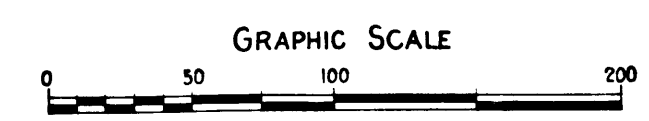
PL CURVE
 $\Delta = 27^\circ 35' 50''$
 $R = 310'$
 $L = 178.00'$

STATE OF CALIFORNIA
DEPARTMENT OF PUBLIC WORKS
DIVISION OF HIGHWAYS

RIGHT OF WAY MAP

OF
RAMONA BLVD
STA. 77+00 TO STA. 107+00

Superior Court Case No. 425805
Suit for Condemnation
Filed Mar. 9, 1938
People of the State of Cal., Pltff.
Vs
Sam Ivener, et al., Defendants
Case dismissed May 13, 1938.



INDEX 36-43

C.F. 2054-

