

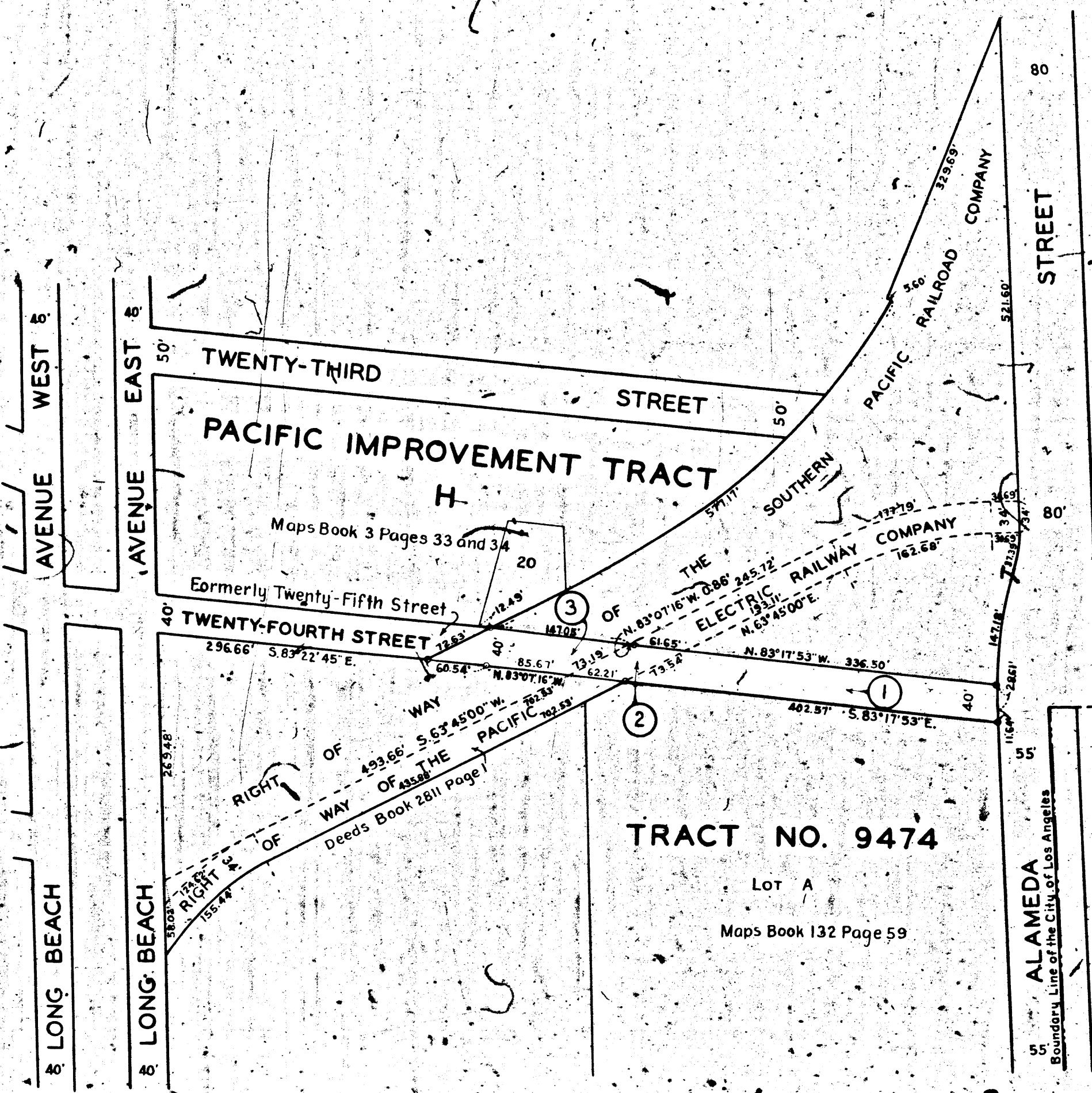
24 TH STREET
ALAMEDA ST. TO A POINT 600' WESTERLY
W.O. 51843

0040-A

0040-A

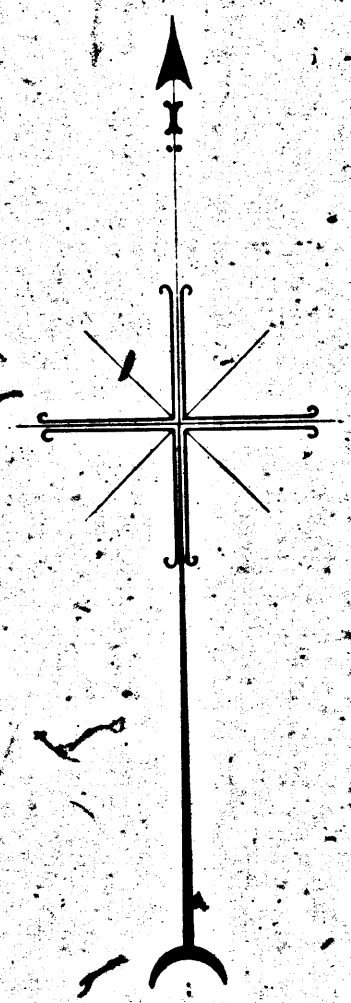
0040-A

0040-A



MAP
FOR THE
CONDEMNATION OF CERTAIN REAL PROPERTIES FOR THE OPENING OF
TWENTY-FOURTH STREET
(FORMERLY TWENTY-FIFTH STREET)
BETWEEN ALAMEDA STREET AND THE PRESENT EASTERLY TERMINUS
OF SAID TWENTY-FOURTH STREET, APPROXIMATELY THREE HUNDRED
FEET EASTERLY OF LONG BEACH AVENUE
IN THE CITY OF LOS ANGELES CAL.
LOYD ALDRICH CITY ENGINEER MARCH 1938
SCALE: 1 INCH = 100 FEET

IN ACCORDANCE WITH ORDINANCE NO. 79433



NOTES
Land to be condemned shown colored red.
Dotted lines and dimensions show holdings where they differ from
recorded subdivisions.
Figures in circles indicate the parcel numbers as set forth in
paragraph IX of the complaint.

Superior Court Case No. 426751
Suit for Condemnation
Filed Apr. 5, 1938
City of Los Angeles, Plaintiff
vs
Pacific Electric Ry. Co., et al, Def.
Case dismissed Sept. 22, 1938.

A-6490
INDEX 7

SUBMITTED	Mar. 29 1938
BY	W. V. Go Colquhoun ENGINEER OF STREET OPENING
APPROVED	March 30 1938 Lloyd Aldrich DEPUTY ENGINEER (DESIGN)
APPROVED	April 1 1938 Lloyd Aldrich CITY ENGINEER

