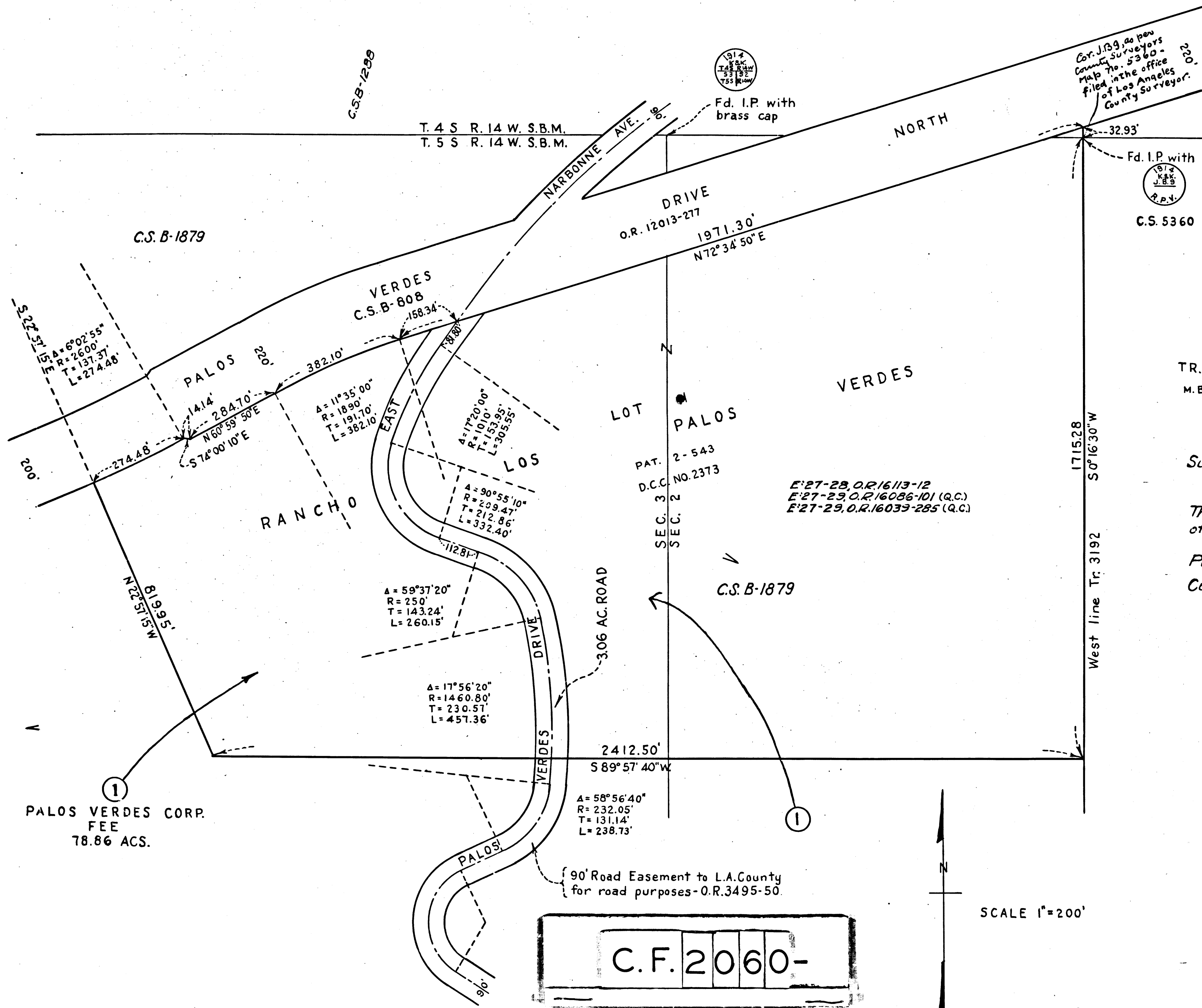


Sh+ 27  
Sh+ 28  
A-116



Superior Court Case No. 430898  
 Suit for Condemnation  
 Filed Aug. 6, 1938  
 The Metropolitan Water District  
 of Southern California, Pltff.  
 Vs  
 Palos Verdes Co., et al., Def.  
 Case dismissed Nov. 7, 1938

COUNTY OF LOS ANGELES			
THE METROPOLITAN WATER DISTRICT OF SOUTHERN CALIFORNIA			
RIGHT OF WAY MAP			
DISTRIBUTION SYSTEM 98TH STREET TO PALOS VERDES RES.			
DRAWN J.P.W.	COMPUTED D.F.M.		
TRACED J.P.W.	CHECKED		
REVISED			
APPROVALS			
CONSTN. ENGINEER	N.B. (R.B.S.)	7-20-38	
DESIGN ENGINEER	GMP	7-22-38	
SUP'T OF CONSTN.			
CHIEF ENGINEER	J. J. J.		
DATE		1413-22	