

Superior Court Case No. 431979
 Suit for Condemnation
 Filed Sept. 13, 1938
 County of Los Angeles, Plaintiff
 Vs
 Mamie Glas, et al., Defendants.
 Case dismissed Dec. 1, 1938

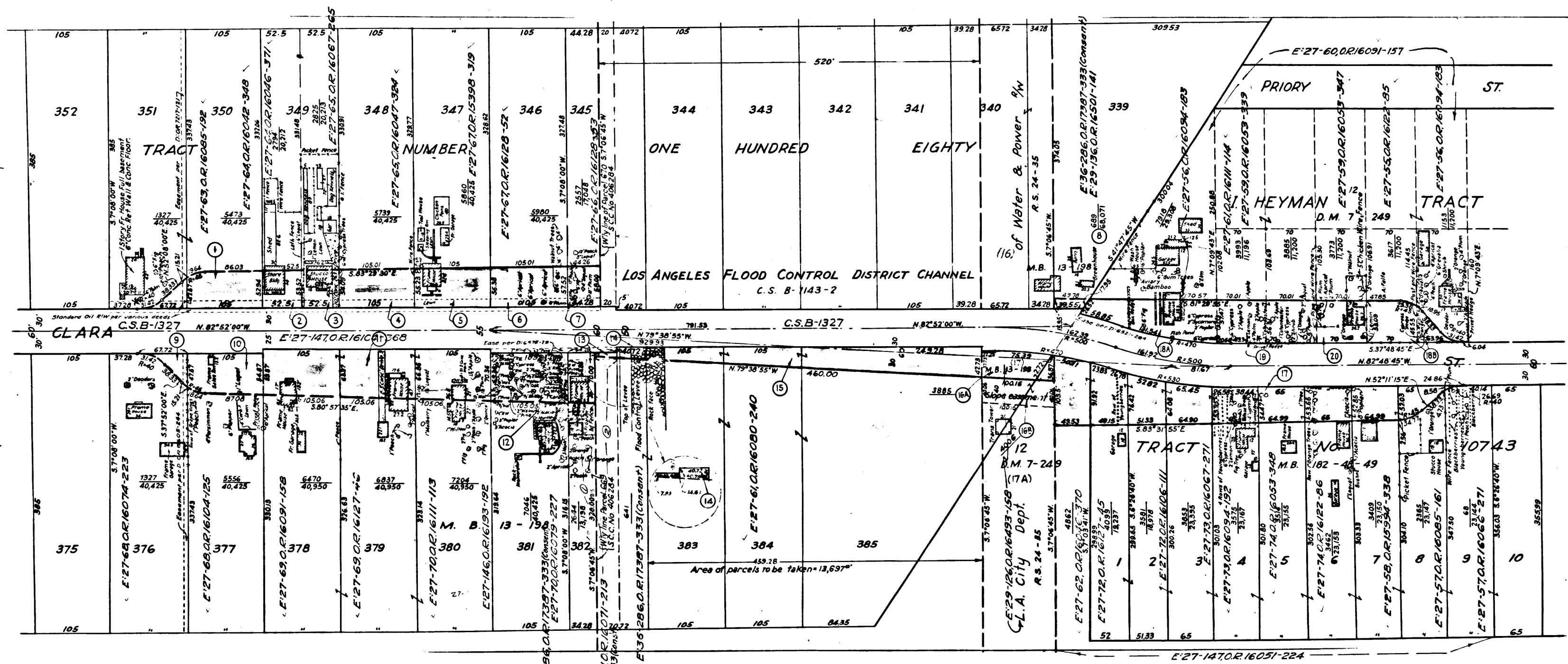
MAP SHOWING
 LAND SOUGHT TO BE ACQUIRED
 FOR THE WIDENING OF
CLARA STREET
 IN ACCORDANCE WITH A RESOLUTION OF THE
 BOARD OF SUPERVISORS OF LOS ANGELES
 COUNTY ADOPTED

ALFRED JONES - COUNTY SURVEYOR
 SCALE 1" = 80'
 JUNE, 1938.

LEGEND
 LAND SOUGHT TO BE ACQUIRED COLORED RED
 NUMBERS IN CIRCLES INDICATE PARCELS SOUGHT
 TO BE CONDEMNED.
 THE PARCELS ARE DESCRIBED IN PARAGRAPH
 OF THE COMPLAINT.
 FIGURES SHOWN THUS 0.000 INDICATES AREA OF PARCEL IN SQ. FT.
 00.000 INDICATES AREA OF HOLDING IN SQ. FT.

EXHIBIT "A"

INDEX 36					
DRAWN BY	DATE	CALCULATED BY	DATE	COMPLETED BY	DATE
C.E. Drown	5-16-38	Silverman	5-16-38	Green	5-31-38
V. Lunt	5-17-38	Green	5-19-38	V. Lunt	5-31-38
INDEX MAP NO.	36 (20)	SUPERVISORIAL DISTRICT NO.			
CO. SURV.		NO. 116			
ASSESSOR'S BOOK NO.	316	C.E. MAP NO.			
H. BOOK	PAGE	MAP NO.			
LOCATION: E. of City of Bell					
CROSS REFERENCES: 266 No. 434					



C.F. 2061-