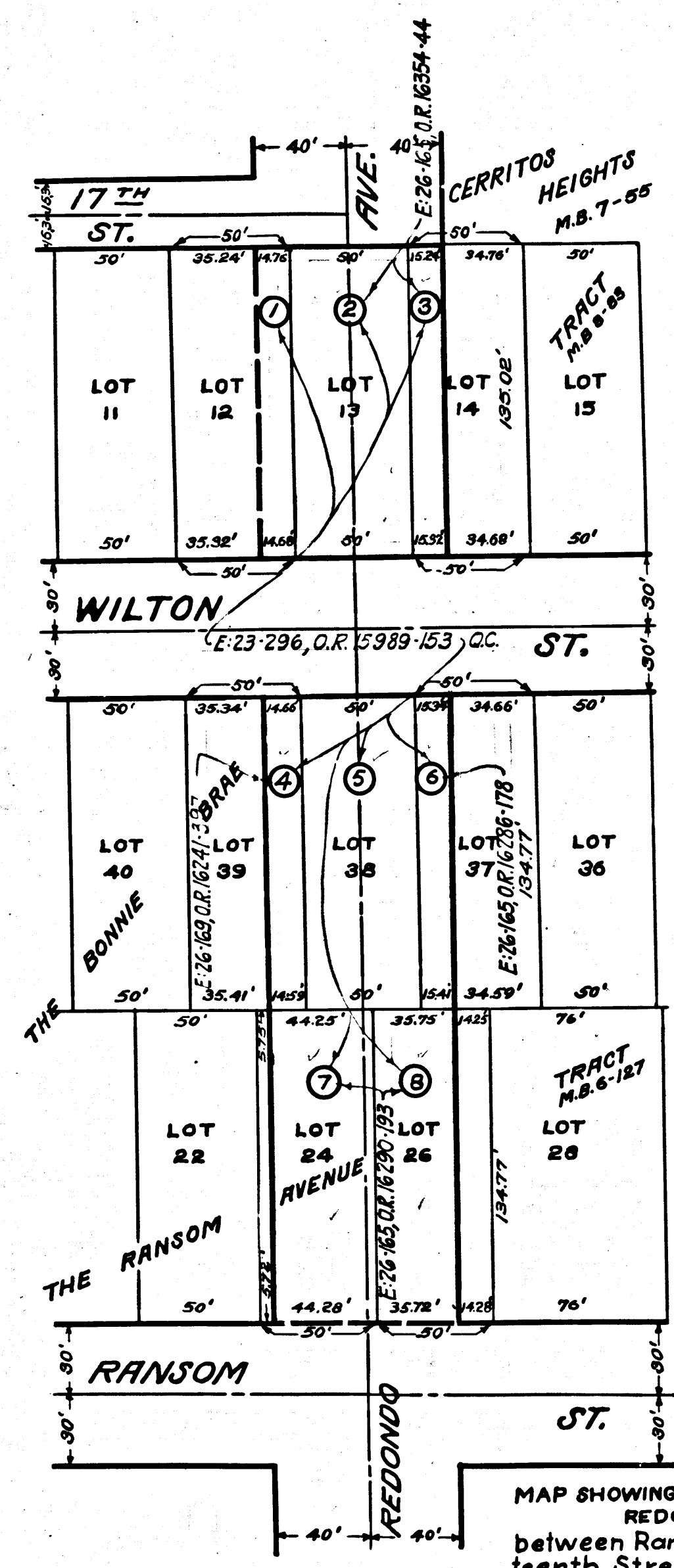


Sht-30  
A-184



MAP SHOWING OPENING & EXTENDING OF  
REDONDO AVENUE  
between Ransom Street and Seven-  
teenth Street in the City of Long  
Beach, California.  
Red tint shows lands over, upon  
and across which an easement  
for public street purposes is sought.

EXHIBIT "A"

INDEX 30  
 Superior Court Case No. L.B.C. 8809  
 Suit for Condemnation  
 Filed Sept. 21, 1938  
 City of Long Beach, Plaintiff  
 Vs  
 Anna M. Archer, et al., Def.  
 Final judgment in favor of Pltff. as per map.  
 rendered Oct. 18<sup>th</sup> 1940.  
 E: 40-272, O.R. 17903-290

C.F. 2065-

2605211 PAM E317 2K3E1J C CERRITOS HEIGHTS M.B. 7-55 SUPERIOR COURT CASE L.B.C. 8809