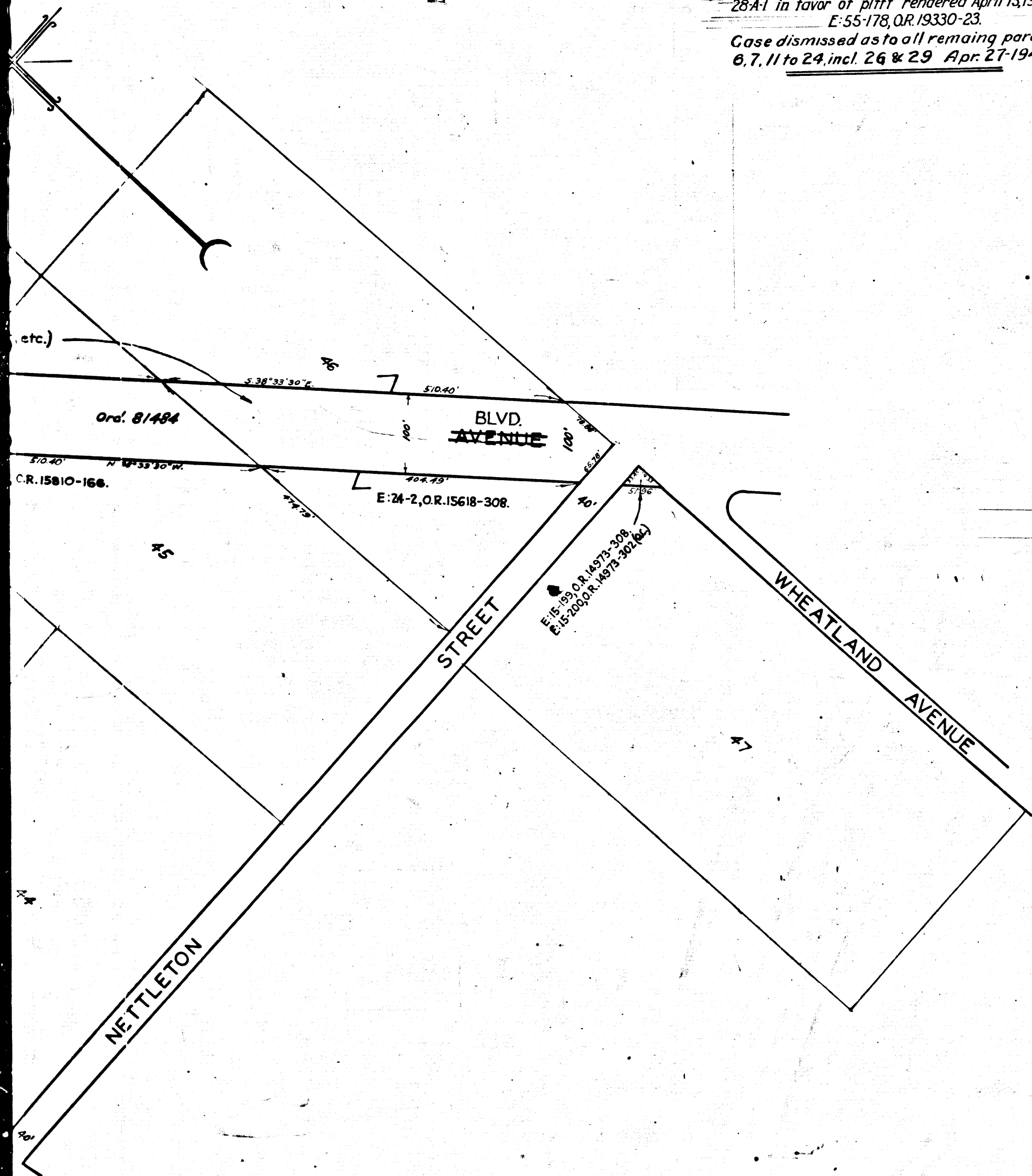


Superior Court Case No. 434039
 Suit for Condemnation
 Filed Nov. 22, 1938
 City of Los Angeles, Plaintiff
 Vs
 Clara S. Lyons, et al., Defendants.
 Interlocutory judgment as to parcel
 25, rendered Nov. 24, 1939. J.B. 1039-189.
 Int. judg. as to parcels 28 and 28A1,
 rendered Dec. 13, 1939. J.B. 1050-252.
 Int. judg. as to parcel 27, rendered
 Feb. 7, 1940. J.B. 1059-240.
 Final judgment as to parcels 25, 27, 28 &
 28A1 in favor of plttf rendered April 15, 1942
 E:55-178, O.R. 19330-23.
 Case dismissed as to all remaining parcels
 6, 7, 11 to 24, incl. 26 & 29 Apr. 27-1942

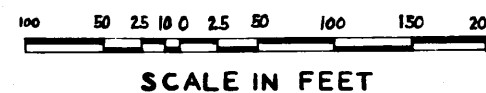
REMSEN AVE.-N.C.B. OF BURBANK TO TUXFORD ST.
 CHARGE NO. 80382 CLERK'S FILE NO. 1685-37

V-0233-A



MAP
 SHOWING LAND TO BE CONDEMNED
 FOR THE
 OPENING AND EXTENDING OF
GLENOAKS REMSEN AVENUE BLVD. Ord. 81485
 FROM A POINT APPROXIMATELY SIX HUNDRED FEET SOUTHEASTERLY
 OF VINEDALE STREET TO A POINT IN VINEDALE STREET APPROXIMATELY
 THREE HUNDRED FEET EASTERLY OF SUNLAND BOULEVARD
 ALSO FOR THE WIDENING OF
GLENOAKS REMSEN AVENUE BLVD. Ord. 81485
 BETWEEN SUNLAND BOULEVARD AND TUXFORD STREET
 IN THE CITY OF LOS ANGELES CALIFORNIA
 LLOYD ALDRICH-CITY ENGINEER JULY 1938

IN ACCORDANCE WITH ORDINANCE NO. 79995



INDEX 52-53

Notes
 Land to be condemned for public street purposes shown colored red
 Dotted lines and dimensions show property holdings in those cases where
 they differ from recorded subdivisions
 Figures in circles indicate the parcels as set forth in paragraph XIII
 of the complaint

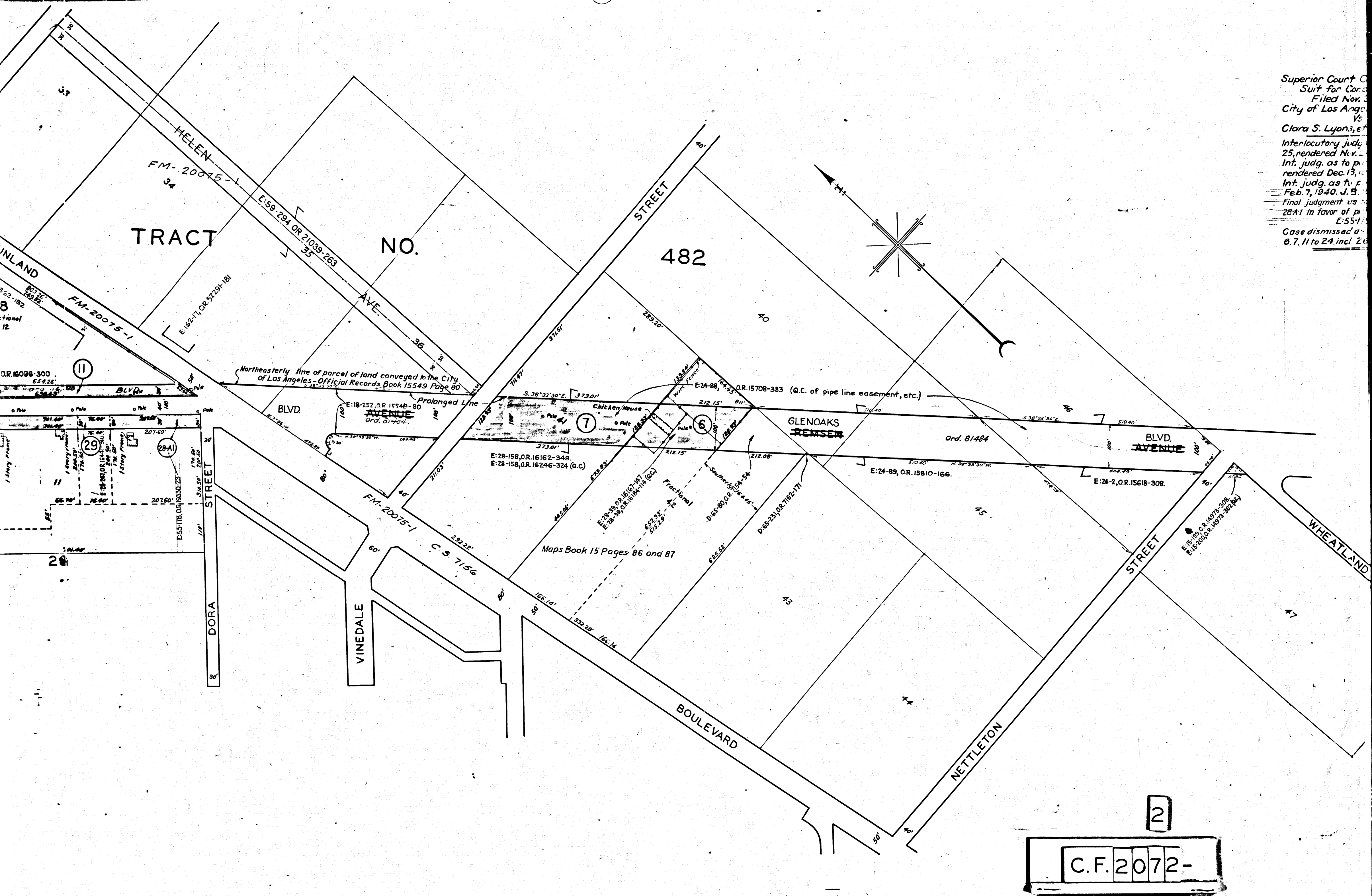
Dist. of Hwy. No.	Improvement of
Remsen Ave. - N.C.B. of Burbank to Tuxford St.	
Order No. 80382	
Charge No. 1685-37	Dist. Map V-1078
Div. Index 1078	
Drains required Aug 23, 1938	By
Traced Snellson	Drawn Cld. Koster
1938	Div. Dist. Engr. E. H. [Signature]
Aug 24, 1938	Deputy Engr. [Signature]
Aug 25, 1938	City Engineer Lloyd Aldrich

A-6532

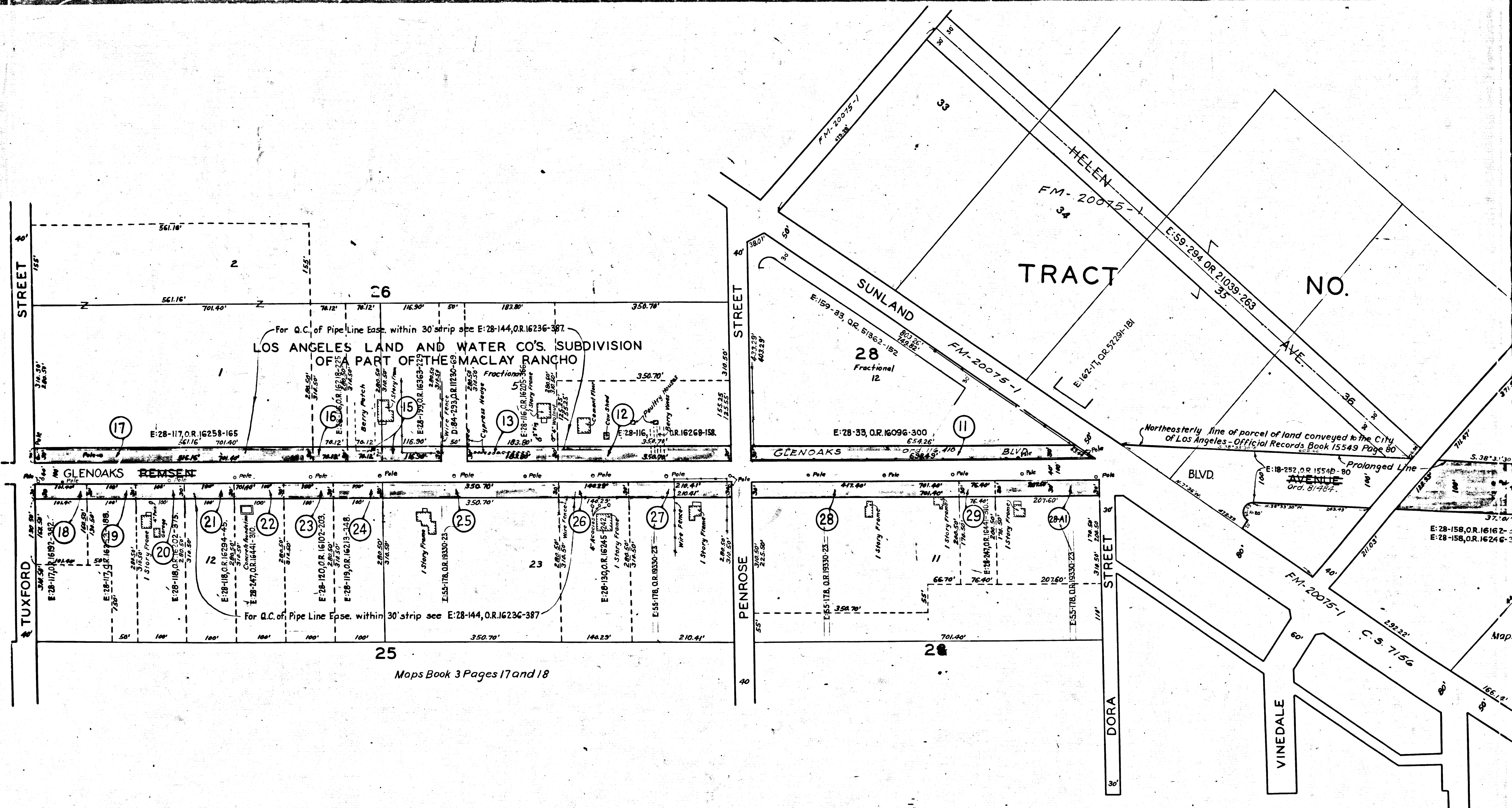
C.F. 2072-

V-0233-A

Superior Court of California
 Suit for Condemnation
 Filed Nov. 25, 1939
 City of Los Angeles
 Vs.
 Clara S. Lyons, et al.
 Interlocutory judgment rendered Nov. 25, 1939, as to parcels 25, 26, 27, 28, 29, 30, 31, 32, 33, 34, 35, 36, 37, 38, 39, 40, 41, 42, 43, 44, 45, 46, 47, 48, 49, 50, 51, 52, 53, 54, 55, 56, 57, 58, 59, 60, 61, 62, 63, 64, 65, 66, 67, 68, 69, 70, 71, 72, 73, 74, 75, 76, 77, 78, 79, 80, 81, 82, 83, 84, 85, 86, 87, 88, 89, 90, 91, 92, 93, 94, 95, 96, 97, 98, 99, 100.
 Final judgment rendered Dec. 13, 1939, as to parcels 25, 26, 27, 28, 29, 30, 31, 32, 33, 34, 35, 36, 37, 38, 39, 40, 41, 42, 43, 44, 45, 46, 47, 48, 49, 50, 51, 52, 53, 54, 55, 56, 57, 58, 59, 60, 61, 62, 63, 64, 65, 66, 67, 68, 69, 70, 71, 72, 73, 74, 75, 76, 77, 78, 79, 80, 81, 82, 83, 84, 85, 86, 87, 88, 89, 90, 91, 92, 93, 94, 95, 96, 97, 98, 99, 100.
 Case dismissed as to parcels 28A1, 28A2, 28A3, 28A4, 28A5, 28A6, 28A7, 28A8, 28A9, 28A10, 28A11, 28A12, 28A13, 28A14, 28A15, 28A16, 28A17, 28A18, 28A19, 28A20, 28A21, 28A22, 28A23, 28A24, 28A25, 28A26, 28A27, 28A28, 28A29, 28A30, 28A31, 28A32, 28A33, 28A34, 28A35, 28A36, 28A37, 28A38, 28A39, 28A40, 28A41, 28A42, 28A43, 28A44, 28A45, 28A46, 28A47, 28A48, 28A49, 28A50, 28A51, 28A52, 28A53, 28A54, 28A55, 28A56, 28A57, 28A58, 28A59, 28A60, 28A61, 28A62, 28A63, 28A64, 28A65, 28A66, 28A67, 28A68, 28A69, 28A70, 28A71, 28A72, 28A73, 28A74, 28A75, 28A76, 28A77, 28A78, 28A79, 28A80, 28A81, 28A82, 28A83, 28A84, 28A85, 28A86, 28A87, 28A88, 28A89, 28A90, 28A91, 28A92, 28A93, 28A94, 28A95, 28A96, 28A97, 28A98, 28A99, 28A100.



2
 C.F. 2072-



Maps Book 3 Pages 17 and 18

3

C.F. 2072-