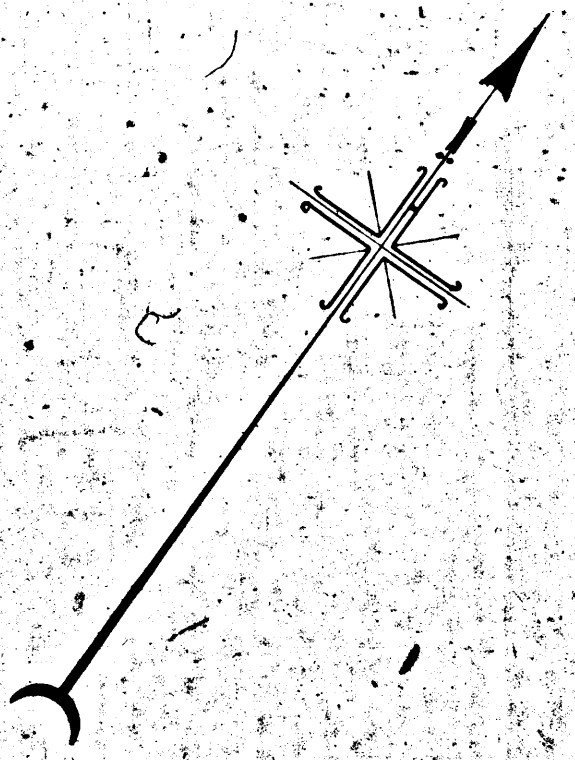
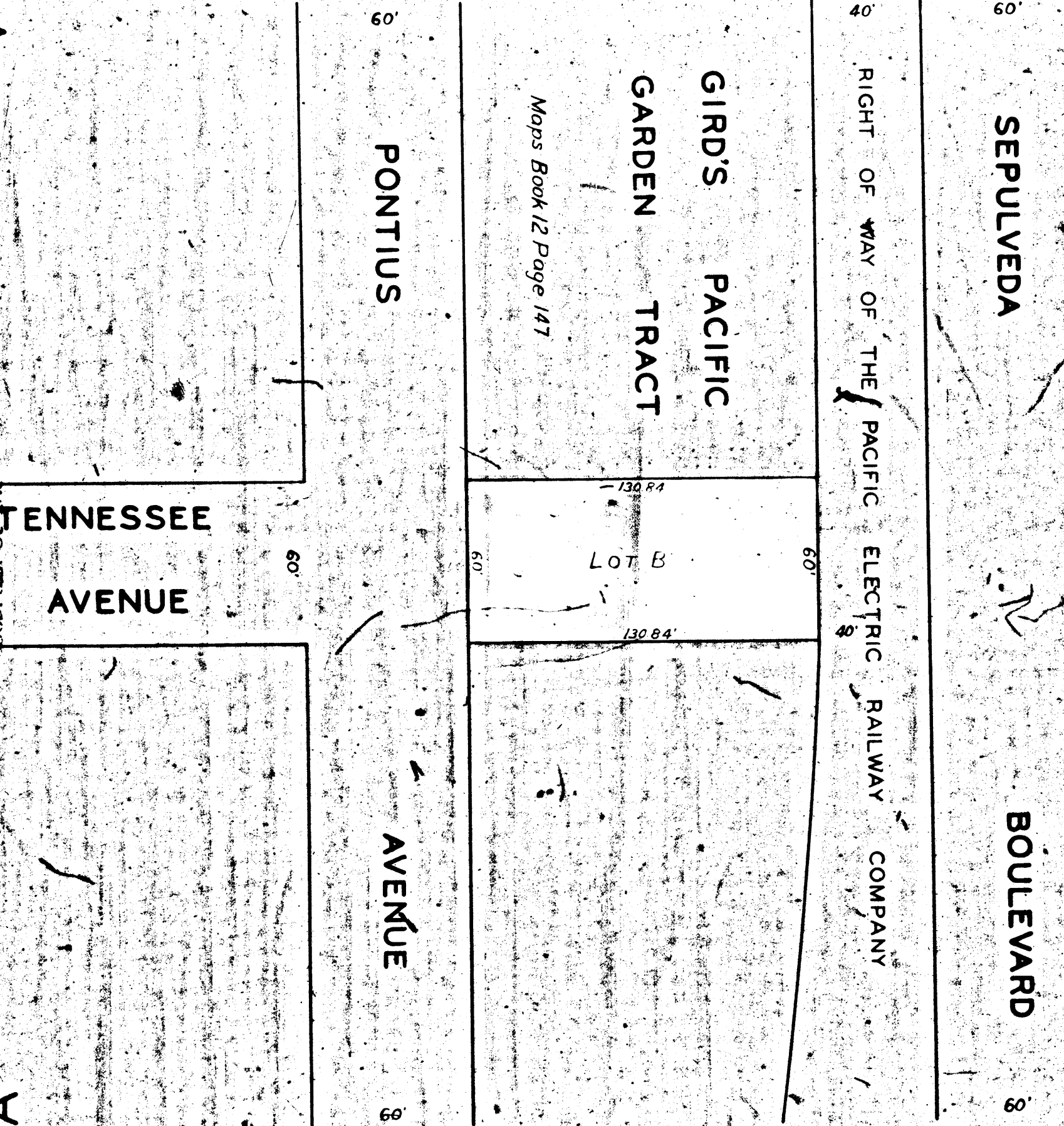


0220-A

A-0230

APPROVED FOR THE CITY ENGINEER'S OFFICE
JANUARY 20 1939
CITY OF LOS ANGELES



MAP
SHOWING LAND TO BE CONDEMNED
FOR THE OPENING AND EXTENDING OF
TENNESSEE AVENUE

FROM PONTIUS AVENUE TO THE SOUTHWESTERLY LINE OF
THE RIGHT-OF-WAY OF THE PACIFIC ELECTRIC RAILWAY
COMPANY APPROXIMATELY 130 FEET NORTHEASTERLY
OF PONTIUS AVENUE

IN THE
CITY OF LOS ANGELES, CALIFORNIA

LLOYD ALDRICH-CITY ENGINEER. MAY 1938.

IN ACCORDANCE WITH ORDINANCE NO. 79656
SCALE: 1 INCH=40 FEET

*Superior Court Case No. 434841
Suit for Condemnation
Filed Dec. 20, 1938
City of Los Angeles, Plaintiff
Vs
James Gordon Duff, et al., Def.
Interlocutory judgment as per
map, rendered Apr. 6, 1939.
J. B. 1017-261.
Final Judgment in favor of Plaintiff as
per map, rendered May 8th, 1939.*

E-31-23, O.R. 16544-349.

Note
Land to be condemned shown colored red

INDEX 21

Right of Way No.	4814	Improvement of
Tennessee Ave. - Sepulveda Blvd. to Pontius Ave.		
	Order No.	79722
Clerk's File	1568-38	Dist. Map 7199
	Div. Index	1236
Sewers/Storm Drains	required	Dec. 13, 1938
Calc.	Traced	Snelson
Submitted	Dec. 12, 1938	Div. Dist. Engr. E.H. Galloway
Submitted	Dec. 14, 1938	Deputy Engr. Merrill G. Smith
Approved	Dec. 16, 1938	City Engineer Lloyd Aldrich

A-6536

0220-A

A-0230

APPROVED FOR THE CITY ENGINEER'S OFFICE
CITY OF LOS ANGELES
JANUARY 20 1939