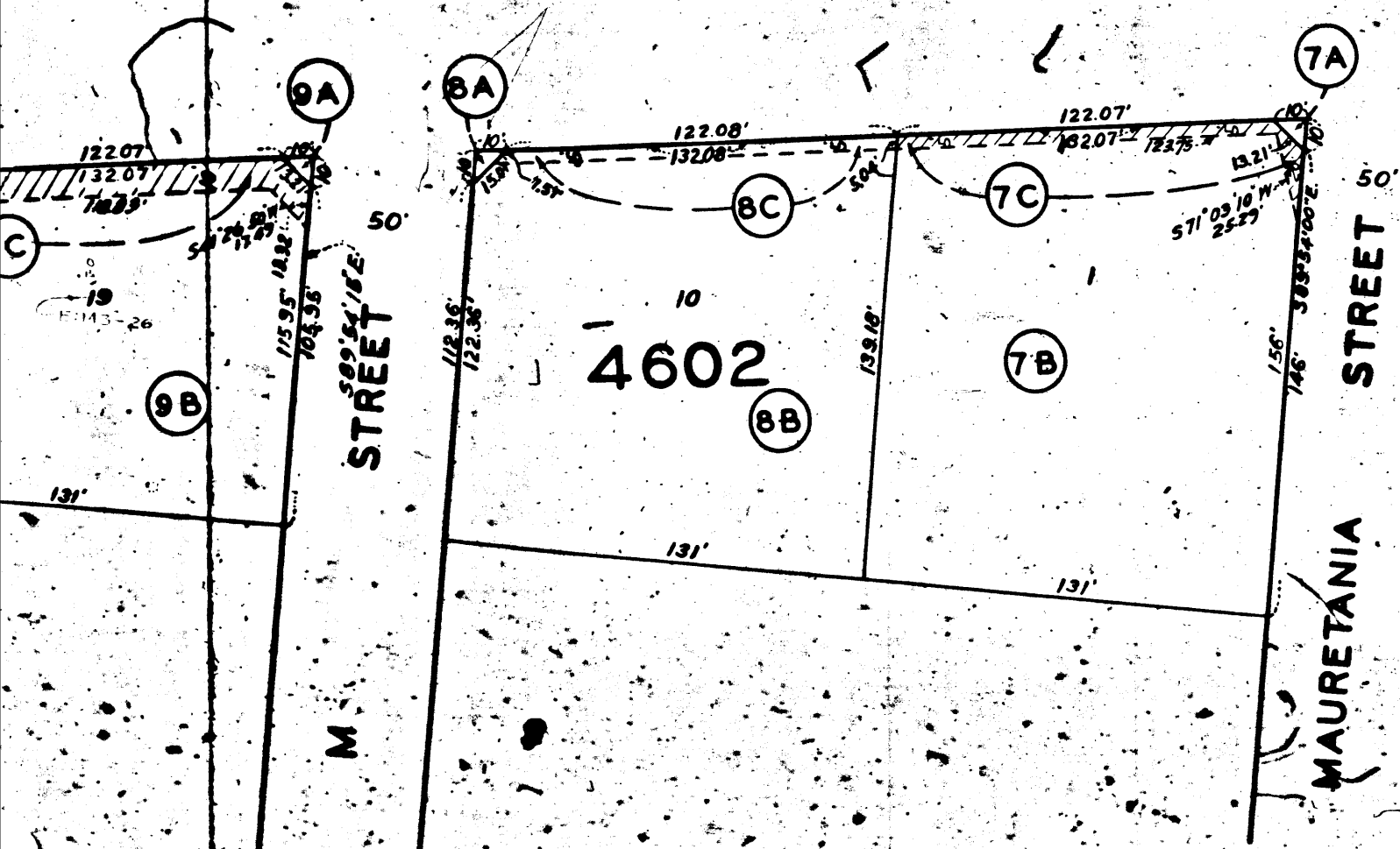


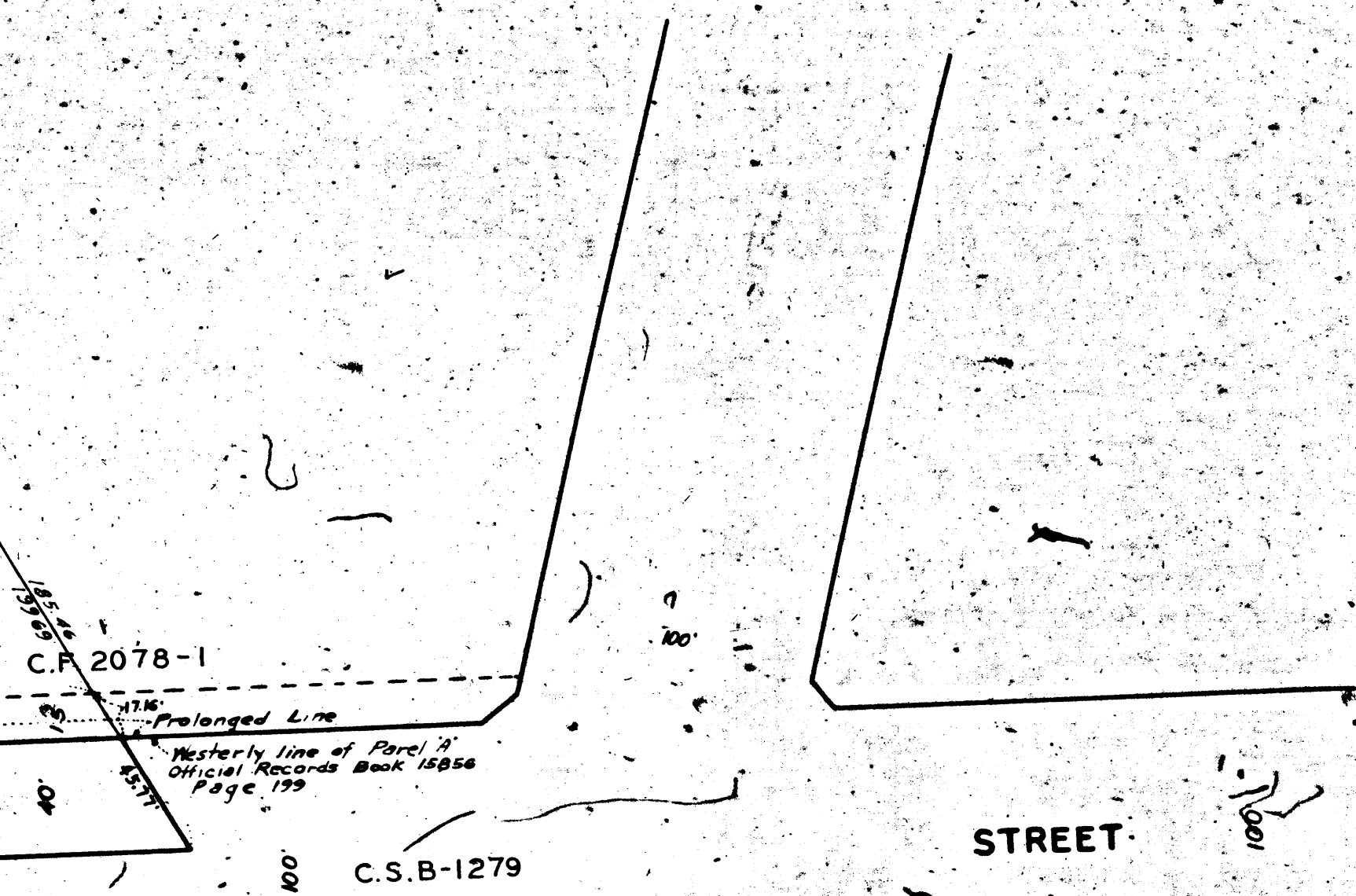
SUBDIVISION
PARTITION OF THE RANCHO LOS PALOS VERDES

Map No. 2373
Map No. 141
Marginal Streets above

5'E
15' W



TRACT
NO.
ALLEY



C.F. 2078-1

Westerly line of Parcel 2
Official Records Book 15856
Page 179

C.S.B-1279

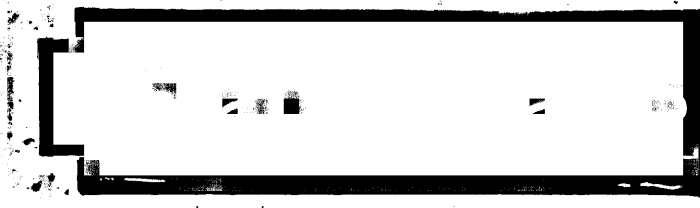
STREET

Property of the City of Los Angeles
Official Records Book 12934 Page 269

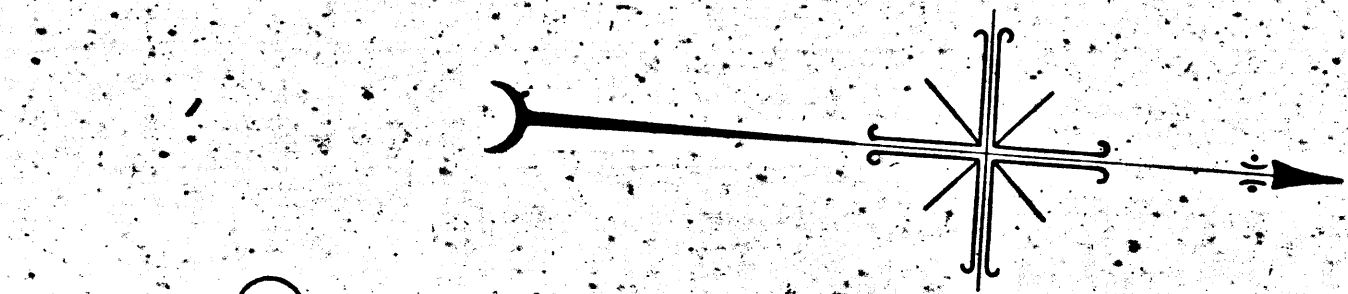
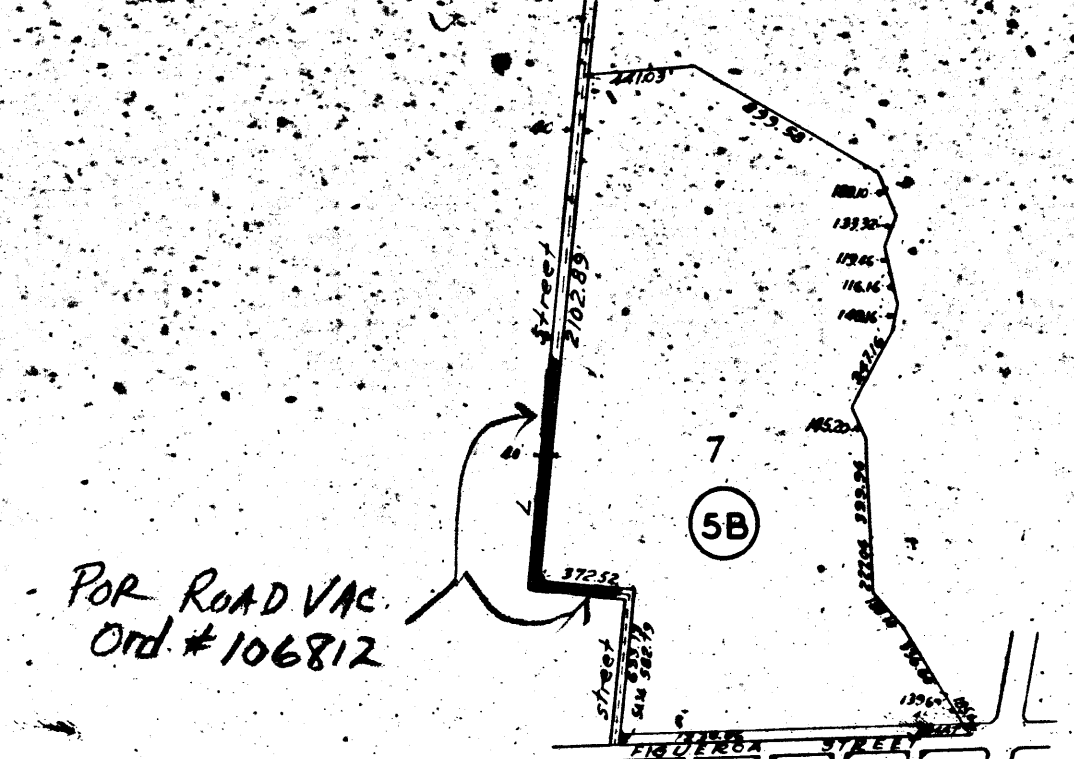
Maps Book 170 Pages 16 and 17

For continuation see sheet 1

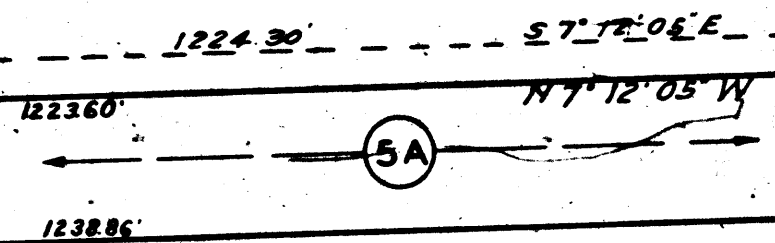
INDEX 28



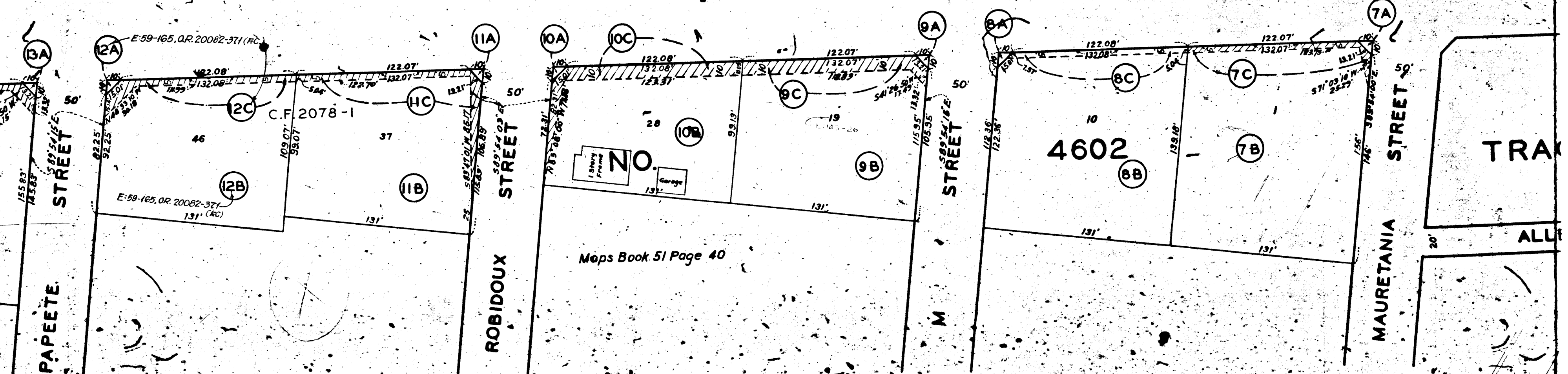
MARGINAL SKETCH
Not to Scale



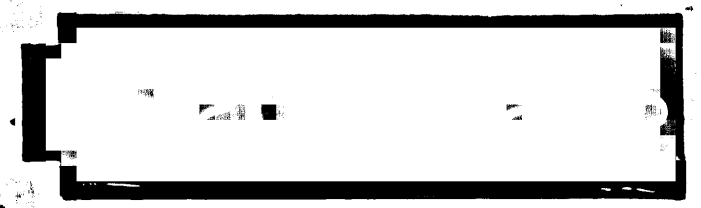
PECK'S SUBDIVISION
(OF LOT J AND PORTION OF LOT H OF THE PARTITION OF THE RANCHO LOS PALOS VERDES)
District Court Case No. 2373
Recorder's Filed Map No. 141
For entire Parcel see Marginal sketch above



FIGUEROA TRACT
C.S.B-1279



Maps Book 51 Page 40



VJ-813

VJ-813

PLANNING AND ENGINEERING SERVICE
CITY OF LOS ANGELES
PROFESSIONAL SEAL

For continuation see sheet 3

STREET

C.S.B-1279

FIGUEROA

TRACT

PAPEETE STREET

(OF LOT 4 AND POR

FOR ROAD VAC.
Ord # 106812

MARGI
Not

