

92

STREET

C.S.B-1279

N. 5° 32' 09" W. 15.53'

595.88' Radius = 1943.69'

S. 35° 46' 23" W. 12.61'

142.53' Radius = 2043.69'

N. 86° 40' 35" E.

AVENUE

RESUBDIVISION OF
A PORTION OF BLOCK A RANGE 5
WILMINGTON CALIFORNIA

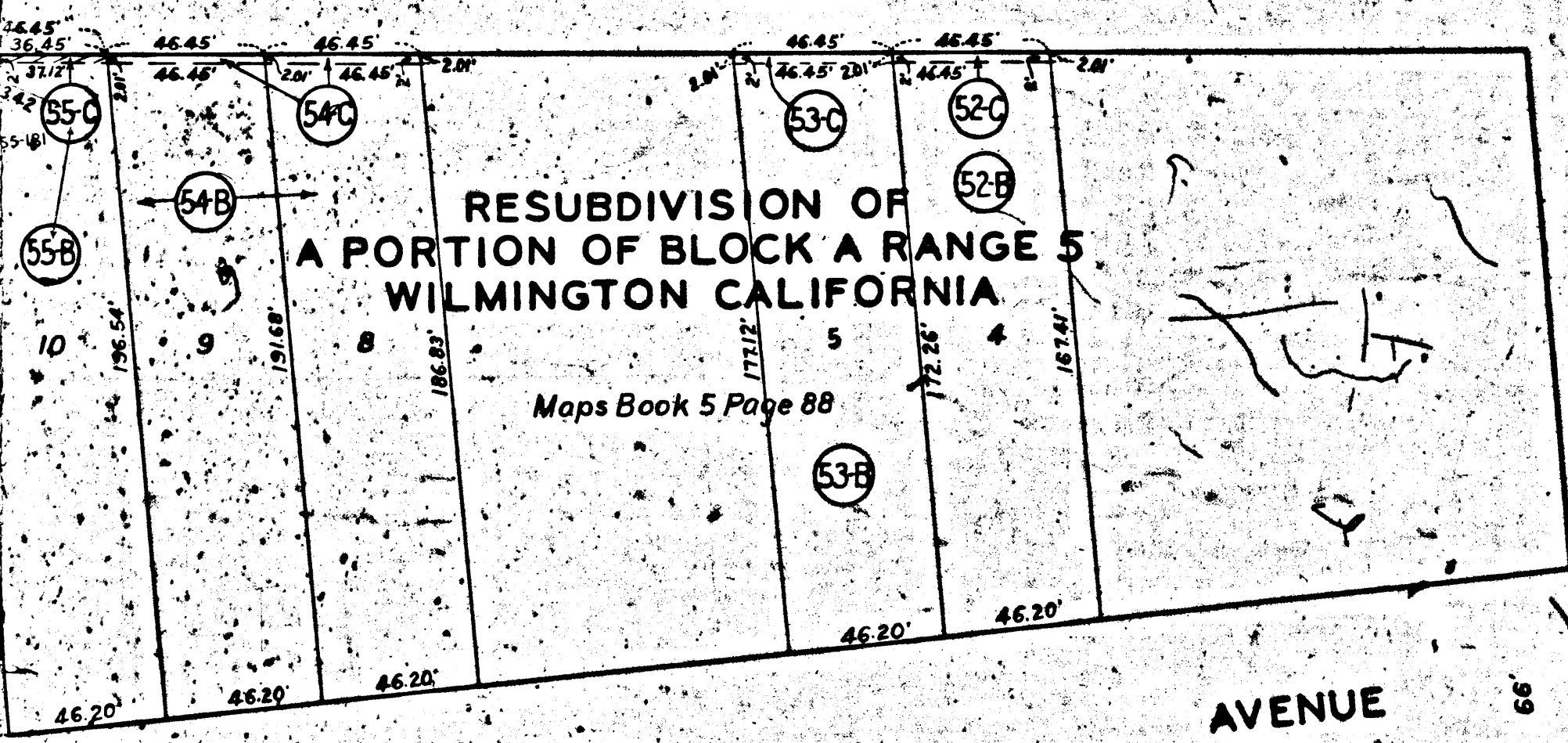
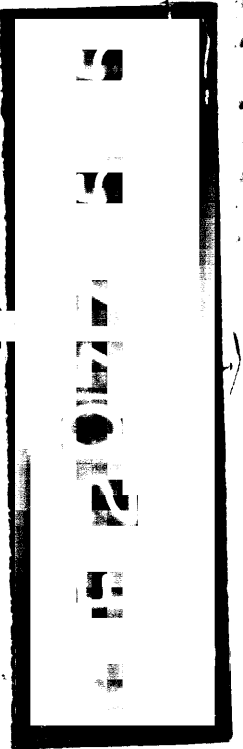
Maps Book 5 Page 88

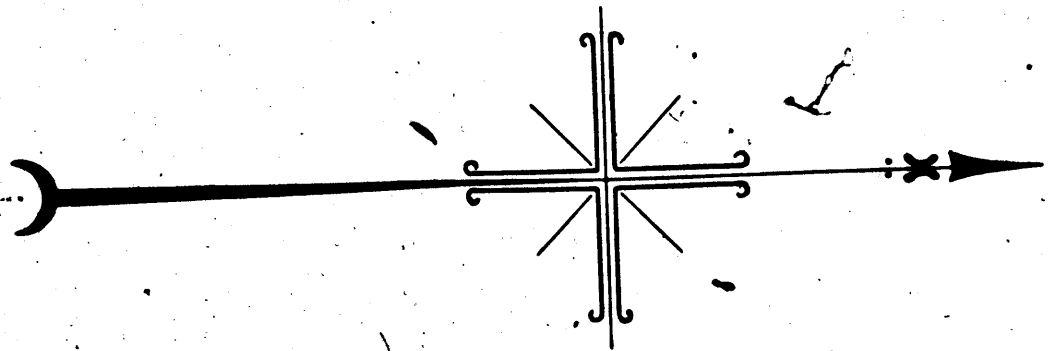
INDEX 28

AVENUE

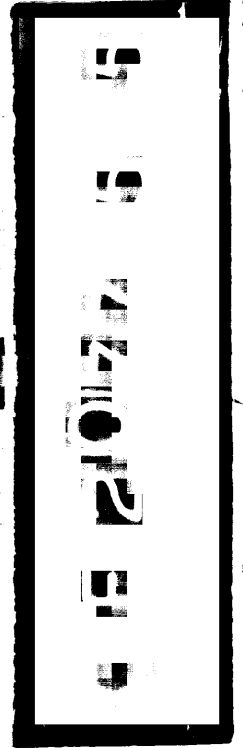
MAR VISTA

For Continuation See Sheet No. 4





2



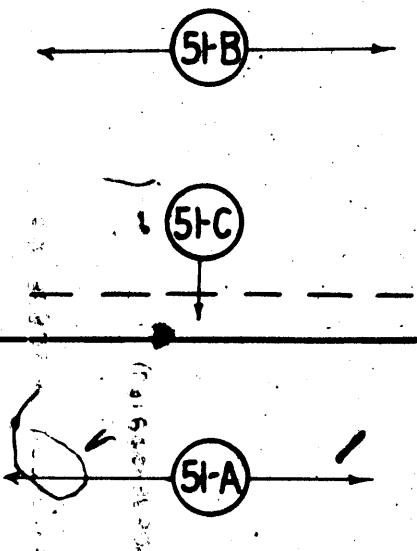
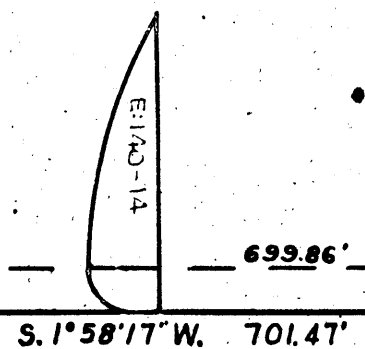
TRACT

NO.

3192

Maps Book 44 Pages 91 to 94 (Both inclusive)

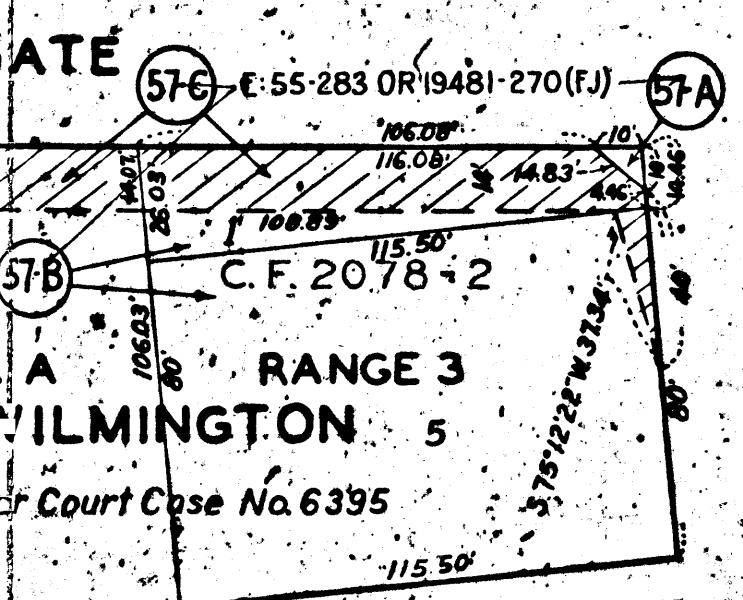
9



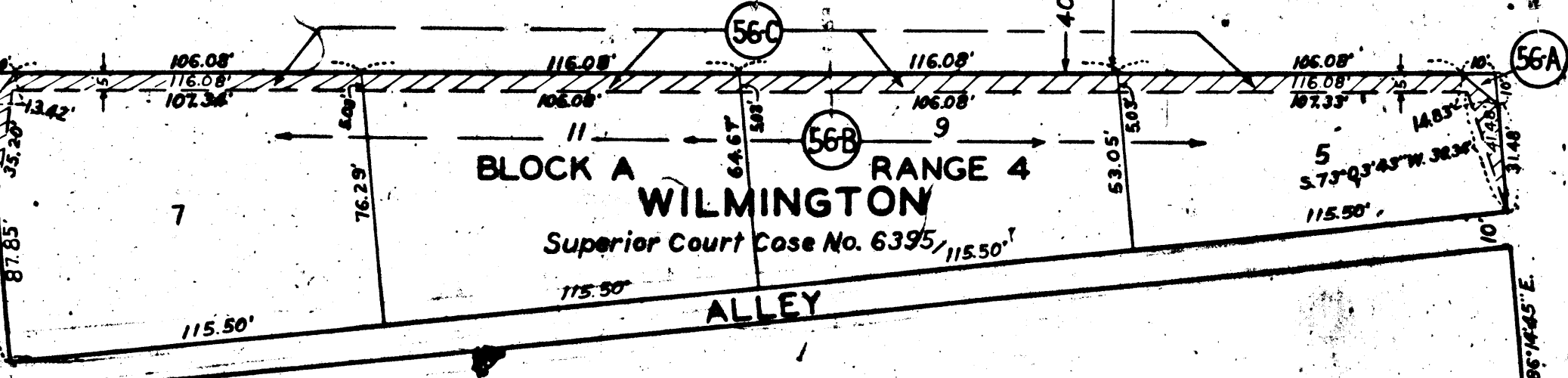
C.S.B-1279

S. 1° 58' 17" W. 701.47'

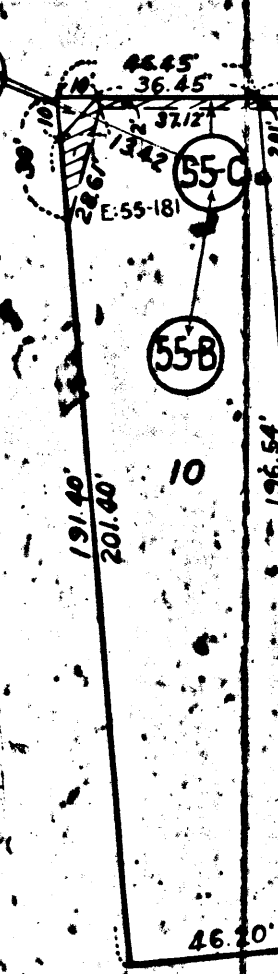
N. 1° 58' 17" E. 1150.13'



STREET



STREET



N. 86° 14' 50" E.

N. 85° 44' 45" E.

C

D

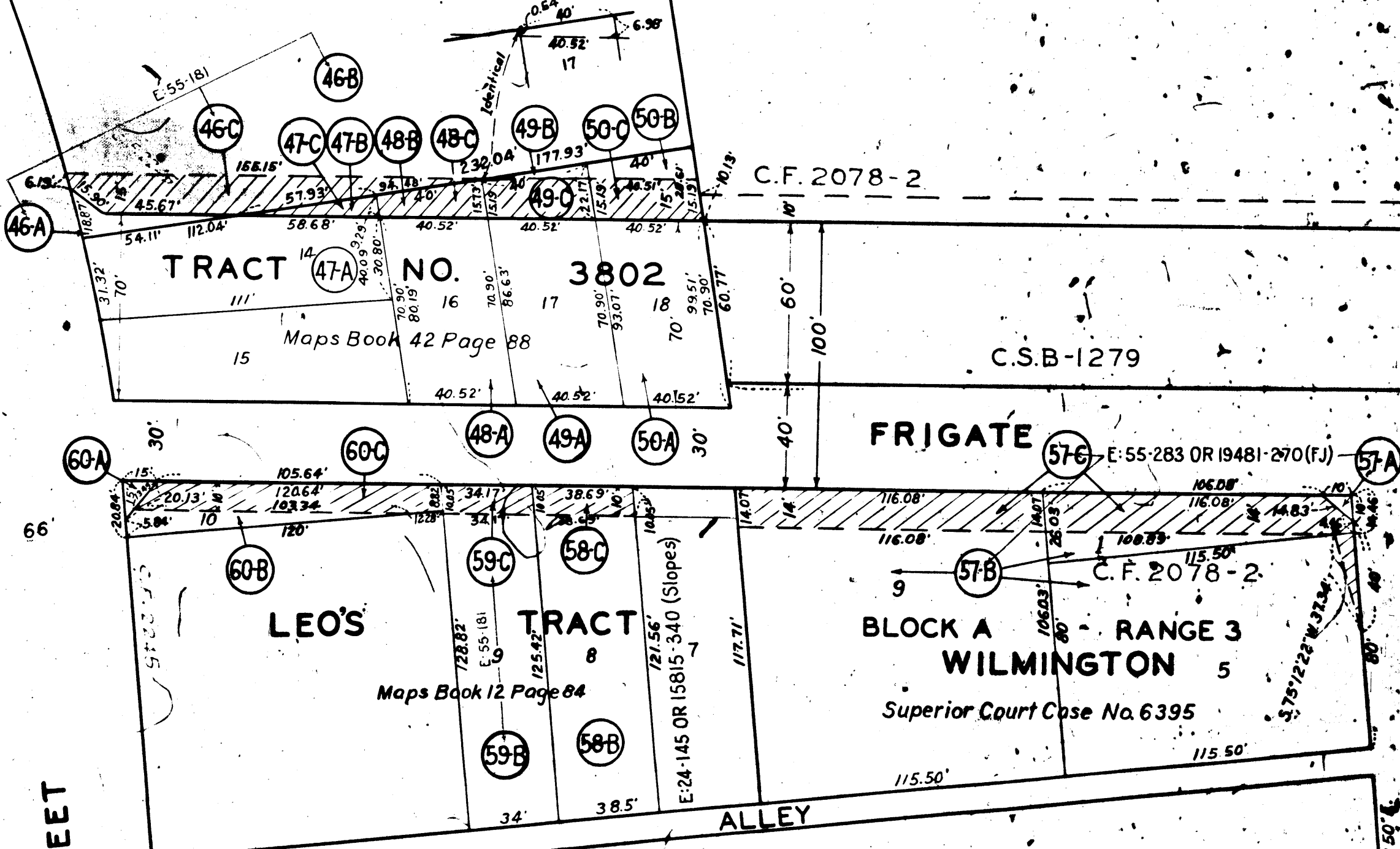
SEE MARGINAL SKETCH

15 2077 15 5

PARTITION OF THE RANCHO LOS PALOS VERDES

Deeds Book 1191 Page 297
District Court Case No. 2373
Part of Lot L

WILMINGTON AND SAN PEDRO ROAD



STREET

B

FRIGATE BLOCK A RANGE 3 WILMINGTON Superior Court Case No. 6395

LEO'S TRACT Maps Book 12 Page 84

TRACT NO. 3802 Maps Book 42 Page 88

C.F. 2078-2

C.S.B-1279

ALLEY

STREET

VF-813

VF-813



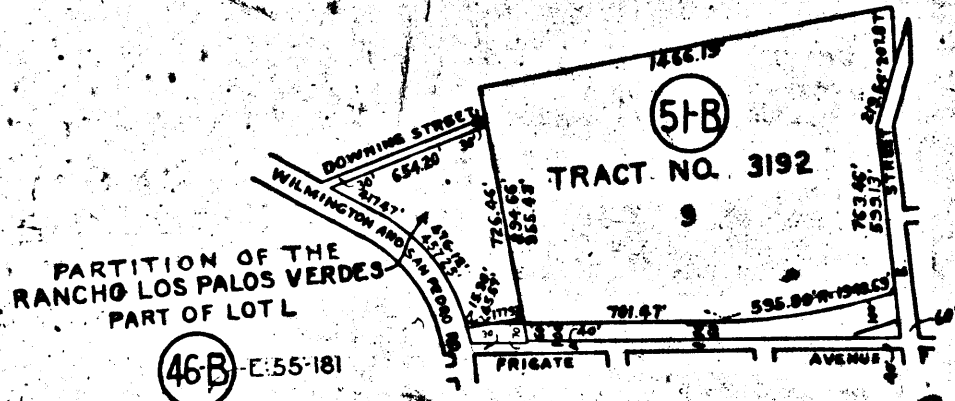
SEE MARGINAL

PARTITION OF THE RANCHO LOS PALOS VERDES

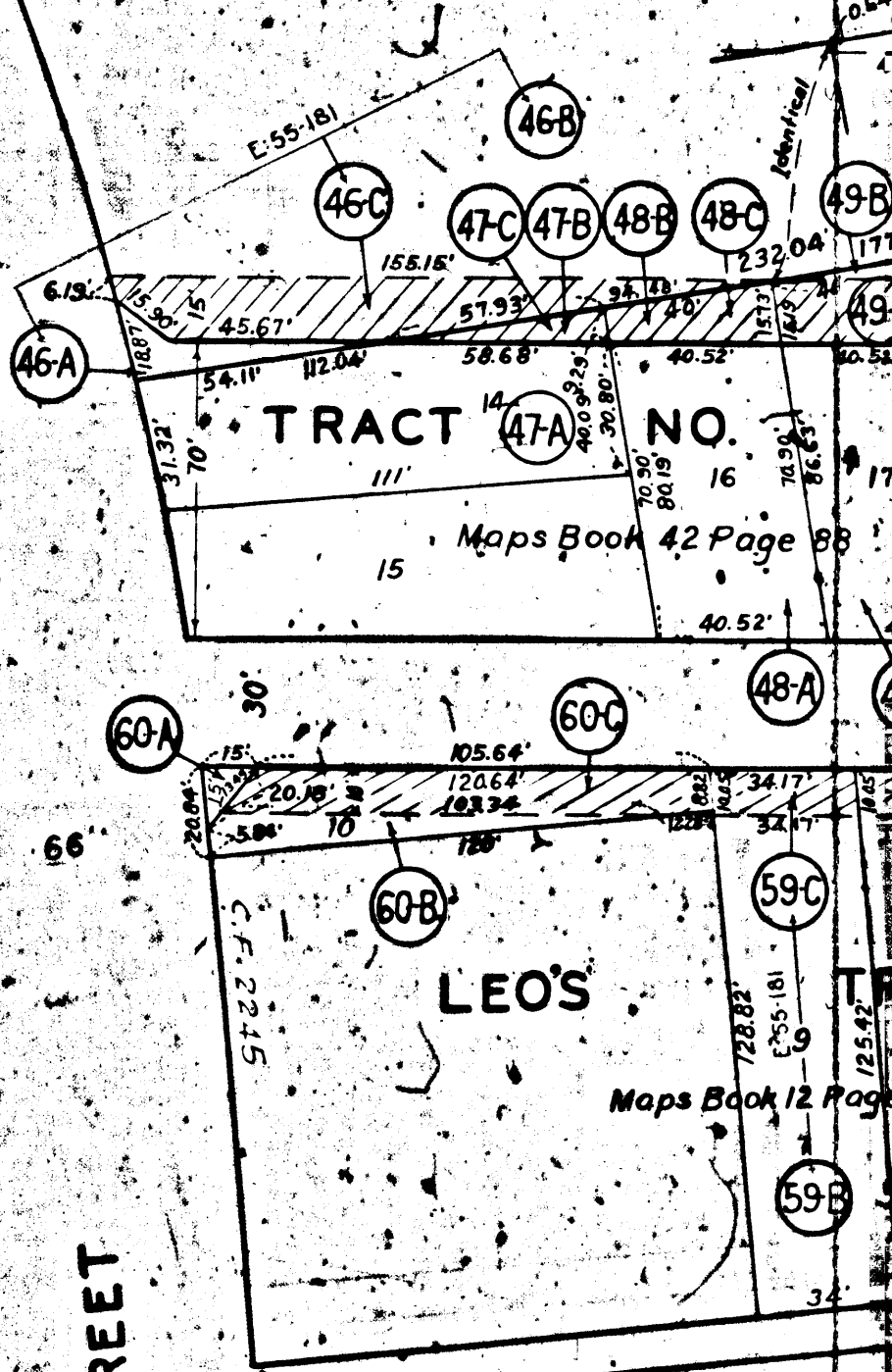
Deeds Book 1191, Page 297

District Court Case No. 2373

Part of Lot L



MARGINAL SKETCH
No Scale



LEO'S

Maps Book 12 Page