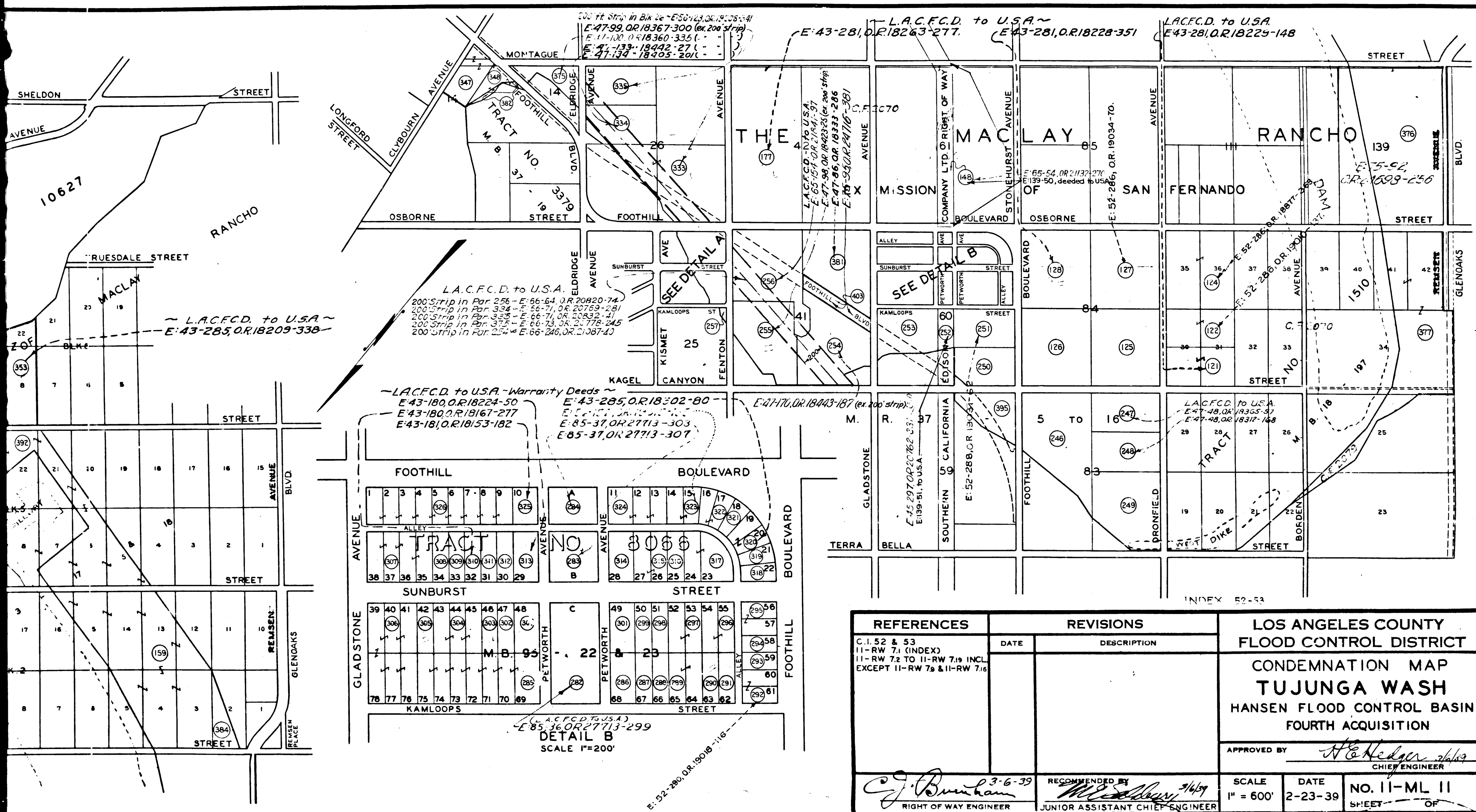


See C.S.B. 1880-19



REFERENCES	REVISIONS	LOS ANGELES COUNTY FLOOD CONTROL DISTRICT		
C.I. 52 & 53 11-RW 7.1 (INDEX) 11-RW 7.2 to 11-RW 7.19 INCL EXCEPT 11-RW 7.9 & 11-RW 7.16	DATE DESCRIPTION	CONDEMNATION MAP TUJUNGA WASH HANSEN FLOOD CONTROL BASIN FOURTH ACQUISITION		
APPROVED BY: <i>H. C. Hedger</i> CHIEF ENGINEER		SCALE 1" = 600'	DATE 2-23-39	NO. 11-ML 11 SHEET OF
RECOMMENDED BY: <i>C. J. Bonham</i> JUNIOR ASSISTANT CHIEF ENGINEER				

Superior Court Case No. 437751
 Suit for Condemnation
 Filed Apr. 1939
 L.A. Co. Flood Control Dist., Plff.
 vs
 Stanley M. Collum, et al., Def.
 Int. judg. as to parcel 343, rendered
 Apr. 5, 1939, J.B. 1017-254.
 Int. judg. as to parcels 245, 336 + 338,
 rendered May 3, 1939, J.B. 1023-111.
 Int. judg. as to parcel 1, 255, rendered
 May 17, 1939, J.B. 1027-332.
 Int. judg. as to parcels 214, 238, 278,
 291, 334, 337 and 372, rendered
 May 25, 1939, J.B. 1027-120.
 Int. judg. as to parcels 329, 330, 331, 332, 333, 334,
 rendered June 12, 1939, J.B. 1033-188.
 Int. judg. as to parcels 124, 238 + 353,
 rendered June 19, 1939, J.B. 1023-218.
 Int. judg. as to parcels 172, 186, 192,
 231, 232, 243, 244, 254, 256, 375, 381
 and 386, rendered June 24, 1939, J.B. 1019-147.
 Int. judg. as to parcels 124 and 353,
 rendered June 24, 1939, J.B. 1024-
 184 and J.B. 1035-105, resp.
 Int. judg. as to parcels 183, 185, 271
 + 273, rendered July 21, 1939, J.B. 1033-120.
 Int. judg. as to parcels 297, 303, 305, 310, 311
 + 324, rendered July 21, 1939, J.B. 1036-120.
 Int. judg. as to parcels 303, 304, 305, 306, 307, 308,
 309, 310, 311, 312, 313, 314, 315, 316,
 317, 318, 319, 320, 321, 322, 323, 324,
 325, 326, 327, 328, 329, 330, 331, 332,
 333, 334, 335, 336, 337, 338, 339, 340,
 341, 342, 343, 344, 345, 346, 347,
 348, 349, 350, 351, 352, 353, 354,
 355, 356, 357, 358, 359, 360, 361, 362,
 363, 364, 365, 366, 367, 368, 369, 370,
 371, 372, 373, 374, 375, 376, 377, 378,
 379, 380, 381, 382, 383, 384, 385, 386,
 387, 388, 389, 390, 391, 392, 393, 394,
 395, 396, 397, 398, 399, 400, 401, 402,
 403, 404, 405, 406, 407, 408, 409, 410,
 411, 412, 413, 414, 415, 416, 417, 418,
 419, 420, 421, 422, 423, 424, 425, 426,
 427, 428, 429, 430, 431, 432, 433, 434,
 435, 436, 437, 438, 439, 440, 441, 442,
 443, 444, 445, 446, 447, 448, 449, 450,
 451, 452, 453, 454, 455, 456, 457, 458,
 459, 460, 461, 462, 463, 464, 465, 466,
 467, 468, 469, 470, 471, 472, 473, 474,
 475, 476, 477, 478, 479, 480, 481, 482,
 483, 484, 485, 486, 487, 488, 489, 490,
 491, 492, 493, 494, 495, 496, 497, 498,
 499, 500, 501, 502, 503, 504, 505, 506,
 507, 508, 509, 510, 511, 512, 513, 514,
 515, 516, 517, 518, 519, 520, 521, 522,
 523, 524, 525, 526, 527, 528, 529, 530,
 531, 532, 533, 534, 535, 536, 537, 538,
 539, 540, 541, 542, 543, 544, 545, 546,
 547, 548, 549, 550, 551, 552, 553, 554,
 555, 556, 557, 558, 559, 560, 561, 562,
 563, 564, 565, 566, 567, 568, 569, 570,
 571, 572, 573, 574, 575, 576, 577, 578,
 579, 580, 581, 582, 583, 584, 585, 586,
 587, 588, 589, 590, 591, 592, 593, 594,
 595, 596, 597, 598, 599, 600, 601, 602,
 603, 604, 605, 606, 607, 608, 609, 610,
 611, 612, 613, 614, 615, 616, 617, 618,
 619, 620, 621, 622, 623, 624, 625, 626,
 627, 628, 629, 630, 631, 632, 633, 634,
 635, 636, 637, 638, 639, 640, 641, 642,
 643, 644, 645, 646, 647, 648, 649, 650,
 651, 652, 653, 654, 655, 656, 657, 658,
 659, 660, 661, 662, 663, 664, 665, 666,
 667, 668, 669, 670, 671, 672, 673, 674,
 675, 676, 677, 678, 679, 680, 681, 682,
 683, 684, 685, 686, 687, 688, 689, 690,
 691, 692, 693, 694, 695, 696, 697, 698,
 699, 700, 701, 702, 703, 704, 705, 706,
 707, 708, 709, 710, 711, 712, 713, 714,
 715, 716, 717, 718, 719, 720, 721, 722,
 723, 724, 725, 726, 727, 728, 729, 730,
 731, 732, 733, 734, 735, 736, 737, 738,
 739, 740, 741, 742, 743, 744, 745, 746,
 747, 748, 749, 750, 751, 752, 753, 754,
 755, 756, 757, 758, 759, 760, 761, 762,
 763, 764, 765, 766, 767, 768, 769, 770,
 771, 772, 773, 774, 775, 776, 777, 778,
 779, 780, 781, 782, 783, 784, 785, 786,
 787, 788, 789, 790, 791, 792, 793, 794,
 795, 796, 797, 798, 799, 800, 801, 802,
 803, 804, 805, 806, 807, 808, 809, 810,
 811, 812, 813, 814, 815, 816, 817, 818,
 819, 820, 821, 822, 823, 824, 825, 826,
 827, 828, 829, 830, 831, 832, 833, 834,
 835, 836, 837, 838, 839, 840, 841, 842,
 843, 844, 845, 846, 847, 848, 849, 850,
 851, 852, 853, 854, 855, 856, 857, 858,
 859, 860, 861, 862, 863, 864, 865, 866,
 867, 868, 869, 870, 871, 872, 873, 874,
 875, 876, 877, 878, 879, 880, 881, 882,
 883, 884, 885, 886, 887, 888, 889, 890,
 891, 892, 893, 894, 895, 896, 897, 898,
 899, 900, 901, 902, 903, 904, 905, 906,
 907, 908, 909, 910, 911, 912, 913, 914,
 915, 916, 917, 918, 919, 920, 921, 922,
 923, 924, 925, 926, 927, 928, 929, 930,
 931, 932, 933, 934, 935, 936, 937, 938,
 939, 940, 941, 942, 943, 944, 945, 946,
 947, 948, 949, 950, 951, 952, 953, 954,
 955, 956, 957, 958, 959, 960, 961, 962,
 963, 964, 965, 966, 967, 968, 969, 970,
 971, 972, 973, 974, 975, 976, 977, 978,
 979, 980, 981, 982, 983, 984, 985, 986,
 987, 988, 989, 990, 991, 992, 993, 994,
 995, 996, 997, 998, 999, 1000.

C.F. 2080-

Quitclaim Deed-City of L.A. to L.A. Co. Flood Control Dist.
 E 65-41, OR 21162-190

Final judgment as to parcel 148 rendered
 in favor of Plff. August 8, 1944
 E 65-54, OR 21132-270

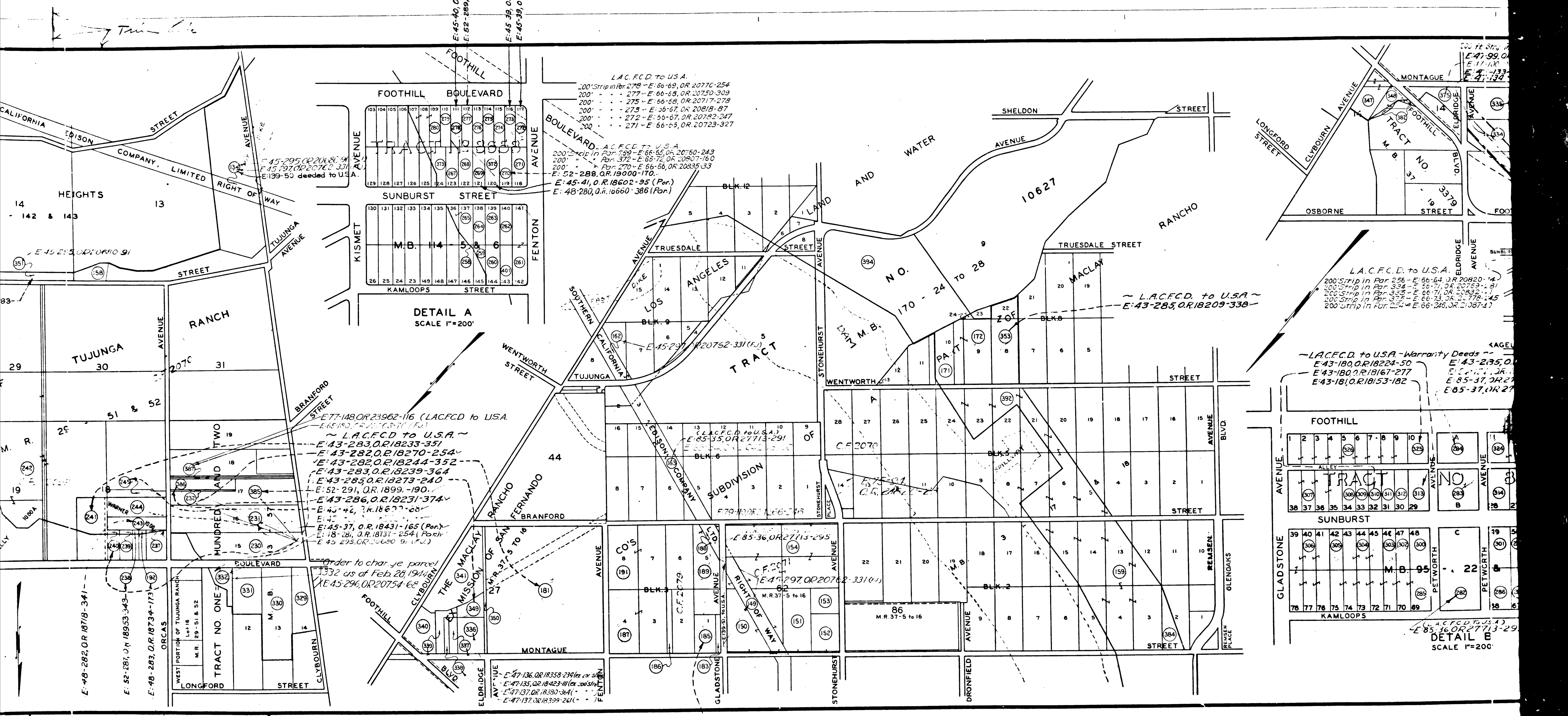
Final judgment as to parcel 397 rendered
 in favor of Plff. March 23, 1945
 E 65-180, OR 22013-70

Final judgment in favor of Plff. as to parcels
 134, 231, 232, 332, 351, 385, 386
 rendered Mar 23, 1944
 E 45-295, OR 20762-91

Final judgment in favor of Plff. as to
 parcels 134, 231, 232, 332, 351, 385, 386
 rendered Mar 23, 1944
 E 45-295, OR 20762-91

Final judgment as to parcels 134,
 149, 162, 188, 252 in favor of Plff. rendered
 April 4, 1944
 E 45-297, OR 20762-131

Final judgment in favor of Plff. as to parcels
 128, 170, 171, 231, 244, 245, 247, 248, 258, 263, 272,
 273, 274, 276, 280, 281, 282, 283, 284, 285, 286, 287,
 288, 289, 290, 291, 292, 293, 294, 295, 296, 297,
 298, 299, 300, 301, 302, 303, 304, 305, 306, 307,
 308, 309, 310, 311, 312, 313, 314, 315, 316,
 317, 318, 319, 320, 321, 322, 323, 324, 325,
 326, 327, 328, 329, 330, 331, 332, 333, 334,
 335, 336, 337, 338, 339, 340, 341, 342, 343,
 344, 345, 346, 347, 348, 349, 350, 351, 352,
 353, 354, 355, 356, 357, 358, 359, 360, 361,
 362, 363, 364, 365, 366, 367, 368, 369, 370,
 371, 372, 373, 374, 375, 376, 377, 378, 379,
 380, 381, 382, 383, 384, 385, 386, 387, 388,
 389, 390, 391, 392, 393, 394, 395, 396, 397,
 398, 399, 400, 401, 402, 403, 404, 405, 406,
 407, 408, 409, 410, 411, 412, 413, 414, 415,
 416, 417, 418, 419, 420, 421, 422, 423, 424,
 425, 426, 427, 428, 429, 430, 431, 432, 433,
 434, 435, 436, 437, 438, 439, 440, 441, 442,
 443, 444, 445, 446, 447, 448, 449, 450, 451,
 452, 453, 454, 455, 456, 457, 458, 459, 460,
 461, 462, 463, 464, 465, 466, 467, 468, 469,
 470, 471, 472, 473, 474, 475, 476, 477, 478,
 479, 480, 481, 482, 483, 484, 485, 486, 487,
 488, 489, 490, 491, 492, 493, 494, 495, 496,
 497, 498, 499, 500, 501, 502, 503, 504, 505,
 506, 507, 508, 509, 510, 511, 512, 513, 514,
 515, 516, 517, 518, 519, 520, 521, 522, 523,
 524, 525, 526, 527, 528, 529, 530, 531, 532,
 533, 534, 535, 536, 537, 538, 539, 540, 541,
 542, 543, 544, 545, 546, 547, 548, 549, 550,
 551, 552, 553, 554, 555, 556, 557, 558, 559,
 560, 561, 562, 563, 564, 565, 566, 567, 568,
 569, 570, 571, 572, 573, 574, 575, 576, 577,
 578, 579, 580, 581, 582, 583, 584, 585, 586,
 587, 588, 589, 590, 591, 592, 593, 594, 595,
 596, 597, 598, 599, 600, 601, 602, 603, 604,
 605, 606, 607, 608, 609, 610, 611, 612, 613,
 614, 615, 616, 617, 618, 619, 620, 621, 622,
 623, 624, 625, 626, 627, 628, 629, 630, 631,
 632, 633, 634, 635, 636, 637, 638, 639, 640,
 641, 642, 643, 644, 645, 646, 647, 648, 649,
 650, 651, 652, 653, 654, 655, 656, 657, 658,
 659, 660, 661, 662, 663, 664, 665, 666, 667,
 668, 669, 670, 671, 672, 673, 674, 675, 676,
 677, 678, 679, 680, 681, 682, 683, 684, 685,
 686, 687, 688, 689, 690, 691, 692, 693, 694,
 695, 696, 697, 698, 699, 700, 701, 702, 703,
 704, 705, 706, 707, 708, 709, 710, 711, 712,
 713, 714, 715, 716, 717, 718, 719, 720, 721,
 722, 723, 724, 725, 726, 727, 728, 729, 730,
 731, 732, 733, 734, 735, 736, 737, 738, 739,
 740, 741, 742, 743, 744, 745, 746, 747, 748,
 749, 750, 751, 752, 753, 754, 755, 756, 757,
 758, 759, 760, 761, 762, 763, 764, 765, 766,
 767, 768, 769, 770, 771, 772, 773, 774, 775,
 776, 777, 778, 779, 780, 781, 782, 783, 784,
 785, 786, 787, 788, 789, 790, 791, 792, 793,
 794, 795, 796, 797, 798, 799, 800, 801, 802,
 803, 804, 805, 806, 807, 808, 809, 810, 811,
 812, 813, 814, 815, 816, 817, 818, 819, 820,
 821, 822, 823, 824, 825, 826, 827, 828, 829,
 830, 831, 832, 833, 834, 835, 836, 837, 838,
 839, 840, 841, 842, 843, 844, 845, 846, 847,
 848, 849, 850, 851, 852, 853, 854, 855, 856,
 857, 858, 859, 860, 861, 862, 863, 864, 865,
 866, 867, 868, 869, 870, 871, 872, 873, 874,
 875, 876, 877, 878, 879, 880, 881, 882, 883,
 884, 885, 886, 887, 888, 889, 890, 891, 892,
 893, 894, 895, 896, 897, 898, 899, 900, 901,
 902, 903, 904, 905, 906, 907, 908, 909, 910,
 911, 912, 913, 914, 915, 916, 917, 918, 919,
 920, 921, 922, 923, 924, 925, 926, 927, 928,
 929, 930, 931, 932, 933, 934, 935, 936, 937,
 938, 939, 940, 941, 942, 943, 944, 945, 946,
 947, 948, 949, 950, 951, 952, 953, 954, 955,
 956, 957, 958, 959, 960, 961, 962, 963, 964,
 965, 966, 967, 968, 969, 970, 971, 972, 973,
 974, 975, 976, 977, 978, 979, 980, 981, 982,
 983, 984, 985, 986, 987, 988, 989, 990, 991,
 992, 993, 994, 995, 996, 997, 998, 999, 1000.



L.A.C.F.C.D. to U.S.A.
 200' Strip in Par. 278 - E. 66-69, OR 20770-254
 200' - - - 277 - E. 66-68, OR 20750-309
 200' - - - 275 - E. 66-68, OR 20717-278
 200' - - - 273 - E. 66-67, OR 20818-87
 200' - - - 272 - E. 66-67, OR 20782-247
 200' - - - 271 - E. 66-65, OR 20723-327

L.A.C.F.C.D. to U.S.A.
 200' Strip in Par. 359 - E. 66-65, OR 20750-243
 200' - - - Par. 372 - E. 66-72, OR 20807-160
 200' - - - Par. 270 - E. 66-66, OR 20835-33
 E. 52-288, OR 19000-170.
 E. 45-41, O.R. 18602-95 (Par.)
 E. 48-280, O.R. 10660-386 (Par.)

L.A.C.F.C.D. to U.S.A.
 200' Strip in Par. 256 - E. 66-64, OR 20820-14
 200' Strip in Par. 334 - E. 66-71, OR 20753-81
 200' Strip in Par. 338 - E. 66-71, OR 20830-71
 200' Strip in Par. 376 - E. 66-73, OR 2178-145
 200' Strip in Par. 254 - E. 66-246, OR 21087-17

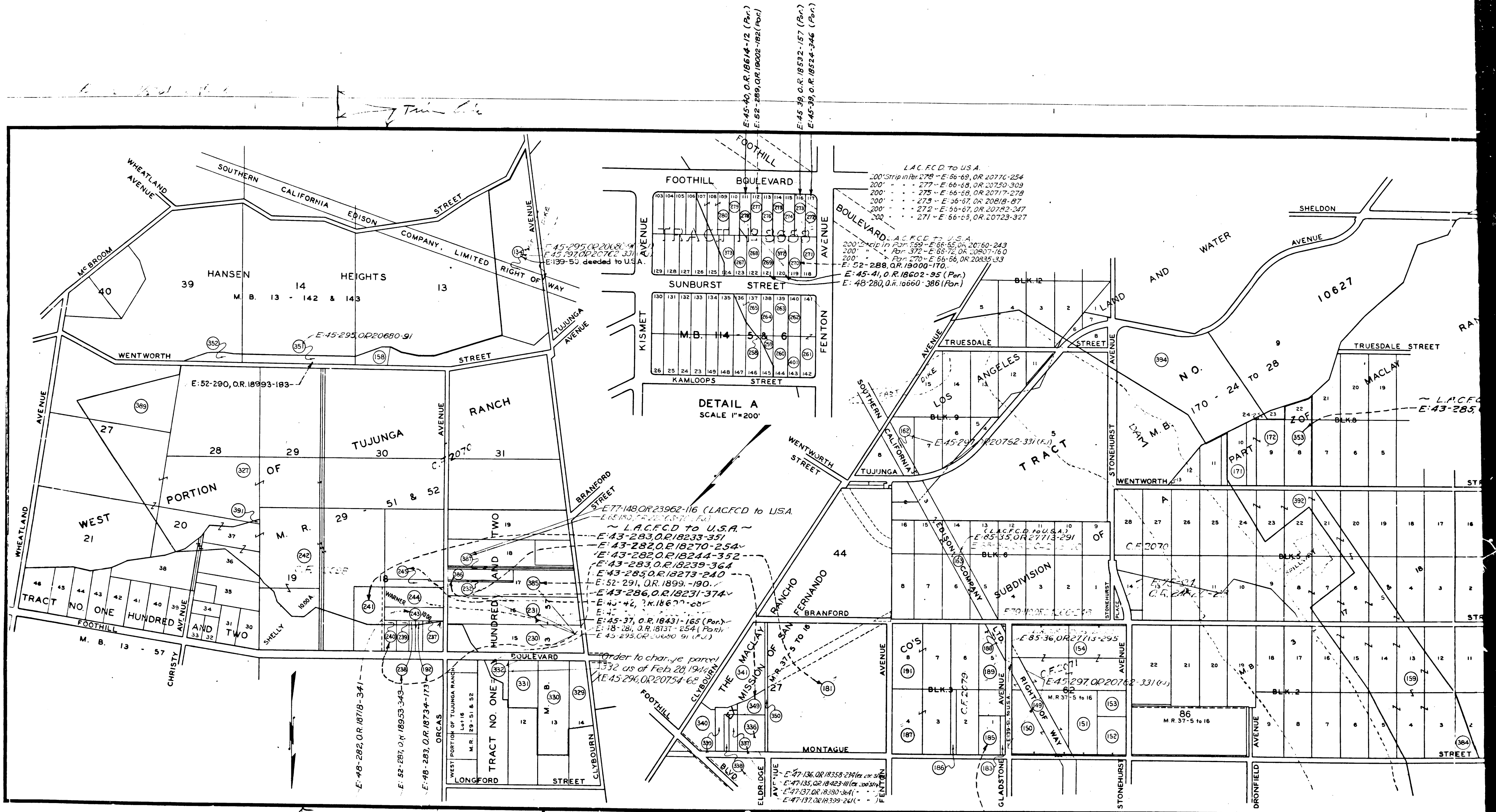
L.A.C.F.C.D. to U.S.A. - Warranty Deeds
 E. 43-180, O.R. 18224-50
 E. 43-180, O.R. 18167-277
 E. 43-181, O.R. 18153-182
 E. 43-235, O.R. 18235-01
 E. 85-37, O.R. 222
 E. 85-37, O.R. 22

Order to change parcel
 1332 as of Feb. 28, 1944
 E. 45-296, OR 20754-68

L.A.C.F.C.D. to U.S.A.
 E. 43-284, O.R. 18281-192

DETAIL A
 SCALE 1"=200'

DETAIL B
 SCALE 1"=200'



E: 45-40, O.R. 18614-12 (Par.)
 E: 52-289, O.R. 19002-192 (Par.)
 E: 45-39, O.R. 18532-157 (Par.)
 E: 45-39, O.R. 18524-346 (Par.)

L.A.C.F.C.D. to U.S.A.
 200' Strip in Feb. 178 - E: 56-69, O.R. 20776-254
 200' - 277 - E: 66-68, O.R. 20750-309
 200' - 275 - E: 66-68, O.R. 20717-279
 200' - 273 - E: 56-67, O.R. 20618-87
 200' - 272 - E: 56-67, O.R. 20742-347
 200' - 271 - E: 66-65, O.R. 20723-327

L.A.C.F.C.D. to U.S.A.
 200' Strip in Par. 359 - E: 66-65, O.R. 20760-243
 200' - Par. 372 - E: 66-72, O.R. 20807-160
 200' - Par. 270 - E: 56-66, O.R. 20835-33
 E: 52-288, O.R. 19000-170
 E: 45-41, O.R. 18602-95 (Par.)
 E: 48-280, O.R. 18660-386 (Par.)

DETAIL A
 SCALE 1"=200'

E: 77-148, O.R. 23962-116 (L.A.C.F.C.D. to U.S.A.)
 E: 65-190, O.R. 20563-116 (Par.)
 ~ L.A.C.F.C.D. to U.S.A. ~
 E: 43-283, O.R. 18233-351
 E: 43-282, O.R. 18270-254
 E: 43-283, O.R. 18244-352
 E: 43-283, O.R. 18239-364
 E: 43-285, O.R. 18273-240
 E: 52-291, O.R. 1899-190
 E: 43-286, O.R. 18231-374
 E: 45-42, O.R. 18600-08
 E: 45-37, O.R. 18431-165 (Par.)
 E: 18-281, O.R. 18131-254 (Par.)
 E: 45-295, O.R. 20680-91 (Par.)

Order to change parcel
 1332 as of Feb. 28, 1944
 E: 45-296, O.R. 20754-68

E: 47-136, O.R. 18358-230 (Par.)
 E: 47-135, O.R. 18423-411 (Par.)
 E: 47-137, O.R. 18350-361
 E: 47-137, O.R. 18399-241

~ L.A.C.F.C.D. to U.S.A. ~
 E: 43-284, O.R. 18281-192

Trim line

3

C.F. 2080-