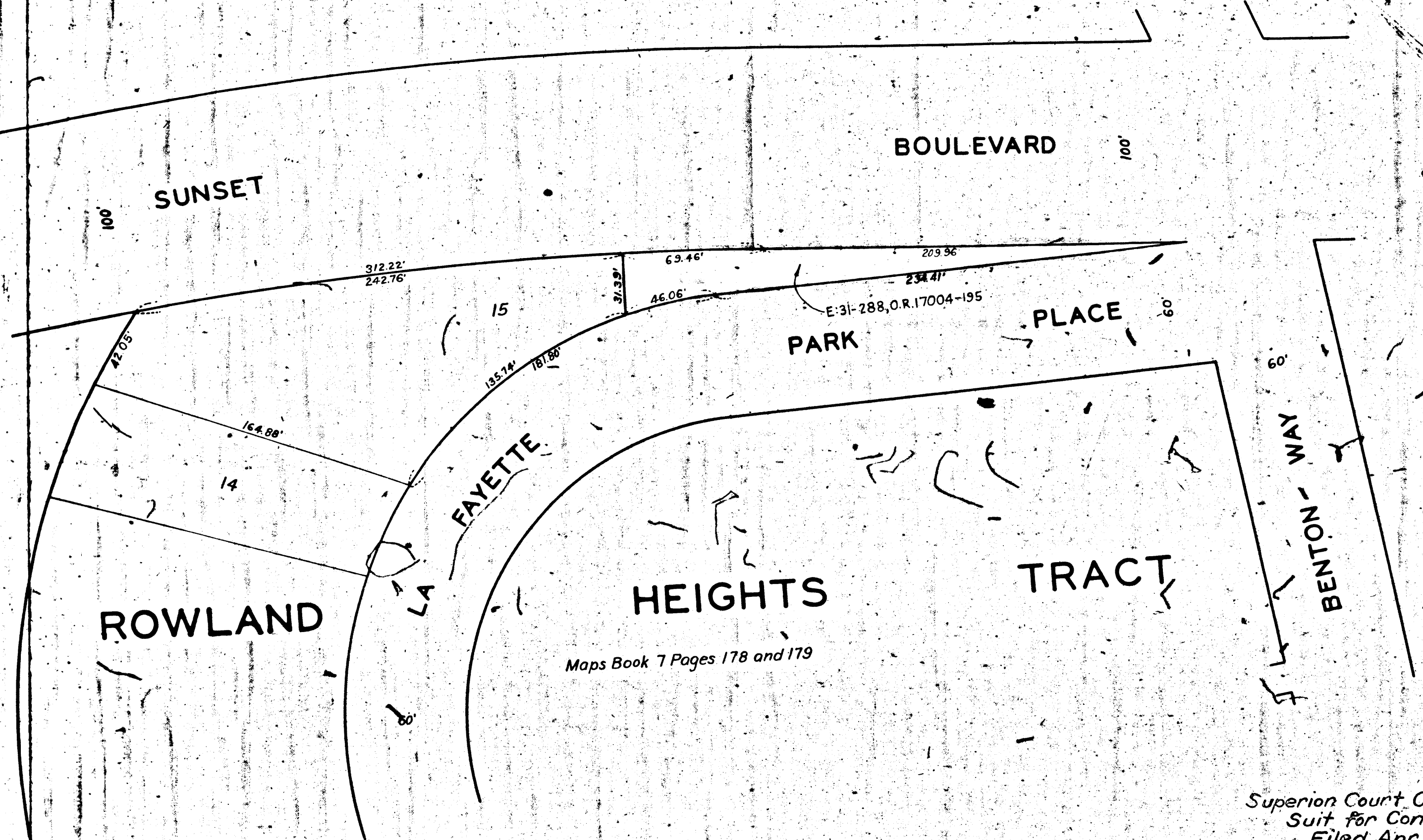


0220-A

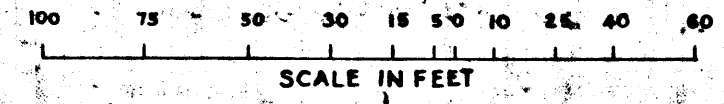
0220-A



MAP

SHOWING REAL PROPERTY TO BE CONDEMNED
 FOR PUBLIC STREET PURPOSES
 LYING BETWEEN THE SOUTHERLY LINE OF SUNSET BOULEVARD
 AND NORTHERLY LINE OF LA FAYETTE PARK PLACE
 AND EXTENDING FROM BENTON WAY TO A POINT APPROXIMATELY
 TWO HUNDRED EIGHTY FEET WESTERLY THEREFROM
 IN THE CITY OF LOS ANGELES CALIFORNIA

IN ACCORDANCE WITH ORDINANCE NO. 80848
 LLOYD ALDRICH CITY ENGINEER APRIL 1939



NOTES
 Land to be condemned for public street purposes shown colored red
 Dotted lines and dimensions show property holdings in those cases
 where they differ from recorded subdivisions

INDEX 2

Superior Court Case No. 438497
 Suit for Condemnation
 Filed Apr. 11, 1939
 City of Los Angeles, Plaintiff
 vs
 Mary De Bell, et al, Defendants.

Right of Way No.	R/W 4939	Improvement of
Sunset Blvd. (S/S) Benton Way to 280' Westerly		
Order No.	410 87327	
Clerk's File	3379-38	Div. Index 31
Sewers/Storm Drains	required	19 By
Calc.	Snelson	Traced Snelson & Co. Ckd
Submitted	April 6 1939	City Engr. F.W. Goldworthy
Submitted	April 6 1939	Deputy Engr. [Signature]
Approved	April 6, 1939	City Engineer [Signature]

A-6556

A-0220

A-0220