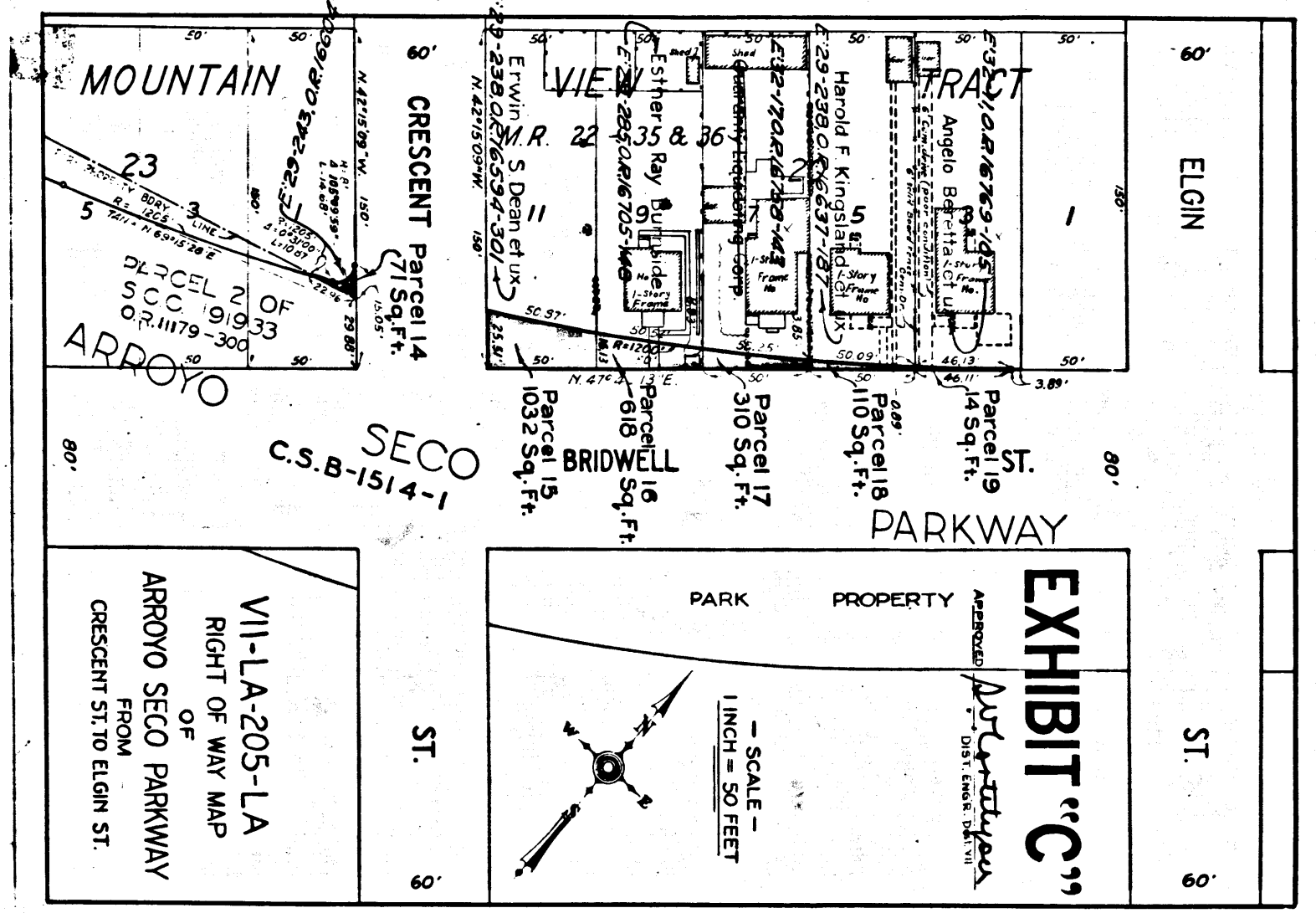
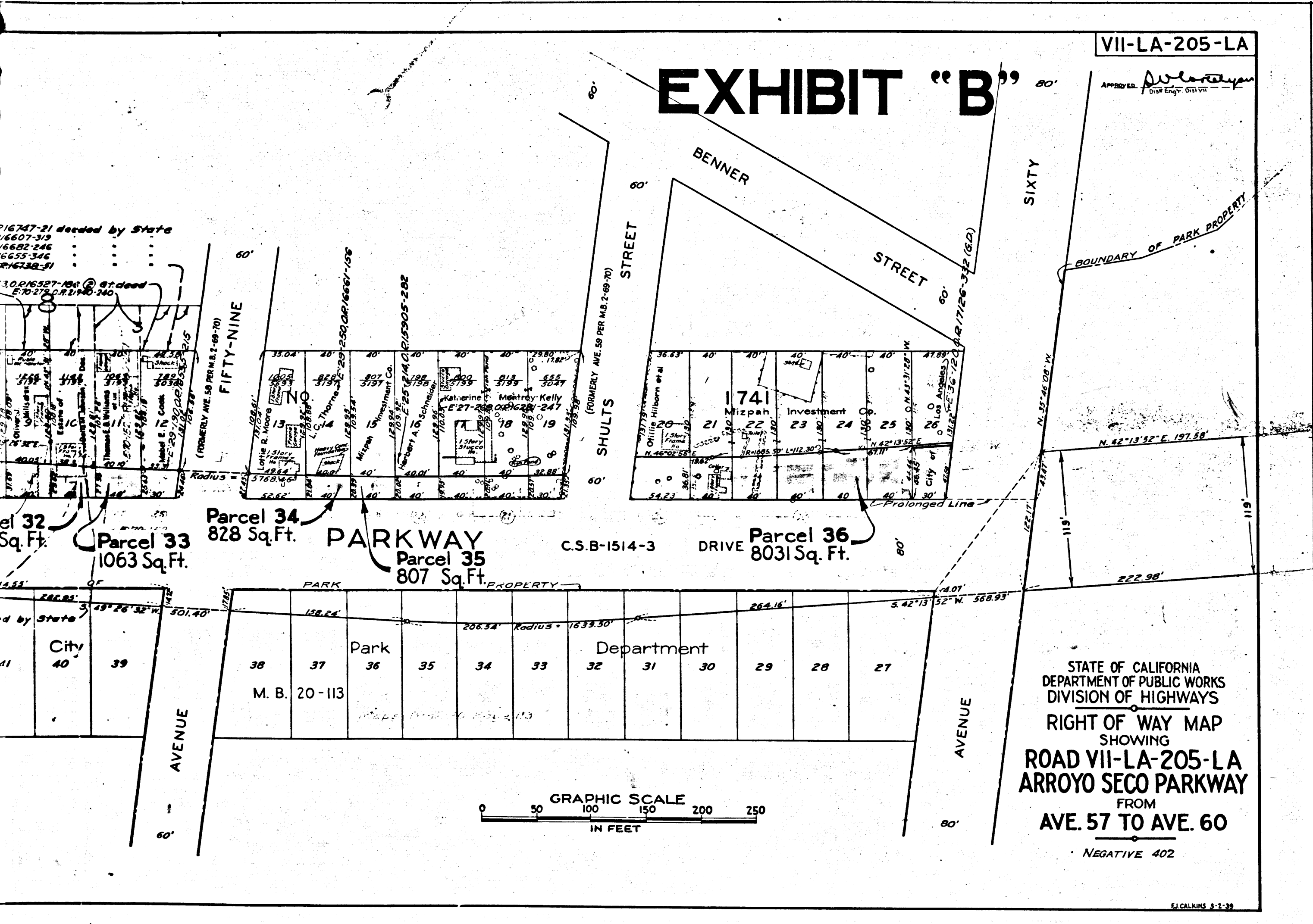


Ord. 79672

VII-LA-205-LA

EXHIBIT "B"

APPROVED: *D. Williams*
Dist. Engr. 051 VII



STATE OF CALIFORNIA
DEPARTMENT OF PUBLIC WORKS
DIVISION OF HIGHWAYS
RIGHT OF WAY MAP
SHOWING
ROAD VII-LA-205-LA
ARROYO SECO PARKWAY
FROM
AVE. 57 TO AVE. 60

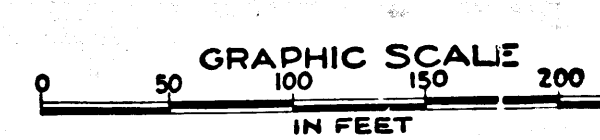
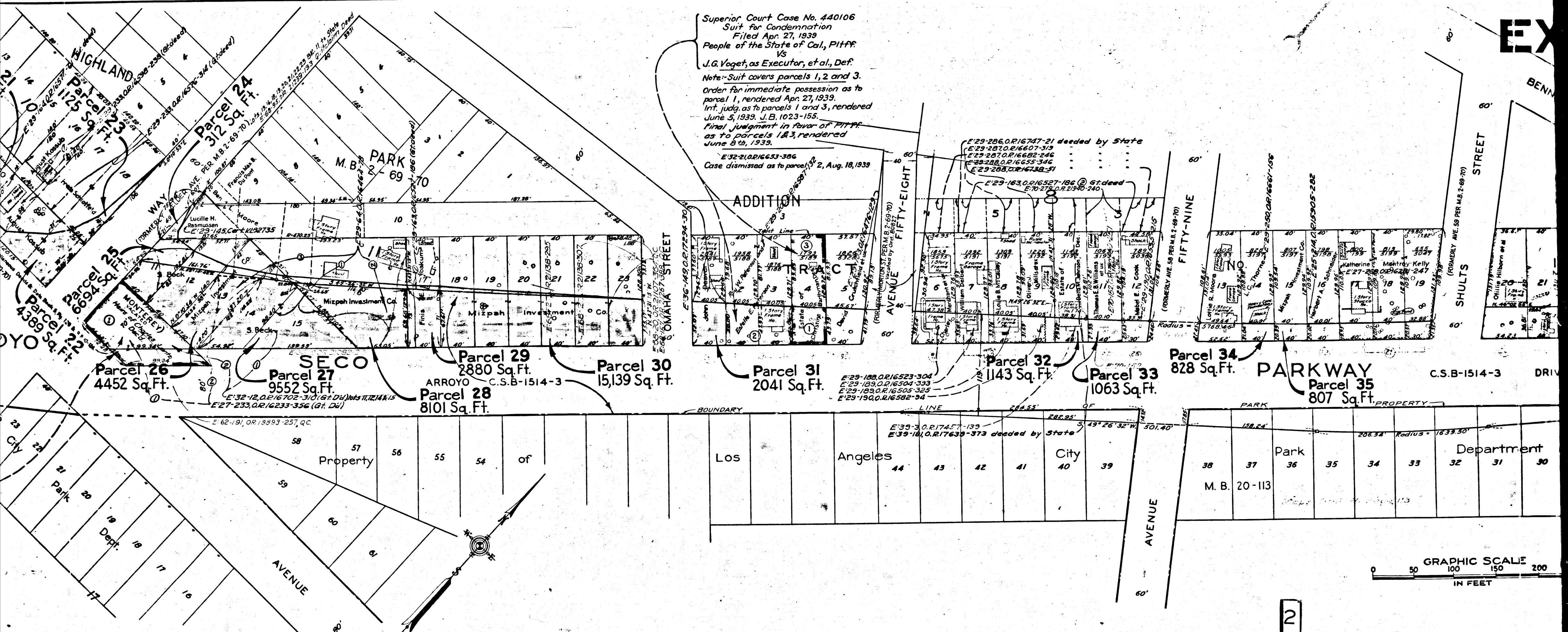
NEGATIVE 402

5/1 CALKINS 3-1-39

Superior Court Case No. 439076
Suit for Condemnation
Filed Apr. 14, 1939
People of the State of Cal., Pltff.
vs
Richard E. Williams, et al., Def.
Suit covers parcels 1 to 8, 11 to 23
and 25 to 36 as shaded red.
Order authorizing Plaintiff to take
immediate possession, rendered
Apr. 14, 1939.
Case Dismissed as to all parcels
on April 20, 1945.

Index B

C.F. 2084-

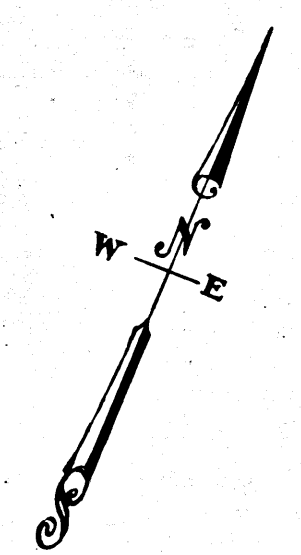
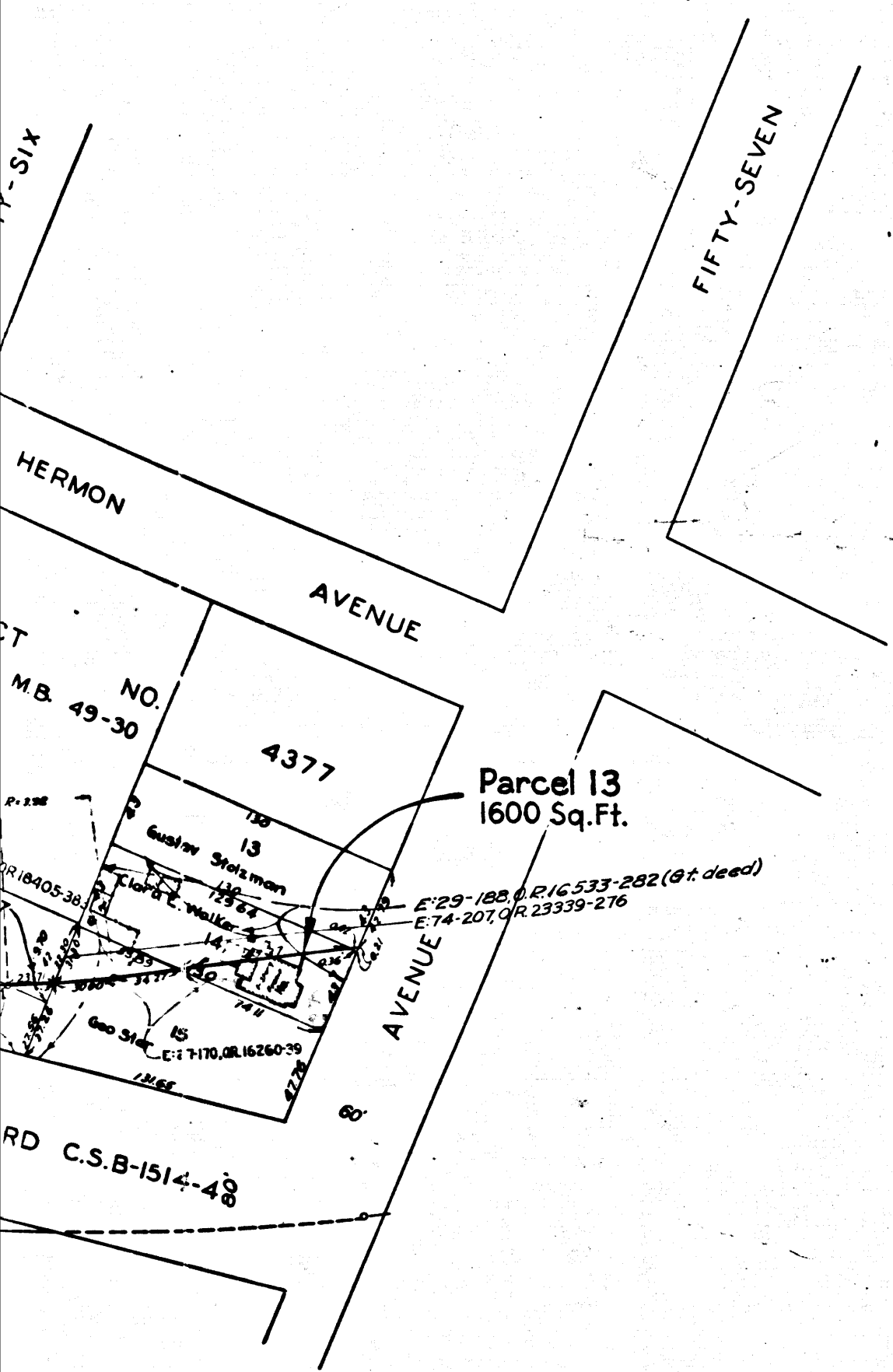


2
C.F. 2084-

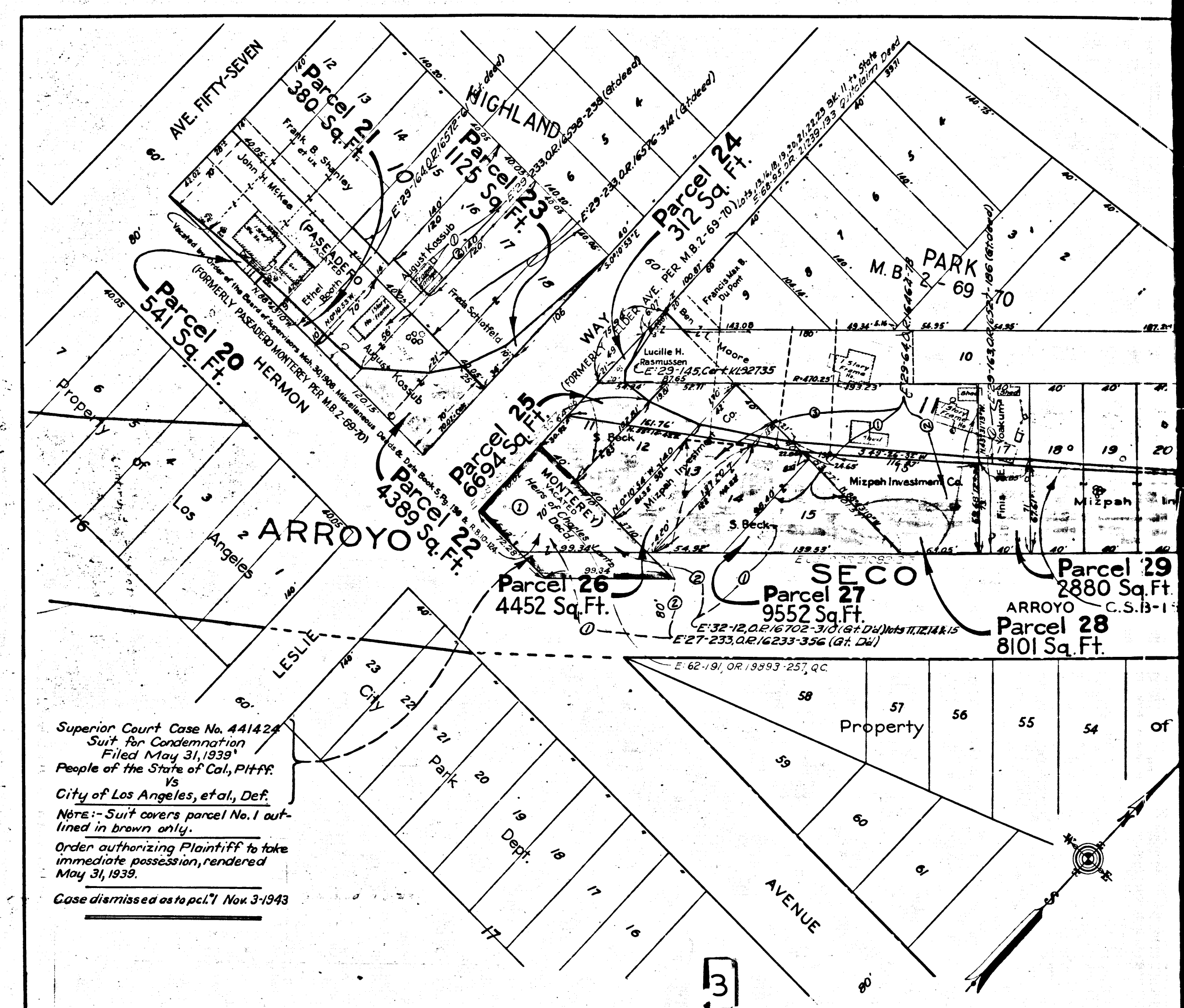
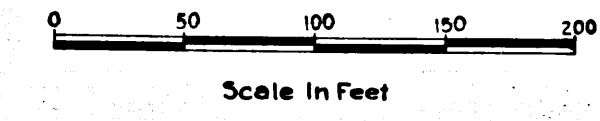
EXHIBIT "A"

DIST	COUNTY	ROUTE	SEC.
VII	LA	205	LA

D. W. ...
 District Engineer

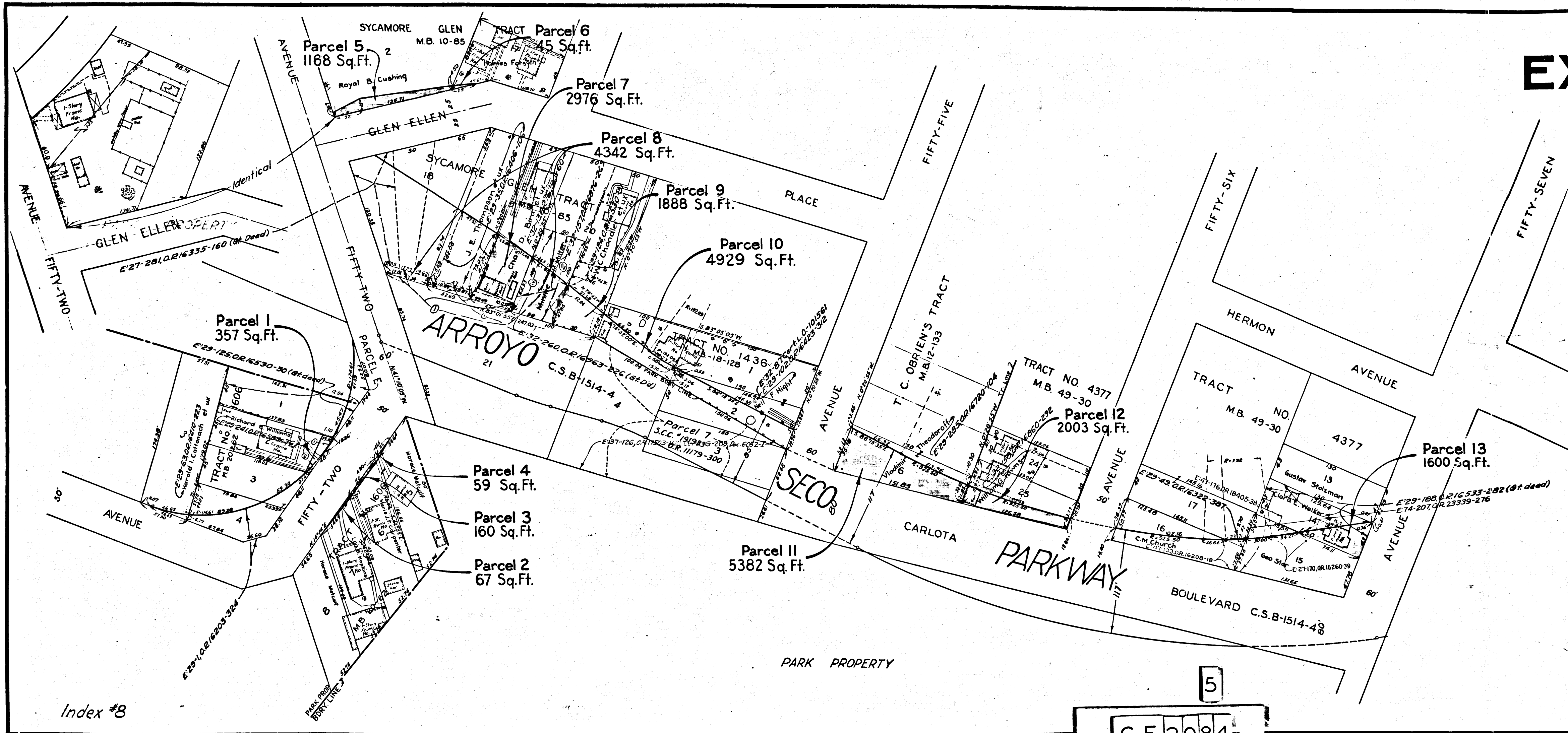


RIGHT OF WAY MAP
 OF
 ARROYO SECO PARKWAY
 FROM AVE. 52 TO AVE. 57



Superior Court Case No. 441424
 Suit for Condemnation
 Filed May 31, 1939
 People of the State of Cal., Pltffs.
 vs
 City of Los Angeles, et al., Def.
 Note: - Suit covers parcel No. 1 out-
 lined in brown only.
 Order authorizing Plaintiff to take
 immediate possession, rendered
 May 31, 1939.
 Case dismissed as to p.c. 1 Nov. 3-1943

C.F. 2084-



EX

Index #8

5

C.F. 2084-