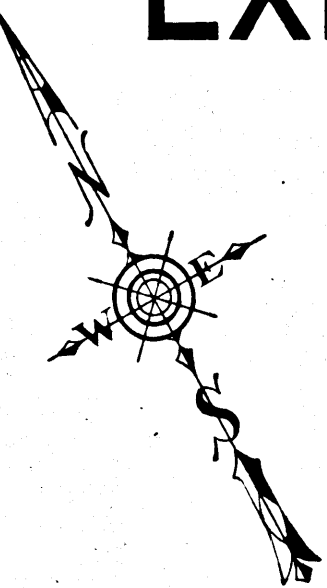


# EXHIBIT "A"

Superior Court Case No. 44010  
 Suit for Condemnation  
 Filed Apr. 25, 1939  
 People of the State of Cal., Plt'ff.  
 Vs  
 H. J. Mc Kinley, et al., Defendants  
 Suit covers parcels 1, 2, 4, 6 to 14, 16 to 23,  
 25 to 33, 35 to 50, 52 to 60, 62, 63, 67, 70, 71,  
 74 and 75 as shaded red on this map.  
 Order for immediate possession,  
 rendered Apr. 25, 1939.  
 Final judgment in favor of Plt'ff. as per  
 parcel 56 rendered June 5th 1941  
 E-48-7, OR 18588-8  
 Case dismissed as to all remaining parcels  
 1, 2, 4, 6, 14, 16 to 23, 25 to 33, 35 to 50, 52 to 55, 57  
 to 60, 62, 63, 67, 70, 71, 74 and 75 Oct 24 39 to Jun 5 41



STATE OF CALIFORNIA  
 DEPARTMENT OF PUBLIC WORKS  
 DIVISION OF HIGHWAYS

## ROAD VII-LA-60-LA RIGHT OF WAY MAP OF LINCOLN BOULEVARD FROM LOS ANGELES-SANTA MONICA CITY LIMITS TO VENICE BLVD.



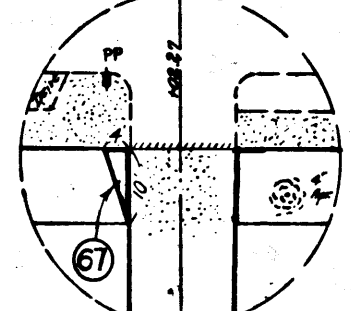
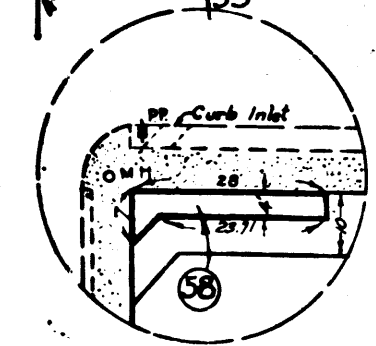
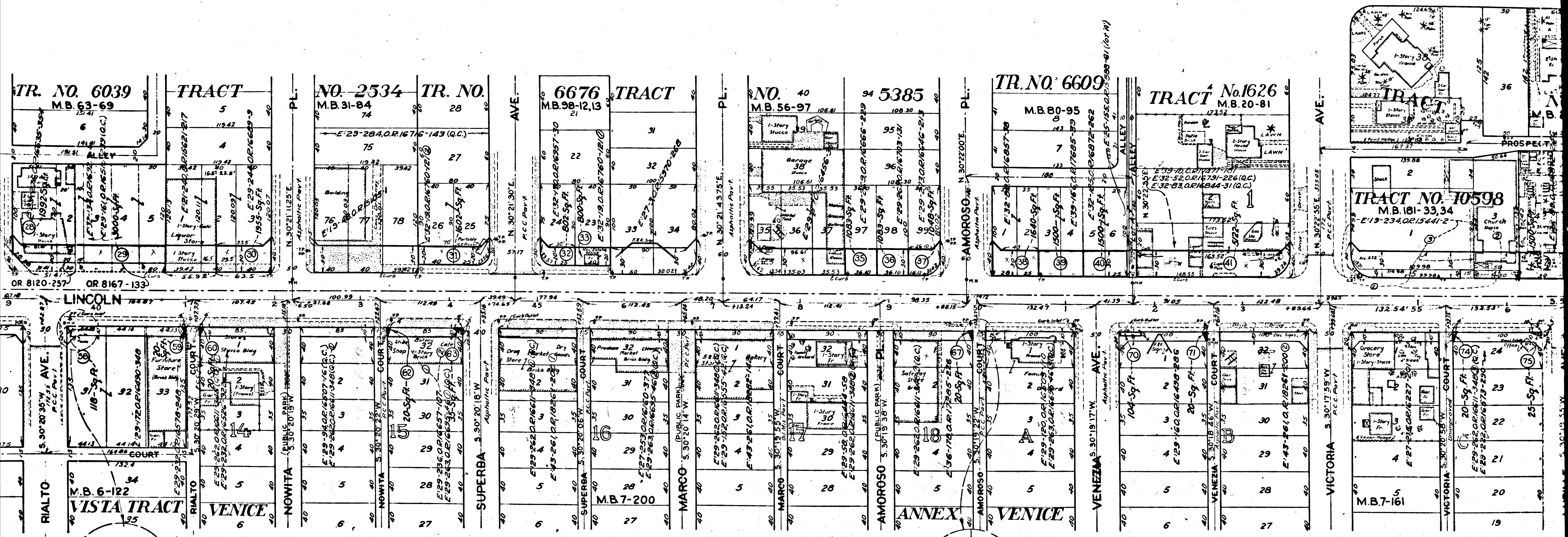
JAN. 1938

NEGATIVE 403.  
 INDEX 21-23

C.F. 2085 -

NOT TO SCALE

10-388



2

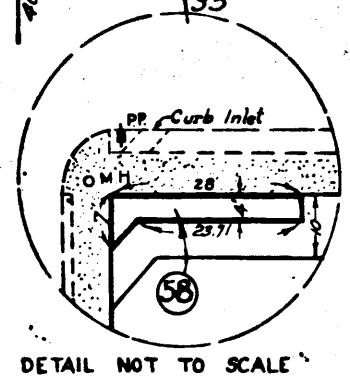
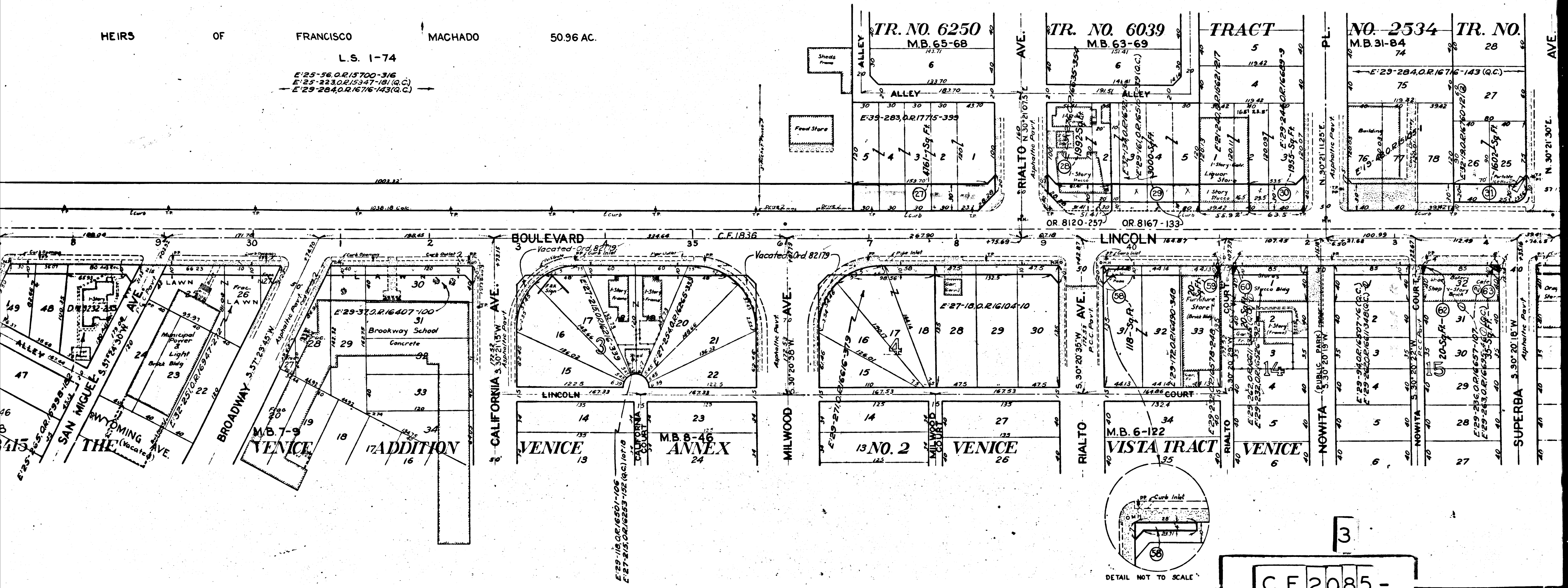
C.F. 2085 -



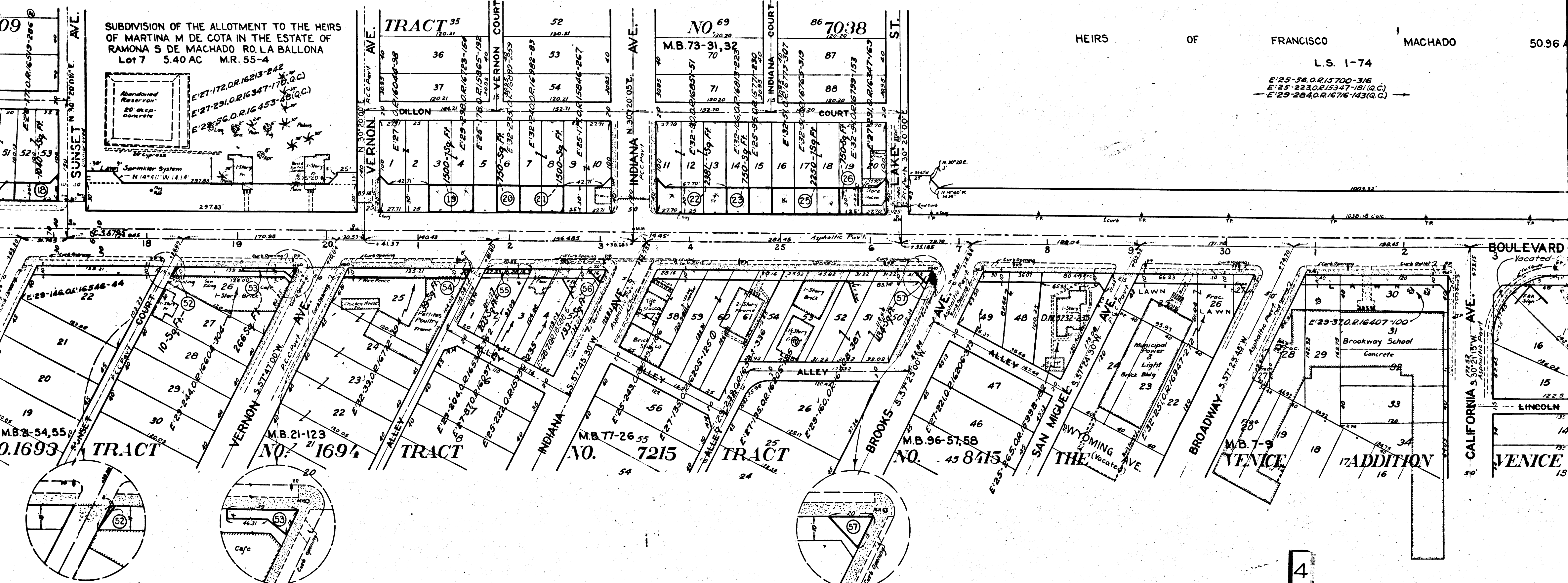
HEIRS OF FRANCISCO MACHADO 50.96 AC.

L.S. 1-74

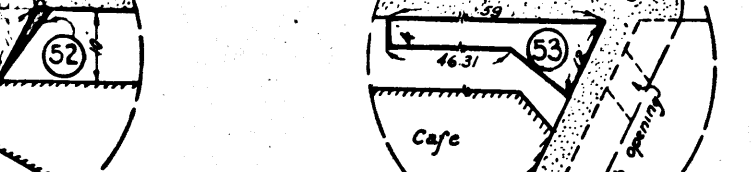
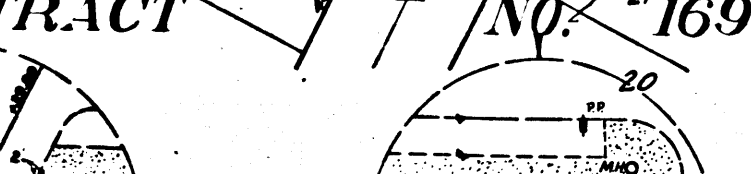
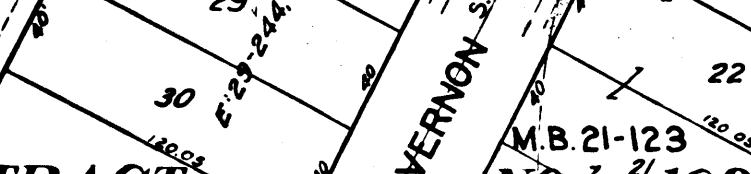
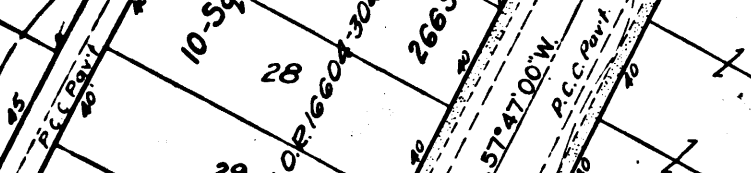
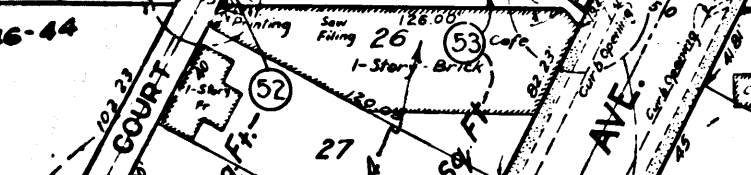
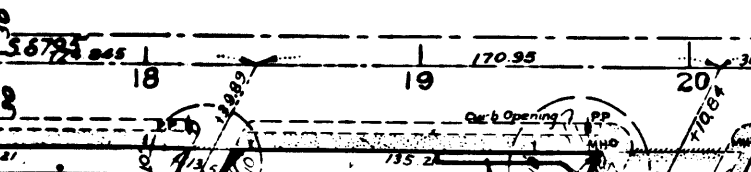
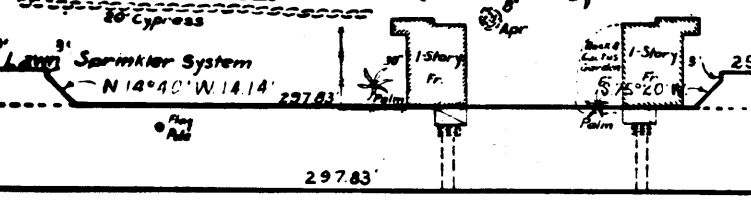
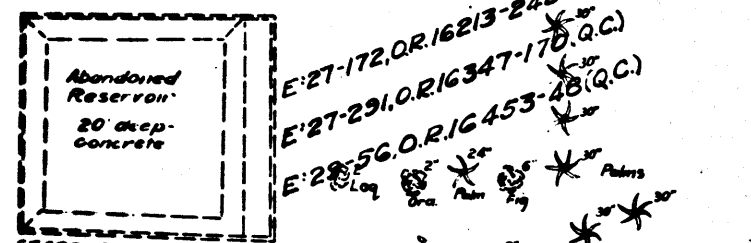
E:25-56 O.R. 15700-3/6  
E:25-223 O.R. 15347-181 (Q.C.)  
E:25-284 O.R. 16716-143 (Q.C.)



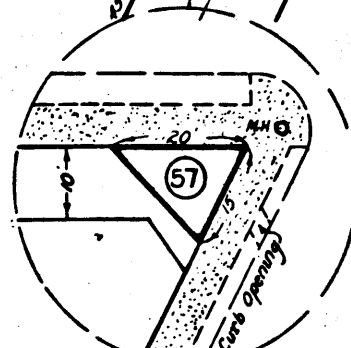
3  
C.F. 2085 -



SUBDIVISION OF THE ALLOTMENT TO THE HEIRS OF MARTINA M DE GOTA IN THE ESTATE OF RAMONA S DE MACHADO RO LA BALLONA Lot 7 5.40 AC M.R. 55-4



DETAILS NOT TO SCALE

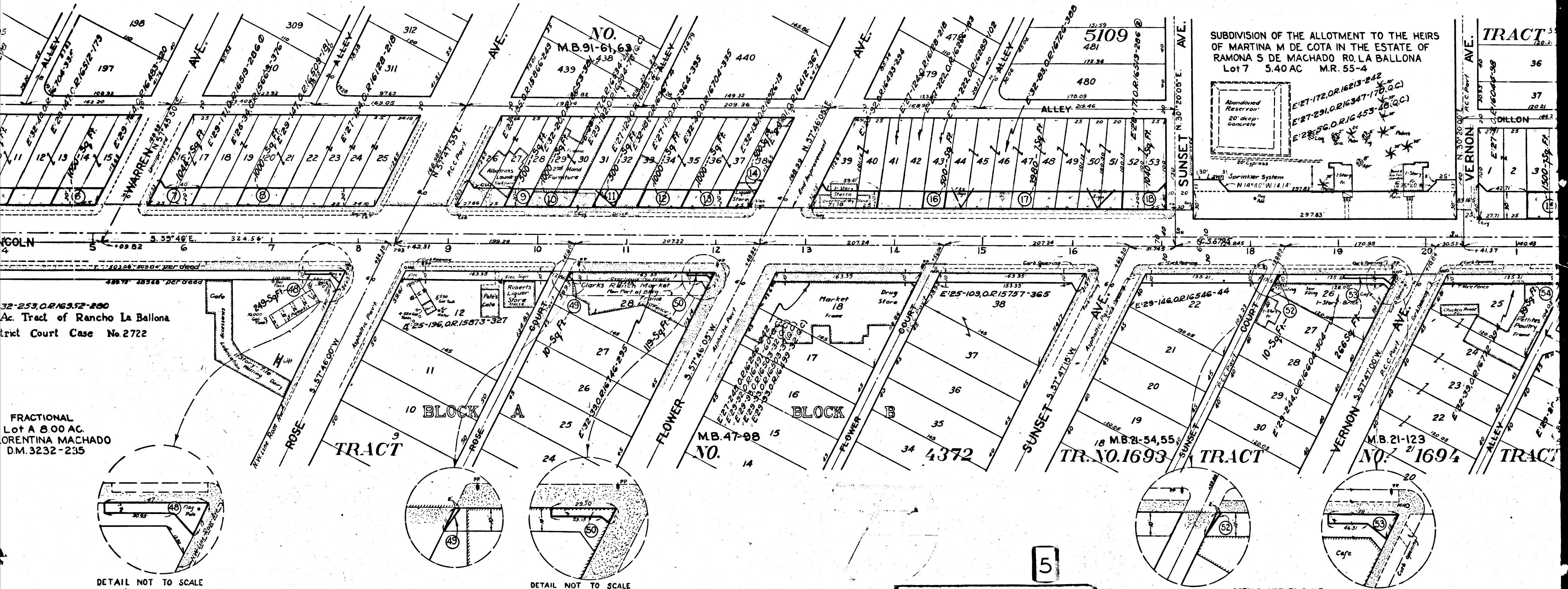


DETAIL NOT TO SCALE

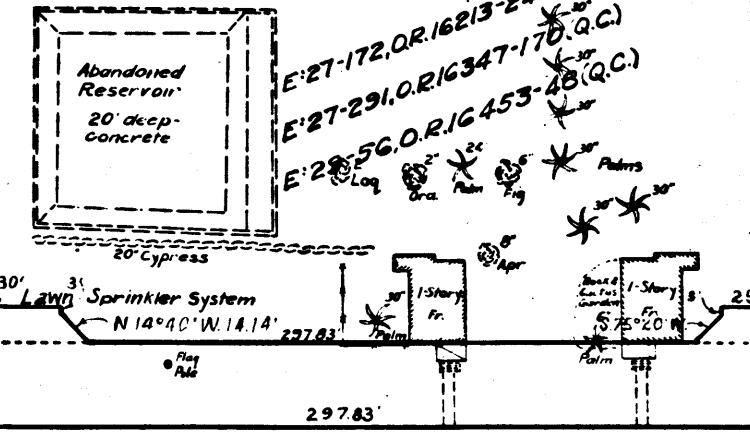
C.F. 2085 -

4





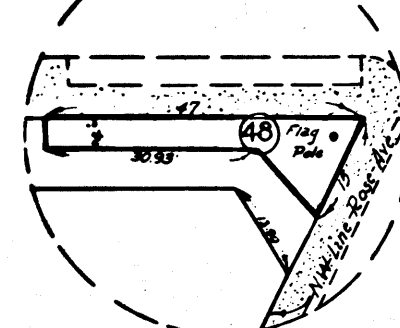
SUBDIVISION OF THE ALLOTMENT TO THE HEIRS OF MARTINA M DE COTA IN THE ESTATE OF RAMONA S DE MACHADO R. LA BALLONA Lot 7 5.40 AC M.R. 55-4



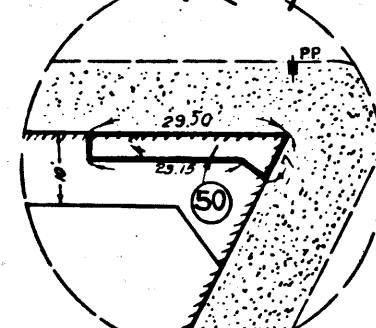
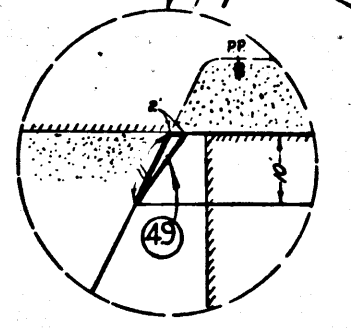
TRACT	NO.	ACRES
36		
37		
38		
39		
40		
41		
42		
43		
44		
45		
46		
47		
48		
49		
50		
51		
52		
53		
54		

32-253, O.R. 163, 12-200  
Ac. Tract of Rancho La Ballona  
District Court Case No. 2722

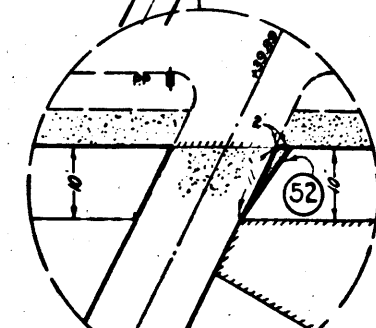
FRACTIONAL  
Lot A 8.00 AC.  
LORENTINA MACHADO  
D.M. 3232-235



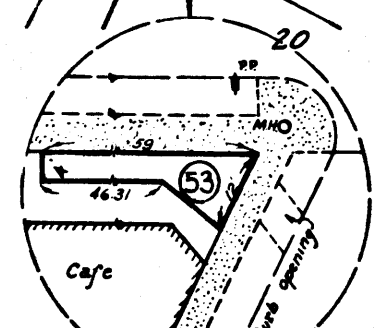
DETAIL NOT TO SCALE



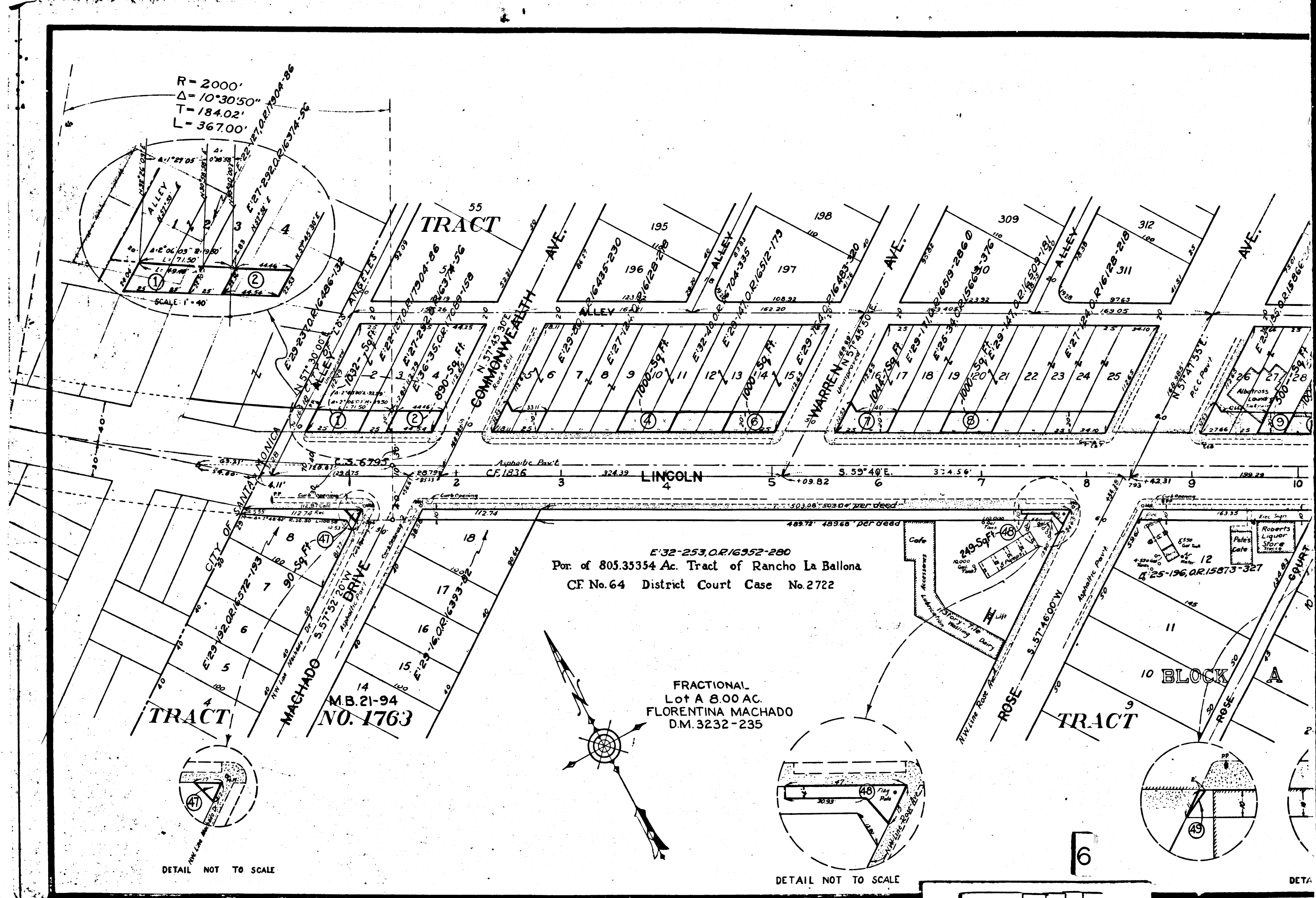
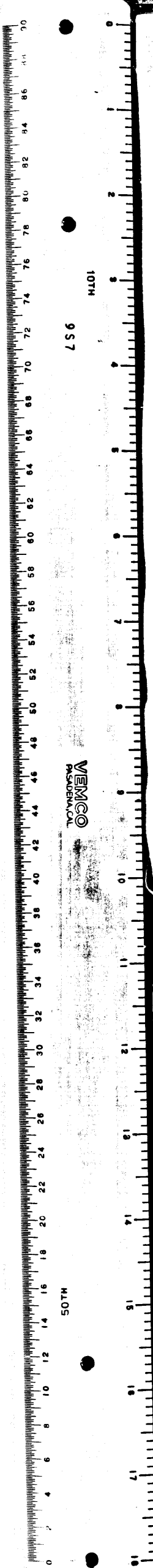
DETAIL NOT TO SCALE



DETAILS NOT TO SCALE



5  
C.F. 2085 -



DETAIL NOT TO SCALE

DETAIL NOT TO SCALE

6

C.F. 2085 -

DETA