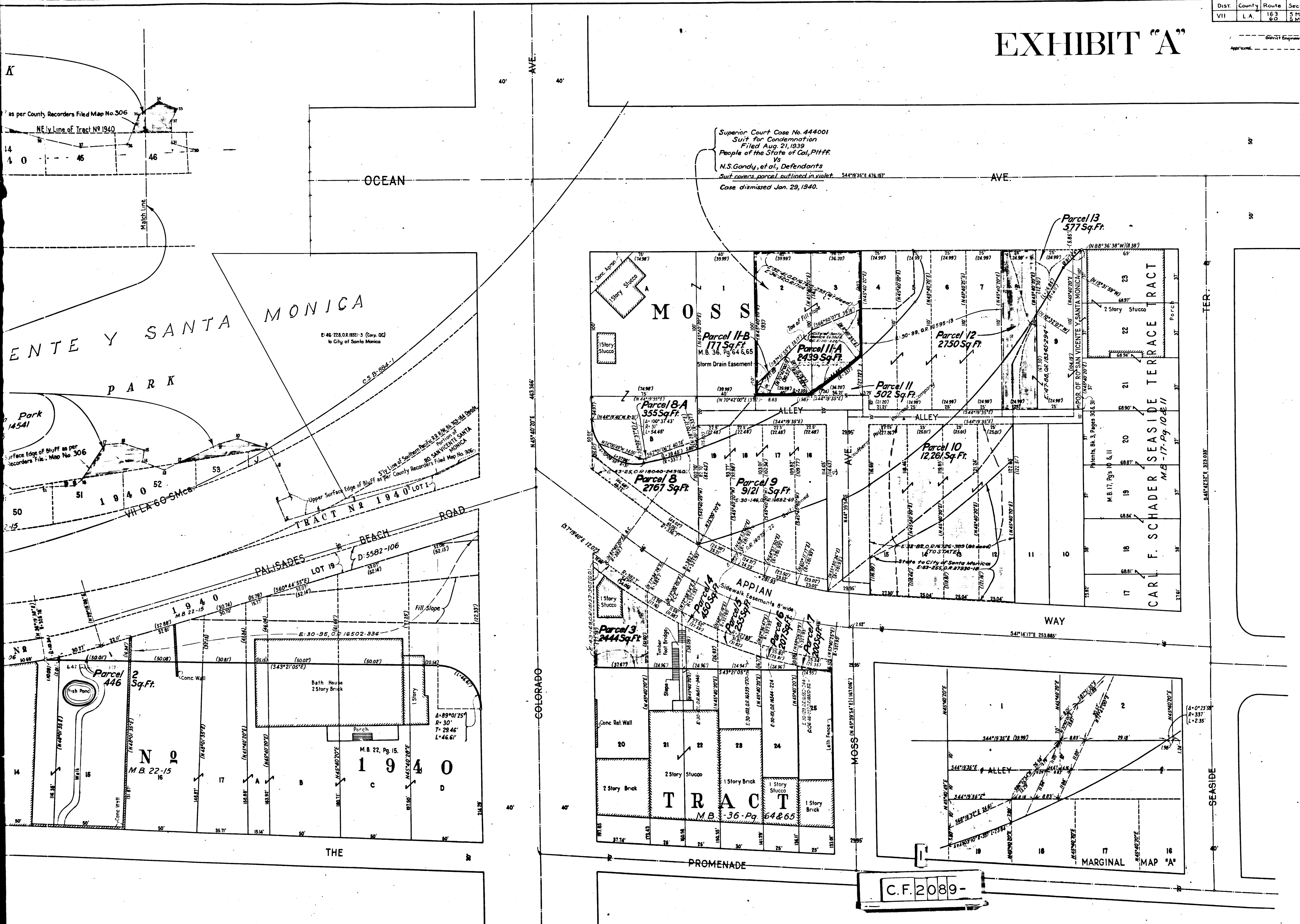


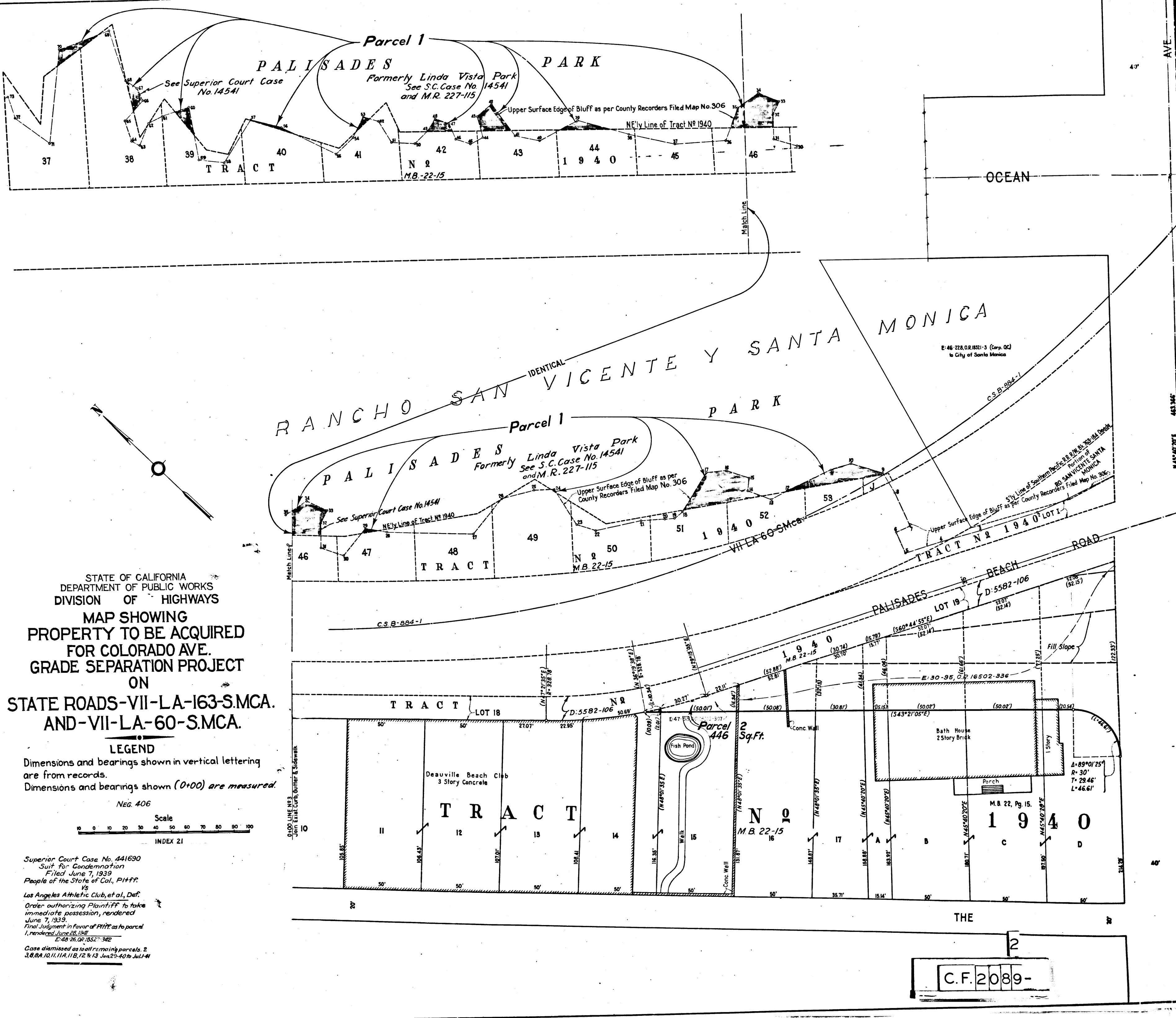
EXHIBIT "A"

District Engineer's Office
Approval: _____



Superior Court Case No. 444001
 Suit for Condemnation
 Filed Aug. 21, 1939
 People of the State of Cal., Pliffs.
 Vs
 N.S. Gandy, et al., Defendants
 Suit covers parcel outlined in violet.
 Case dismissed Jan. 29, 1940.

C.F. 2089-



STATE OF CALIFORNIA
 DEPARTMENT OF PUBLIC WORKS
 DIVISION OF HIGHWAYS
 MAP SHOWING
 PROPERTY TO BE ACQUIRED
 FOR COLORADO AVE.
 GRADE SEPARATION PROJECT
 ON
 STATE ROADS-VII-LA-163-S.MCA.
 AND-VII-LA-60-S.MCA.

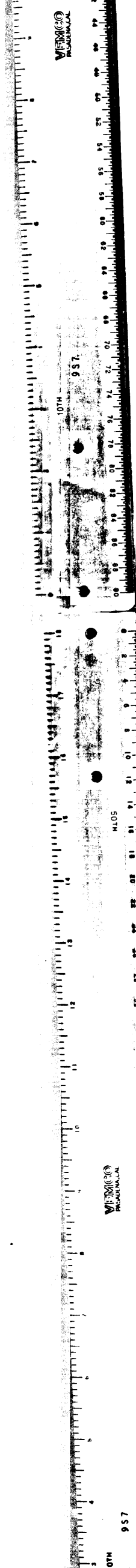
LEGEND
 Dimensions and bearings shown in vertical lettering
 are from records.
 Dimensions and bearings shown (0+00) are measured.

NEG. 406

Scale
 0 10 20 30 40 50 60 70 80 90 100
 INDEX 21

Superior Court Case No. 441690
 Suit for Condemnation
 Filed June 7, 1939
 People of the State of Cal., Plffs.
 vs
 Los Angeles Athletic Club, et al., Defs.
 Order authorizing Plaintiff to take
 immediate possession, rendered
 June 7, 1939.
 Final Judgment in favor of Plffs as to parcel
 1, rendered June 26, 1940.
 E:48 26.00' 152.342
 Case dismissed as to all remaining parcels. 2
 3,8,8A,10,11,11A,11B,12 & 13 June 29-30 to July 1-4

2
 C.F. 2089-



43'
 AVE
 443.865'
 COLORADO