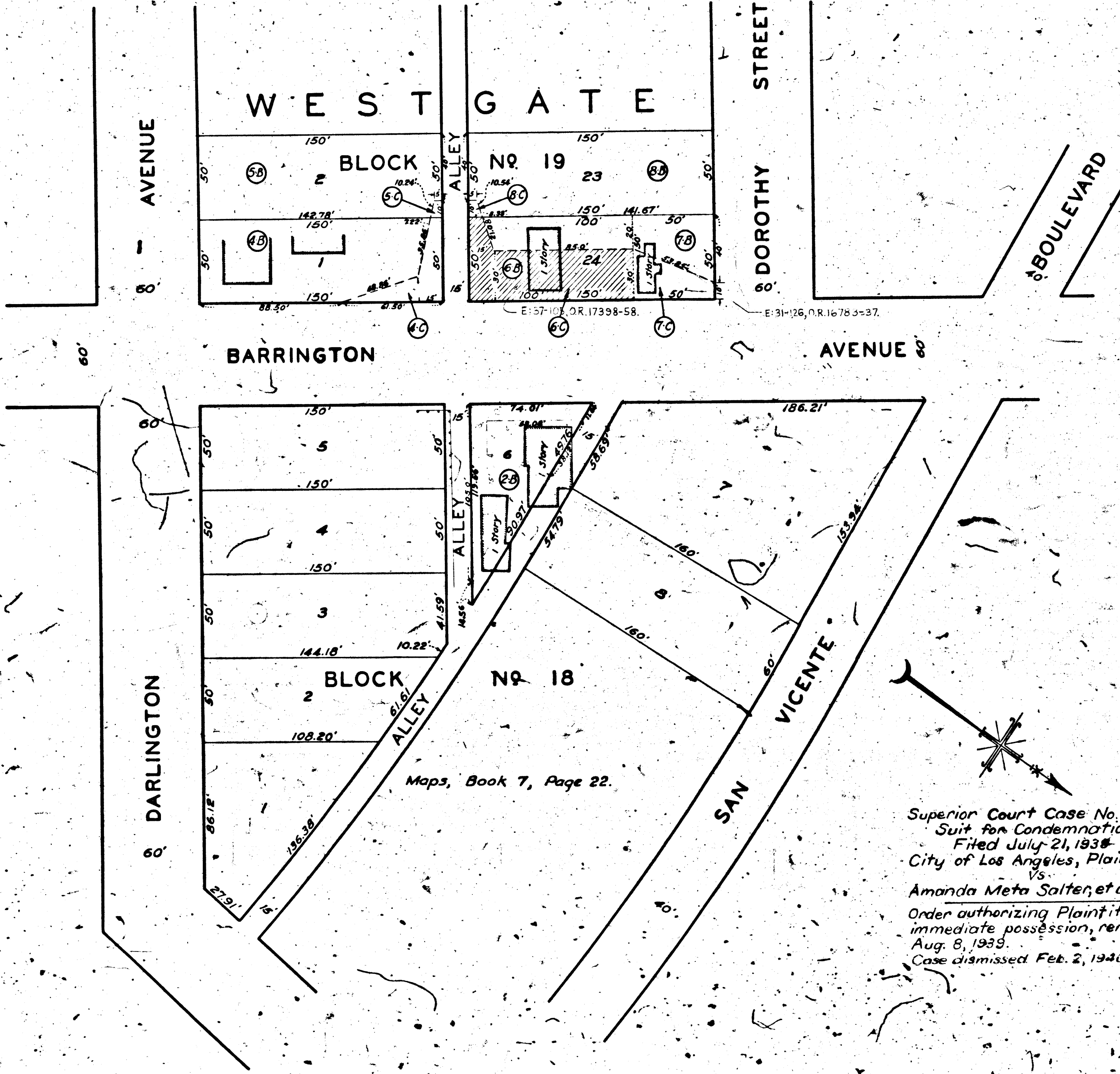
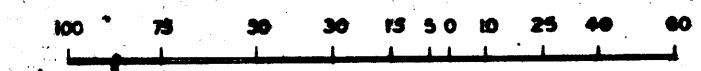


1720-A

1720-A



MAP
 SHOWING REAL PROPERTIES
 TO WHICH IT IS PROPOSED TO ASCERTAIN DAMAGES, IF ANY,
 WHICH WILL BE CAUSED BY THE PROPOSED IMPROVEMENT
 ALSO
 SHOWING EASEMENTS AND RIGHTS-OF-WAY TO BE CONDEMNED
 FOR THE EXTENSION OF SLOPES OF FILLS AND /OR CUTS
ALL FOR PUBLIC STREET PURPOSES
 IN CONNECTION WITH THE PROPOSED IMPROVEMENT OF
BARRINGTON AVENUE
 BETWEEN DOROTHY STREET AND DARLINGTON AVENUE
 IN THE CITY OF LOS ANGELES, CALIFORNIA
 IN ACCORDANCE WITH ORDINANCE NO. 81300.
 LLOYD ALDRICH - CITY ENGINEER MARCH 1939.



NOTES:-
 REAL PROPERTIES TO WHICH IT IS PROPOSED TO ASCERTAIN DAMAGES, IF
 ANY, SHOWN OUTLINED IN YELLOW.
 EASEMENTS AND RIGHTS OF WAY TO BE CONDEMNED FOR THE EXTENSION OF
 SLOPES OF FILLS AND /OR CUTS SHOWN THUS .
 DOTTED LINES AND DIMENSIONS SHOW PROPERTY HOLDINGS IN THOSE
 CASES WHERE THEY DIFFER FROM RECORDED SUBDIVISIONS.
 FIGURES AND LETTERS IN CIRCLES INDICATE PARCELS AS SET FORTH IN
 PARAGRAPH XIII OF THE COMPLAINT.

INDEX 21

Superior Court Case No. 443110
 Suit for Condemnation
 Filed July 21, 1938
 City of Los Angeles, Plaintiff
 Vs.
 Amanda Meta Salter, et al., Def.
 Order authorizing Plaintiff to take
 immediate possession, rendered
 Aug. 8, 1939.
 Case dismissed Feb. 2, 1940.

Right of Way No.	Improvement of
Barrington Avenue from Dorothy St.	
To Darlington Ave.	Order No. A.C. - 83735
Clerk's File 3810-32 Dist. Map 5834	U.W. Index 1143
Sewers/Storm Drains required	By
Calc. Tupper	Traced Iverson
Drawn Iverson	Chd. Snelson
Submitted April 5, 1939	Div. Dist. Engr.
Submitted April 14, 1939	Deputy Engr.
Approved April 17, 1939	City Engineer

P. W. A. PROJECT NO. 1644-F, UNIT NO. 18

A-6571

