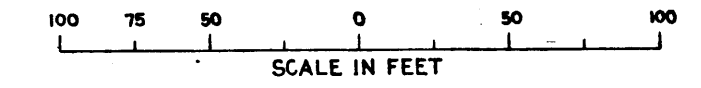


MAP
 SHOWING REAL PROPERTIES TO BE CONDEMNED
 FOR PUBLIC STREET PURPOSES
 ALSO
 SHOWING REAL PROPERTIES
 TO WHICH IT IS PROPOSED TO ASCERTAIN DAMAGES IF ANY
 WHICH WILL BE CAUSED BY THE PROPOSED IMPROVEMENT.
 ALL FOR PUBLIC STREET PURPOSES
 IN CONNECTION WITH THE PROPOSED
**OLYMPIC BOULEVARD
 IMPROVEMENT PROJECT**
 BETWEEN
 GEORGIA STREET AND THE FIRST ALLEY WEST OF BONNIE BRAE STREET
 IN THE CITY OF LOS ANGELES, CALIFORNIA
 IN ACCORDANCE WITH ORDINANCE NO. 81571
 LLOYD ALDRICH CITY ENGINEER AUGUST 1939

INDEX 3



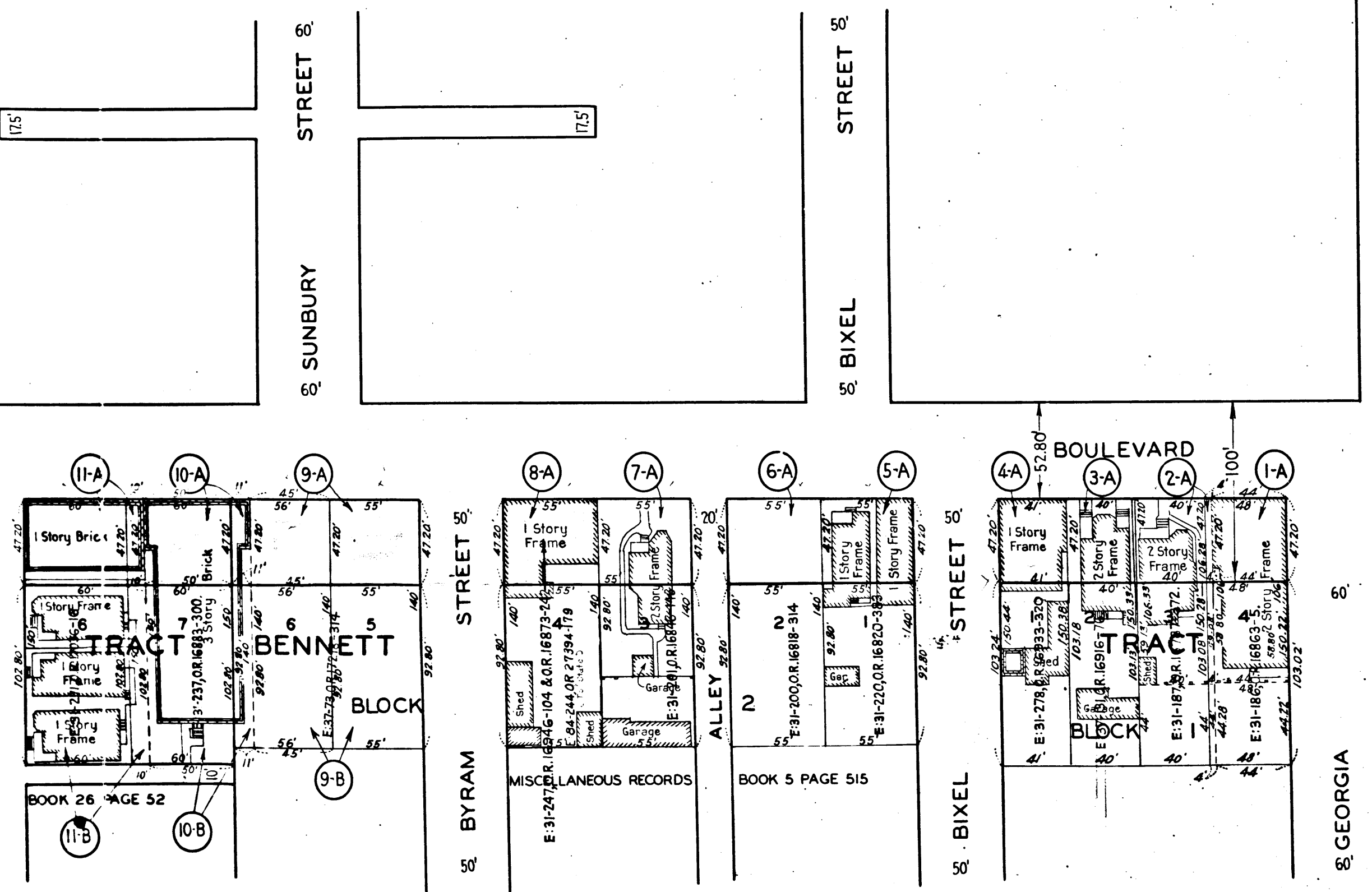
- NOTES:
1. Land to be condemned for public street purposes shown colored red.
 2. Real properties to which it is proposed to ascertain damages if any shown outlined in yellow.
 3. Dotted lines and dimensions show property holdings in those cases where they differ from recorded subdivisions.
 4. Figures and letters in circles indicate parcels as set forth in paragraph XIII of the complaint.

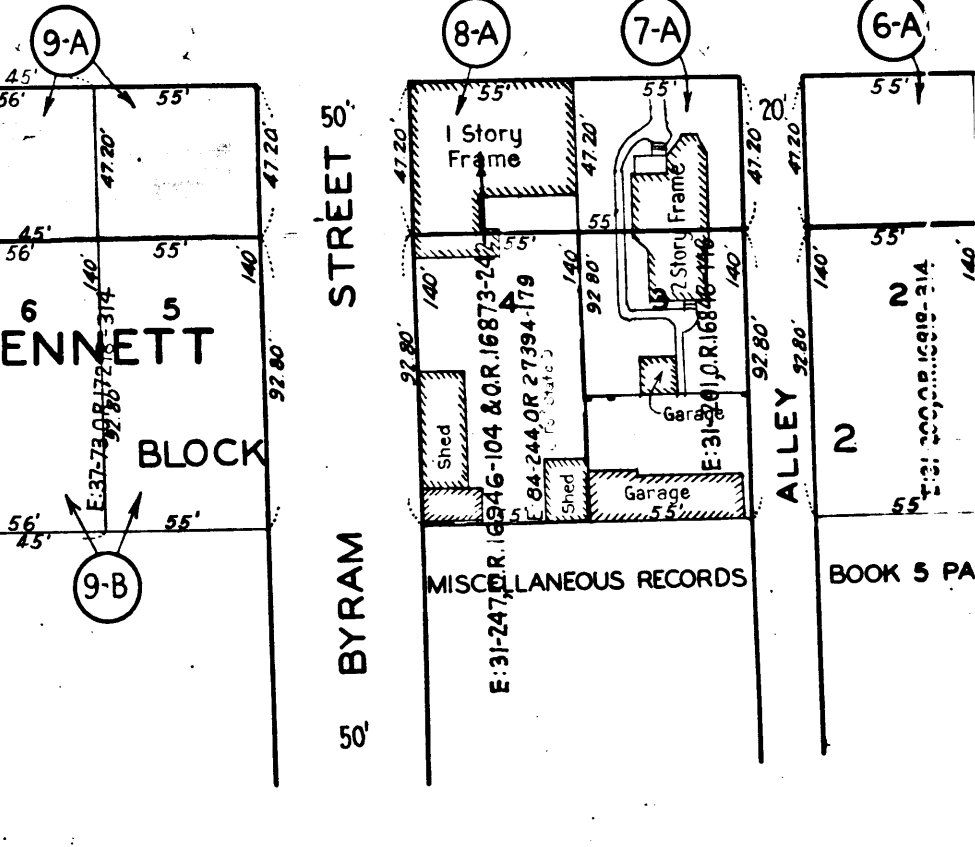
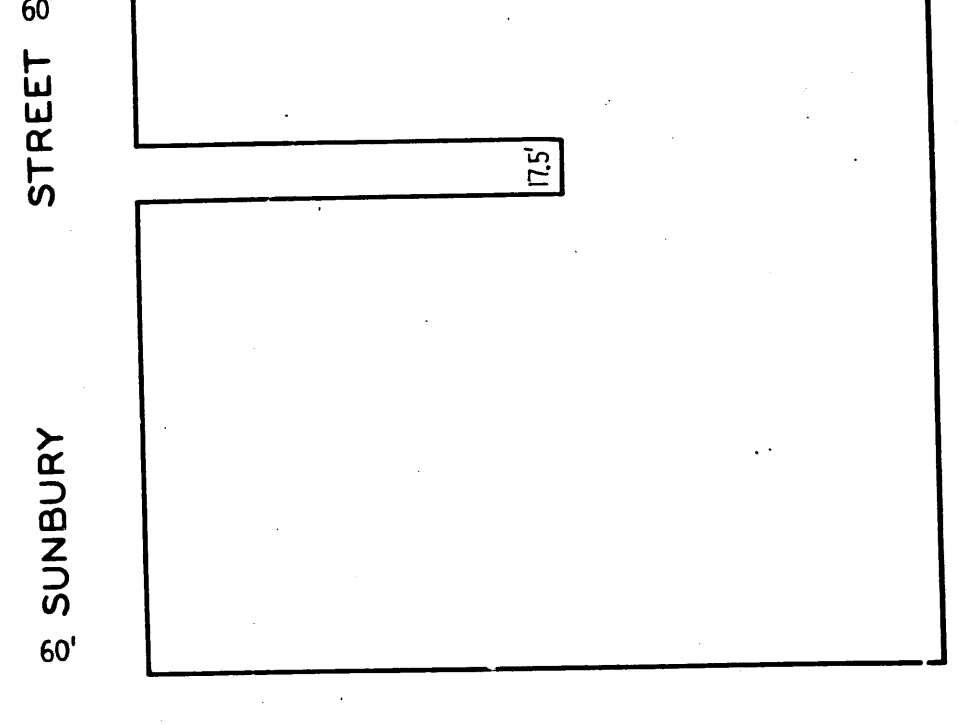
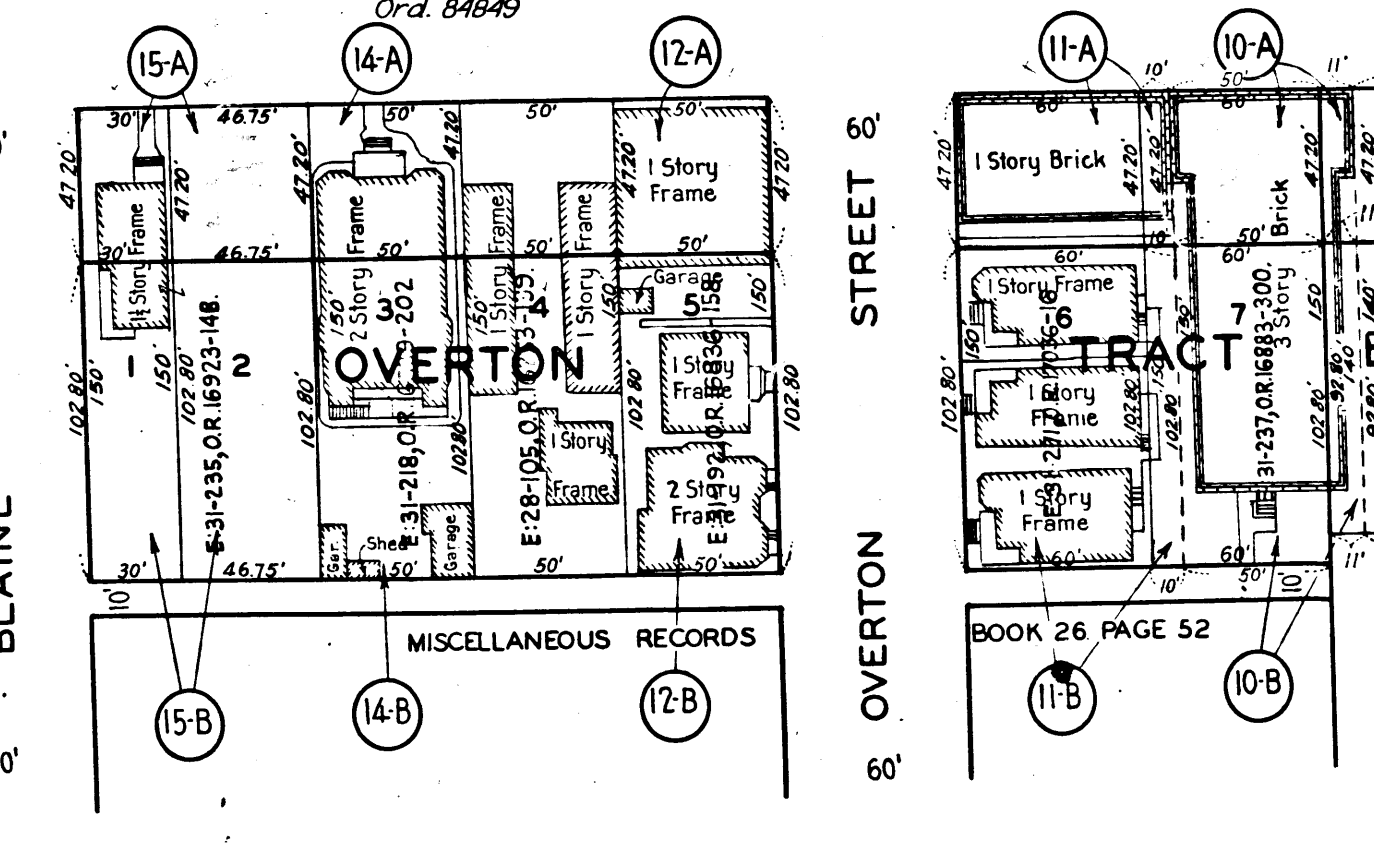
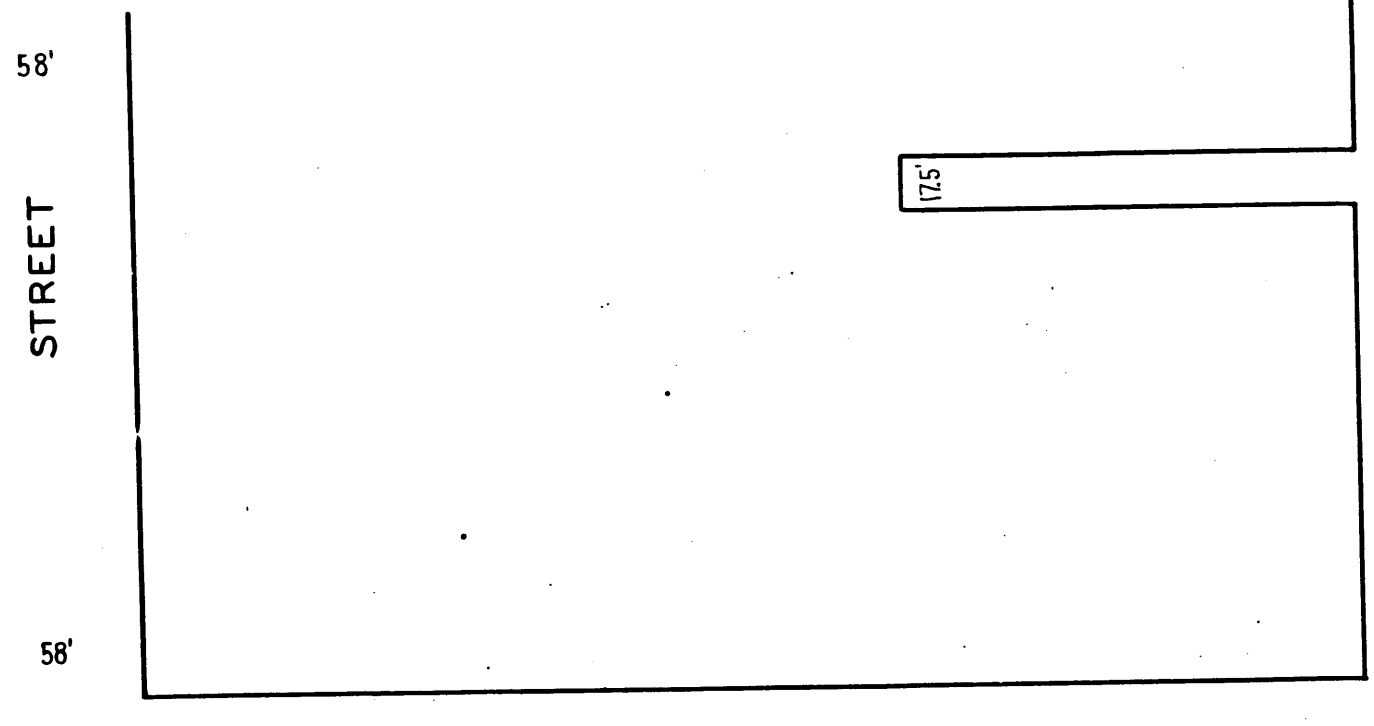
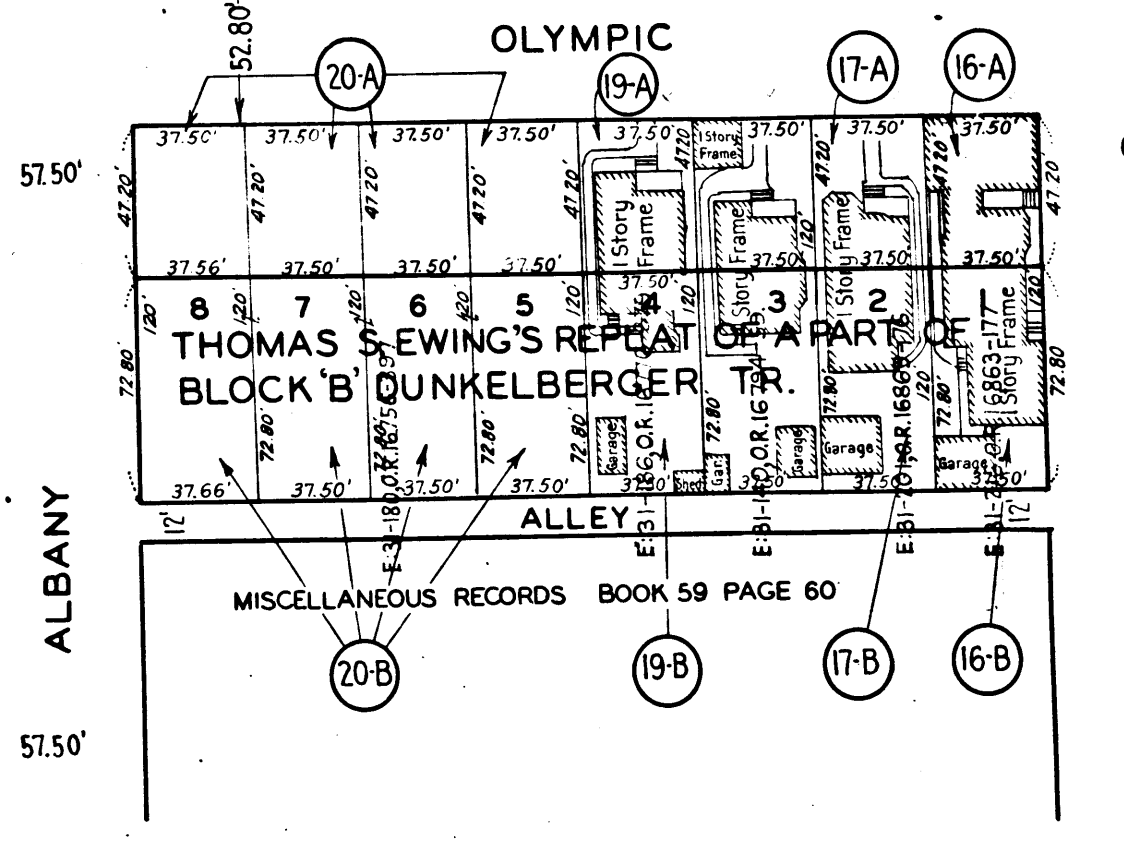
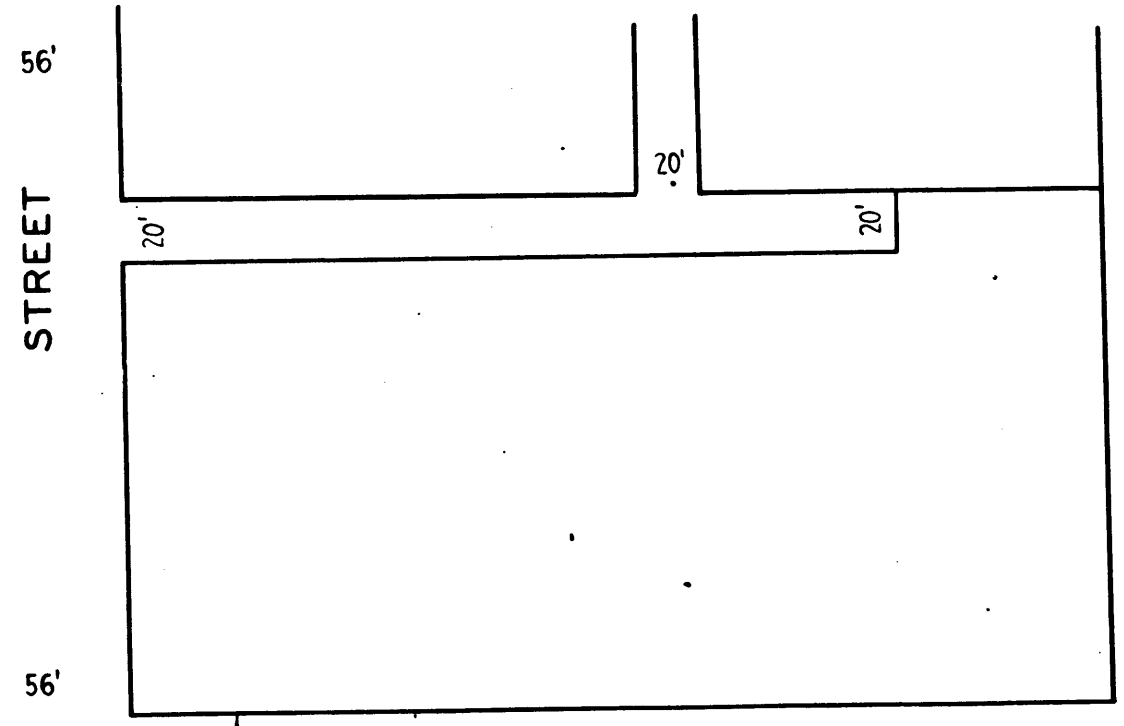
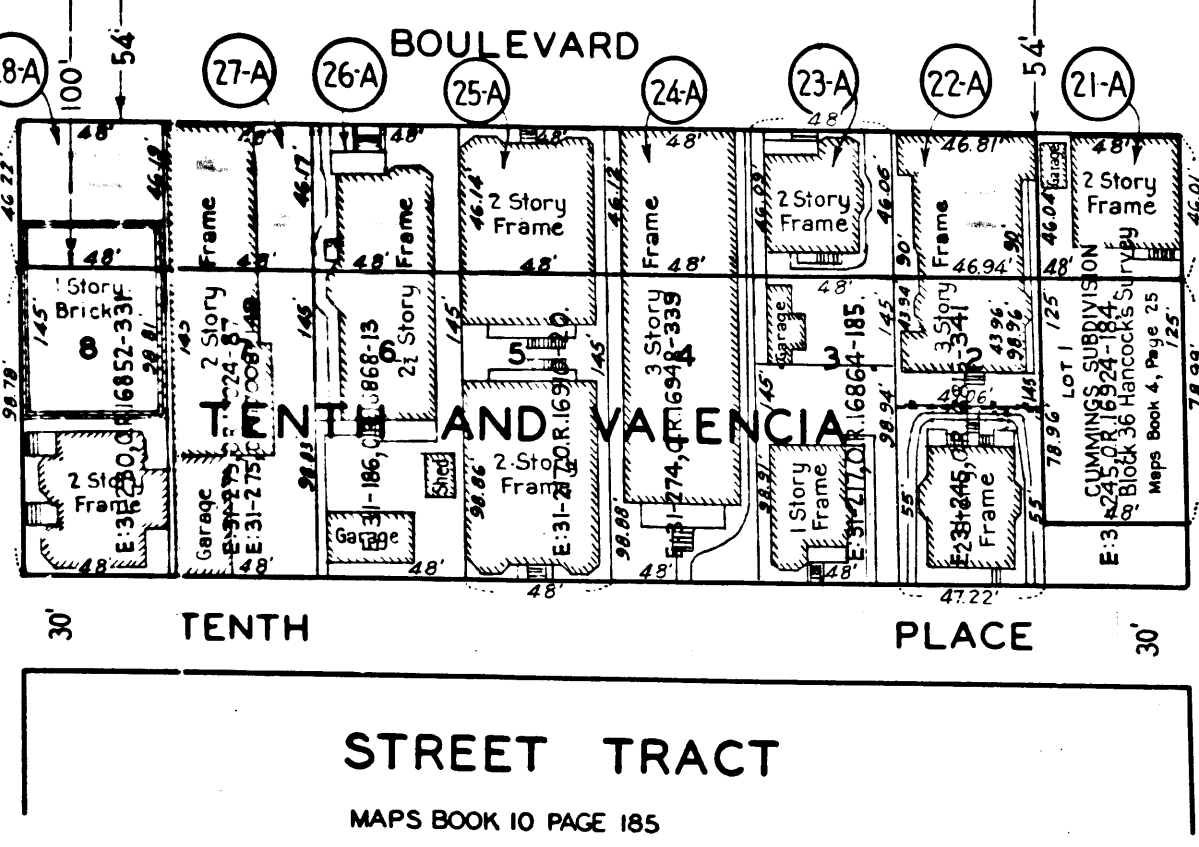
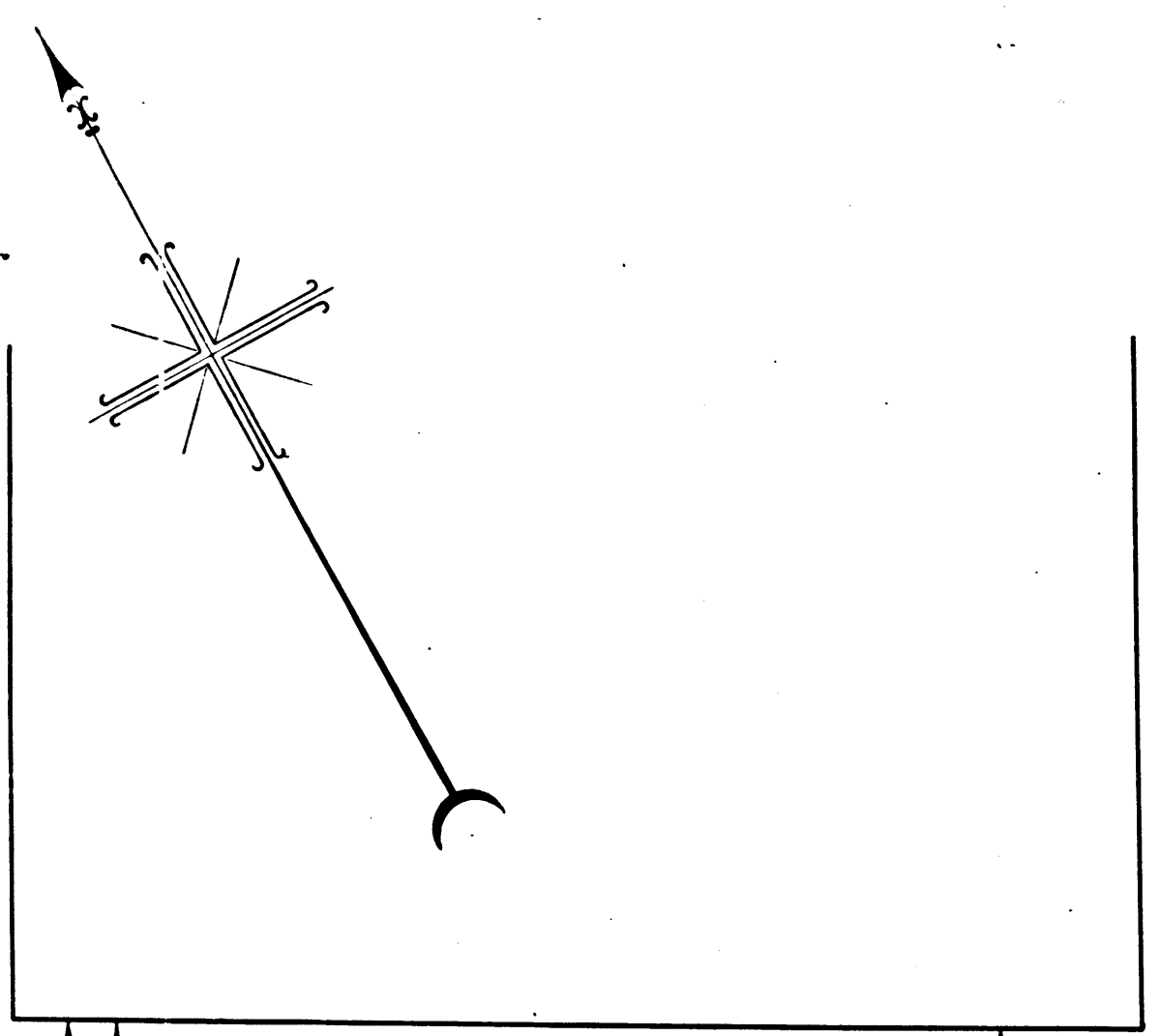
Superior Court Case No. 444560
 Suit for Condemnation
 Filed Sept. 8, 1939
 City of Los Angeles, Plaintiff
 Vs
 Anita Tabb, et al, Defendants
 Order authorizing Plaintiff to take immediate possession of parcels 4A, 31.1 A, 33 A and 34 A, rendered Oct. 26, 1939.
 Case dismissed as to parcels 4A, 33A and 34A on Jan. 9, 1940.
 Int. judg. as to parcel 31.1A, rendered May 29, 1941. J.B. 1158-71.
 Final judgment as to parcel 31.1A rendered in favor of Plaintiff April 22, 1942. - E-55112 OR.19276308
 Case dismissed as to parcels 9A, 9B, 27A, Jan. 18-1942
 Case dismissed as to parcels 1A, 2A, 3A, 5A, 6A, 7A, 8A, 10A, 10B, 11A, 11B, 12A, 12B, 14A, 14B, 15A, 15B, 16A, 16B, 17A, 17B, 19A, 19B, 20A, 20B, 21A, 22A, 24A, 25A, 26A, 28A, 30A, 31A, 35A, 35B, 43A, 43B, 23A Jul. 15-1942

Right of Way No.	Improvement of OLYMPIC BLVD.-Georgia St. to Alley W. of Bonnie Brae St.		
Order No.	83551		
Clerk's File	Dist. Map 5521	Dw. Index	111, 112
Sewers/Storm Drains	required 19 By		
Calc.	Traced Mueller Drawn Chd. Rowe		
Submitted	Aug. 22 1939	Dw. Dist. Engr.	W. J. [Signature]
Submitted	Aug. 23 1939	Deputy Engr.	[Signature]
Approved	Aug. 23 1939	City Engineer	Lloyd Aldrich

C.F. 2097-

A-6595
 NEG. 417

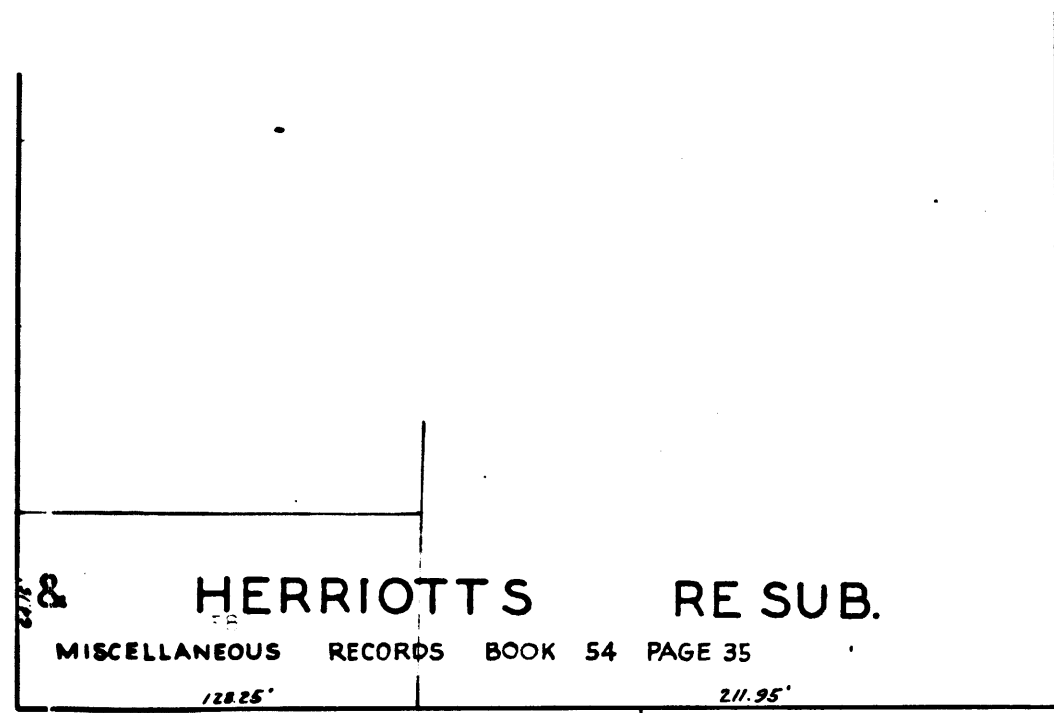




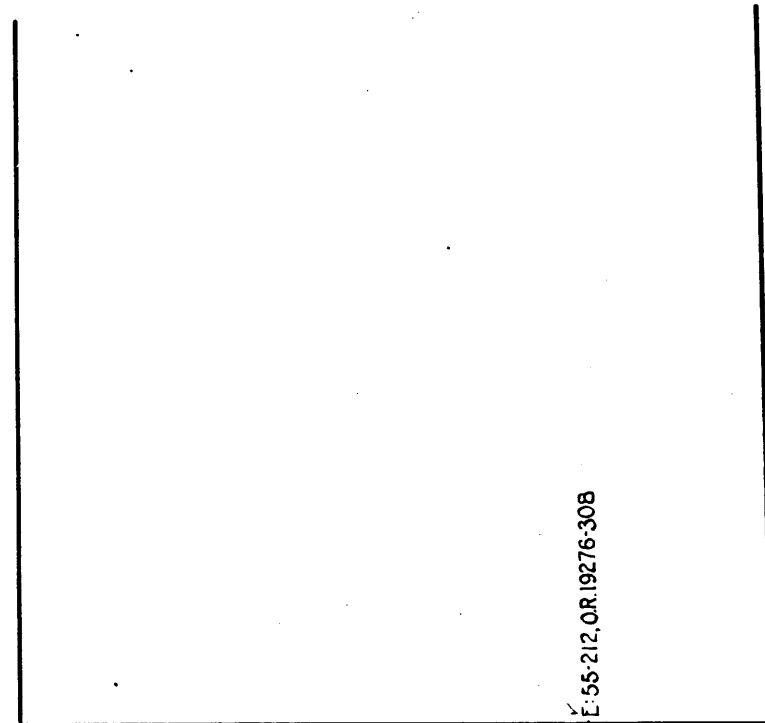
2

C.F. 2097-

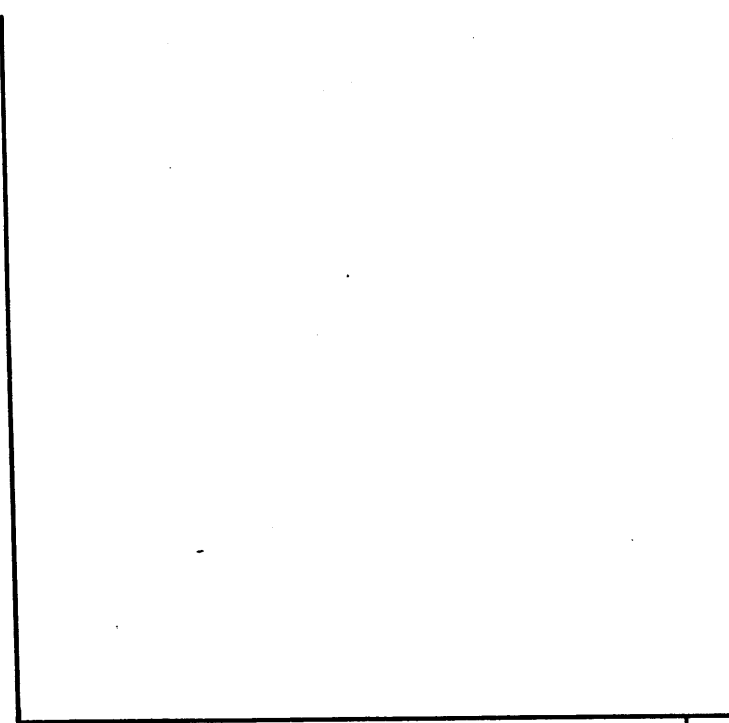
80' AVENUE



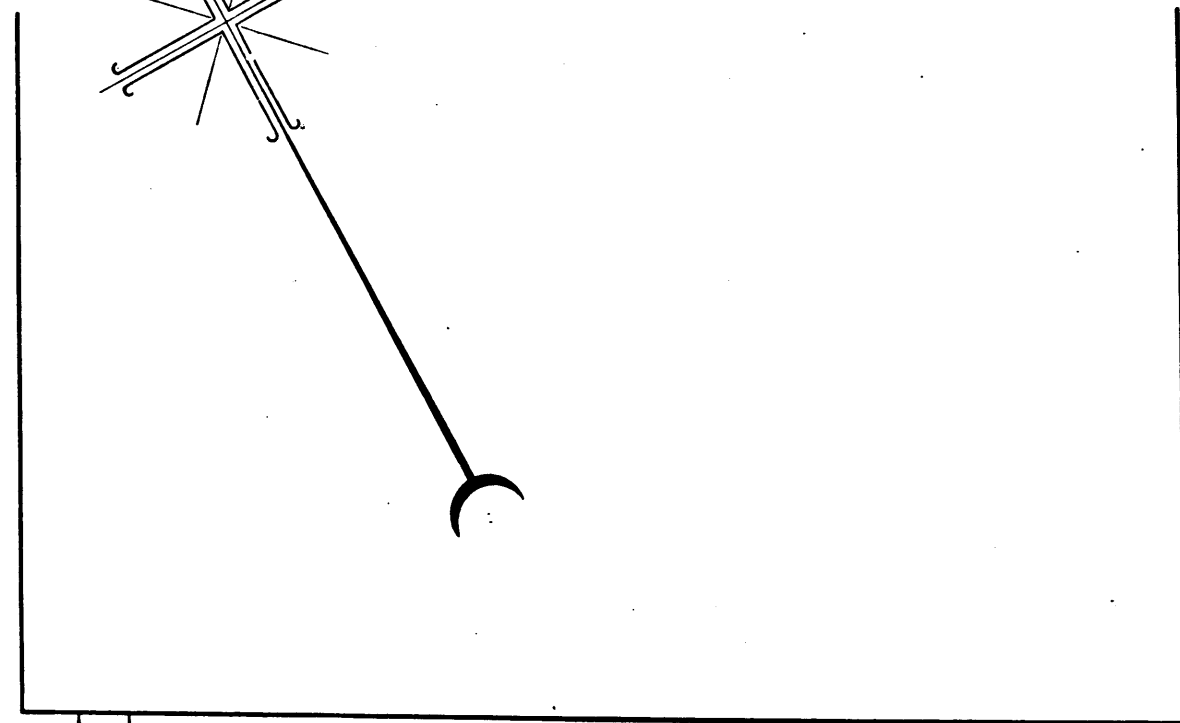
65' AVENUE



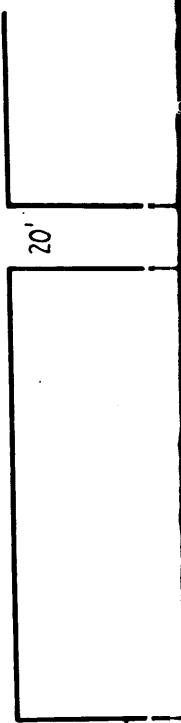
60' STREET



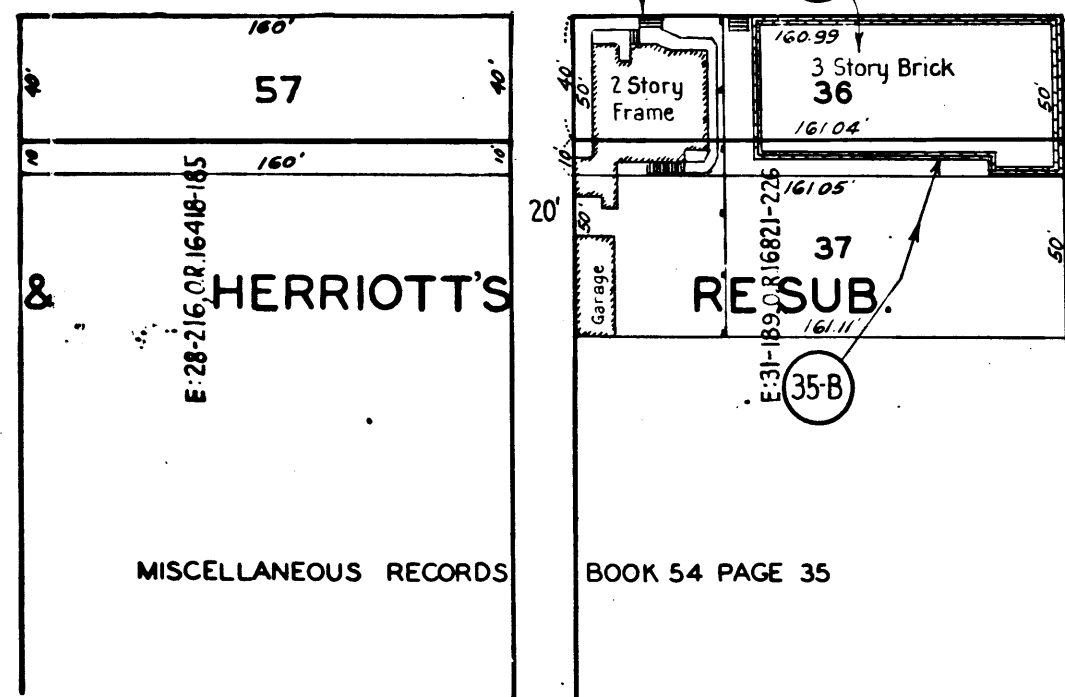
60' STREET



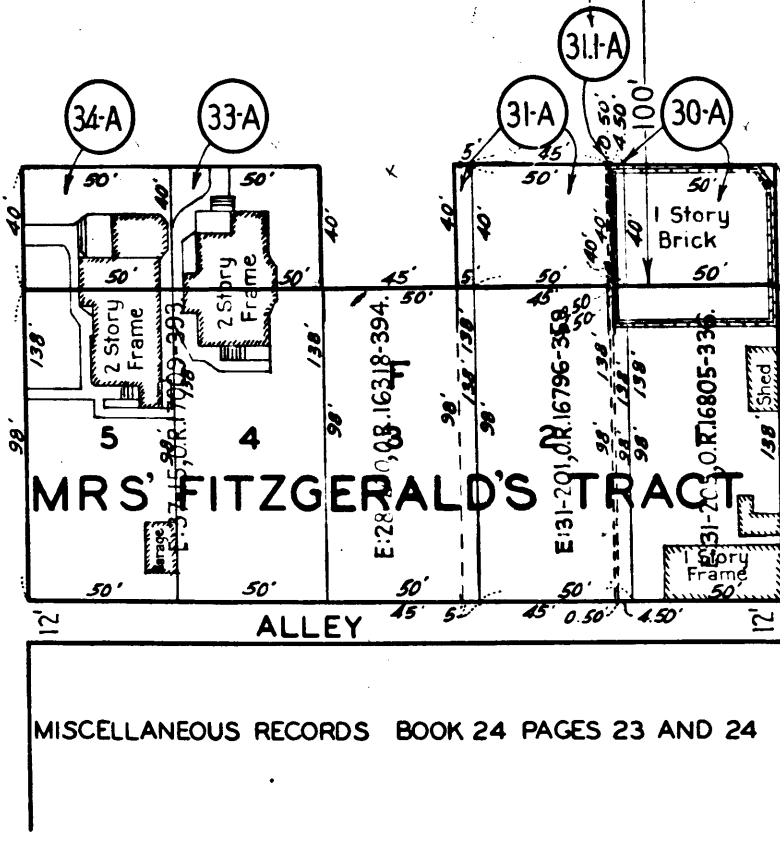
56' STREET



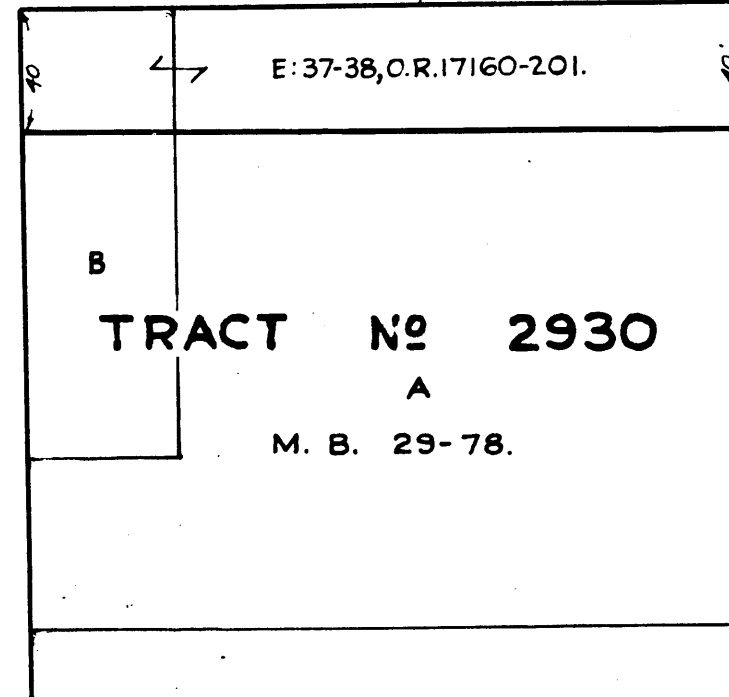
Ord. 84849



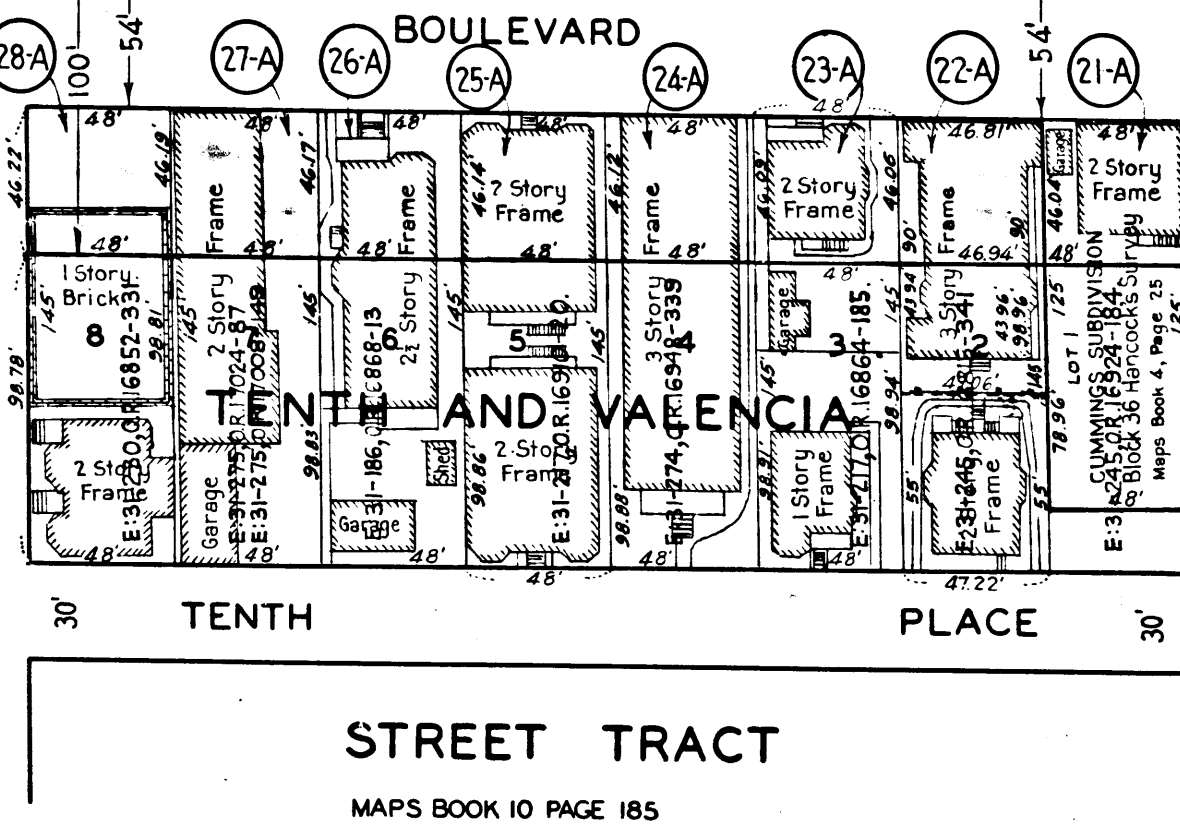
65' UNION



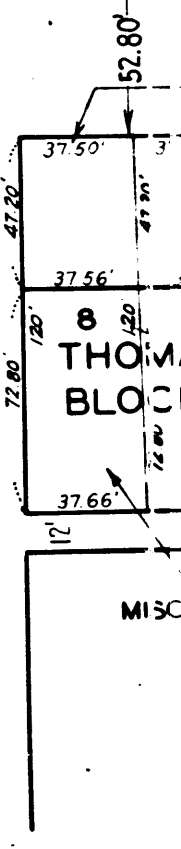
60' GRATTAN



60' VALENCIA

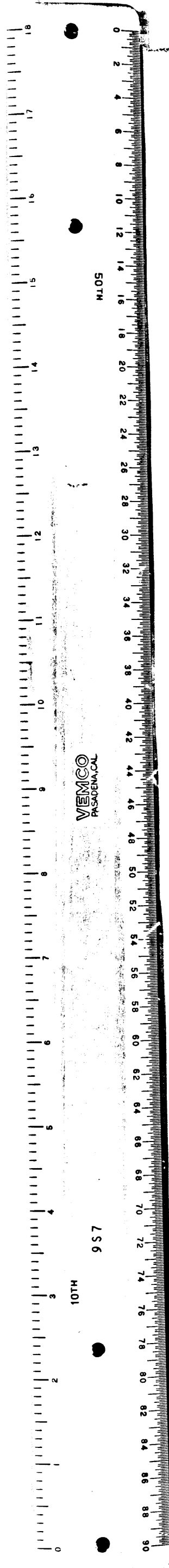


57.50' ALBANY



3

C.F. 2097-

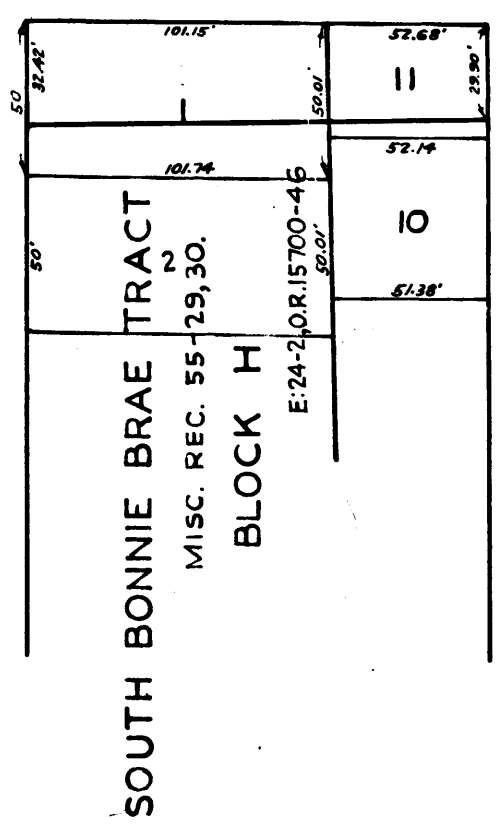


2023-A

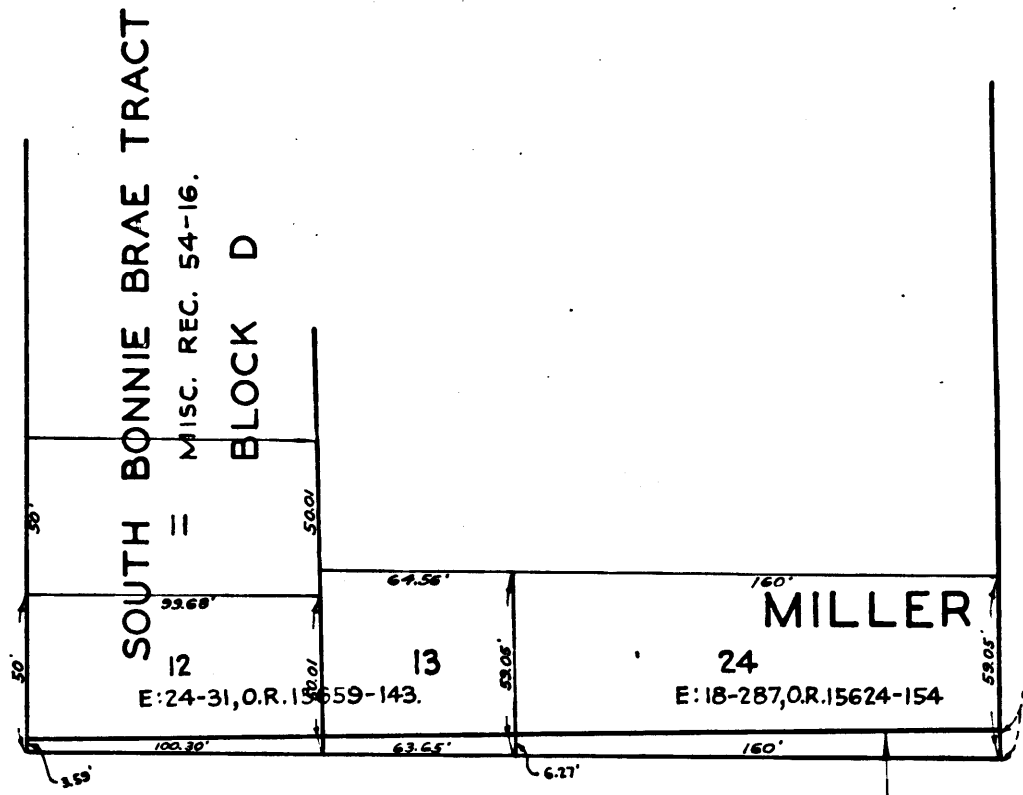
OFFICE OF THE CLERK OF SUPERIOR COURT
CITY OF LOS ANGELES

2023-A

82 BURLINGTON



AVENUE 82

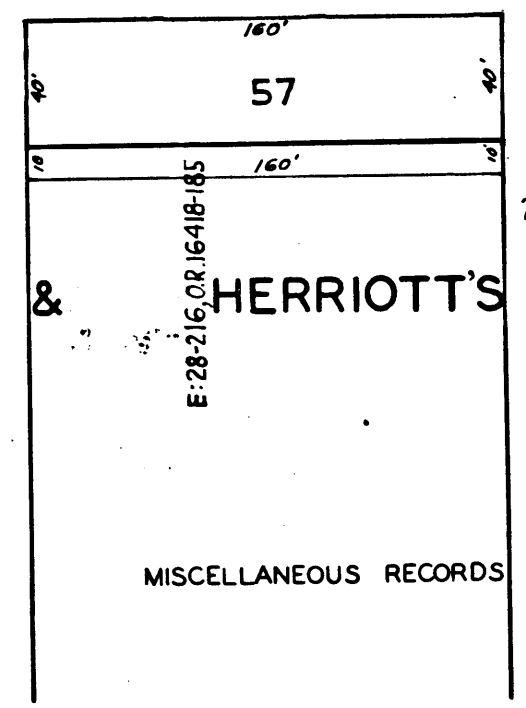


80 BEACON

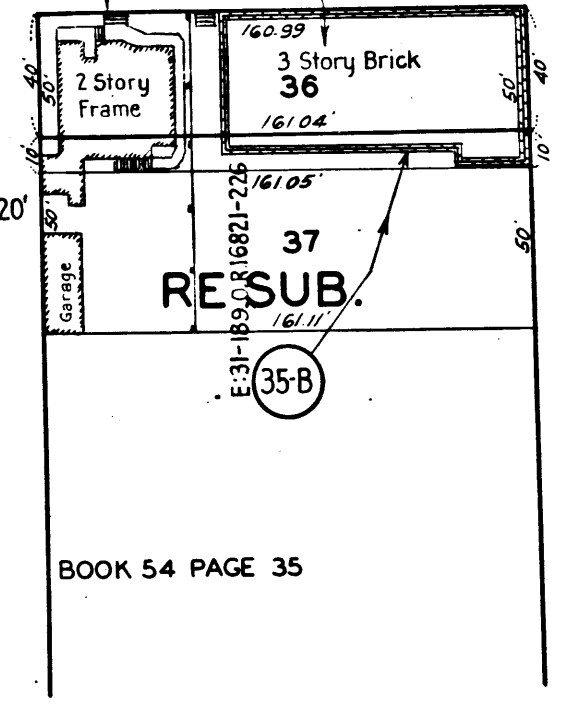
AVENUE 80

C.F. 2097-

4



Ord. 84849



65 UNION

AVENUE 65

MISCE

MR

34