

0020-A

0020-A

0020-A

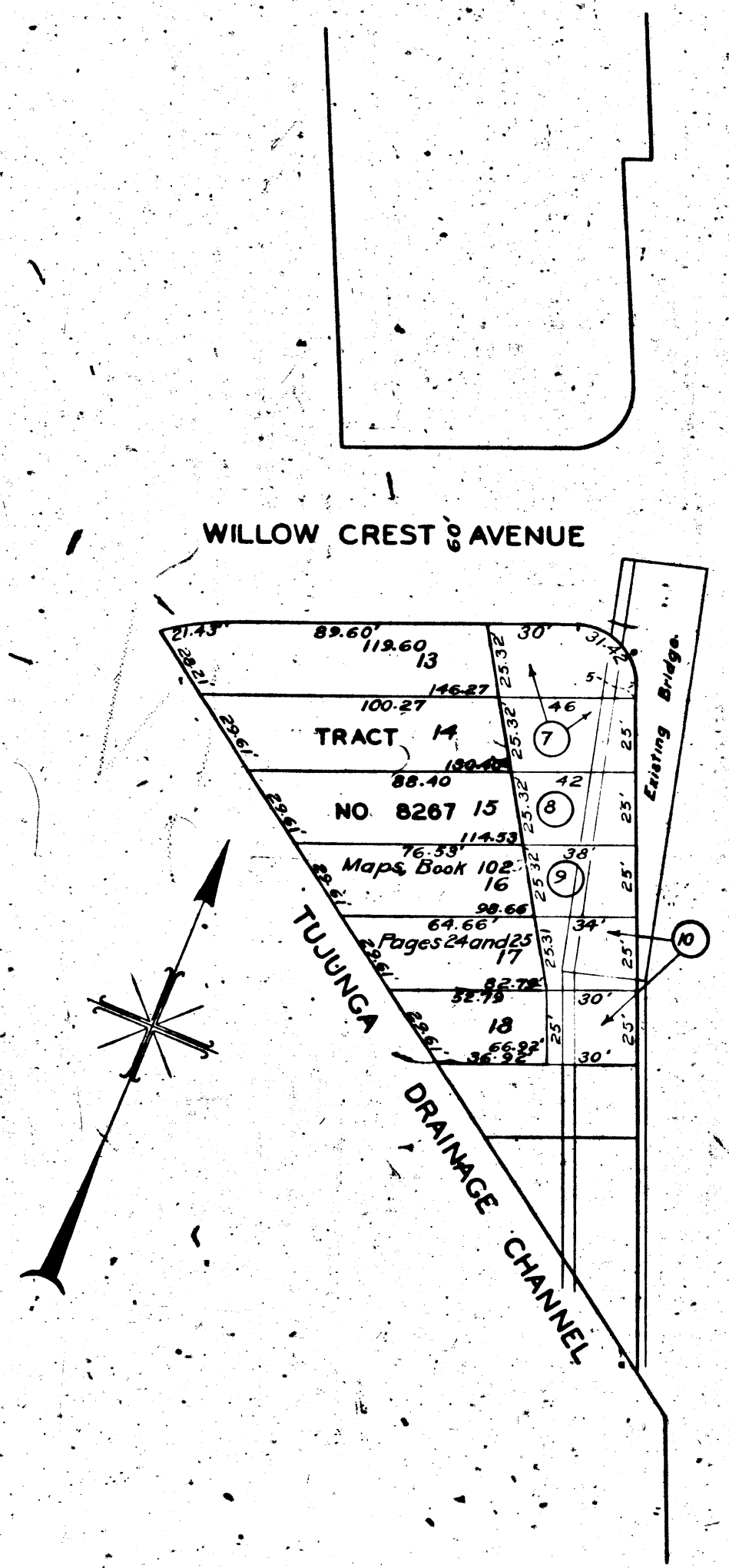
0020-A

MAP
 SHOWING LAND TO BE CONDEMNED
 FOR PUBLIC STREET AND PUBLIC BRIDGE PURPOSES
 FOR THE WIDENING AND LAYING OUT OF
LANKERSHIM BOULEVARD
 ADJACENT TO THE WESTERLY SIDE THEREOF
 BETWEEN WILLOW CREST AVENUE AND A POINT
 APPROXIMATELY 150 FEET SOUTHERLY THEREFROM

IN THE CITY OF LOS ANGELES, CALIFORNIA
 IN ACCORDANCE WITH ORDINANCE NO 81650.
 LLOYD ALDRICH CITY ENGINEER SEPTEMBER 1939



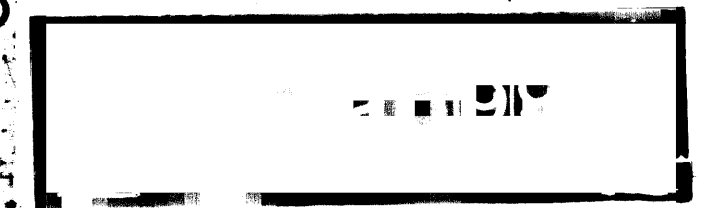
- Notes:
 1. Land to be condemned shown colored red.
 2. Figures in circles indicate parcels as set forth in paragraph IX of the complaint.



Superior Court Case No. 445103
 Suit for Condemnation
 Filed Sept. 27, 1938
 City of Los Angeles, Plaintiff
 Vs
 Kathryn Mascotti, et al., Def.
 Order authorizing Pltff. to take
 immediate possession, rendered
 Oct. 26, 1939.
 Int. judg. as to parcels 8 and 9, ren-
 dered Apr. 15, 1940. J. B. 1071-249.
 Final judgment in favor of Pltff. as
 to parcels 8 and 9 rendered Dec. 15,
 1941.
 E 55-74: O.R. 19039-110.
 Case dismissed as to parcels 7, 10 Jun 2-43

Right of Way No.	-4963	Improvement of
Lankershim Boulevard Bridge over Los Angeles River		
Clerk's File	1653-32 Dist. Map 7349	Order No. 79900
Sewers/Storm Drains	required	19 By
Car. Sweet	Traced Sweet	Drawn
Submitted	Sept 15 1939	Div. Dist. Engr. F.W. Thompson
Submitted	Sept 18 1939	Deputy Engr. Lloyd Aldrich
Approved	Sept 19 1939	City Engineer

A-6596



FILED IN THE OFFICE OF THE CLERK OF THE SUPERIOR COURT OF THE COUNTY OF LOS ANGELES, CALIFORNIA