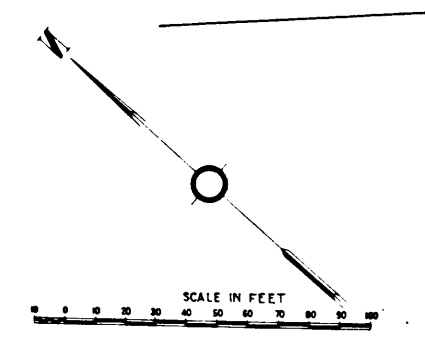


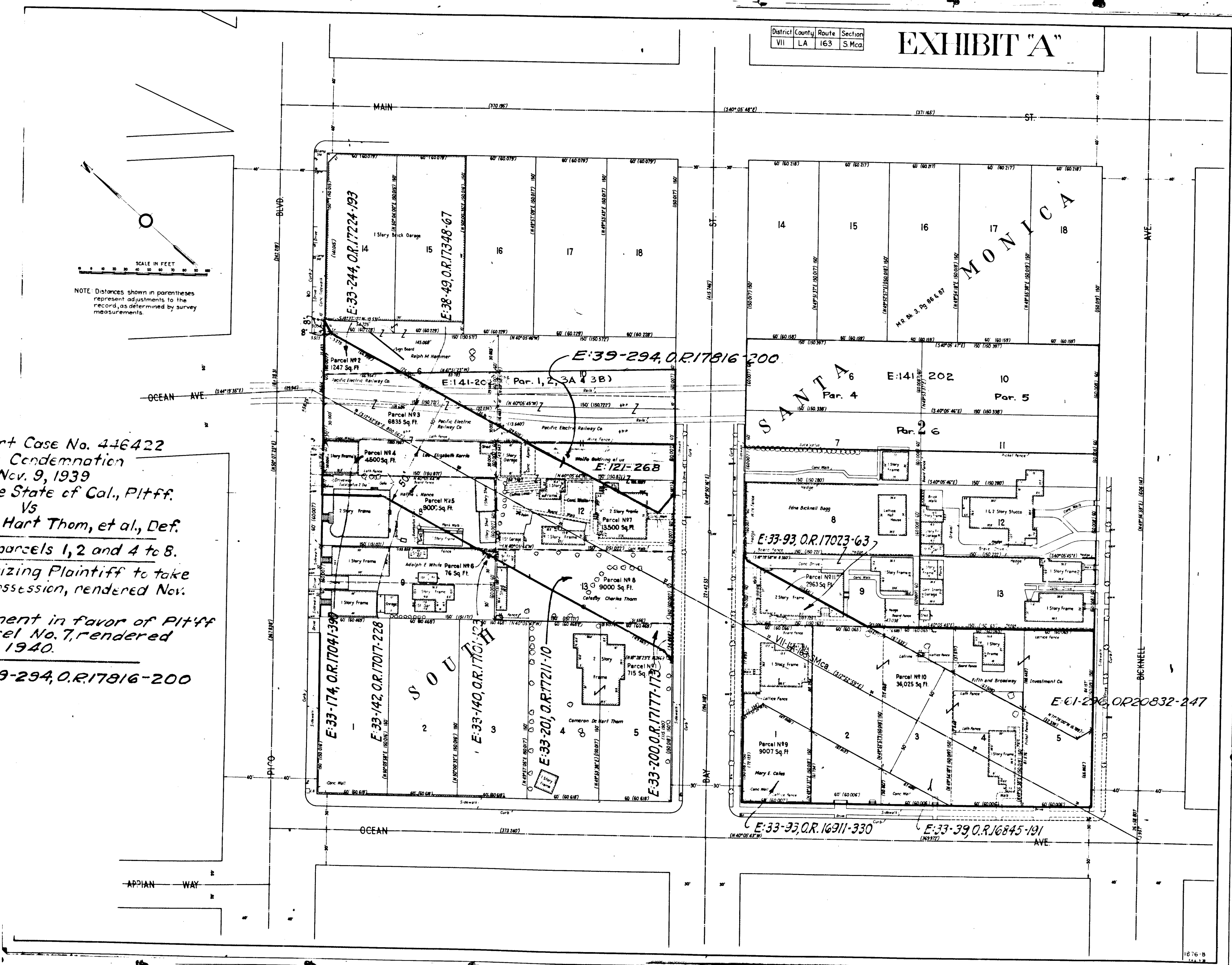
District	County	Route	Section
VII	LA	163	S.McC

EXHIBIT "A"



Superior Court Case No. 446422
 Suit for Condemnation
 Filed Nov. 9, 1939
 People of the State of Cal., Pltff.
 Vs
 Cameron De Hart Thom, et al, Def.
 Suit covers parcels 1, 2 and 4 to 8.
 Order authorizing Plaintiff to take
 immediate possession, rendered Nov.
 9, 1939.
 Final judgment in favor of Pltff
 as to parcel No. 7, rendered
 August 23, 1940.

E:39-294, O.R.17816-200



C.F. 2105 -

INDEX 21