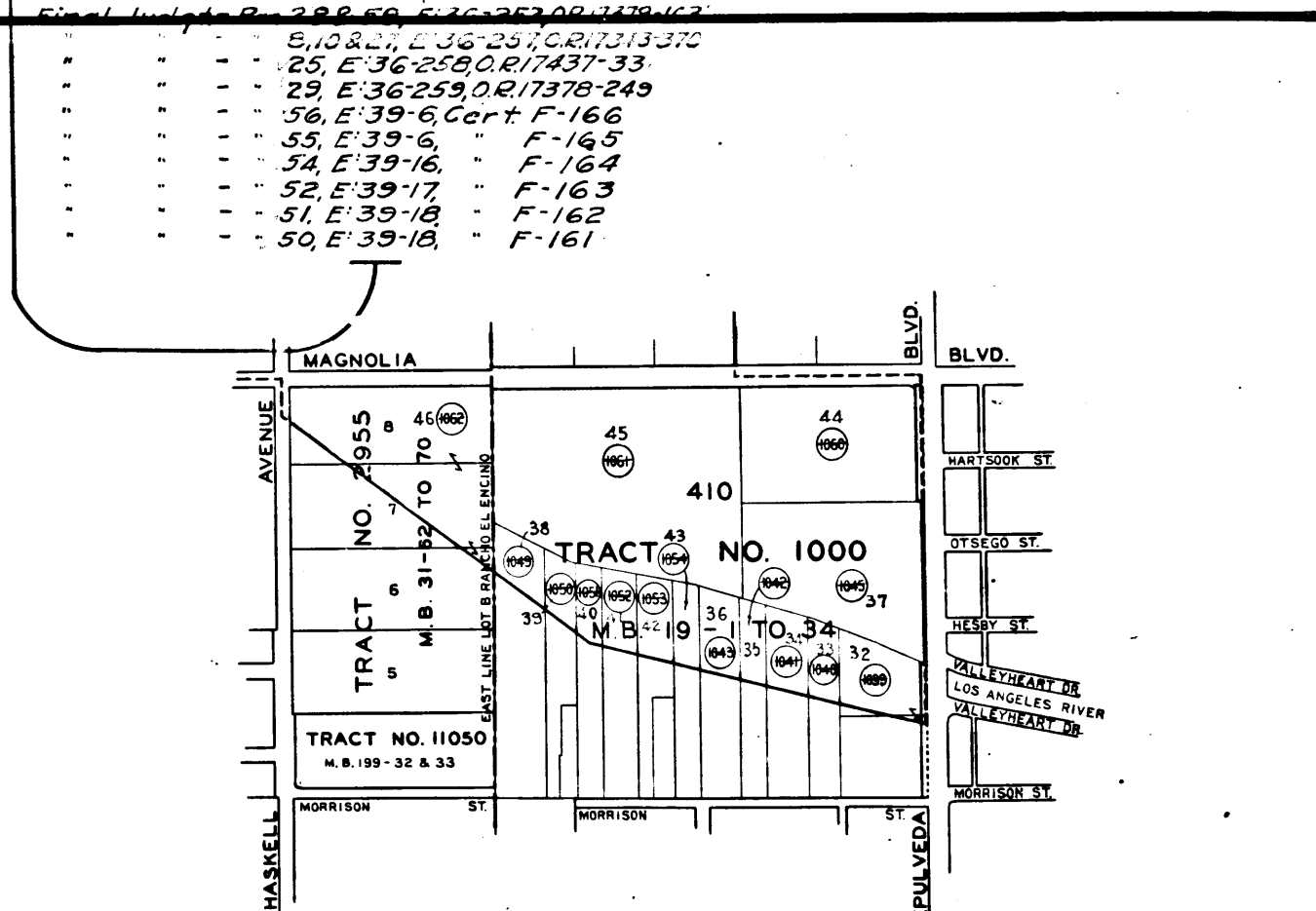
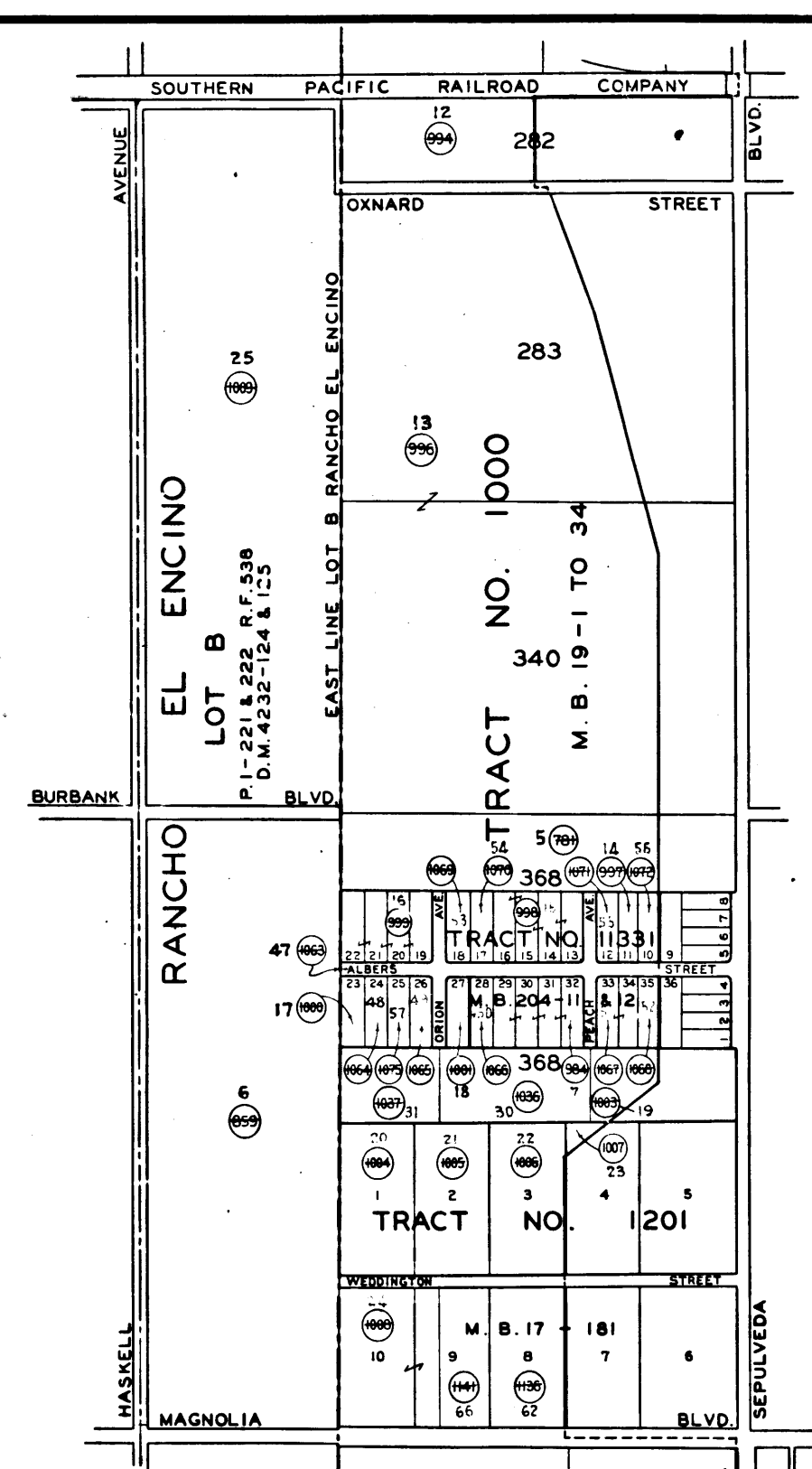
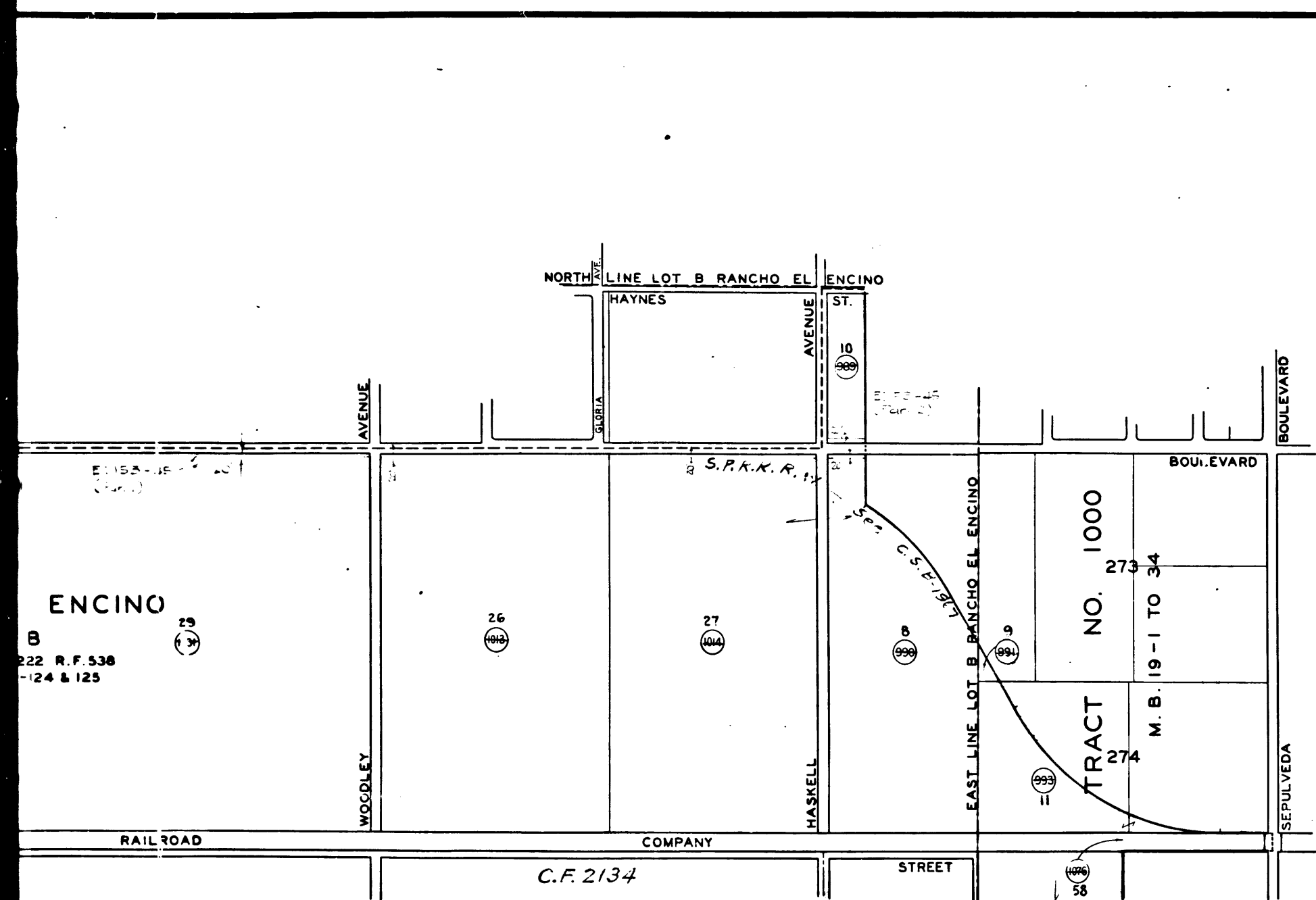


Final Judgment - Par 49, E:39-19, Cert. F-160
 48, E:39-20, " F-159
 7, 14, 15, 16, 17, 18, 47, 53, 85, 7, E:39-37
 11, E:22-272, O.R. 17364-288
 30, E:43-47, Cert. P-195, Sec. 16099-1
 5, 19, 31, E:43-48, " P-196, " 16100-1
 6, E:43-53, O.R. 18046-392
 9, E:43-214, O.R. 18151-324
 166, E:43-273, O.R. 18268-215
 65, E:43-274, O.R. 18272-207
 39, E:47-131, O.R. 18411-165
 3, 4, 13, 20, 22, 24, 26, 32 } E:56-160, O.R. 19014-50
 33, 34, 35, 36, 38, 40, 41, 42, 43 }
 46, 60, 62, 63 }
 Final Judgment - Par 61, E:63-13, O.R. 20092-94
 58, E:63-135, O.R. 20061-357
 Final Judgment - Par 21, E:63-295, Co-3-21

District Court Case No. 657 R-J-Civil
 in and for the Southern District of California, Central Division
 Suit for Condemnation
 Filed Nov. 10, 1939
 United States of America, Plaintiff
 Vs
 Certain Parcels of Land in the Co. of L.A., State of Cal., W.J. Petit, et al., Def.

Order authorizing Plaintiff to take immediate possession, rendered Nov. 10, 1939.
 Final judgment - Par 45, E:36-246, O.R. 17324-373
 37, E:36-247, O.R. 17346-284
 44, E:36-248, O.R. 17346-285
 12, E:36-249, O.R. 17347-276
 23, E:36-249, O.R. 17344-378
 11, E:36-250, O.R. 17396-141
 64, E:36-251, O.R. 17346-279
 Final Judgment - Par 288, E:36-252, O.R. 17396-142

5, 10, 25, E:36-257, O.R. 17337-376
 25, E:36-258, O.R. 17437-33
 29, E:36-259, O.R. 17378-249
 56, E:39-6, Cert. F-166
 55, E:39-6, " F-165
 54, E:39-16, " F-164
 52, E:39-17, " F-163
 51, E:39-18, " F-162
 50, E:39-18, " F-161



For vacation of streets see Ord. 88533

INDEX 55

REFERENCES	DATE	REVISIONS	DESCRIPTION
C. I. 55			
19-RW 11.1 (INDEX)			
19-RW 11.2	11-6-39		R/W ALIGNMENT REVISED AS OF
19-RW 11.3			10-20-39 PARCELS 990, 991 & 993
19-RW 11.4			REVISED, PARCELS 992 & 1028 REMOVED.
19-RW 11.7			PARCEL 989 ADDED.
19-RW 11.10	12-14-39		SEPULVEDA BLVD. WIDENED.
19-RW 11.14			
19-RW 11.16			
19-RW 11.18			
19-RW 11.20			

LOS ANGELES COUNTY
 FLOOD CONTROL DISTRICT
 CONDEMNATION MAP
 LOS ANGELES RIVER
 SEPULVEDA FLOOD CONTROL BASIN
 FIRST ACQUISITION

APPROVED BY: *H. H. Hedger* 9/14/39
 CHIEF ENGINEER

RECOMMENDED BY: *W. J. Pettit* 9/14/39
 JUNIOR ASSISTANT CHIEF ENGINEER

SCALE: 1" = 600'
 DATE: 9-13-39
 NO. 49-ML 57
 SHEET OF

NEG. 426

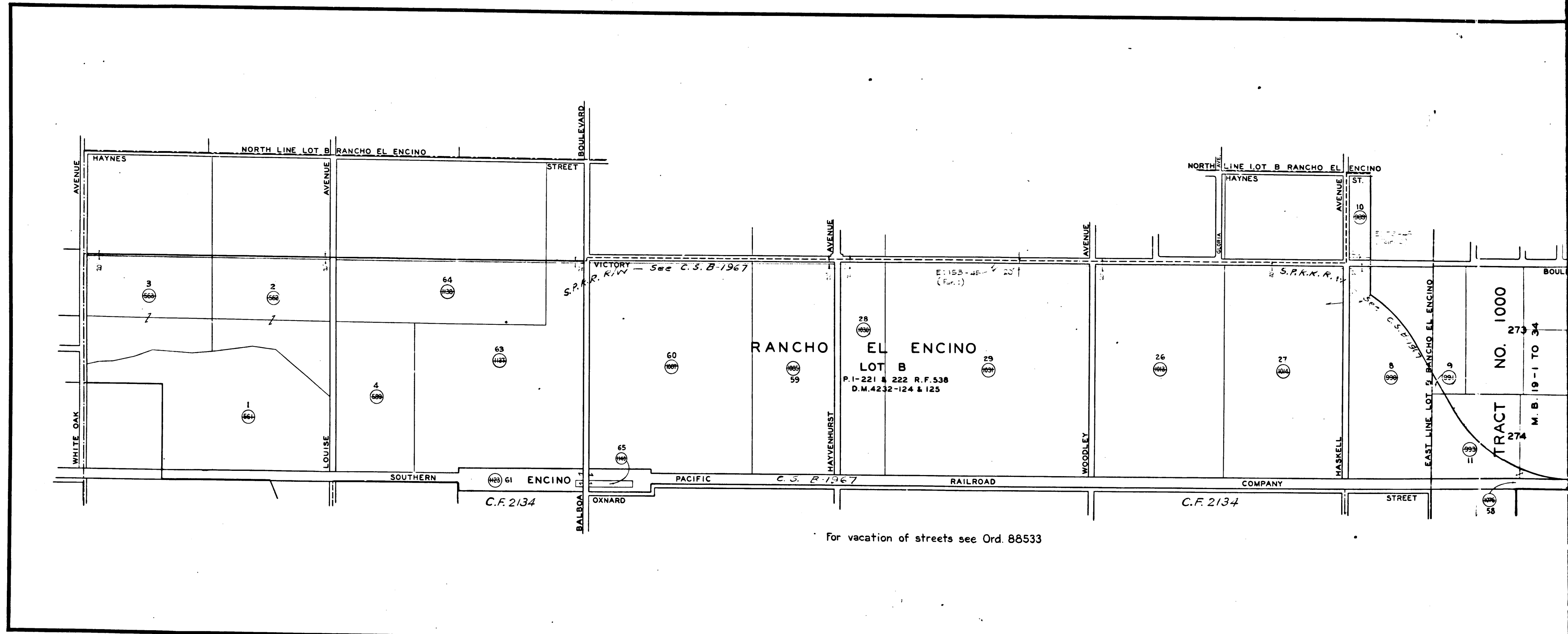
C.F. 2109 -

12 JM-81

12 JM-81

TS JM-01

TS JM-01



For vacation of streets see Ord. 88533

12

C.F. 2109-