

CITY OF SOUTH PASADENA  
 RIGHT OF WAY MAP

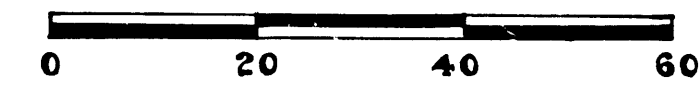
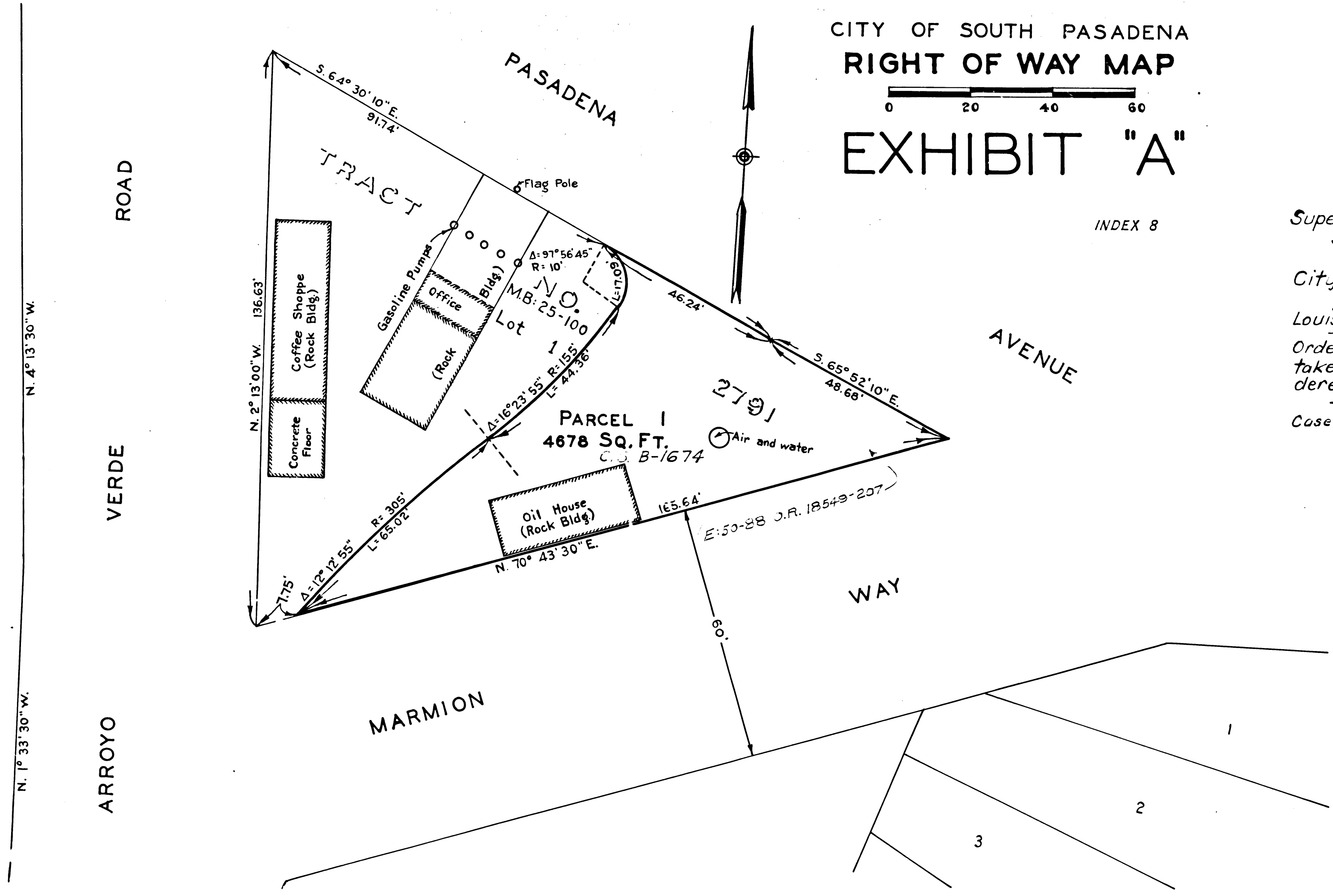


EXHIBIT "A"

INDEX 8

Superior Court Case No. 448114  
 Suit for Condemnation  
 Filed Jan. 10, 1940  
 City of South Pasadena, Pltff.  
 Vs  
 Louise Butler Blair, et al., Def.  
 Order authorizing Plaintiff to  
 take immediate possession, ren-  
 dered Feb. 26, 1940.  
 Case dismissed as to Parcel 1 Jul. 30-41



C.F. 2111 -