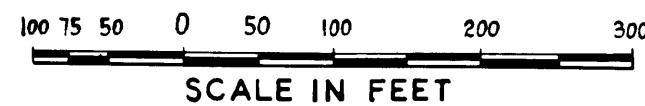


Pages 55 to 75 (inclusive)

MAP
 SHOWING REAL PROPERTIES TO BE CONDEMNED
 FOR PUBLIC STREET PURPOSES
 ALSO
 SHOWING REAL PROPERTIES
 TO WHICH IT IS PROPOSED TO ASCERTAIN DAMAGES IF ANY
 WHICH WILL BE CAUSED BY THE PROPOSED IMPROVEMENT
 ALSO
 SHOWING EASEMENTS AND RIGHTS OF WAY TO BE CONDEMNED
 FOR THE CONSTRUCTION OF STORM DRAINS AND FOR THE EXTENSION
 OF SLOPES OF FILLS AND CUTS
ALL FOR PUBLIC STREET PURPOSES
 IN CONNECTION WITH THE PROPOSED
VENTURA BOULEVARD
IMPROVEMENT PROJECT
 BETWEEN
SHIRLEY AVENUE AND SERRANIA AVENUE
 IN THE CITY OF LOS ANGELES CALIFORNIA.

IN ACCORDANCE WITH ORDINANCE NO. 82136
 LLOYD ALDRICH - CITY ENGINEER JANUARY 1940



NEG. 431 SHT. 1

Notes :-

1. Land to be condemned for public street purposes shown colored red.
2. Real properties to which it is proposed to ascertain damages if any shown outlined in yellow.
3. Easements and rights-of-way to be condemned for the construction of storm drains shown thus .
4. Easements and rights-of-way to be condemned for the extension of slopes shown thus .
5. Dotted lines and dimensions show property holdings in those cases where they differ from recorded subdivisions.
6. Figures and letters in circles indicate parcels as set forth in paragraph XVI of the complaint.

INDEX 57

Right of Way No. 20021	Improvement of
VENTURA BOULEVARD - TOPEKA DRIVE TO SERRANIA AVENUE.	
Clerk's File	Order No. 89754
<small>094-25-26-27-29 922-23-24-25-26-28-29-30-31-32-33-34-35-36-37-38-39-40-41-42-43</small>	
Sewers/Storm Drains	required 19 By
Calc. <i>Sully</i>	Traced <i>Kuhn</i> Drawn <i>Kuhn</i> Ckd. <i>Rowe</i>
Submitted <i>Jan 12 1940</i>	Div. Dist. Engr. <i>Jan 12 1940</i>
Submitted <i>Jan 12 1940</i>	Deputy Engr. <i>Jan 12 1940</i>
Approved <i>Jan 12 1940</i>	City Engineer

P. W. A. PROJECT NO. 1708-F UNIT NO. 6-7

A-6613

Superior Court Case No. 448406
 Suit for Condemnation
 Filed Jan. 22, 1940
 City of Los Angeles, Plaintiff
 Vs
 Louis Armstrong, et al, Def.

Order authorizing Plaintiff to take immediate possession, rendered Jan. 22, 1940.
 Int. judg. as to parcels 15A and 15B, rendered June 24, 1940. J.B. 1084-16.
 Int. judg. as to parcels 17A and 17B, rendered Aug. 13, 1940. J.B. 1090-69.
 Int. judg. as to parcels 4A and 4B, rendered Sept. 11, 1940. J.B. 1098-210.
 Int. judg. as to parcels 14A and 14B, rendered Oct. 15, 1940. J.B. 1107-362.
 Int. judg. as to parcels 5A and 5B, rendered Dec. 4, 1940. J.B. 1117-313.
 Int. judg. as to parcels 8A and 8B, rendered Mar. 3, 1941. J.B. 1140-76.

Final judgment in favor of Pltff as to parcels 5-A & 5-B; rendered August 25, 1941

E-44-274, O.R. 1873-89

Int. judg. as to parcels 19A and 19B, rendered June 10, 1941. J.B. 1175-373.
 Final judgment as to parcels 4A, 4B, 8A, 8B, 12A, 12B, 12C, 13A, 13B, 14A, 14B, 15A, 15B, 17A, 17B, 19A & 19B rendered in favor of Pltff Aug. 17, 1942

E:55-289 OR19581-11

Case Dismissed as to Parcels 1-A, 1-B, 1-C, 1-D, 6-A, 6-B, 9-A, 9-B, 10-A, 10-B, 10-C, 10-D, 11-A, 11-B, 11-C, 20-A and 20-B, on August 12, 1942.

Final Judgment in favor of Pltff. as per parcels 2A, 2B, 2C, 16A, 16B, 18A, 18B. Dec 8-1943
 E-59-225, OR20547-149

Final Judgment in favor of Pltff. as to parcels 10A, 10B, 10C, 10D, 11A, 11B, 11C rendered Jan. 3, 1944
 E-59-230, OR 20570-208

Case Dismissed as to Parcels 10A, 10B, 10C, 10D, 11A, 11B, 11C on July 1942

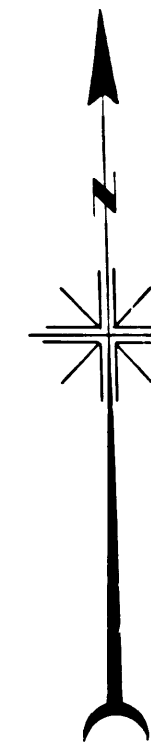
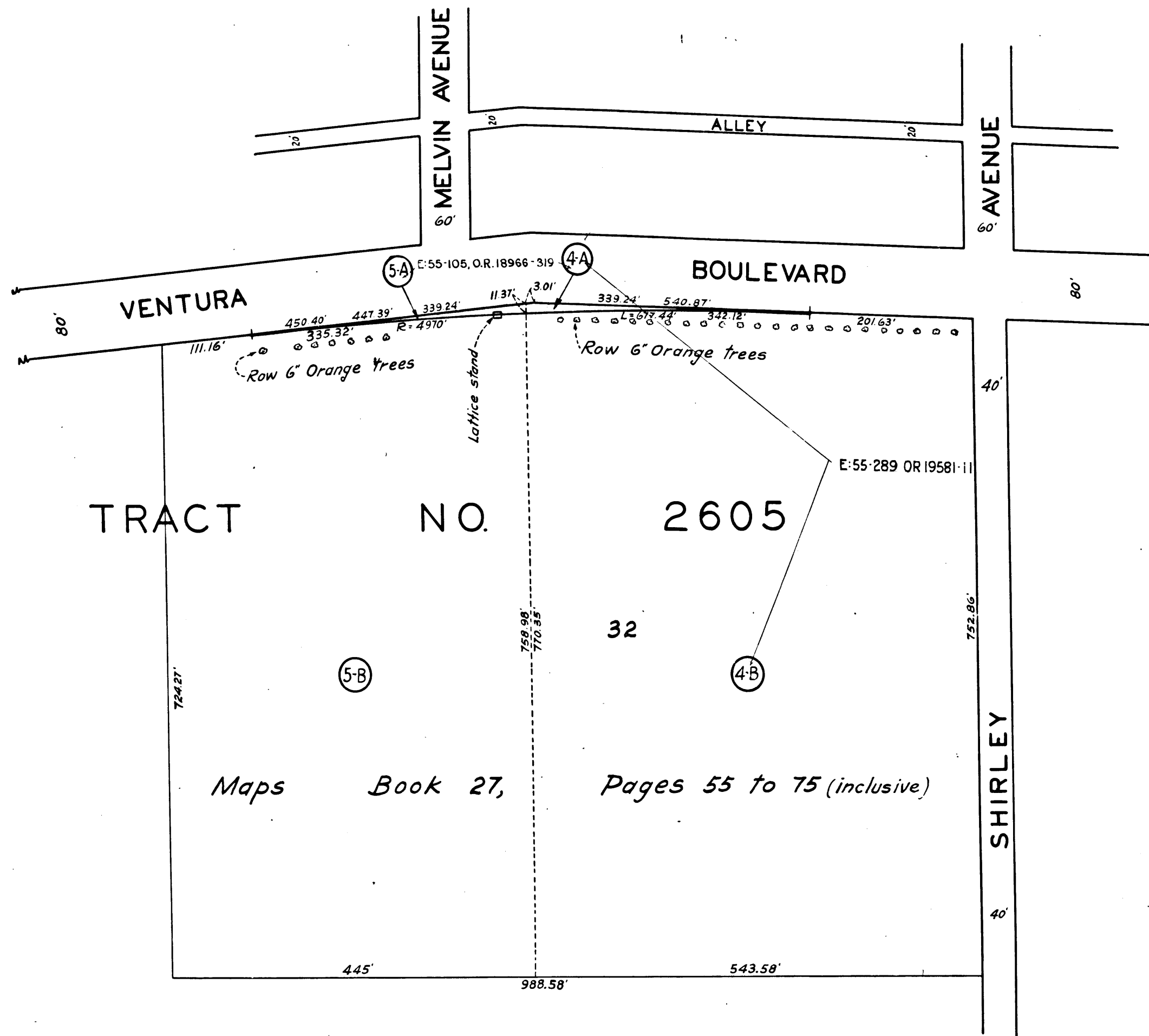
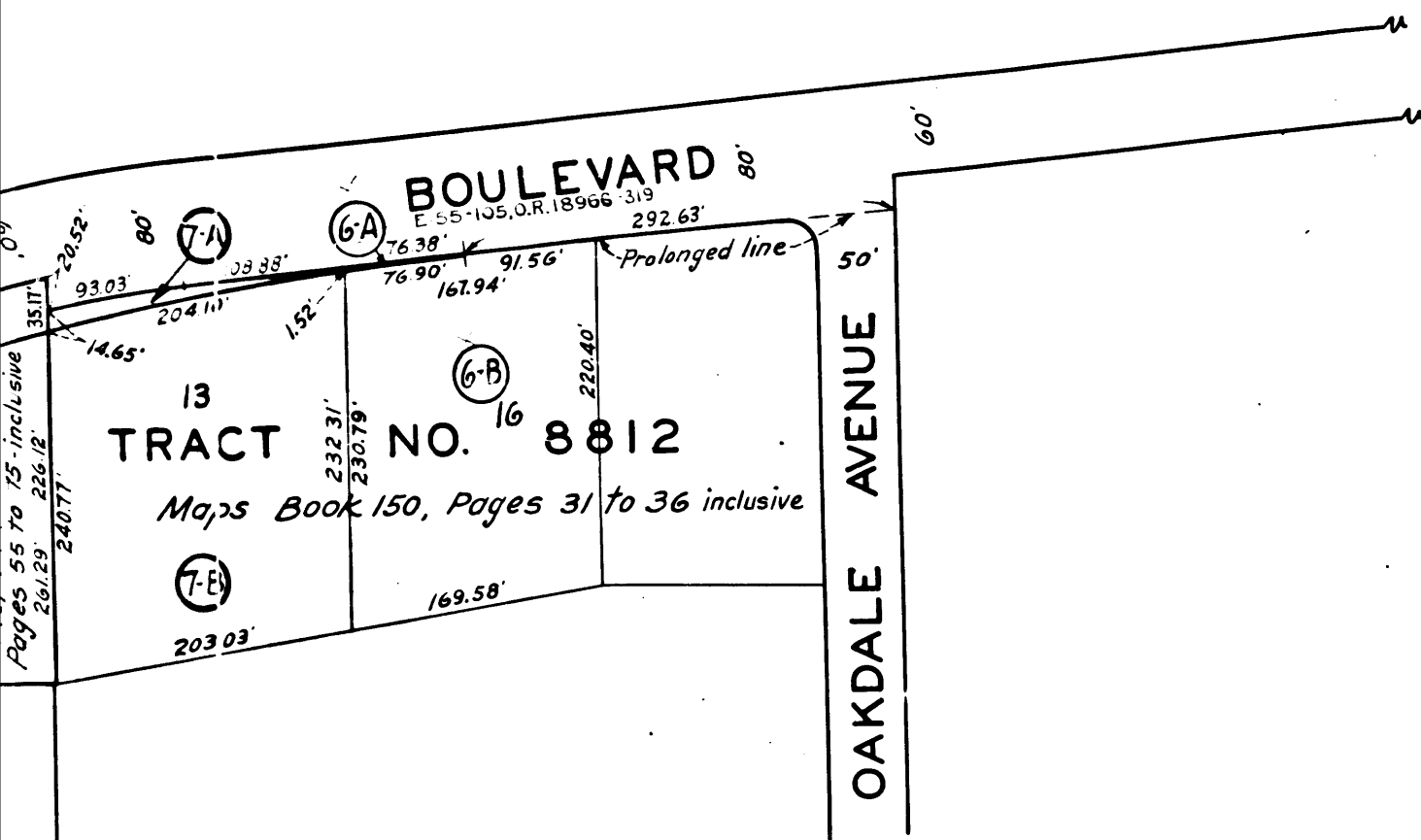
Final Judgment as to parcels 3-A, 3-B, & 3-D in favor of Pltff, rendered July 23, 1946. E-69-282, O.R. 23498-361

Final judgment in favor of Pltff as to parcels 1-A & 1-B Rendered 6-26-47
 E-78-108, O.R. 24785-311

C.F. 2112 1-12

A-6613

A-6613



TO WHICH IT
 WHICH WILL
 SHOWING EA
 FOR THE CONST

AL
 VEN
 IMP
 SHIRLEY

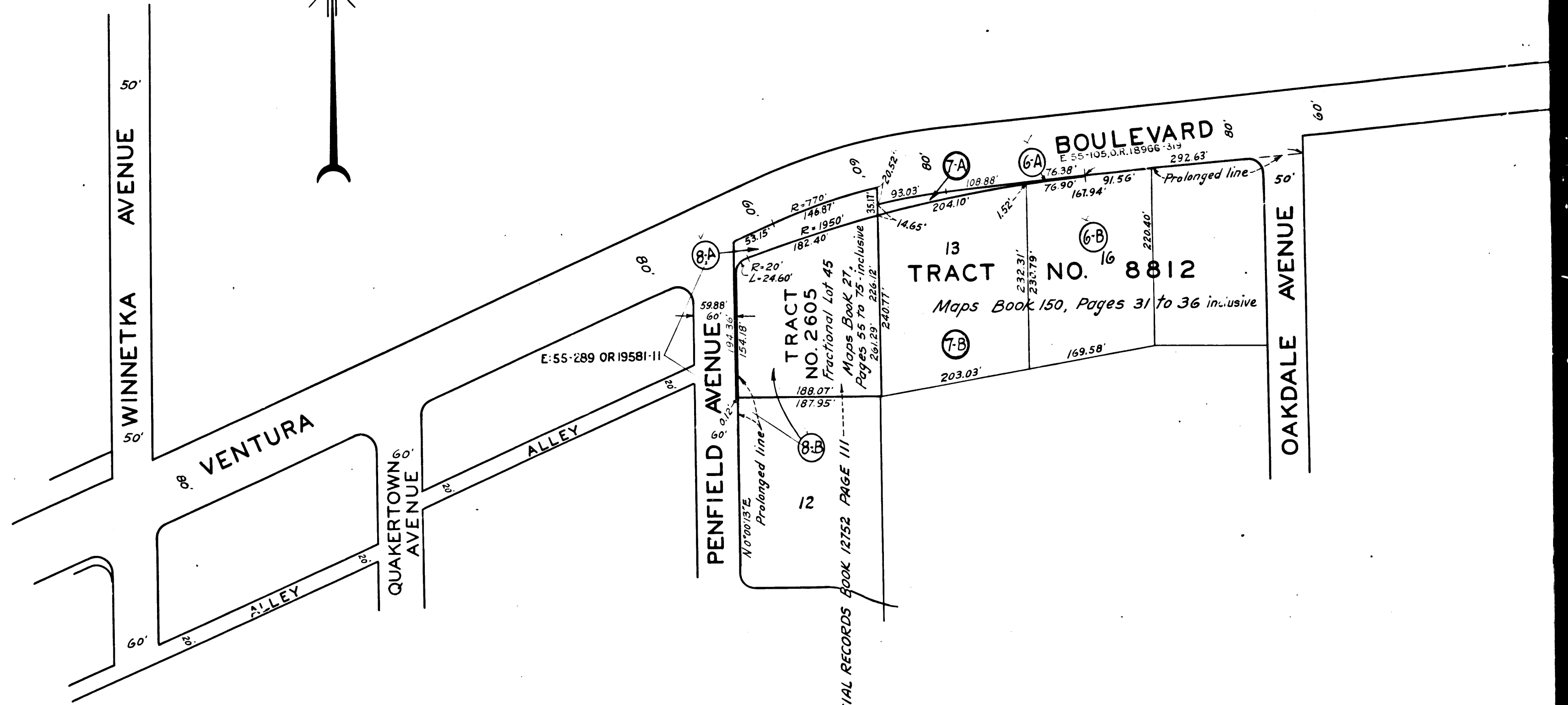
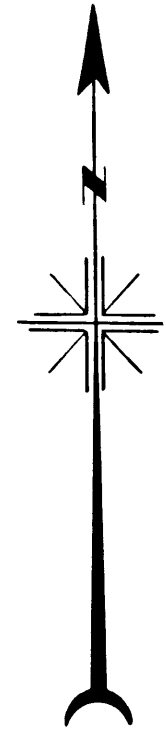
- Notes :-
1. Land to b
 2. Real pro
 3. Easement
 4. Easement
 5. Dotted lin
 6. Figures a

INDEX 57

12
 C.F. 2112 1-2

P. W. A. PROJECT NO. 1708-F UNIT NO. 6-7

FOR CONTINUATION
SEE SHEET 2



OFFICIAL RECORDS BOOK 12752 PAGE 111

3
C.F. 2112 1-2