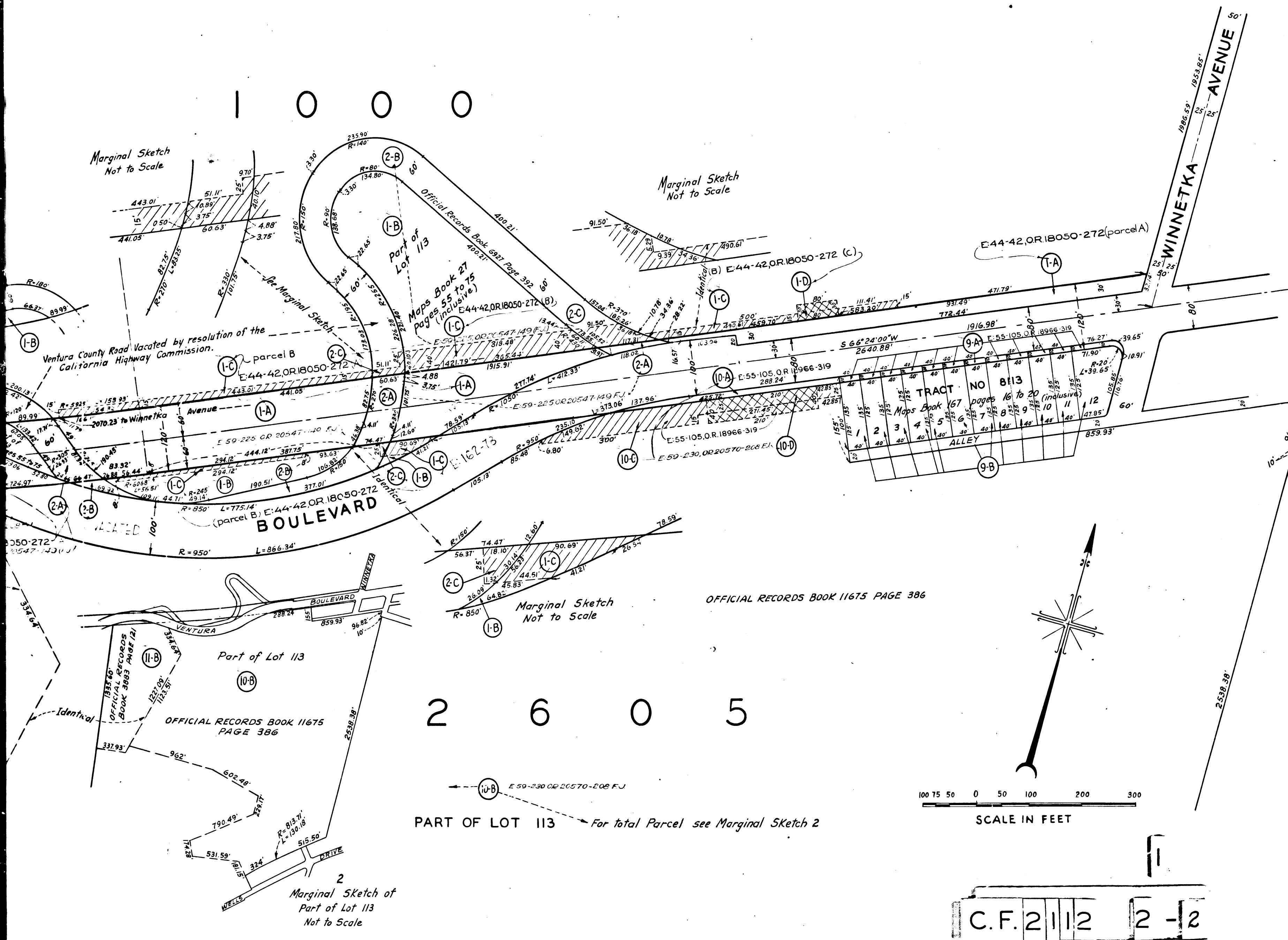


V-001-A



Marginal Sketch  
Not to Scale

Marginal Sketch  
Not to Scale

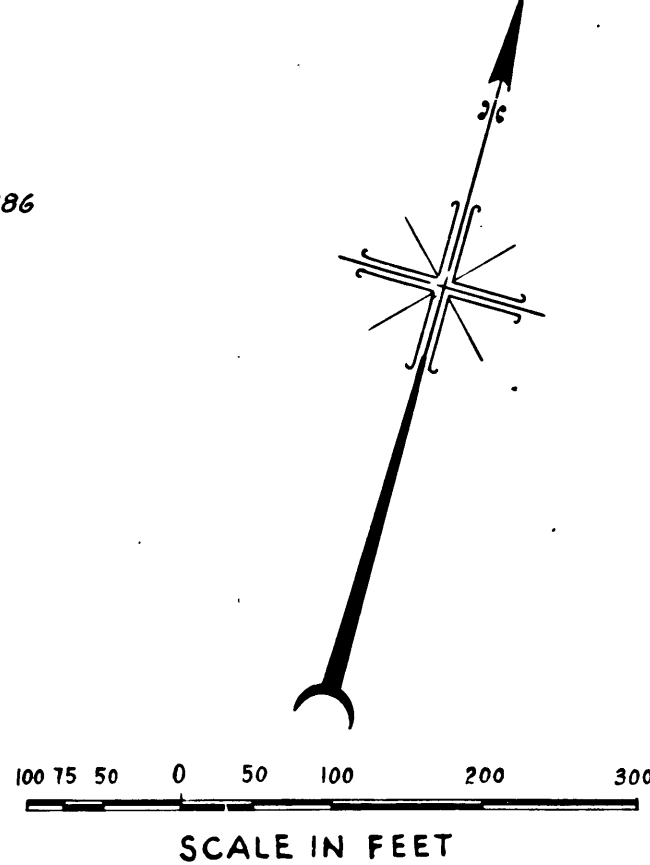
Marginal Sketch  
Not to Scale

Marginal Sketch of  
Part of Lot 113  
Not to Scale

OFFICIAL RECORDS BOOK 11675 PAGE 386

2 6 0 5

PART OF LOT 113 For total Parcel see Marginal Sketch 2



C.F. 2112 2-12

FOR CONTINUATION SEE SHEET 1

INDEX 57

Right of Way No.	20021	Improvement of
VENTURA BOULEVARD - TOPEKA DRIVE TO		
SERRANIA AVENUE	Order No.	89754
Clark's File	Dist. Map	7395-7407-7408 Div. Index
Sewers/Storm Drains	required	19
Calc.	Sully	Traced Kuhn
Submitted	19	Div. Dist. Engr.
Submitted	Jan 17	1940 Deputy Engr.
Approved	19	City Engineer

NEG. 431 SHT. 2  
A-6613

V-001-A

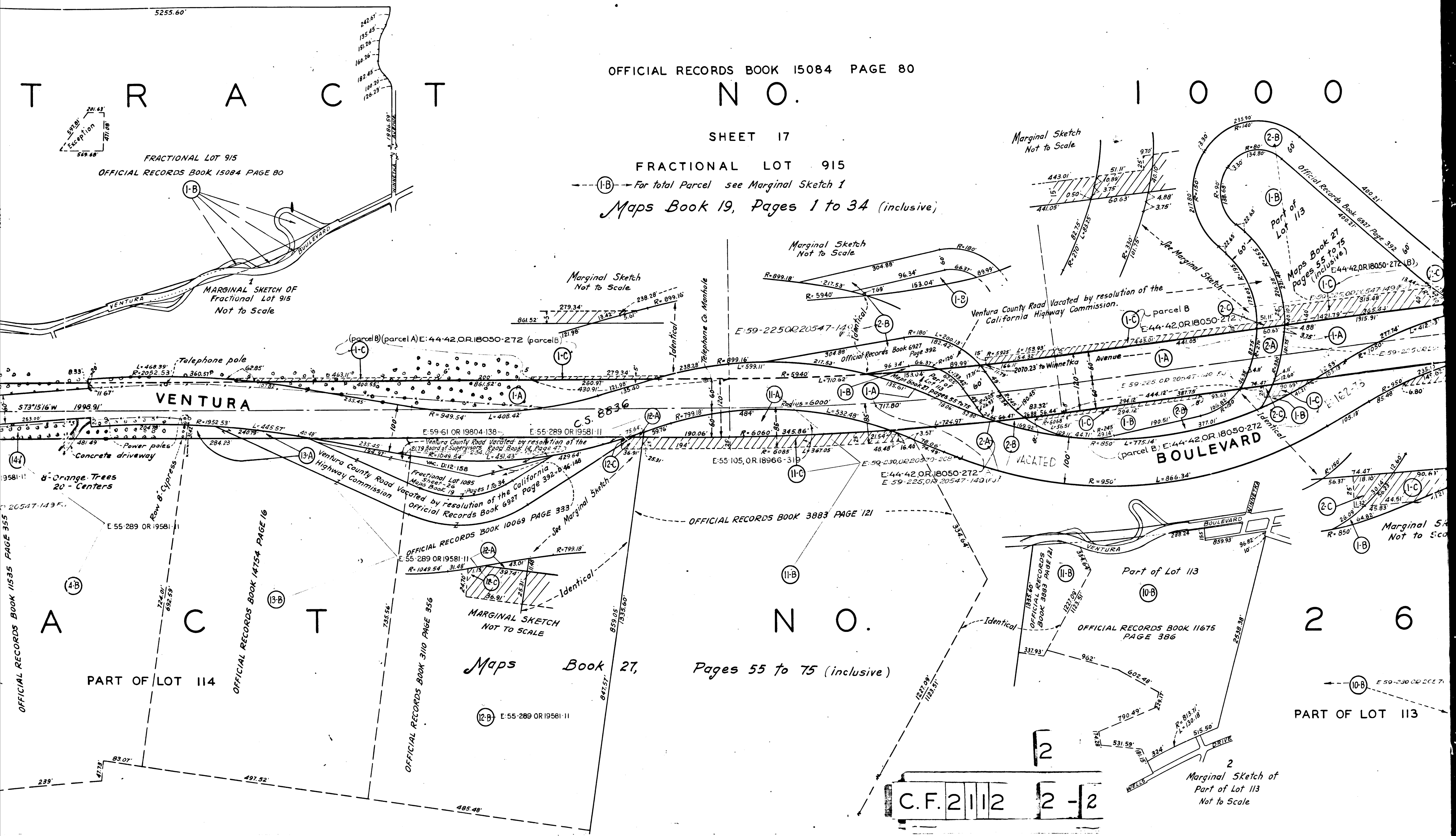
# T R A C T N O. 1 0 0 0

OFFICIAL RECORDS BOOK 15084 PAGE 80

SHEET 17

FRACTIONAL LOT 915

For total Parcel see Marginal Sketch 1  
Maps Book 19, Pages 1 to 34 (inclusive)



C.F. 2112 2-2

OFFICIAL RECORDS BOOK 1535 PAGE 335

OFFICIAL RECORDS BOOK 1454 PAGE 16

OFFICIAL RECORDS BOOK 3110 PAGE 356

OFFICIAL RECORDS BOOK 3883 PAGE 121

OFFICIAL RECORDS BOOK 3883 PAGE 121

OFFICIAL RECORDS BOOK 11675 PAGE 386

OFFICIAL RECORDS BOOK 40021 PAGE 392

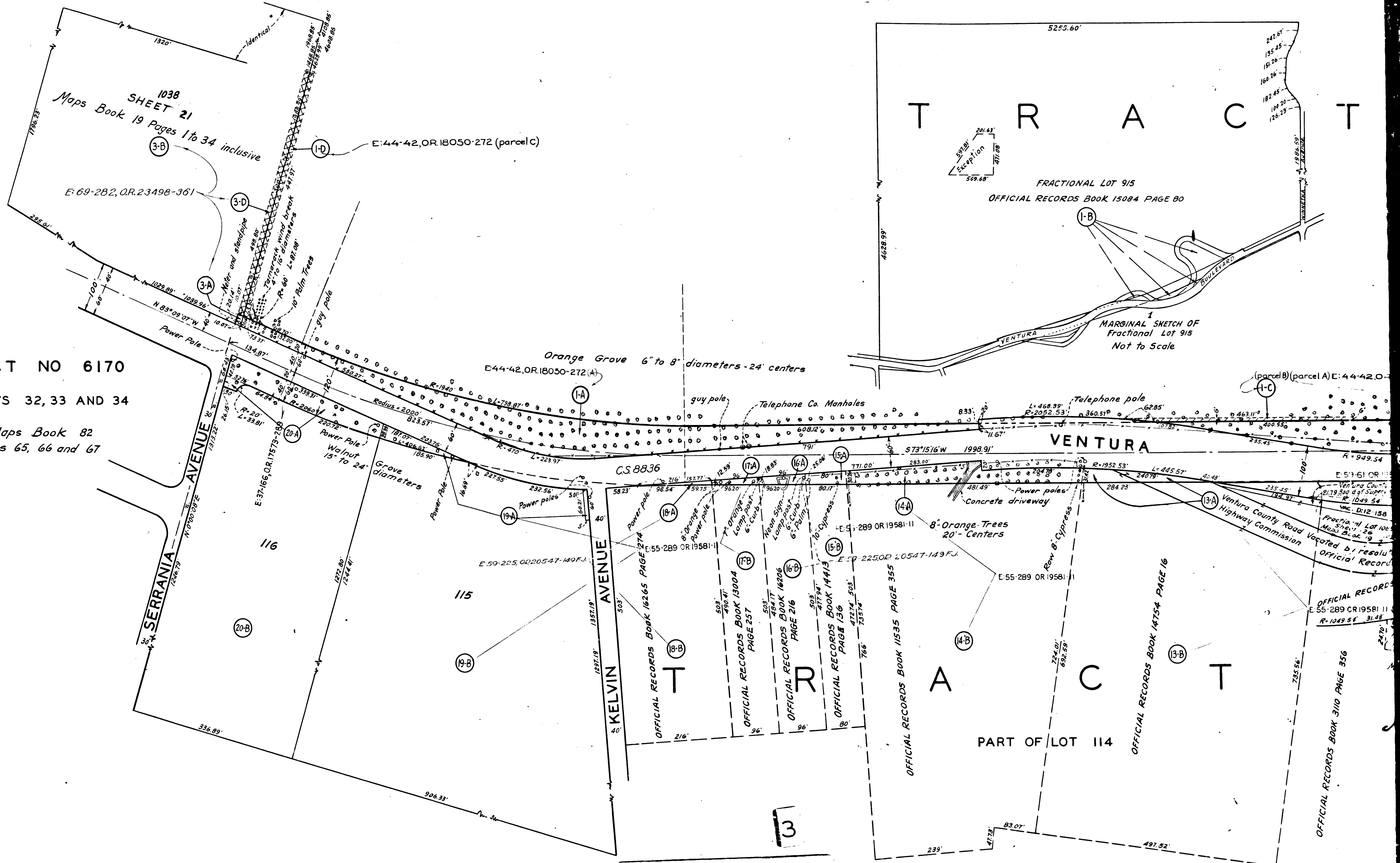
OFFICIAL RECORDS BOOK 40021 PAGE 392

OFFICIAL RECORDS BOOK 40021 PAGE 392

V-0013

0013-A

TRACT NO 6170  
SHEETS 32, 33 AND 34  
Maps Book 82  
Pages 65, 66 and 67



C.F. 2112 2-12