

V-0050

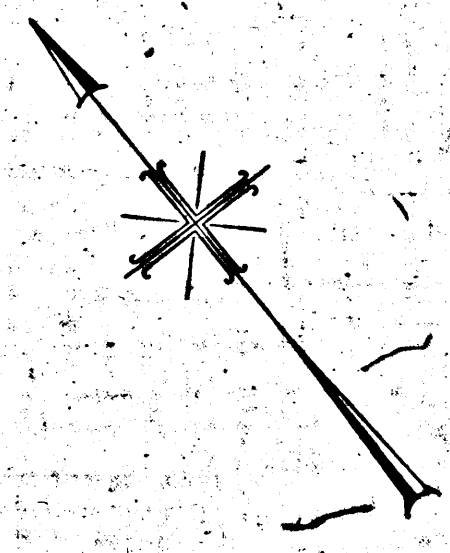
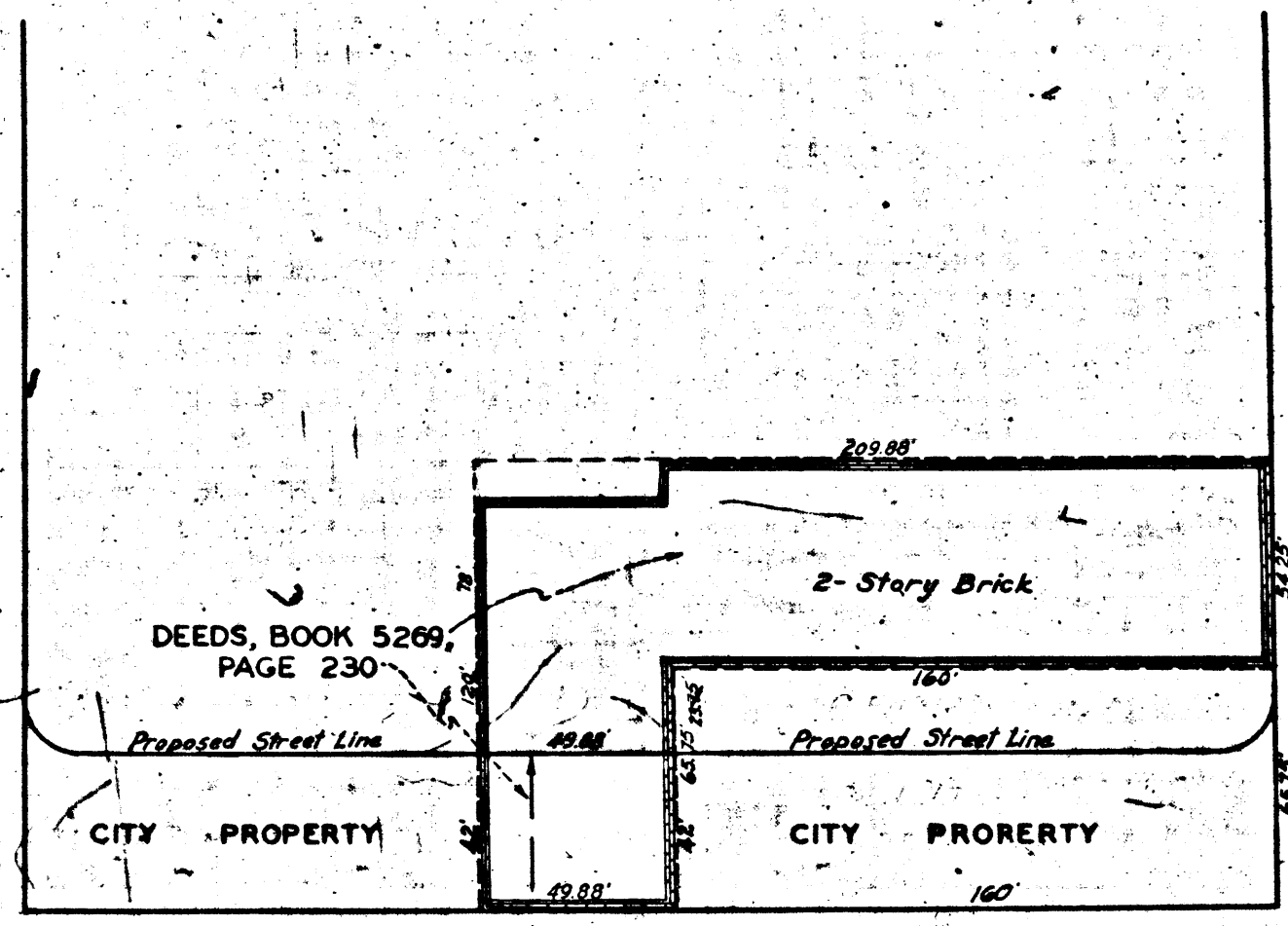
A-0050

STREET

HILL

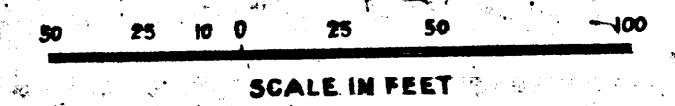
NORTH BROADWAY

BROADWAY



MAP
 SHOWING LAND TO BE CONDEMNED
 FOR THE
 WIDENING OF
FIRST STREET
 ALONG THE NORTHEASTERLY LINE THEREOF
 BETWEEN
 A POINT APPROXIMATELY 160 FEET NORTHWESTERLY OF
BROADWAY
 AND A POINT APPROXIMATELY 210 FEET NORTHWESTERLY OF
BROADWAY
 IN THE CITY OF LOS ANGELES, CALIFORNIA

IN ACCORDANCE WITH ORDINANCE NO. 82169
 LLOYD ALDRICH CITY ENGINEER JANUARY 1940



- NOTES:
1. Land to be condemned for public street purposes shown colored red.
 2. Dotted lines and dimensions show property holdings in those cases where they differ from recorded subdivisions.

Superior Court Case No. 449459
 Suit for Condemnation
 Filed Mar. 1, 1940
 City of Los Angeles, Plaintiff
 vs
 T. N. Canfield, et al., Defendants.
 Order authorizing Plaintiff to
 take immediate possession, ren-
 dered Mar. 8, 1940.
 Int. judg. as per map, rendered
 July 19, 1940. J. B. 1067-96.

Right of Way No.	Improvement of		
FIRST ST. - SPRING ST. TO HILL ST.			
Order No. 55590			
City's File	Dist. No. 5524	Div. Index	
Streets/Storm Drains	required	19	By
Checked	Hoed Kuhn	Drawn	Ckd. Rowe
Submitted	Feb 21 1940	Div. Dist. Eng. H. V. [Signature]	
Approved	[Signature]	[Signature]	

P. W. A. PROJECT NO. 1644 F UNIT NO. 34

A-0050

A-0050