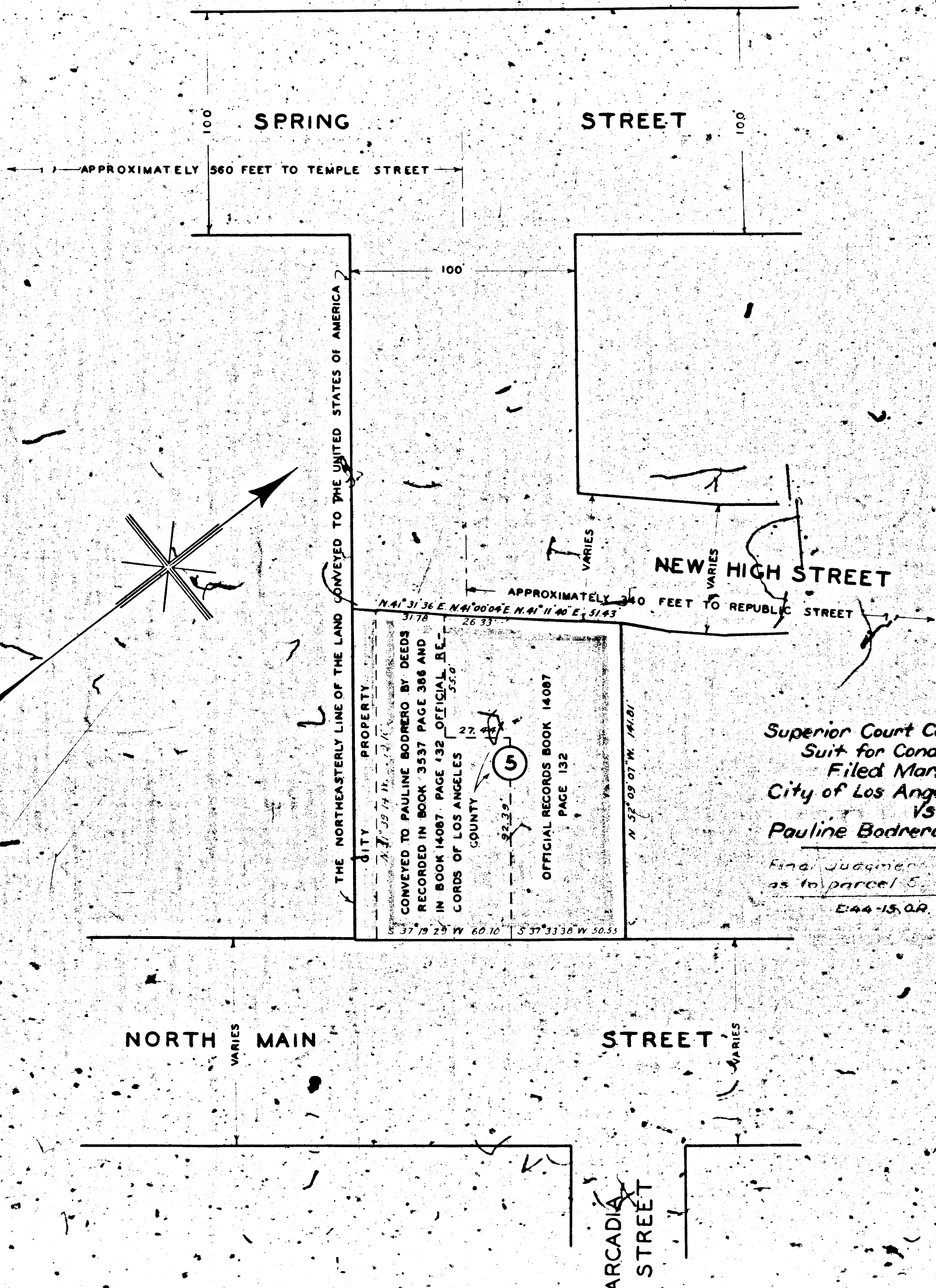


A-6625

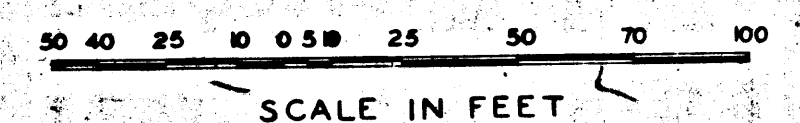
A-6625



MAP

SHOWING THE LAND TO BE CONDEMNED FOR THE OPENING OF A NEW STREET TO BE KNOWN AS **ALISO STREET** BETWEEN NORTH MAIN STREET AT ARCADIA STREET AND NEW HIGH STREET AT A POINT APPROXIMATELY 340 FEET SOUTHWESTERLY OF REPUBLIC STREET IN THE CITY OF LOS ANGELES, CALIFORNIA IN ACCORDANCE WITH ORDINANCE NO. 82318.

LLOYD ALDRICH - CITY ENGINEER FEBRUARY, 1940

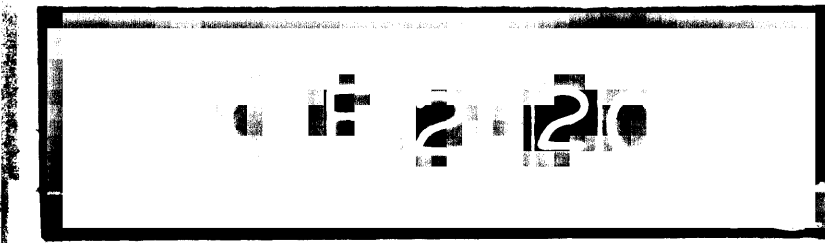


NOTES:

LAND TO BE CONDEMNED SHOWN COLORED RED. DOTTED LINES AND DIMENSIONS SHOW PROPERTY HOLDINGS IN THOSE CASES WHERE THEY DIFFER FROM RECORDED SUBDIVISIONS. FIGURE IN CIRCLE INDICATES PARCEL AS SET FORTH IN PARAGRAPH VIII OF THE COMPLAINT.

Superior Court Case No. 450268
 Suit for Condemnation
 Filed Mar. 26, 1940
 City of Los Angeles, Plaintiff
 vs
 Pauline Bodrero, et al, Def.
 Final Judgment rendered Jan. 18, 1941
 E:44-15,000 18143-143

Right of Way No.	Improvement of
ALISO STREET - NORTH MAIN STREET TO	NEW HIGH STREET
Clerk's File 2382-38 Dist Map 5524	Order No. 69287
Sewers/Storm Drains	required 19 By
Calc. ALLEN Traced	Drawn HOYT Ckd ROWE
Submitted March 4, 1940	Div. Dist. Engr. <i>Marill Bodrero</i>
Approved March 4, 1940	City Engineer <i>Lloyd Aldrich</i>



A-6625